

1-1-1998

The Clinical-Chemical Parameters, Serum Lipoproteins and Fatty Infiltration of the Liver in Ketotic Cows

Mutlu SEVİNÇ

Abdullah BAŞOĞLU

İsmail ÖZTOK

Mustafa SANDIKÇI

Fatih BİRDANE

Follow this and additional works at: <https://journals.tubitak.gov.tr/veterinary>



Part of the [Animal Sciences Commons](#), and the [Veterinary Medicine Commons](#)

Recommended Citation

SEVİNÇ, Mutlu; BAŞOĞLU, Abdullah; ÖZTOK, İsmail; SANDIKÇI, Mustafa; and BİRDANE, Fatih (1998) "The Clinical-Chemical Parameters, Serum Lipoproteins and Fatty Infiltration of the Liver in Ketotic Cows," *Turkish Journal of Veterinary & Animal Sciences*: Vol. 22: No. 5, Article 10. Available at: <https://journals.tubitak.gov.tr/veterinary/vol22/iss5/10>

This Article is brought to you for free and open access by TÜBİTAK Academic Journals. It has been accepted for inclusion in Turkish Journal of Veterinary & Animal Sciences by an authorized editor of TÜBİTAK Academic Journals. For more information, please contact academic.publications@tubitak.gov.tr.

The Clinical-Chemical Parameters, Serum Lipoproteins and Fatty Infiltration of the Liver in Ketotic Cows

Mutlu SEVİNÇ, Abdullah BAŞOĞLU

Selçuk University, Veterinary Faculty, Department of Internal Medicine, Konya-TURKEY

Ismail ÖZTOK

Selçuk University Faculty of Medicine, Department of Biochemistry, Konya-TURKEY

Mustafa SANDIKÇI

Selçuk University Veterinary Faculty, Department of Histology, Konya-TURKEY

Fatih BIRDANE

Selçuk University, Veterinary Faculty, Department of Internal Medicine, Konya-TURKEY

Received: 09.06.1997

Abstract: The objective of this study was to provide a unique insight into the relationship between ketosis and fat cow syndrome using clinical-chemical parameters, serum lipoproteins and histopathological changes of the liver. The cholesterol and protein concentrations were significantly lower in the ketotic cows ($p<0.05$) than in the controls. The glucose and HDL-cholesterol levels were significantly lower in the ketotic cows ($p<0.01$) than controls. The total bilirubin, CPK levels ($p<0.05$), and direct bilirubin, albumin levels ($p<0.01$) were significantly higher in the than controls. The percentage of fatty infiltration of the liver parenchyma varied from 27 to 42 percent in seven ketotic cows and was 13 per cent in one ketotic cow. In light of this a relationship was established between postpartum clinical ketosis and fat cow syndrome.

Key Words: Lipoprotein, Fat cow syndrome, Ketotic cows.

Ketozisli Sığırlarda Klinik-Kimyasal Parametreler, Serum Lipoproteinleri ve Karaciğer Yağ İnfiltrasyonu

Özet: Sunulan çalışmanın amacı, ketozisli sığırlarda klinik-kimyasal parametreler, serum lipoproteinleri ve karaciğer yağ infiltrasyonunun belirlenmesi ile, hastalığın yağlı karaciğer sendromu ile ilişkisine ışık tutmaktır. Ketozisli sığırlarda kolesterol ve protein konsantrasyonları kontrol grubu hayvanlara göre ($p<0.05$) düzeyinde, glikoz ve HDL-kolesterol konsantrasyonları da ($p<0.05$) düzeyinde, direkt bilirubin ve albumin konsantrasyonları da ($p<0.01$) düzeyinde yüksek bulundu. Karaciğerin histopatolojik muayenesinde 7 sığırdan %27-42 arasında şiddetli, bir sığırdan ise %13 düzeyinde orta şiddetli karaciğer yağlanması rastlandı. Buna göre, doğum sonrası şekillenen klinik ketozis karaciğer yağlanması ile önemli ölçüde ilişkilidir.

Anahtar Sözcükler: Lipoprotein, karaciğer yağlanması, ketozisli sığır

Introduction

Many-high-yielding dairy cows have a negative energy balance during the first few weeks of lactation. The demand of the mammary gland for glucose often is greater than the glucose available. This imbalance increases fat mobilization, and increases hepatic ketogenesis. An increase in keton-body concentration during early lactation indicates general fat mobilization. Hyperketonemia and fatty infiltration of the liver become particularly pronounced during ketosis (1-4).

Bovine ketosis is a common and economically significant disease, and may be primary or secondary subclinical. Primary ketosis generally occurs in housed cattle and is seen ten days to six weeks after parturition, with maximum incidence at three weeks (4, 5).

Fatty liver syndrome is a common problem due to a generalised mobilization of fat. Fatty infiltration of the liver occurs as the result of energy requirement during

early lactation, particularly of high-yielding cows, outstripping the energy supplied by the feed, so that body reserves have to be mobilized. There is a rapid loss of body weight and intracellular fat accumulates in organs such as the liver. This produces a syndrome in which the affected cattle are more susceptible to metabolic, infectious and reproductive problems (2, 4). Fat mobilization is closely associated with high incidence of severe ketosis during early lactation (6). A fatty liver has been a common finding in severe cases of bovine ketosis (5).

The diagnosis of fat cow syndrome and ketosis is most often based on history, physical findings, and failure to respond promptly to what seems to be appropriate therapy. Laboratory methods are available which can aid the practitioner in accurately assessing the degree of liver lipidosis and lost function. These include non-specific enzymatic tests, specific enzymatic tests, quantitative assays of hepatic lipid content, and function tests of the

liver itself (7). The function tests of the liver are too cumbersome to be carried out under field conditions and liver biopsies are seldom permitted by herd owners. If the possible influence of bovine ketosis on the liver is investigated under field conditions it is practical to measure the plasma activities of the liver-specific enzymes and the plasma concentration of the total bilirubin and urea (8). The determination of serum lipoprotein in dairy cows during early lactation would seem to be of interest both for understanding the pathogenesis of fatty liver syndrome and diagnostic purposes (9).

The objective of this study was to provide a unique insight into the relationship between ketosis and fat cow syndrome using clinic-chemical parameters, serum lipoproteins and histopathological changes of the liver.

Materials and Methods

Animals:

Sixteen Holstein cows, eight in the ketotic group and eight in the healthy group, were used. All the cows were multiparous and in early lactation. A cow was defined as ketotic if she had the clinical signs, and positive results from Rothera and deepstick tests (Combur 9®).

Blood sampling and serum analysis:

Blood samples were taken from the jugular vein just before the liver biopsies were obtained (10). Serum was analysed for glucose, triglyceride, cholesterol, urea, total bilirubin, direct bilirubin, total protein, albumin, alkaline phosphatase, Aspartate amino transferase (AST), Alanine aminotransferase (ALT), Creatine phosphokinase (CPK), and Gamma glutamyltransferase (GGT) with a Technicon RA-XT autoanalyser. HDL and LDL-cholesterol (high and low density lipoprotein) levels were determined with commercial test kits (Boehringer Mannheim GmbH

Diagnostica).

Liver Biopsy:

Liver samples were put in Baker's formol-Ca solution and fixed for 16 hours (11). Thin sections (12 μ) were cut from each sample and stained with oil Red O and Sudan Black B (12). Fields from each of five randomly selected blocks were examined under light microscopy and changes recorded (13). Cows with less than 10 percent fat in the liver were classified as mildly fatty on the basis of histological analysis of liver biopsy samples. Those with 10 to 20 per cent fat were considered moderately fatty, while those with over 20 per cent fat were considered severely fatty (14).

Student's test was used to analyse the data (15).

Results

Clinical findings:

The cows with primary ketosis had a history a gradual decrease in appetite and milk production, and rapid deterioration of body condition. They had firm, dry faeces. All the cows exhibited ketonuria.

Clinical chemistry:

The cholesterol and protein concentrations were significantly lower in the ketotic cows ($p < 0.05$) than controls. The glucose and HDL-cholesterol levels were significantly lower in ketotic cows than controls. The chemical parameters are given in Table 1.

Histopathology:

The percentage of fatty infiltration of the liver parenchyma varied from 27 to 42 percent in seven ketotic cows and was 13 percent in one ketotic cow (Figures 1-3).

Parameters	Ketotic group	Healthy group	T-test
Glucose (mg/dl)	31	47	9.407**
Triglyceride (mg/dl)	13.3	13.5	0.121
Cholesterol (mg/dl)	126.7	162.1	2.359**
HDL (mg/dl)	54.3	102.4	6.015**
LDL (mg/dl)	74.2	55.8	1.679
VLDL (mg/dl)	1.2	1.9	0.122
Protein (g/dl)	7.2	8.4	3.292*
Albumin (g/dl)	3.3	2.1	7.907**
Urea (mg/dl)	46.6	28.5	1.539
Total bilirubin (mg/dl)	0.74	0.14	3.984*
Direct bilirubin (mg/dl)	0.24	0.05	4.029**
AST (U/L)	121	132.4	0.392
ALT (U/L)	47.6	66.8	2.252
CPK (U/L)	661.8	329.6	2.704*
GGT (U/L)	18.9	19	0.081

Table 1. Clinical-chemical parameters and serum lipoproteins in all groups of cows.

* $p < 0.05$

** $p < 0.01$

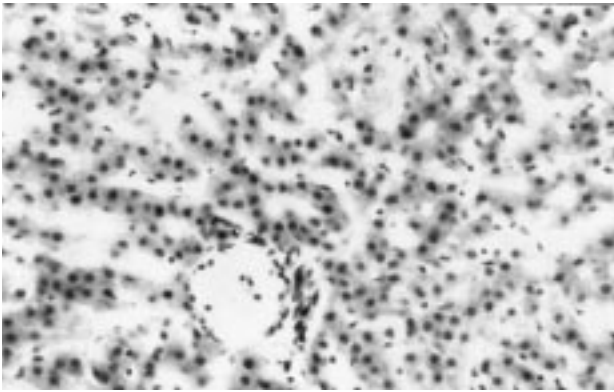


Figure 1. Microscopic appearance of the liver taken as a biopsy material from a healthy cow. Oil Red O, x190.

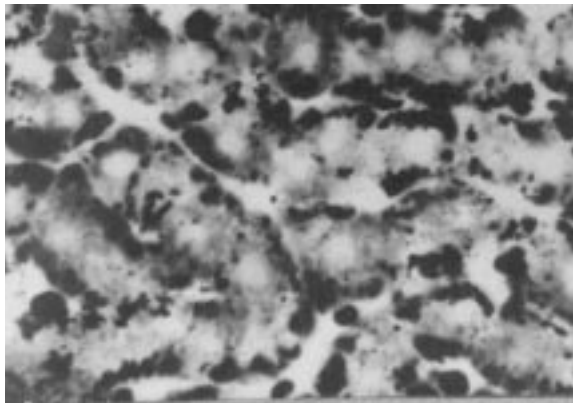


Figure 2. Microscopic appearance of the liver of a cow with moderate fatty liver syndrome. Sudan Black, x460.

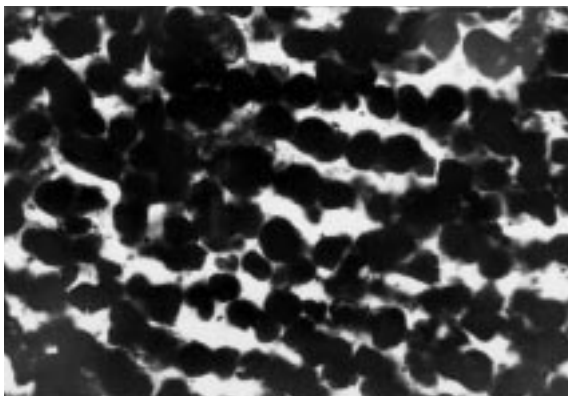


Figure 3. Microscopic appearance of the liver of a cow with severe fatty liver syndrome. Sudan Black, x280.

Discussion

There are 3 elements to be considered in the diagnosis of fat cow syndrome with subclinical fatty liver: history, clinical pathology and liver biopsy result. In cases of suspected subclinical fatty liver, diagnosis may only be possible by carrying out liver biopsy sample examination (4).

Classical clinical signs of spontaneous ketosis are loss of appetite, decrease in milk production, and rapid deterioration of body condition. All cows with fat cow syndrome show the typical signs of anorexia, depression, weakness, a marked decrease in milk production, ketonuria and progressive debilitation (5, 16-18). The clinical signs in the present study were also consistent with these. There is no significant alteration in the serum glucose of ketotic cows (18, 19). However, hyperketonemia and hypoglycemia are more obvious biochemical parameters (6, 16). The plasma glucose concentration is a more reliable guide to the extent of hepatic damage than total keton bodies (16). Blood glucose is below 40 mg/dl accompanied by ketonemia and ketonuria in many cows due to ketosis (18). In the present study, serum glucose concentration was significantly lower in the ketotic cows compared with controls. Cholesterol and phospholipids are the principal components of lipoproteins and accompanied by much smaller quantities of triglycerides. When there are disturbances in the lipoprotein synthesis, triglycerids accumulate in the liver cells with fatty liver as a result. A high proportion of the plasma lipids is transported in HDL. In cows with ketosis, the amount of cholesterol and phospholipids differed very little from normal cows, and the cows with fatty liver had lower amounts of cholesterol and phospholipids (20-22). In the present study, the cholesterol levels in ketotic cows were lower than controls. According to Rayssiguer et al. (9), the animals with moderate steatosis have significantly lower values of HDL than the control animals as shown by the decrease in HDL-cholesterol and HDL-phospholipid concentrations, whereas the LDL fraction is not modified. Severe steatosis was associated with a large decrease in LDL concentration and a smaller change in HDL concentration. Therefore the determination of LDL cholesterol and LDL phospholipids might be a useful diagnostic aim. In the present study, the ketotic cows had lower amounts of HDL. These cows also had severe fatty liver. This difference between HDL and LDL levels in cows with severe fatty liver may originate in the assessment of the percentage volume of visible fat in the hepatic parenchymal cells.

Hyperbilirubinemia is not necessarily indicative of liver dysfunction, and total and direct bilirubin levels should always be interpreted in association with other tests for liver damage (23). In contrast, bilirubin and bile acids are the most useful indicators of the alteration in hepatic uptake (8, 24, 25). Total bilirubin concentration increases in primary ketosis in cows (2). In the present study, there were also significant increases in total bilirubin ($p < 0.05$) and direct bilirubin ($p < 0.01$) concentrations in ketotic cows.

The plasma albumin concentrations fall significantly with the increase in severity of hepatic changes (16). In contrast, the albumin levels in the present study were significantly higher than in the control cows. The protein

concentrations in ketotic cows were significantly lower compared with the control cows.

The elevation in CPK of ketotic cows in the present study may indicate damage to other tissues such as kidney and muscle as well as to the liver.

It has been reported that ketosis was associated with fatty liver (9, 10, 19). In the present study, seven cows had severe and one had moderate steatosis.

It was concluded that varying degrees of fat infiltration of the liver and some clinical-chemical parameters in all cattle with ketosis show that the disease is associated with fat cow syndrome. As a result, ketosis and fat cow syndrome should be considered together in diagnosis and treatment.

References

1. Holtenius, P. Hormonal regulation related to the development of fatty liver and ketosis. *Acta Vet. Scand.*, 1993; 89, 55-60.
2. Andrews, A.H., Laven, R. and Maisey, I. Treatment and control of an outbreak of fat cow syndrome in a large dairy herd. *Vet. Rec.*, 1991; Sep 7, 216-219.
3. Reid, I.M., Roberts, C.J., Teacher, R.J. and Williams, L.A. Effect of body condition at calving on tissue mobilisation, development of fatty liver and blood chemistry of dairy cows. *Anim. Prod.*, 1986; 43, 7-15.
4. Gröhn, Y. and Lindberg, L.A. Ultrastructural changes of the liver in spontaneously ketotic cows. *J. Comp. Path.*, 1985; 95, 443-452.
5. Gröhn, Y., Lindberg, L.A., Bruss, M.L. and Farver, T.B. Fatty infiltration of liver in spontaneously ketotic dairy cows. *J. Dairy Sci.*, 1983; 66, 2320-2328.
6. Higgins, R.D. and Anderson, W.S. Fat cow syndrome in a British dairy herd. *Vet. Rec.*, 1983; November 12, 461-463.
7. Rings, D.M. Hepatic lipidosis; mechanisms, diagnostics, and treatments. *The Bovine Proceedings*, 1990; 22, 19-23.
8. Kauppinen K. ALAT, AP, ASAT, GGT, OCT activities and urea and total bilirubin concentrations in plasma of normal and ketotic dairy cows. *Zbl. Vet. Med. A*. 1984; 31, 567-576.
9. Rayssiguier, Y., Mazus, A., Gueux, E., Reid, I.M. and Roberts, C.J. Plasma lipoproteins and fatty liver in dairy cows. *Research in Veterinary Science*, 1988; 45, 389-393.
10. Smart, M.E. and Northcote, M.J. Liver biopsies in cattle. *The Compendium*, 1985; 7, 5, 27-32.
11. Baker, J.R. The histochemical recognition of lipid quart. *J. Micr. Sci.*, 1946; 87-441.
12. Culling, C.F.A., Allison, R.T. and Barr, W.T. *Cellular pathology technique* Butterworths, 1985; London.
13. Romeis, B. *Microskopische technik*. Urban und Schwarsenberg. 1989; München-Wien-Baltimore.
14. Aşti, R.N., Aslan, V., Nizamoğlu, M., Demici, U., Tiftik, A.M. and Gökçay, Y. Süt ineklerinde yağlı karaciğer sendromu üzerinde araştırmalar. *Selçuk Üniv. Vet. Fak. Dergisi*, 1988; 4, 1, 21-36.
15. Steel, R.G.B. and Tarrie, J.H. *Principles and Procedures of statistics*. 2nd Ed. 1981; McGraw-Hill Int. Book Comp., Tokyo.
16. West, H. Effect on liver function of acetonemia and the fat cow syndrome cattle. *Research in Veterinary Science*, 1990; 48, 221-227.
17. Reid, I.M. Diagnosis of fatty liver in dairy cows. *Isr. J. Vet. Med.*, 1986; 42, 4, 399-404.
18. Morrow, D.A. Fat cow syndrome *Journal of Dairy Science*, 1975; 59, 9, 1625-1629.
19. Aslan, V., Aşti, R., Nizamlioğlu, M., Tekeli, T., Başoğlu, A. and Demirci, U. Postpartum dönem hastalıklarının yağlı karaciğer sendromu ile ilgisi. *Selçuk Üniv. Vet. Fak. Dergisi*, 1989; 4, 1, 43-51.
20. Roberts, C.J. and Reid, I.M. Fat cow syndrome and subclinical fatty liver. *Current Veterinary Therapy Animal Practice*, 1986; W.B. Saunders Comp. Philadelphia.
21. Holtenius, P. Plasma lipids in normal cows around partus and in cows with metabolic disorders with and without fatty liver. *Acta Vet. Scand.*, 1989; 89, 441-445.
22. Başoğlu, A., Sevinç, M., Ok, M. and Gökçen, M. Peri and postparturient concentrations of lipid lipoprotein, insulin and glucose in normal dairy cows. *Tr. J. of Veterinary and Animal Sciences*, 1997; (in press).

23. Dunn, J. Assasment of liver damage and dysfunction. In practive, 1992; July, 193-200.
24. West, H.J. Suspected liver dysfunction-decision flow chart. Cattle Practice, 1994; 2, 1, 17-2
25. West, H.J. Liver function in dairy cows in late pregnancy and early lactation. The Bovine Practitioner, 1990; 25, 127-130.