

## Diversity of Mollusca along the coasts of Türkiye

BİLAL ÖZTÜRK

BANU BİTLİS

NESLİHAN TÜRKÇÜ

Follow this and additional works at: <https://journals.tubitak.gov.tr/zoology>



Part of the [Zoology Commons](#)



This work is licensed under a [Creative Commons Attribution 4.0 International License](#).

## Diversity of Mollusca along the coasts of Türkiye

Bilal ÖZTÜRK<sup>1,\*</sup>, Banu BİTLİS<sup>2</sup>, Neslihan TÜRKÇÜ<sup>3</sup>

<sup>1</sup>Department of Hydrobiology, Faculty of Fisheries, Ege University (retired academic), İzmir, Türkiye

<sup>2</sup>Institute of Marine Sciences and Technology, Dokuz Eylül University, İzmir, Türkiye

<sup>3</sup>Department of Hydrobiology, Faculty of Fisheries, Ege University, İzmir, Türkiye

Received: 30.06.2024 • Accepted/Published Online: 20.08.2024 • Final Version: 02.10.2024

**Abstract:** The present study was based on a species list published in 2014 and a compilation of data from papers on marine molluscs along the coasts of Türkiye published from that date until the end of April 2024, along with six new records presented herein. Mollusca were represented by 1133 species classified into 7 classes, 255 families, and 617 genera on the Turkish coasts. The Pyramidellidae (92 species) and Rissoidae (64 species) were species-rich mollusc families. Most of the listed molluscs were benthic, except for 26 pelagic species and 119 parasitic taxa. The Aegean Sea had the highest number of species (875 species), followed by the Levantine Sea (859 species), the Sea of Marmara (635 species), and the Black Sea (163 species). In total, 133 species were alien molluscs that entered the Mediterranean Sea via different pathways. The molluscs distributed along the Turkish coasts were mostly encountered in soft substrates at shallow depths (0–10 m) (752 species), and only 109 species were reported at depths over 600 m.

**Key words:** Mollusca, species diversity, Turkish coasts, alien species, protected species

### 1. Introduction

Mollusca are one of the major animal phyla present in marine environments with the described taxa varying between 44,389 and 52,389 species, which consists of 28%–36% of the total estimated number of mollusc species (Appeltans et al., 2012). The variability in the number of species is due to uncertainty about the number of gastropod species (32,000–42,000 species). The Mediterranean Sea mollusc fauna is commonly considered the best-known marine mollusc fauna in the world, with 2485 known species (Renda et al., 2022) classified into eight classes.

The beginning of studies on molluscs dates back to the end of the 18<sup>th</sup> century on the Turkish coasts, and the first available information was found in the work by Forsskål (1775), in which mollusc species were reported from İzmir Bay and the Sea of Marmara. In a period of approximately 250 years following this study, many other studies were carried out on this topic by both local and foreign scientists. All available data in these studies, which were conducted until the beginning of 2014, were compiled and published by Öztürk et al. (2014). In their compilation, 1065 mollusc species were listed belonging to seven classes: Bivalvia, Caudofoveata,

Cephalopoda, Gastropoda, Polyplacophora, Scaphopoda, and Solenogastres. Thus far, no record of the class Monoplacophora has been reported from the coasts of Türkiye.

Scientific studies have continued over the last decade, resulting in changes to the nomenclature of some known taxa and the descriptions of new species. According to Molluscabase<sup>1</sup>, over 100 nomenclatural changes have been detected in the species list of molluscs from the Turkish coasts since the last checklist published in 2014. Furthermore, a total of 68 additional mollusc species have been documented in subsequent studies (i.e., Çevik et al., 2015; Bitlis and Öztürk, 2016, 2017; Giannuzzi-Savelli et al., 2018; Ovalis and Mifsud, 2019; Boyer et al., 2020; Öztürk and Geyran, 2020; Öztürk, 2021; Öztürk et al., 2014, 2015, 2017, 2023 a, b; Nofroni et al., 2022; Öztürk and Ovalis, 2024) since that date, of which five species were of nonnative origin.

In the present study, 67 papers dealing with marine molluscs in Türkiye were examined with the objective of determining the actual status of species diversity of the phylum Mollusca along the Turkish coasts, their ecological and distributional (depth and habitat) characteristics, and the species protected under various conventions.

<sup>1</sup>Molluscabase. <https://www.molluscabase.org/aphia.php?p=search>. Accessed online May 2024.

\* Correspondence: ozturkbilal1955@gmail.com

**2. Materials and methods**

The present list of marine mollusc species distributed along the Turkish coasts is based on all available literatures included in the latest inventory list published in 2014 (Öztürk et al., 2014) and the examination of 67 additional studies carried out during the following 10 years until the end of April 2024. References concerning the taxa included in the latest species list by Öztürk et al. (2014) were denoted with the plus symbol (+) in this study. The species recorded after 2014, and those with an earlier publication date than that given in the previous species list (e.g., Nikitin, 1948), are presented in Table 1 in Arabic numerals. Species that are new records for the Turkish mollusc fauna or for any of the seas surrounding Türkiye were denoted as PS. The localities of the newly recorded species are indicated on the map in Figure 1, and superscripted over PS.

All taxa included in this compilation were checked for nomenclature changes according to Molluscabase. The higher taxa, as well as families, genera, and species names are given in alphabetical order in Table 1. On the other hand, if there was a change in the nomenclature of any species listed in the latest checklist, it was noted for each species in Table 1 in the Notes section. In addition, species with suspicious records or incorrect information were excluded from the inventory list. The validity of nonindigenous taxa was checked based on Zenetos et al. (2022) and Galanidi et al. (2023), and some species were excluded from the species list.

The species reported from the Bosphorus (İstanbul Strait) and the Dardanelles (Çanakkale Strait) in the latest checklist (Öztürk et al., 2014) were incorporated into the inventory list of the Sea of Marmara, due to the

**Table 1.** Inventory list of Marine Molluscs of Türkiye [BS: Black Sea; SM: Sea of Marmara; AS: Aegean Sea; LS: Levantine Sea; DR: depth range (I: 0–10 m; II: 11–50 m; III: 51–100 m; IV: 101–200 m; V: 201–400 m; VI: 401–600 m; VII: >600 m); H: habitat (Hs: hard substratum – including algae, sponge, mussels etc.; Ss: soft substratum – including all phanerogams; P: pelagic; D: demersal; Pz: parasite); PS: present study; \*: alien species; BC: species protected by the Barcelona Convention].

Taxa	BS	SM	AS	LS	DR	H	Notes
<b>Class: BIVALVIA</b>							
<b>Subclass: Autobranchia</b>							
<b>Anomiidae</b>							
<i>Anomia ephippium</i> Linnaeus, 1758	+	+	+	+	I-III	Ss	
<i>Heteranomia squamula</i> (Linnaeus, 1758)		+	+		II,III	Ss	
<i>Pododesmus patelliformis</i> (Linnaeus, 1761)	+	+	+		II,III	Ss	= <i>Monia patelliformis</i>
<i>Pododesmus squama</i> (Gmelin, 1791)		+	+		II,III	Ss	= <i>Monia squama</i>
<b>Arcidae</b>							
<i>Acar clathrata</i> (Defrance, 1816)			+	+	V,VI	Ss	
<i>Anadara corbuloides</i> (Monterosato, 1880)		+	+		II	Ss	
<i>Anadara gibbosa</i> (Reeve, 1844)	+	+	+	+	I-IV	Ss	= <i>Anadara polii</i>
* <i>Anadara kagoshimensis</i> (Tokunaga, 1906)	+	+	+		II	Ss	
* <i>Anadara natalensis</i> (Krauss, 1848)				+	I	Ss	
* <i>Anadara transversa</i> (Say, 1822)			+	+	I,II	Ss	
<i>Arca noae</i> Linnaeus, 1758	+	+	+	+	I,II	Hs	
<i>Barbatia barbata</i> (Linnaeus, 1758)		+	+	+	II-IV	Ss	
<i>Bathyarca pectunculoides</i> (Scacchi, 1835)		+	+		III-V	Ss	
<i>Bathyarca philippiana</i> (Nyst, 1848)		+	+	+	IV	Ss	
<i>Tetrarca tetragona</i> (Poli, 1795)	+	+	+	+	II-IV	Ss	= <i>Arca tetragona</i>
<b>Astartidae</b>							
<i>Astarte sulcata</i> (da Costa, 1778)		+	+	+	II, III	Ss	
<i>Digitaria digitaria</i> (Linnaeus, 1758)				+	I	Ss	
<i>Gonilia calliglypta</i> (Dall, 1903)		+	+	+	II-IV	Ss	
<i>Goodallia pusilla</i> (Forbes, 1844)			+		III	Ss	
<i>Goodallia triangularis</i> (Montagu, 1803)			+	+	II, III	Ss	
<i>Laevastarte fusca fusca</i> (Poli, 1791)		+	+	+	III-IV	Ss	= <i>Astarte fusca</i>
<b>Basterotiidae</b>							
<i>Saxicavella jeffreysi</i> Winckworth, 1930		+	+	+	V	Ss	

Table 1. (Continued.)

**Cardiidae**

<i>Acanthocardia aculeata</i> (Linnaeus, 1758)		+	+		I,II	Ss	
<i>Acanthocardia deshayesii</i> (Payraudeau, 1826)		+	+	+	III	Ss	
<i>Acanthocardia echinata</i> (Linnaeus, 1758)		+	+	+	I-III	Ss	
<i>Acanthocardia paucicostata</i> (Sowerby G. B.II, 1834)	36	+	+	+	I-VII	Ss	
<i>Acanthocardia spinosa</i> (Lightfoot, 1786)			+	+	II	Ss	
<i>Acanthocardia tuberculata</i> (Linnaeus, 1758)		+	+	+	I-III	Ss	
* <i>Afrocardium richardi</i> (Audouin, 1826)				+	I, II	Hs, Ss	
<i>Cerastoderma glaucum</i> (Bruguière, 1789)		+	+	+	I,II	Ss	
* <i>Fulvia fragilis</i> (Forsskål, 1775)				+	I	Ss	
<i>Laevicardium crassum</i> (Gmelin, 1791)		+	+	+	II,III	Ss	
<i>Laevicardium oblongum</i> (Gmelin, 1791)		+	+	+	II,III	Ss	
<i>Papillicardium minimum</i> (Philippi, 1836)		+	+	+	II-IV	Ss	= <i>Parvicardium minimum</i>
<i>Papillicardium papillosum</i> (Poli, 1791)		+	+	+	I-IV	Ss	
<i>Parvicardium exiguum</i> (Gmelin, 1791)		+	+	+	I-VII	Ss	
<i>Parvicardium pinnulatum</i> (Conrad, 1831)			+	+	I-III	Ss	
<i>Parvicardium scabrum</i> (Philippi, 1844)		+	+	+	II	Ss	
<i>Parvicardium scriptum</i> (Bucquoy, Dautzenberg & Dollfus, 1892)				+	2	I	Ss
<i>Parvicardium simile</i> (Milaschewitsch, 1909)	36					II	Ss In the Black Sea only
<i>Parvicardium trapezium</i> Cecalupo & Quadri, 1996				+	?	?	
<i>Parvicardium vroomi</i> van Aartsen, Menkhorst & Gittenberger, 1984			+			II-IV	Ss

**Carditidae**

<i>Cardita calyculata</i> (Linnaeus, 1758)		+	+	+	I	Ss	
<i>Cardites antiquatus</i> (Linnaeus, 1758)		+	+	+	I-IV	Ss	
<i>Centrocardita aculeata</i> (Poli, 1795)		+	+	+	I-VI	Ss	
<i>Coripia corbis</i> (Philippi, 1836)			+	+	I	Ss	
<i>Coripia jozinae</i> (van Aartsen, 1985)				+	I	Ss	
<i>Glans trapezia</i> (Linnaeus, 1767)		+	+	+	I-IV	Ss	

**Chamidae**

* <i>Chama asperella</i> Lamarck, 1819		+	+	+	I	Hs	
<i>Chama circinata</i> Monterosato, 1878		+	+	+	?	?	
<i>Chama gryphoides</i> Linnaeus, 1758		+	+	+	I-VII	Hs, Ss	
* <i>Chama pacifica</i> Broderip, 1835				+	I	Hs	
<i>Pseudochama gryphina</i> (Lamarck, 1819)		+	+	+	I	Hs	

**Corbulidae**

<i>Varicorbula gibba</i> (Olivi, 1792)		+	+	+	I-VII	Ss	= <i>Corbula gibba</i>
<i>Lentidium mediterraneum</i> (Costa, O.G., 1830)		+	+	+	II,III	Ss	

**Cuspidariidae**

<i>Cardiomya costellata</i> (Deshayes, 1835)		+	+	+	II-V	Ss	
<i>Cuspidaria cuspidata</i> (Olivi, 1792)		+	+	+	II-VII	Ss	
<i>Cuspidaria rostrata</i> (Spengler, 1793)		+	+	+	II-IV	Ss	
<i>Tropidomya abbreviata</i> (Forbes, 1843)		+	+	+	III-V	Ss	

**Donacidae**

<i>Donax variegatus</i> (Gmelin, 1791)		+	+	+	I,II	Ss	
<i>Donax semistriatus</i> Poli, 1795			+	+	I	Ss	
<i>Donax trunculus</i> Linnaeus, 1758		+	+	+	I,II	Ss	
<i>Donax venustus</i> Poli, 1795	36	+	+	+	I,II	Ss	
<i>Donax vittatus</i> (da Costa, 1778)				+	I	Ss	

Table 1. (Continued.)

**Galeommatidae**

*Galeomma turtoni* Turton, 1825 + + + I Ss

\**Nudiscintilla glabra* Lützen & Nielsen, 2005 38 + I Hs

**Gastrochaenidae**

\**Cucurbitula cymbium* (Spengler, 1783) + + + I-III Hs

*Rocellaria dubia* (Pennant, 1777) + + + + I-III Hs =*Gastrochaena dubia*

**Glossidae**

*Glossus humanus* (Linnaeus, 1758) + + + II-IV Ss

**Glycymerididae**

*Glycymeris bimaculata* (Poli, 1795) + + + III Ss

*Glycymeris glycymeris* (Linnaeus, 1758) + + + I-III Ss

*Glycymeris nummaria* (Linnaeus, 1758) + + + I,II Ss

**Gryphaeidae**

*Neopycnodonte cochlear* (Poli, 1795) + + 27 II,III Ss

**Hiatellidae**

*Hiatella arctica* (Linnaeus, 1767) + + + + I-V Hs

*Hiatella rugosa* (Linnaeus, 1767) + + I-III Hs

**Isognomonidae**

\**Isognomon bicolor* (Adams, C. B., 1845) PS<sup>4,5,6</sup> I Hs

\**Isognomon legumen* (Gmelin, 1791) 58 I Hs

**Kelliellidae**

*Kelliella miliaris* (R.A. Philippi, 1844) + + + II-VII Ss

**Lasaeidae**

*Bornia sebetia* (Costa, O.G., 1830) + + + I Ss

*Epilepton parrussetense* Giribet & Peñas, 1999 + ? ? =*Mancikellia parrussetensis*

*Hemilepton nitidum* (Turton, 1822) + + + + I-IV Ss

*Kellia suborbicularis* (Montagu, 1803) + + + + I-III Ss

*Kurtiella bidentata* (Montagu, 1803) + + + + I-VII Ss

*Lasaea adansonii* (Gmelin, 1791) + + + I Ss

*Lepton squamosum* (Montagu, 1803) + + + II, III Ss

*Litigiella glabra* (Fischer, 1873) + + + I Ss

*Mioerycina coarctata* (Wood, 1851) + + ? ? =*Montacuta phascolionis*

*Montacuta substriata* (Montagu, 1808) + + + II,III Ss

*Scacchia oblonga* (Philippi, 1836) + + + I-IV Ss

*Tellimya ferruginosa* (Montagu, 1808) + + + I-V Ss

**Laternulidae**

\**Laternula anatina* (Linnaeus, 1758) + ? ?

**Limidae**

*Lima lima* (Linnaeus, 1758) + + + + I Hs

*Lima marioni* Fischer, 1882 + + + III Ss

*Limaria hians* (Gmelin, 1791) + + + II,III Ss

*Limaria loscombi* (Sowerby I, G. B., 1823) + + + I-III Ss

*Limaria tuberculata* (Olivi, 1792) + 3 + + I,II Ss

*Limatula gwyni* (Sykes, 1903) + + + I-IV Ss

*Limatula subauriculata* (Montagu, 1808) + + + III Ss

**Lucinidae**

*Ctena decussata* (Costa, O.G., 1829) + + + I, II Ss

*Loripes orbiculatus* Poli, 1795 + + + + I-VII Ss =*Loripes lucinalis*

Table 1. (Continued.)

<i>Loripinus fragilis</i> (Philippi, 1836)		+	+	+	I-III	Ss	= <i>Anodontia fragilis</i>
<i>Lucinella divaricata</i> (Linnaeus, 1758)	+	+	+	+	I-VII	Ss	
<i>Lucinoma borealis</i> (Linnaeus, 1767)	+	+	+		II-VII	Ss	
<i>Lucinoma kazani</i> Salas & Woodside, 2002		+			VI, VII	Ss	
<i>Megaxinus unguiculinus</i> Pallary, 1904				+	I	Ss	
<i>Myrtea amorphia</i> (Sturany, 1896)		+			VI, VII	Ss	
<i>Myrtea spinifera</i> (Montagu, 1803)	+	+	+	+	I-VII	Ss	
<b>Lyonsiidae</b>							
<i>Lyonsia norwegica</i> (Gmelin, 1791)				+	?	?	
<b>Mactridae</b>							
<i>Lutraria angustior</i> Philippi, 1844				+	III	Ss	
<i>Mactra glauca</i> Born, 1778		+	+		?	?	
<i>Mactra stultorum</i> (Linnaeus, 1758)	+	+	+	+	I	Ss	
<i>Spisula solida</i> (Linnaeus, 1758)	+	+			?	?	
<i>Spisula subtruncata</i> (da Costa, 1778)	+	+	+	+	I-III	Ss	
<b>Malleidae</b>							
* <i>Malleus regula</i> (Forsskål in Niebuhr, 1775)				+	I	Hs	
<b>Margaritidae</b>							
* <i>Pinctada radiata</i> (Leach, 1814)				+	I	Hs	
<b>Mesodesmatidae</b>							
<i>Donacilla cornea</i> (Poli, 1791)	+	+	+	+	I	Ss	
<b>Myidae</b>							
* <i>Mya arenaria</i> Linnaeus, 1758	+	+	+		II	Ss	
<i>Sphenia binghami</i> Turton, 1822		+	+	+	I,II	Ss	
* <i>Sphenia rueppellii</i> Adams, 1851				+	I	Hs	
<b>Mytilidae</b>							
* <i>Arcuatula perfragilis</i> (Dunker, 1857)				+	I	Ss	
* <i>Arcuatula senhousia</i> (Benson, 1842)		46	+	+	I,II	Ss	
* <i>Brachidontes pharaonis</i> (Fischer, 1870)			+	+	I	Hs	
<i>Dacrydium hyalinum</i> (Monterosato, 1875)	+	+			II-IV	Ss	
<i>Gregariella petagnae</i> (Scacchi, 1832)			+	+	I	Hs	
<i>Lioberus agglutinans</i> (Cantraine, 1835)				+	I	Ss	
<sup>BC</sup> <i>Lithophaga lithophaga</i> (Linnaeus, 1758)		+	+	+	I	Hs	
<i>Modiolula phaseolina</i> (Philippi, 1844)	+	+	+	+	II-VI	Hs, Ss	
<i>Modiolus adriaticus</i> Lamarck, 1819	36	+	+	+	I-V	Ss	= <i>Gibbomodiola adriatica</i>
<i>Modiolus barbatus</i> (Linnaeus, 1758)	+	+	+	+	I-III	Hs, Ss	
<i>Musculus costulatus</i> (Risso, 1826)		+	+	+	I,II	Hs	
<i>Musculus discors</i> (Linnaeus, 1767)			+		I,II	Ss	
<i>Musculus subpictus</i> (Cantraine, 1835)	+	+	+	+	I-IV	Hs, Ss	= <i>Modiolarca subpicta</i>
<i>Mytilaster lineatus</i> (Gmelin, 1791)	+	+	+	+	I-III	Ss	
<i>Mytilaster marioni</i> (Locard, 1889)			+		I,II	Hs	
<i>Mytilaster minimus</i> (Poli, 1795)		+	+	+	I	Hs	
<i>Mytilaster solidus</i> Monterosato, 1883			10	+	I	Hs	
<i>Mytilus galloprovincialis</i> Lamarck, 1819	+	+	+	+	I-III	Hs, Ss	
<i>Rhomboidella prideauxi</i> (Leach, 1815)			+		II	Ss	
* <i>Septifer cumingii</i> Récluz, 1849			10	+	I	Hs	
<b>Neoleptonidae</b>							
<i>Neolepton sulcatulum</i> (Jeffreys, 1859)		+	+		II,III	Ss	

Table 1. (Continued.)

<b>Noetiidae</b>						
<i>Striarca lactea</i> (Linnaeus, 1758)	+	+	+	+	I-IV	Hs, Ss
<b>Ostreidae</b>						
* <i>Dendostrea folium</i> (Linnaeus, 1758)			65	+	I	Hs established as <i>D. frons</i>
* <i>Magallana gigas</i> (Thunberg, 1793)		+	+	+	I	Hs = <i>Crassostrea gigas</i>
<i>Ostrea edulis</i> Linnaeus, 1758	+	+	+	+	I-IV	Hs
<i>Ostrea stentina</i> Payraudeau, 1826			+	+	I	Hs
* <i>Saccostrea cucullata</i> (Born, 1778)				+	I,II	Hs
<b>Pandoridae</b>						
<i>Pandora inaequivalvis</i> (Linnaeus, 1758)		+	+	+	I-III	Ss
<i>Pandora pinna</i> (Montagu, 1803)		+	+		II, III	Ss
<b>Pectinidae</b>						
<i>Aequipecten opercularis</i> (Linnaeus, 1758)		+	+	+	II-VII	Ss
<i>Delectopecten vitreus</i> (Gmelin, 1791)		+	+		III-VII	Ss
<i>Flexopecten flexuosus</i> (Poli 1795)	+	+	+	+	II,III	Ss
<i>Flexopecten glaber</i> (Linnaeus, 1758)	36	+	+	+	I-VII	Ss
<i>Flexopecten hyalinus</i> (Poli, 1795)		+	+	+	II-IV	Ss
<i>Karnekipia sulcata</i> (Müller, O.F., 1776)			+		I	Ss = <i>Pseudamussium sulcatum</i>
<i>Manupecten pesfelis</i> (Linnaeus, 1758)		+	+	+	I	Hs, Ss
<i>Mimachlamys varia</i> (Linnaeus, 1758)	+	+	+	+	I-III	Ss
<i>Palliolium incomparabile</i> (Risso, 1826)		+	+	+	II-IV	Ss
<i>Palliolium striatum</i> (Müller, O. F., 1776)		+	+		III	Ss
<i>Pecten jacobaeus</i> (Linnaeus, 1758)	+	+	+	+	II,III	Ss
<i>Pseudamussium clavatum</i> (Poli, 1795)	+	+	+	+	II-IV	Ss
<i>Pseudamussium peslutrae</i> (Linnaeus, 1771)			+		IV	Ss
<i>Talochlamys multistriata</i> (Poli, 1795)		+	+	+	I,II	Ss
<i>Talochlamys pusio</i> (Linnaeus, 1758)		+	+		III,IV	Ss
<b>Pharidae</b>						
<i>Ensis ensis</i> (Linnaeus, 1758)	+	+	+	+	I-IV	Ss
<i>Ensis minor</i> (Chenu, 1843)		+	+	+	I	Ss
<i>Ensis siliqua</i> (Linnaeus, 1758)		+			?	?
<i>Pharus legumen</i> (Linnaeus, 1758)		+	+	+	I,II	Ss
<i>Phaxas pellucidus</i> (Pennant, 1777)		+	+	+	II,III	Ss
<b>Pholadidae</b>						
<i>Barnea candida</i> (Linnaeus, 1758)	+	+	+	+	?	?
* <i>Martesia striata</i> (Linnaeus, 1758)				18	I	Hs
<sup>BC</sup> <i>Pholas dactylus</i> Linnaeus, 1758	+	+	+	+	I	Hs
<i>Xylophaga dorsalis</i> (Turton, 1819)		+		+	I-VII	Hs, Ss
<b>Pinnidae</b>						
<i>Atrina fragilis</i> (Pennant, 1777)		+	+	+	II	Ss
<sup>BC</sup> <i>Pinna nobilis</i> Linnaeus, 1758		+	+	+	I-III	Ss
<b>Poromyidae</b>						
<i>Poromya granulata</i> (Nyst & Westendorp, 1839)		+	+	+	II-IV	Ss
<b>Propeamussiidae</b>						
<i>Cyclopecten hoskynsi</i> (Forbes, 1844)				+	V	Ss
<i>Parvamussium fenestratum</i> (Forbes, 1844)		+	+	+	II-V	Ss
<i>Similipecten similis</i> (Laskey, 1811)		+	+	+	II-V	Ss
<b>Psammobiidae</b>						

Table 1. (Continued.)

<i>Gari costulata</i> (Turton, 1822)		+	+	+	I-III	Ss	
<i>Gari depressa</i> (Pennant, 1777)		+	+	+	I-III	Ss	
<i>Gari fervensis</i> (Gmelin, 1791)		+	+	+	I,II	Ss	
<i>Gari tellinella</i> (Lamarck, 1818)				+	I	Ss	
<b>Pteriidae</b>							
<i>Pteria hirundo</i> (Linnaeus, 1758)		+	+	+	II-IV	Hs, Ss	
<b>Semelidae</b>							
<i>Abra alba</i> (Wood, 1802)	36	+	+	+	I-VII	Ss	
<i>Abra longicallus</i> (Scacchi, 1835)		+	+	+	I-VII	Ss	
<i>Abra nitida</i> (Müller, O.F., 1776)	+	+	+	+	I-VI	Ss	
<i>Abra prismatica</i> (Montagu, 1808)	36	+	+	+	II,III	Ss	
<i>Abra segmentum</i> (Récluz, 1843)	36	+	+	+	I, II	Ss	
<i>Abra tenuis</i> (Montagu, 1803)			+		I	Ss	
* <i>Ervilia scaliola</i> Issel, 1869				+	I	Ss	
<i>Scrobicularia cottardii</i> (Payraudeau, 1826)			+	+	I	Ss	
<i>Scrobicularia plana</i> (da Costa, 1778)		+	+		?	?	
<b>Solecurtidae</b>							
<i>Azorinus chamasolen</i> (da Costa, 1778)		+	+	+	I-VII	Ss	
<i>Solecurtus scopula</i> (Turton, 1822)		+	+	+	III	Ss	
<i>Solecurtus strigilatus</i> (Linnaeus, 1758)	+	+	+	+	I	Ss	
<b>Solenidae</b>							
<i>Solen marginatus</i> Pulteney, 1799	+	+	+	+	I	Ss	
<b>Spondylidae</b>							
<i>Spondylus gaederopus</i> Linnaeus, 1758		+	+	+	I	Hs	
<i>Spondylus gussonii</i> Costa O.G., 1830		+			VI, VII	Ss	
* <i>Spondylus spinosus</i> Schreibers, 1793			+	+	I	Hs	
<b>Sportellidae</b>							
<i>Sportella recondita</i> (Fischer, 1872)		+			III	Ss	
<b>Tellinidae</b>							
<i>Arcopella balaustina</i> (Linnaeus, 1758)		+	+	+	I-IV	Ss	= <i>Arcopagia balaustina</i>
<i>Asbjornsenia pygmaea</i> (Lovén, 1846)		+		+	I,II	Ss	= <i>Tellina pygmaea</i>
<i>Bosemprella incarnata</i> (Linnaeus, 1758)		+	+	+	I,II	Ss	= <i>Tellina incarnata</i>
<i>Fabulina fabula</i> (Gmelin, 1791)	39	20	20	20	I	Ss	= <i>Tellina fabula</i>
<i>Gastrana fragilis</i> (Linnaeus, 1758)	36	+	+	+	I-II	Ss	
<i>Macomangulus tenuis</i> (da Costa, 1778)		+	+	+	I,II	Ss	= <i>Tellina tenuis</i>
<i>Macomopsis cumana</i> (Costa, O.G., 1830)		+		+	II	Ss	= <i>Macoma cumana</i>
<i>Moerella donacina</i> (Linnaeus, 1758)	36	+	+	+	I-III	Ss	
<i>Moerella distorta</i> (Poli, 1791)	+	+	+	+	I-III	Ss	= <i>Tellina distorta</i>
<i>Moerella pulchella</i> (Lamarck, 1818)		+	+	+	II-VII	Ss	= <i>Tellina pulchella</i>
* <i>Nitidotellina valtonis</i> (Hanley, 1844)				+	I	Ss	= <i>Tellina valtonis</i>
<i>Peronidia albicans</i> (Gmelin, 1791)		+	+	+	I-VII	Ss	= <i>Tellina albicans</i>
<i>Peronaea planata</i> (Linnaeus, 1758)		+	+	+	I,II	Ss	= <i>Tellina planata</i>
* <i>Psammacoma gubernaculum</i> (Hanley, 1844)		+		+	IV	Ss	
<i>Serrania serrata</i> (Brocchi, 1814)	+	+	+	+	II,III	Ss	= <i>Tellina serrata</i>
<b>Teredinidae</b>							
<i>Bankia carinata</i> (Gray, 1827)		+	+	+	I	Hs	
<i>Lyrodus pedicellatus</i> (Quatrefages, 1849)	+	+	+	+	I	Hs	
<i>Nototeredo norvagica</i> (Spengler, 1792)	+	+		+	II	Ss	
* <i>Teredo bartschi</i> Clapp, 1923				+	I	Hs	



Table 1. (Continued.)

* <i>Teredo navalis</i> Linnaeus, 1758	+	+	+	+	I	Hs	
* <i>Teredothyra dominicensis</i> (Bartsch, 1921)				+	II,III	Hs	
<b>Thraciidae</b>							
<i>Thracia convexa</i> (Wood, 1815)		+	+	+	II	Ss	
<i>Thracia corbuloidea</i> de Blainville, 1827		+	+	+	I	Ss	
<i>Thracia distorta</i> (Montagu, 1803)		+	+		I, II	Ss	
<i>Thracia phaseolina</i> (Lamarck, 1818)		+	+	+	I-IV	Ss	
<i>Thracia pubescens</i> (Pulteney, 1799)		+	+	+	II, III	Ss	
<b>Thyasiridae</b>							
<i>Genaxinus eumyari</i> (Sars, 1870)		+			?	Ss	= <i>Axinulus eumyari</i>
<i>Axinulus alleni</i> (Carrozza, 1981)		+	5	5	II-V	Ss	= <i>Thyasira alleni</i>
<i>Thyasira biplicata</i> (Philippi, 1836)		+	+		III, IV	Ss	
<i>Thyasira flexuosa</i> (Montagu, 1803)		+	+	+	I-V	Ss	
<i>Parathyasira granulosa</i> (Monterosato, 1874)		+	+		III-VII	Ss	= <i>Thyasira granulosa</i>
<b>Trapezidae</b>							
<i>Coralliophaga lithophagella</i> (Lamarck, 1819)		+	+		II,III	Ss	
<b>Ungulinidae</b>							
<i>Diplodonta brocchii</i> (Deshayes, 1850)		+	+	+	?	?	
<i>Diplodonta rotundata</i> (Montagu, 1803)		+	+	+	I-III	Ss	
<i>Microstagon trigonum</i> (Scacchi, 1835)				+	I	?	= <i>Diplodonta trigona</i>
* <i>Transkeia bogii</i> (van Aartsen, 2004)				PS <sup>7</sup>	I	Ss	= <i>Diplodonta bogii</i>
<b>Veneridae</b>							
<i>Callista chione</i> (Linnaeus, 1758)			+	+	+	I,II	Ss
<i>Chamelea gallina</i> (Linnaeus, 1758)		+	+	+	+	I-VII	Ss
<i>Chamelea striatula</i> (da Costa, 1778)			+			I	Ss
<i>Clausinella fasciata</i> (da Costa, 1778)		+	+	+	+	II-VI	Ss
* <i>Clementia papyracea</i> (Gmelin, 1791)					+	I	Ss
<i>Dosinia exoleta</i> (Linnaeus, 1758)		+	+	+	+	I,II	Ss
<i>Dosinia lupinus</i> (Linnaeus, 1758)			+	+	+	I-III	Ss
* <i>Gafrarium savignyi</i> (Jonas, 1846)					+	I	Ss
<i>Globivenus effossa</i> (Philippi, 1836)			+	+		II-VI	Ss
<i>Gouldia minima</i> (Montagu, 1803)		+	+	+	+	I-VII	Ss
* <i>Microcirce consternans</i> Oliver & Zuschin, 2001					+	I	Ss
<i>Irus irus</i> (Linnaeus, 1758)		+	+	+	+	I,II	Hs, Ss
<i>Lajonkairia lajonkairii</i> (Payraudeau, 1826)				+	+	I	Ss
<i>Mysia undata</i> (Pennant, 1777)			+	+	+	I-III	Ss
* <i>Paratapes textile</i> (Gmelin, 1791)					+	I,II	Ss
* <i>Petricola fabagella</i> Lamarck, 1818					+	I	Hs
<i>Petricola lithophaga</i> (Retzius, 1788)		+	+	+	+	I,II	Hs, Ss
<i>Pitar mediterraneus</i> (Aradas & Benoit, 1872)		+	+			II,III	Ss
<i>Pitar rudis</i> (Poli, 1795)		+	+	+	+	I-VII	Ss
<i>Polittitapes aureus</i> (Gmelin, 1791)		+	+	+	+	I-VII	Ss
<i>Polittitapes rhomboides</i> (Pennant, 1777)			+	+	+	I	Ss
<i>Ruditapes decussatus</i> (Linnaeus, 1758)			+	+	+	I	Ss
* <i>Ruditapes philippinarum</i> (Adams & Reeve, 1850)			+	+		I,II	Ss
<i>Timoclea ovata</i> (Pennant, 1777)		+	+	+	+	I-VII	Ss
* <i>Timoclea roemeriana</i> (Issel, 1869)					47	II	Ss
<i>Venerupis corrugata</i> (Gmelin, 1791)			+	+	+	I,II	Ss
<i>Venus casina</i> Linnaeus, 1758		+	+	+	+	II,III	Ss

Table 1. (Continued.)

<i>Venus nux</i> Gmelin, 1791					+		III	Ss			
<i>Venus verrucosa</i> Linnaeus, 1758					+	+	+	I-VI	Ss		
<b>Verticordiidae</b>											
<i>Haliris granulata</i> (Seguenza, 1860)							+	IV	Ss = <i>Verticordia granulata</i>		
<b>Vesicomyiidae</b>											
<i>Isorropodon perplexum</i> Sturany, 1896							+	VII	Ss		
<b>Vulsellidae</b>											
* <i>Electroma vexillum</i> (Reeve, 1857)							+	I	Hs		
<b>Xylophagidae</b>											
<i>Xylophaga dorsalis</i> (Turton, 1819)							+	+	I-VII Hs, Ss		
<b>Subclass: Protobranchia</b>											
<b>Nuculidae</b>											
<i>Ennucula aegeensis</i> (Forbes, 1844)							+	+	+	III-VII Ss	
<i>Ennucula tenuis</i> (Montagu, 1808)							+			V Ss	
<i>Nucula hanleyi</i> Winckworth, 1931							+	+	+	I-III Ss	
<i>Nucula nitidosa</i> Winckworth, 1930							+	+	+	II-IV Ss	
<i>Nucula nucleus</i> (Linnaeus, 1758)							+	+	+	+	I-III Ss
<i>Nucula sulcata</i> Bronn, 1831							+	+	+	+	I-VII Ss
<i>Nucula tumidula</i> Malm, 1861									+		II Ss
<b>Nuculanidae</b>											
<i>Lembulus pella</i> (Linnaeus, 1758)							+	+	+	+	I-VII Ss = <i>Nuculana pella</i>
<i>Saccella commutata</i> (R.A. Philippi, 1844)							+	+	+	+	II-VII Ss
<b>Solemyidae</b>											
<i>Solemya togata</i> (Poli, 1791)							+	+			II Ss
<b>Yoldiidae</b>											
<i>Yoldiella philippiana</i> (Nyst, 1845)							+				VI, VII Ss
<i>Yoldiella striolata</i> (Brugnone, 1876)							+				VII Ss
<b>Class: CAUDOFOVEATA</b>											
<b>Chaetodermatidae</b>											
<i>Falcidens gutturosus</i> (Kowalevsky, 1901)							+	+	+		III-VII Ss
<b>Prochaetodermatidae</b>											
<i>Prochaetoderma raduliferum</i> (Kowalevsky, 1901)							+		+		II-VII Ss
<b>Class: GASTROPODA</b>											
<b>Subclass: Caenogastropoda</b>											
<b>Anabathridae</b>											
<i>Nodulus contortus</i> (Jeffreys, 1856)									+		I Hs
<i>Pisinna glabrata</i> (Megerle von Mühlfeld, 1824)									+		I Hs
<b>Aporrhaidae</b>											
<i>Aporrhais pespelecani</i> (Linnaeus, 1758)							+	+	+	+	I-III Ss
<i>Aporrhais serresiana</i> (Michaud, 1828)							+	+			II-VII Ss
<b>Assimineidae</b>											
<i>Paludinella globularis</i> (Hanley, 1844)									+	+	I Hs
<b>Atlantidae</b>											
<i>Atlanta brunnea</i> Gray, J. E., 1850										+	- P
<i>Atlanta peronii</i> Lesueur, 1817							+	+	+		VII P
<b>Barleeiidae</b>											
<i>Barleeia unifasciata</i> (Montagu, 1803)									+	+	I Hs
<b>Borsoniidae</b>											
<i>Drilliola loprestiana</i> (Calcara, 1841)									+	+	III, IV Ss

Table 1. (Continued.)

**Caecidae**

<i>Caecum armoricum</i> de Folin, 1869	PS <sup>1</sup>	67	+	+	I, II	Hs, Ss
<i>Caecum auriculatum</i> de Folin, 1868			+	+	I,II	Hs, Ss
<i>Caecum clarkii</i> Carpenter, 1859				+	I	Ss
* <i>Caecum sepimentum</i> de Folin, 1868					+	II
<i>Caecum subannulatum</i> de Folin, 1870			+	+	I-IV	Hs, Ss
<i>Caecum trachea</i> (Montagu, 1803)	+	+	+	+	I-V	Hs, Ss
<i>Parastrophia asturiana</i> de Folin, 1870			+	+	+	I,II

**Calyptraeidae**

<i>Calyptraea chinensis</i> (Linnaeus, 1758)	36	+	+	+	I-III	Ss
* <i>Crepidula fornicata</i> (Linnaeus, 1758)					+	I,II
<i>Crepidula moulinsii</i> Michaud, 1829			+	+	47	I-III
<i>Crepidula unguiformis</i> Lamarck, 1822			+	+	47	I,II

**Capulidae**

<i>Capulus ungaricus</i> (Linnaeus, 1758)			+	+	+	I-III
---	--	--	---	---	---	-------

**Carinariidae**

<i>Carinaria lamarckii</i> de Blanville, 1817					+	?
---	--	--	--	--	---	---

**Cassidae**

<i>Galeodea echinophora</i> (Linnaeus, 1758)			+	+	+	II-VII
<i>Semicassis granulata</i> (Born, 1778)					+	+
<i>Semicassis saburon</i> (Brugière, 1792)					+	II,III

**Cerithiidae**

<i>Bittium lacteum</i> (Philippi, 1836)			+	+		II	Ss
<i>Bittium latreillii</i> (Payraudeau, 1826)			+	+	+	I-V	Hs, Ss
<i>Bittium reticulatum</i> (da Costa, 1778)	+	+	+	+	+	I-IV	Hs, Ss
* <i>Cerithidium diplax</i> (Watson, 1886)						+	I,II
* <i>Cerithidium perparvulum</i> (Watson, 1886)						+	I,II
<i>Cerithidium submamillatum</i> (de Rayneval & Ponzi, 1854)	+	+	+	+	+	II-VI	Ss = <i>Bittium submamillatum</i>
<i>Cerithium alucastrum</i> (Brocchi, 1814)			+	+	+	I-III	Ss
<i>Cerithium lividulum</i> Risso, 1826						+	I
<i>Cerithium protractum</i> Bivona, 1838			+	+	47	I-III	Hs, Ss
<i>Cerithium renovatum</i> Monterosato, 1884			+			I,II	Ss
* <i>Cerithium scabridum</i> Philippi, 1848						+	+
<i>Cerithium vulgatum</i> Bruguière, 1792	+	+	+	+	+	I-III	Hs, Ss
* <i>Rhinoclavis kochi</i> (Philippi, 1848)						+	I,II
* <i>Varicopeza pauxilla</i> (Adams, A., 1855)					46	II,III	Ss

**Cerithiopsidae**

<i>Cerithiopsis barleei</i> Jeffreys, 1867			+	+	+	I	Hs, Ss
<i>Cerithiopsis diadema</i> Monterosato, 1874					47	I-III	Hs
<i>Cerithiopsis fayalensis</i> Watson, 1880			+	+	5	II-IV	Ss
<i>Cerithiopsis greppii</i> Buzzurro & Cecalupo, 2005					+	+	I
<i>Cerithiopsis jeffreysi</i> Watson, 1885						+	II
<i>Cerithiopsis minima</i> (Brusina, 1865)	+	+	+	+	+	I-III	Hs, Ss
* <i>Cerithiopsis pulvis</i> (Issel, 1869)						+	I,II
<i>Cerithiopsis scalaris</i> Locard, 1891			+			I	Ss
* <i>Cerithiopsis tenthrenois</i> (Melvill, 1896)						+	I
<i>Cerithiopsis tubercularis</i> (Montagu, 1803)	+	+	+	+	+	I-III	Hs, Ss
<i>Costulopsis buzzurroi</i> (Cecalupo & Robba, 2010)						+	II

Table 1. (Continued.)

<i>Costulopsis denticulata</i> (Cecalupo & Robba, 2010)				+	I,II	Ss	= <i>Cerithiopsis denticulata</i>
<i>Costulopsis nana</i> (Jeffreys, 1867)				+	I,II	Ss	= <i>Cerithiopsis nana</i>
<i>Dizoniopsis coppolae</i> (Aradas, 1870)		+	+	+	I-III	Ss	
<i>Dizoniopsis bilineata</i> (Hoernes, 1848)				+	I	Ss	
<i>Krachia tiara</i> (Monterosato, 1874)			+		III	Ss	
<i>Seila trilineata</i> (Philippi, 1836)				+	I-III	Ss	
<b>Charoniidae</b>							
<sup>BC</sup> <i>Charonia variegata</i> (Lamarck, 1816)				+	+	I-III	Hs
<b>Cochliopidae</b>							
<i>Eupaludestrina stagnorum</i> (Gmelin, 1791)		+			I	Hs, Ss	= <i>Heleobia stagnorum</i>
<b>Chauvetiidae</b>							
<i>Chauvetia brunnea</i> (Donovan, 1804)		+	+	+	I-III	Ss	
<i>Chauvetia mamillata</i> (Risso, 1826)		+	+		II	Hs, Ss	
<i>Chauvetia turritellata</i> (Deshayes, 1835)			+	+	I,II	Ss	
<b>Cingulopsidae</b>							
<i>Eatonina ochroleuca</i> (Brusina, 1869)		+	+		II-IV	Ss	
<i>Eatonina pumila</i> (Monterosato, 1884)			52	+	I	Ss	
<b>Clathurellidae</b>							
* <i>Lienardia mighelsi</i> Iredale & Tomlin, 1917				+	III	Ss	
<i>Pleurotomoides gracilis</i> (Montagu, 1803)		+	+	+	II-IV	Ss	= <i>Comarmondia gracilis</i>
<b>Colubrariidae</b>							
<i>Cumia intertexta</i> (Helbling, 1779)				+	I	Ss	= <i>Colubraria reticulata</i>
<b>Columbellidae</b>							
<i>Columbella rustica</i> (Linnaeus, 1758)		+	+	+	I	Hs, Ss	
<i>Mitrella gervillii</i> (Payraudeau, 1826)		+	+	+	I,II	Hs, Ss	
<i>Mitrella minor</i> (Scacchi, 1836)				+	+	II,III	Ss
<i>Mitrella scripta</i> (Linnaeus, 1758)		+	+	+	+	I-III	Hs, Ss
* <i>Zafra obesula</i> (Hervier, 1900)					51	II	Ss
* <i>Zafra pumila</i> (Dunker, 1860)					51	II	Ss
* <i>Zafra savignyi</i> (Moazzo, 1939)				+	I,II	Hs, Ss	
* <i>Zafra selasphora</i> (Melvil & Standen, 1901)				+	I,II	Hs, Ss	
<b>Conidae</b>							
<i>Conus ventricosus</i> Gmelin, 1791		+	+	+	I-III	Hs, Ss	
<b>Costellariidae</b>							
<i>Pusia ebenus</i> (Lamarck, 1811)		+	+	+	I-IV	Hs, Ss	
<i>Pusia granum</i> (Forbes, 1844)		+	+	+	I-V	Hs, Ss	
<i>Pusia savignyi</i> (Payraudeau, 1826)			+	+	?	?	= <i>Vexillum savignyi</i>
<i>Pusia tricolor</i> (Gmelin, 1791)		+	+	+	I,II	Hs, Ss	
<i>Vexillum hypatiae</i> (Pallary, 1912)			5	+	I, II	Ss	
<b>Cymatiidae</b>							
<i>Cabestana cutacea</i> (Linnaeus, 1767)				+	II, III	Ss	
<i>Monoplex corrugatus</i> (Lamarck, 1816)		+	+		II-V	Hs	
<i>Monoplex parthenopeus</i> (Salis Marschlins, 1793)				+	I-III	Hs	
<b>Cypraeidae</b>							
<sup>BC</sup> <i>Luria lurida</i> (Linnaeus, 1758)				+	+	I,II	Hs
<sup>BC</sup> <i>Naria spurca</i> (Linnaeus, 1758)		+	+	+	I-III	Hs, Ss	= <i>Erosaria spurca</i>
* <i>Purpuradusta gracilis notata</i> (Gaskoin, 1849)					+	I	Hs, Ss
<sup>BC</sup> <i>Zonaria pyrum</i> (Gmelin, 1791)				+	+	II	Hs

Table 1. (Continued.)

<b>Cystiscidae</b>					
* <i>Crithe cossinea</i> Cossignani, 1997			5	II	Ss
<i>Gibberula miliaria</i> (Linnaeus, 1758)	+	+		I	Hs, Ss
<i>Gibberula philippii</i> (Monterosato, 1878)			+	I	Ss, Hs
<b>Dialidae</b>					
* <i>Diala semistriata</i> (Philippi, 1849)			+	I	Hs
<b>Drilliidae</b>					
<i>Crassopleura maravignae</i> (Bivona, 1838)	+	+	+	II, III	Ss
<b>Elachisinidae</b>					
<i>Laeviphitus verduini</i> van Aartsen, Bogi & Giusti, 1989	+			VII	Ss
<b>Epitoniidae</b>					
<i>Acirsa subdecussata</i> (Cantraine, 1835)	+	52		III-V	Ss
* <i>Cycloscala hyalina</i> (Sowerby, G. B. II, 1844)			+	I	Ss
<i>Epitonium algerianum</i> (Weinkauff, 1866)	+	+		II-IV	Hs, Ss
* <i>Epitonium aranea</i> Bonfitto, 2018			50	II	Ss
<i>Epitonium celesti</i> (Aradas, 1854)		+		II-V	Ss
<i>Epitonium clathratulum</i> (Kanmacher, 1798)	+	+	+	I	Ss
<i>Epitonium clathrus</i> (Linnaeus, 1758)	36	+	+	I-IV	Hs, Ss
<i>Epitonium muricatum</i> (Risso, 1826)	+	+	+	II-IV	Hs, Ss
<i>Epitonium pulchellum</i> (Bivona & Banardi, 1832)	+	+		III	Hs, Ss
<i>Epitonium turtonis</i> (Turton, 1819)	31	+	+	I-III	Hs, Ss
* <i>Epitonium vaillanti</i> (Jousseume, 1912)			52	II	Ss
<i>Gyroscale commutata</i> (Monterosato, 1877)	+	+	+	I,II	Hs, Ss = <i>Gyroscale lamellosa</i>
<i>Janthina globosa</i> Swainson, 1822			+	I -VII	P
<i>Janthina janthina</i> (Linnaeus, 1758)			+	I	P
<i>Opalia coronata</i> (Philippi & Scacchi, 1840)		+		II,III	Ss = <i>Opalia hellenica</i>
<i>Punctiscala cerigottana</i> (Sturany, 1896)		+		V	Ss
<b>Eratoidae</b>					
* <i>Eratoena sulcifera</i> (Gray, J. E., 1832)			51	I	Ss
<b>Eulimidae</b>					
<i>Aclis ascaris</i> (Turton, 1819)	+			III	Ss
<i>Aclis attenuans</i> Jeffreys, 1883	PS <sup>2</sup>	+		III-VI	Ss
<i>Aclis minor</i> (Brown, 1827)	+	+	+	II,III	Ss
<i>Curveulima devians</i> (Monterosato, 1884)	+			II	Pz
<i>Eulima bilineata</i> Alder, 1848	+	+	+	II-IV	Pz
<i>Eulima glabra</i> (da Costa, 1778)	+	+	+	I-IV	Pz
<i>Ersilia mediterranea</i> (Monterosato, 1869)			+	I	Pz
* <i>Hemiliostraca athenamariae</i> (Mifsud & Ovalis, 2019)			34	I	Pz = <i>Sticteulima athenamariae</i>
* <i>Hemiliostraca clandestina</i> (Mifsud & Ovalis, 2019)			34	I	Pz = <i>Sticteulima clandestina</i>
<i>Melanella alba</i> (da Costa, 1778)		5		II, III	Pz
<i>Melanella boscii</i> (Payraudeau, 1826)		+		I	Pz
<i>Melanella levantina</i> (Oliverio, Buzzurro & Villa, 1994)		+	+	I	Pz
<i>Melanella cf. lubrica</i> (Monterosato, 1890)	52			II	Pz
<i>Melanella monterosatoi</i> (Monterosato, 1890)		52		II	Pz
<i>Melanella polita</i> (Linnaeus, 1758)	+	+	+	I-IV	Pz
<i>Melanella stalioidi</i> (Brusina, 1869)		+	+	I,II	Pz
<i>Nanobalcis nana</i> (Monterosato, 1878)		+		III-IV	Pz

**Table 1.** (Continued.)

<i>Parvioris ibizenca</i> (Nordsieck, 1968)		+	+		I,II	Pz	
<i>Pelseneeria minor</i> Koehler & Vaney, 1908				52	III	Pz	
<i>Sabinella bonifaciae</i> (Nordsieck, 1974)	+				I	Pz	
<i>Sticteulima jeffreysiana</i> (Brusina, 1869)		+	+		II-V	Pz	
* <i>Sticteulima lentiginosa</i> (Adams, A., 1861)				+	I,II	Pz	
<i>Vitreolina antiflexa</i> (Monterosato, 1884)	+				I	Pz	
<i>Vitreolina curva</i> (Monterosato, 1874)	+	+	+		I-IV	Pz	
<i>Vitreolina incurva</i> (Bucquoy, Dautzenberg & Dollfus, 1883)	+	+	+		I,II	Pz	
<i>Vitreolina perminima</i> (Jeffreys, 1883)				+	II	Pz	
<i>Vitreolina philippi</i> (de Rayneval & Ponzi, 1854)	+	+	+		I-IV	Pz	
<b>Fasciolariidae</b>							
<i>Aptyxis syracusana</i> (Linnaeus, 1758)	+	+	+		I-III	Hs, Ss	= <i>Fusinus syracusanus</i>
<i>Pseudofusus alternatus</i> (Buzzurro & Russo, 2007)		+			II,III	Ss	= <i>Fusinus alternatus</i>
<i>Pseudofusus parvulus</i> Monterosato, 1884			+		II	Ss	= <i>Fusinus parvulus</i>
<i>Pseudofusus pulchellus</i> (Philippi, 1840)	+	+	+		I-III	Ss	= <i>Fusinus pulchellus</i>
<i>Pseudofusus rostratus</i> (Olivieri, 1792)	+	+	+		II-VII	Hs, Ss	= <i>Fusinus rostratus</i>
<i>Tarantinaea lignaria</i> (Linnaeus, 1758)		+	+		I	Hs	
<b>Granulinidae</b>							
<i>Granulina boucheti</i> Gofas, 1992				11	II	Ss	
<i>Granulina marginata</i> (Bivona e Bernardi, 1832)	+	+	+		I-III	Hs, Ss	
<i>Granulina melitensis</i> Smriglio, Mariottini & Rufini, 1998				11	II, III	Ss	
<i>Granulina occulta</i> (Monterosato, 1869)		+	+		II-IV	Hs, Ss	
<b>Horaiclavidae</b>							
<i>Haedropleura secalina</i> (Philippi, 1844)			+	+	II	Ss	
<i>Haedropleura septangularis</i> (Montagu, 1803)	+	+	+		I,II	Ss	
<b>Hydrobiidae</b>							
<i>Ecrobia ventrosa</i> (Montagu, 1803)	+	+	+	+	I-IV	Ss	
<i>Hydrobia acuta</i> (Draparnaud, 1805)		+		+	I	Ss	
<i>Peringia ulvae</i> (Pennant, 1777)			+		I	Ss	
<b>Iravadiidae</b>							
<i>Ceratia proxima</i> (Forbes & Hanley, 1850)		+	+		II-VI	Ss	
<i>Hyala vitrea</i> (Montagu, 1803)	+	+	+		I-III	Ss	
<b>Litiopidae</b>							
* <i>Gibborissoia virgata</i> (Philippi, 1849)				+	I	Hs	
<b>Littorinidae</b>							
<i>Echinolittorina punctata</i> (Gmelin, 1791)				+	I	Hs	
<i>Melarhapha neritoides</i> (Linnaeus, 1758)	+	+	+	+	I	Hs	
<b>Mangeliidae</b>							
<i>Bela atticae</i> Nordsieck, 1977				49	I	Ss	
<i>Bela cycladensis</i> (Reeve, 1845)	+	+	+		I-III	Ss	
<i>Bela filioae</i> Öztürk & Ovalis, 2024	49				I	Ss	
<i>Bela fuscata</i> (Deshayes, 1835)	+	49			I, II	Ss	
<i>Bela cf. ginnania</i> (Risso, 1826)				49	I	Ss	
<i>Bela menkhorsti</i> van Aartsen, 1988	+	+	5		I-IV	Ss	
<i>Bela nebula</i> (Montagu, 1803)	+	+	+	+	I-III	Hs, Ss	
<i>Bela plicatilis</i> (Risso, 1826)			49		I, II	Ss	
<i>Bela taprurenensis</i> (Pallary, 1904)	+	+	+		I-III	Ss	
<i>Bela zenetouae</i> (van Aartsen, 1988)	+	+	47		I-III	Ss	

**Table 1.** (Continued.)

<i>Bela zonata</i> (Locard, 1892)		+	+	+	I,II	Ss	
<i>Benthomangelia macra</i> (Watson, 1881)				+	VII	Ss	
<i>Kurtziella serga</i> (Dall, 1881)				52	VI	Ss	
<i>Lyromangelia taeniata</i> (Deshayes, 1835)		+	+	+	I	Hs	= <i>Mangelia taeniata</i>
<i>Mangelia callosa</i> (Nordsieck, 1977)		+	45	+	I-III	Hs, Ss	= <i>Mangelia vanaartseni</i>
<i>Mangelia costata</i> (Pennant, 1777)	31	+	+	+	II-V	Ss	= <i>Mangelia barashi</i>
<i>Mangelia jerbaensis</i> Della Bella & Spada, 1997				57	I, II	Ss	as <i>M. sandrii</i> (45)
<i>Mangelia multilineolata</i> (Deshayes, 1835)		+	+	+	I	Ss	
<i>Mangelia paciniana</i> (Calcara, 1839)		+	+	+	I,II	Hs, Ss	
<i>Mangelia pallaryi</i> (Nordsieck, 1977)				45	II	Ss	
<i>Mangelia pontica</i> Milaschewitsch, 1908	+	+	45	+	I, II	Ss	= <i>Mangelia brusinae</i>
<i>Mangelia scabrida</i> Monterosato, 1890		+	+	+	I,II	Ss	
<i>Mangelia striolata</i> Risso, 1826		+	+	1	I,II	Ss	
<i>Mangelia thapsiae</i> (Oberling, 1970)	22			+	I	Ss	= <i>Mangelia fieldeni</i>
<i>Mangelia unifasciata</i> (Deshayes, 1835)		+	+	+	I-III	Hs, Ss	
<i>Pseudomangelia sicula</i> (Reeve, 1846)		+		+	I,II	Ss	= <i>Mangelia sicula</i>
<i>Pseudomangelia vauquelini</i> (Payraudeau, 1826)		+	+	+	I	Ss	= <i>Mangelia vauquelini</i>
* <i>Pseudorhaphitoma iodolabiata</i> (Hornung & Mermod, 1928)				+	II	Ss	
<i>Pyrgocythara stosciana</i> (Brusina, 1869)		+	+	+	I, II	Ss	= <i>Mangelia stosciana</i>
<i>Smithiella costulata</i> (Risso, 1826)		+	+	+	I-III	Ss	= <i>Mangelia costulata</i>
<i>Sorgenfreispira brachystoma</i> (Philippi, 1844)		+	+	+	I-III	Ss	= <i>Bela brachystoma</i>
<i>Vexiguraleus nuperrimus</i> (Tiberi, 1855)		+	+		I-VII	Ss	= <i>Mangelia nuperrima</i>
<i>Villiersiella attenuata</i> (Montagu, 1803)		+	+	+	I-III	Ss	= <i>Mangelia attenuata</i>
<i>Villiersiella tenuicosta</i> (Brugnone, 1862)			5	45	II, III	Ss	= <i>Mangelia tenuicosta</i>
<b>Marginellidae</b>							
<i>Volvarina mitrella</i> (Risso, 1826)			+	+	I	Ss	
<b>Mitridae</b>							
<i>Episcomitra cornicula</i> (Linnaeus, 1758)			+	+	I	Hs, Ss	= <i>Mitra cornicula</i>
<i>Isara cornea</i> (Lamarck, 1811)			+		II, III	Ss	= <i>Mitra cornea</i>
<b>Mitromorphidae</b>							
<i>Mitromorpha olivoidea</i> (Cantraine, 1835)		+	+	+	I,II	Ss	
<b>Muricidae</b>							
<i>Aspella anceps</i> (Lamarck, 1822)				+	I-III	Hs	
<i>Babelomurex cariniferus</i> (Sowerby, G. B. II, 1834)				+	I	Ss	
<i>Bolinus brandaris</i> (Linnaeus, 1758)		+	+	+	I-IV	Hs, Ss	
<i>Coralliophila meyendorffii</i> (Calcara, 1845)			+	+	I	Ss	
<i>Dermomurex scalaroides</i> (de Blainville, 1829)			+	+	I-III	Hs	
* <i>Ergalatax junionae</i> Houart, 2008			+	+	I,II	Hs, Ss	
<i>Hadriana craticulata</i> Bucquoy, Dautzenberg & Dollfus, 1882		+	+	+	I-IV	Ss	
<i>Hexaplex pecchiolianus</i> (d'Ancona, 1871)				+	I-III	Hs, Ss	
<i>Hexaplex trunculus</i> (Linnaeus, 1758)		+	+	+	I-IV	Hs, Ss	
<i>Hirtomurex squamosus</i> (Bivona e Bernardi, 1838)		+	+	+	II-VI	Hs, Ss	= <i>Coralliophila squamosa</i>
<i>Murexsul aradasii</i> (Monterosato, 1883)				+	I-IV	Hs	= <i>Muricopsis aradasii</i>
<i>Murexsul cevikeri</i> (Houart, 2000)			+	+	I,II	Hs, Ss	= <i>Muricopsis cevikeri</i>
<i>Muricopsis cristata</i> (Brocchi, 1814)		+	+	+	I-IV	Hs	
<i>Ocenebra edwardsii</i> (Payraudeau, 1826)		+	+	+	I	Hs	= <i>Ocenebrina edwardsii</i>
<i>Ocenebra erinaceus</i> (Linnaeus, 1758)		+	+	+	I-IV	Hs, Ss	

**Table 1.** (Continued.)

<i>Ocenebrina aciculata</i> (Lamarck, 1822)		+	+	+	I-IV	Hs, Ss	
<i>Orania fusulus</i> (Brocchi, 1814)				+	I-IV	Ss	
* <i>Rapana venosa</i> (Valenciennes, 1846)	+	+	+		I	Hs, Ss	
<i>Stramonita haemastoma</i> (Linnaeus, 1767)			+	+	I,II	Hs	
* <i>Indothais lacera</i> (Born, 1778)				+	I,II	Ss	= <i>Thaisella lacera</i>
<i>Trophonopsis breviata</i> (Jeffreys, 1882)	36	+	+		I-IV	Ss	
<i>Trophonopsis muricata</i> (Montagu, 1803)	+	+	+		II-V	Ss	
<i>Typhinellus labiatus</i> (de Cristofori & Jan, 1832)		+	+	+	I-III	Hs, Ss	
<b>Nassariidae</b>							
<i>Nassarius circumcinctus</i> (Adams, A., 1852)				+	I	Ss	
<i>Tritia neritea</i> (Linnaeus, 1758)	+	+	+		I,II	Hs, Ss	= <i>Cyclope neritea</i>
<i>Tritia pellucida</i> (Risso, 1826)	+	+	+	+	I,II	Ss	= <i>Cyclope pellucida</i>
<i>Tritia corniculum</i> (Olivieri, 1792)		+	+	+	I	Ss	= <i>Nassarius corniculum</i>
<i>Tritia cuvierii</i> (Payraudeau, 1826)		+	+	+	I,II	Hs, Ss	= <i>Nassarius cuvierii</i>
<i>Tritia gibbosula</i> (Linnaeus, 1758)			+	+	I	Ss	= <i>Nassarius gibbosulus</i>
<i>Tritia incrassata</i> (Strøm, 1768)	+	+	+	+	I-III	Hs, Ss	= <i>Nassarius incrassatus</i>
<i>Tritia lima</i> (Dillwyn, 1817)			+	+	III,IV	Hs, Ss	= <i>Nassarius lima</i>
<i>Tritia louisii</i> (Pallary, 1912)				+	I	Ss	= <i>Nassarius louisii</i>
<i>Tritia mutabilis</i> (Linnaeus, 1758)			+	+	I,II	Ss	= <i>Nassarius mutabilis</i>
<i>Tritia nitida</i> (Jeffreys, 1867)		+		+	I-III	Hs, Ss	= <i>Nassarius nitidus</i>
<i>Tritia pygmaea</i> (Lamarck, 1822)		+	+	+	I-III	Hs, Ss	= <i>Nassarius pygmaeus</i>
<i>Tritia reticulata</i> (Linnaeus, 1758)	+	+	+	+	I-III	Hs, Ss	= <i>Nassarius reticulatus</i>
<i>Tritia turulosa</i> (Risso, 1826)			+		III	Ss	= <i>Nassarius turulosus</i>
<b>Naticidae</b>							
* <i>Eunaticina papilla</i> Gmelin, 1791				+	I	Ss	
<i>Euspira fusca</i> (de Blainville, 1825)	+	+	+		III-VII	Ss	
<i>Euspira guilleminii</i> (Payraudeau, 1826)	+	+	+	+	I,II	Ss	
<i>Euspira macilenta</i> (Philippi, 1844)		+			II	Ss	
<i>Euspira nitida</i> (Donovan, 1804)	+	+	+	+	II-V	Ss	
<i>Naticarius hebraeus</i> (Martyn, 1786)			+	+	I,II	Hs, Ss	= <i>Natica hebraea</i>
<i>Naticarius stercusmuscarum</i> (Gmelin, 1791)	+	+	+	+	II-V	Ss	= <i>Natica stercusmuscarum</i>
<i>Neverita josephina</i> Risso, 1826		+	+	+	I-III	Ss	
<i>Notocochlis dillwynii</i> (Payraudeau, 1826)		+	+	+	I-III	Hs, Ss	
<i>Payraudeautia intricata</i> (Donovan, 1804)	+	+	+		I-IV	Hs, Ss	= <i>Euspira intricata</i>
<i>Tectonatica sagraiana</i> (d'Orbigny, 1842)	+	+	+		II	Ss	
<b>Ovulidae</b>							
<i>Pseudosimnia adriatica</i> (Sowerby I, G. B., 1828)	+	+			II,III	Hs	
<i>Pseudosimnia carnea</i> (Poiret, 1789)	+				III	Hs	
<i>Simnia aperta</i> (Sowerby II, G. B., 1849)			+		II	Hs	= <i>Xandarovula aperta</i>
<i>Simnia illyrica</i> (Schilder, 1927)			+		II	Hs	
<i>Simnia spelta</i> (Linnaeus, 1758)			+		II	Hs	
<b>Pisaniidae</b>							
<i>Aplus coccineus</i> (Monterosato, 1884)		+	+		I,II	Hs, Ss	= <i>Pollia scabra</i>
<i>Aplus dorbignyi</i> (Payraudeau, 1826)	+	+	+		I,II	Hs, Ss	= <i>Pollia dorbignyi</i>
<i>Aplus scacchianus</i> (Philippi, 1844)			+	+	I	Hs, Ss	= <i>Pollia scacchiana</i>
<i>Enginella leucozona</i> (Philippi, 1844)	+	+	+		I,II	Hs, Ss	= <i>Engina leucozona</i>
<i>Pisania striata</i> (Gmelin, 1791)	+	+	+		I	Hs, Ss	
<b>Planaxidae</b>							
<i>Fossarus ambiguus</i> (Linnaeus, 1758)		+	+		I	Hs, Ss	



Table 1. (Continued.)

**Potamididae**

*Pirenella conica* (Blainville, 1829) + + I Ss =*Potamides conicus*

**Pterotracheidae**

*Firoloida desmarestia* Lesueur, 1817 + + I-III P  
*Pterotrachea coronata* Forsskål, 1775 + + I-III P  
*Pterotrachea hippocampus* Philippi, 1836 + + I-IV P

**Ranellidae**

<sup>BC</sup>*Ranella olearium* (Linnaeus, 1758) + V Ss

**Raphitomidae**

*Clathromangelia granum* (Philippi, 1844) + + I-IV Ss  
*Clathromangelia loiselierii* Oberling, 1970 5 II Ss  
*Clathromangelia strigilata* Pallary, 1904 + II,III Ss  
*Cyrellia aequalis* (Jeffreys, 1867) + + 5 II,III Ss =*Raphitoma aequalis*  
*Cyrellia ephesina* (Pusateri, Giannuzzi-Savelli & Stahlschmidt, 2017) 54 II, III Ss =*Raphitoma ephesina*  
*Cyrellia linearis* (Montagu, 1803) 48 + + I-III Ss =*Raphitoma linearis*  
*Leufroyia concinna* (Scacchi, 1836) + + + I-III Ss =*Raphitoma concinna*  
*Leufroyia leufroyi* (Michaud, 1828) + + 12 I-III Ss =*Raphitoma leufroyi*  
*Raphitoma alternans* (Monterosato, 1884) + + II Ss  
*Raphitoma atropurpurea* (Locard & Caziot, 1900) + II, III Ss  
*Raphitoma bicolor* (Risso, 1826) 48 5 23 I, II Ss  
*Raphitoma brunneofasciata* Pusateri, Giannuzzi-Savelli & Oliverio, 2013 48 II Ss  
*Raphitoma contigua* (Monterosato, 1884) 48 28 I-IV Ss from the Aegean Sea as *R. laviae* (48)  
*Raphitoma corbis* (Potiez & Michaud, 1938) 53 I-III Ss  
*Raphitoma cordieri* (Payraudeau, 1826) + II Ss  
*Raphitoma densa* (Monterosato, 1884) 48 48 I-III Ss  
*Raphitoma digiulioi* Pusateri & Giannuzzi Savelli, 2017 48 II Ss  
*Raphitoma echinata* (Brocchi, 1814) + + + I-III Hs, Ss  
*Raphitoma farolita* (Nordsieck, 1977) 23 II Ss  
*Raphitoma hispidella* (Pusateri & Giannuzzi-Savelli, 2019) 48 24 II-III Ss  
*Raphitoma hystrix* Bellardi, 1847 + + II Ss  
*Raphitoma horrida* (Monterosato, 1884) 48 + I-III Ss  
*Raphitoma laviae* (Philippi, 1844) 23 12 I-III Ss  
*Raphitoma lineolata* (Bucquoy, Dautzenberg & Dollfus, 1883) + + I, II Ss  
*Raphitoma locardi* Pusateri, Giannuzzi-Savelli & Oliverio, 2013 23 I Ss  
*Raphitoma mirabilis* (Pallary, 1904) + + ? ?  
*Raphitoma papillosa* (Pallary, 1904) + + II-III Ss  
*Raphitoma philberti* (Michaud, 1829) + + I-III Ss  
*Raphitoma pruinosa* (Pallary, 1906) + ? ?  
*Raphitoma pupoides* (Monterosato, 1884) + II,III Ss  
*Raphitoma purpurea* (Montagu, 1803) + + + I-III Hs, Ss  
*Raphitoma sophiae* Kontadakis & Polyzoulis, 2019 48 II,III Ss  
*Raphitoma smriglioi* Pusateri & Giannuzzi-Savelli, 2013 + + II Ss  
*Raphitoma spadiana* Pusateri & Giannuzzi-Savelli, 2012 48 21 I- III Ss  
*Teretia teres* (Reeve, 1844) + + II-V Ss

**Rissoidae**

**Table 1.** (Continued.)

<i>Alvania amatii</i> Oliverio, 1986			+	+	I,II	Ss
<i>Alvania aspera</i> (Philippi, 1844)			+	+	I	Hs
<i>Alvania beanii</i> (Hanley, 1844)		+	+	8	II-VII	Hs, Ss
<i>Alvania bozcaadensis</i> Tisselli & Giunchi, 2013			+	+	II	Ss
<i>Alvania campanii</i> Tisselli & Giunchi, 2013			+		II	Ss
<i>Alvania cancellata</i> (da Costa, 1778)		+	+	+	I-VII	Hs, Ss
<i>Alvania carinata</i> (da Costa, 1778)			+	+	I,II	Ss
<i>Alvania cimex</i> (Linnaeus, 1758)		+	+	+	I-III	Hs, Ss
<i>Alvania cimicoides</i> (Forbes, 1844)		+	+	+	II-VII	Hs, Ss
<i>Alvania colossophilus</i> Oberling, 1970			+	+	I,II	Ss
<i>Alvania datchaensis</i> Amati & Oliverio, 1987			+	+	I,II	Hs, Ss
<i>Alvania discors</i> (Brown, 1818)		+	+	+	I	Hs, Ss
<i>Alvania dorbignyi</i> (Audouin, 1826)			+	+	I	Ss
<i>Alvania fractospira</i> Oberling, 1970				+	I	Hs, Ss
<i>Alvania geryonia</i> (Nardo, 1847)		+	+	+	I-III	Hs, Ss
<i>Alvania hispidula</i> (Monterosato, 1884)		+	9		II, III	Ss
<i>Alvania lactea</i> (Michaud, 1830)		+	+	+	I,II	Hs, Ss
<i>Alvania lanciae</i> (Calcara, 1845)		+	+	+	I-IV	Hs, Ss
<i>Alvania lineata</i> Risso, 1826		+	+	+	I,II	Hs, Ss
<i>Alvania mamillata</i> Risso, 1826		7	+	+	I,II	Hs, Ss
<i>Alvania marmarisensis</i> Bitlis & Öztürk, 2017				9	III	Ss
<i>Alvania punctura</i> (Montagu, 1803)		+	+		II-VI	Ss
<i>Alvania rudis</i> (Philippi, 1844)		+	+		I	Ss
<i>Alvania scabra</i> (Philippi, 1844)			+	+	I	Ss
<i>Alvania schwartziana</i> Brusina, 1866				+	?	?
<i>Alvania testae</i> (Aradas & Maggiore, 1884)		+	+	+	III-VI	Ss
<i>Alvania zetlandica</i> (Montagu, 1815)			+		III-V	Ss
<i>Benthonella tenella</i> (Jeffreys, 1869)		21		+	VII	Ss
<i>Botryphallus epidauricus</i> (Brusina, 1866)				+	I	Ss
<i>Crisilla semistriata</i> (Montagu, 1808)		+	+	+	I	Hs, Ss
<i>Manzonia crassa</i> (Kanmacher, 1798)		31	+	+	I,II	Hs, Ss
<i>Obtusella intersecta</i> (Wood, S. V., 1857)		+	+		II-IV	Ss
<i>Obtusella macilenta</i> (Monterosato, 1880)			+	7	III, IV	Ss
<i>Pusillina inconspicua</i> (Alder, 1844)		+	+	+	I-VI	Ss
<i>Pusillina lineolata</i> (Michaud, 1830)		+	+	+	I-III	Hs, Ss
<i>Pusillina marginata</i> (Michaud, 1830)		+	+	+	I,II	Hs, Ss
<i>Pusillina munda</i> (Monterosato, 1884)			+		I,II	Ss
<i>Pusillina philippi</i> (Aradas & Maggiore, 1844)		+	+	+	I	Ss
<i>Pusillina radiata</i> (Philippi, 1836)		+	+	+	I,II	Hs, Ss
<i>Pusillina sarsii</i> (Lovén, 1846)		+			II,III	Ss
<i>Rissoa auriformis</i> Pallary, 1904			+	+	I	Ss
<i>Rissoa auriscalpium</i> (Linnaeus, 1758)		+	+	+	I,II	Ss
<i>Rissoa decorata</i> Philippi, 1846			+		I	Hs
<i>Rissoa guerinii</i> Récluz, 1843		+	+	47	I,II	Hs, Ss
<i>Rissoa lia</i> (Monterosato, 1884)			+	+	I	Hs, Ss
<i>Rissoa membranacea</i> (Adams, J., 1800)		+	+	+	I,II	Hs, Ss
<i>Rissoa monodonta</i> Philippi, 1836			+	+	I,II	Ss
<i>Rissoa parva</i> (da Costa, 1778)		+	+	+	I,II	Hs, Ss
<i>Rissoa rodhensis</i> Verduin, 1985			+	+	I	Hs, Ss

**Table 1.** (Continued.)

<i>Rissoa scurra</i> (Monterosato, 1917)				+	+	I	Ss				
<i>Rissoa similis</i> Scacchi, 1836				+	+	I,II	Hs, Ss				
<i>Rissoa splendida</i> Eichwald, 1830	+	+		+	+	I,II	Hs, Ss				
<i>Rissoa variabilis</i> (Megerle von Mühlfeldt, 1824)				+	+	I,II	Hs, Ss				
<i>Rissoa ventricosa</i> Desmarest, 1814				+	+	I,II	Hs, Ss				
<i>Rissoa violacea</i> Desmarest, 1814				+	+	I,II	Ss				
<i>Setia amabilis</i> (Locard, 1886)				52		I	Hs				
<i>Setia ambigua</i> (Brugnone, 1873)				+		I, II	Hs				
<i>Setia fusca</i> (Philippi, 1841)				+	+	I	Hs, Ss				
<i>Setia pulcherrima</i> (Jeffreys, 1848)				52		I	Hs				
<i>Setia turriculata</i> Monterosato, 1884				+	+	I	Hs, Ss				
<i>Setia valvatoides</i> (Milaschewitsch, 1909)	+	+				I, II	Hs, Ss				
* <i>Rissoina ambigua</i> (Gould, 1849)						II	Ss				
* <i>Rissoina bertholleti</i> Issel, 1869						I	Ss				
<i>Rissoina bruguieri</i> (Payraudeau, 1826)				+	+	I,II	Hs, Ss				
<b>Rissoinidae</b>											
* <i>Phosinella digera</i> (Laseron, 1956)						41	I	Ss			
<b>Scaliolidae</b>											
* <i>Finella pupoides</i> Adams, A., 1860						+	+	I,II	Ss		
<b>Seguenzioidea (temporary)</b>											
<i>Akritogyra conspicua</i> (Monterosato, 1880)				21				VI, VII	Ss		
<b>Siliquariidae</b>											
<i>Tenagodus obtusus</i> (Schumacher, 1817)				+	+	+		I-III	Hs, Ss		
<b>Skeneopsidae</b>											
<i>Skeneopsis planorbis</i> (Fabricius, O., 1780)								+	I	Ss	
<b>Strombidae</b>											
* <i>Conomurex persicus</i> (Swainson, 1821)						+	+		I,II	Hs, Ss	
<b>Tonnidae</b>											
<sup>BC</sup> <i>Tonna galea</i> (Linnaeus, 1758)						+	+		II-V	Ss	
<b>Tornidae</b>											
<i>Tornus mienisi</i> van Aartsen, Carrozza & Menkhorst, 1998								+	I	Ss	
<i>Tornus subcarinatus</i> (Montagu, 1803)	19	+	+	+	+				I,II	Ss	
<b>Triphoridae</b>											
* <i>Coriophora lessepsiana</i> Albano, Bakker & Sabelli, 2021								43	I	Ss	
<i>Marshallora adversa</i> (Montagu, 1803)				+	+	+			I-IV	Hs, Ss	
* <i>Metaxia bacillum</i> (Issel, 1869)								+	I	Hs, Ss	
<i>Metaxia metaxa</i> (Delle Chiage, 1828)				+	+	+			I-III	Hs, Ss	
<i>Monophorus erythrosoma</i> (Bouchet & Guillemot, 1978)								+	+	I,II	Ss
<i>Monophorus perversus</i> (Linnaeus, 1758)	+	+		+	+				I-III	Hs, Ss	
<i>Monophorus thiriota</i> Bouchet, 1985									+	II-IV	Ss
<i>Similiphora similior</i> (Bouchet & Guillemot, 1978)								+	47	II	Ss
* <i>Viriola cf. bayani</i> Jousseaume, 1884								58		II	Ss
<b>Triviidae</b>											
<i>Erato voluta</i> (Montagu, 1803)				+	+				II-IV	Ss	
<i>Trivia arctica</i> (Pulteney, 1799)									+	II-IV	Ss
<i>Trivia levantina</i> Smriglio, Mariottini & Buzzurro, 1998				+	+	+				I,II	Hs, Ss
<i>Trivia monacha</i> (da Costa, 1778)				+	+					I-IV	Hs, Ss

Table 1. (Continued.)

<i>Trivia multilirata</i> (Sowerby II, G. B., 1870)				+		III	Ss		
<b>Truncatellidae</b>									
<i>Truncatella subcylindrica</i> (Linnaeus, 1767)		+	+	+		I,II	Hs, Ss		
<b>Tudicidae</b>									
<i>Euthria cornea</i> (Linnaeus, 1758)		+	+	+		I-III	Hs, Ss		
<b>Turritellidae</b>									
<i>Turritella turbona</i> Monterosato, 1877		+	+	+		II-IV	Hs, Ss		
<i>Turritellinella tricarinata</i> (Brocchi, 1814)	+	+	+	+		I-III	Hs, Ss	= <i>Turritella communis</i>	
<b>Velutinidae</b>									
<i>Lamellaria latens</i> (Müller, O. F., 1776)				+		I-III	Hs		
<i>Marsenia perspicua</i> (Linnaeus, 1758)				+	+	I	Ss	= <i>Lamellaria perspicua</i>	
<b>Vermetidae</b>									
<sup>BC</sup> <i>Dendropoma cristatum</i> (Biondi-Giunti, 1859)		+	+	+		I	Hs	= <i>Dendropoma petraeum</i>	
<i>Petaloconchus glomeratus</i> (Linnaeus, 1758)		+	+	+		I,II	Hs		
<i>Thylacodes arenarius</i> (Linnaeus, 1758)		+	+	+		I-IV	Hs		
<i>Thylaeodus rugulosus</i> (Monterosato, 1878)				+	+	I-III	Hs		
<i>Thylaeodus semisurrectus</i> (Bivona & Bernardi, 1832)		+			+	II	Ss		
<i>Vermetus granulatus</i> (Gravenhorst, 1831)		+	+	+		I	Hs		
<i>Vermetus triquetrus</i> Bivona & Bernardi, 1832		+	+	+		I	Hs		
<b>Vitrinellidae</b>									
* <i>Circulus novemcarinatus</i> (Melvil, 1906)					51	I			
* <i>Circulus octoliratus</i> (Carpenter, 1856)					41	I	Ss		
<i>Circulus striatus</i> (Philippi, 1836)		+	+	+		I, II	Ss		
<b>Zebinidae</b>									
* <i>Pandalosia subfirmata</i> (O. Boettger, 1887)					59	I	Ss		
* <i>Pandalosia ephamilla</i> (R. B. Watson, 1886)					60	I	Ss		
* <i>Stosicia annulata</i> (Dunker, 1860)					50	II	Ss		
<b>Subclass Heterobranchia</b>									
<b>Acochliidiidae</b>									
<i>Microhedyle glandulifera</i> (Kowalevsky, 1901)		30				II	Ss	= <i>Hedyle glandulifera</i>	
<b>Acteonidae</b>									
<i>Acteon monterosatoi</i> Dautzenberg, 1889					+	III-VII	Ss		
<i>Acteon tornatilis</i> (Linnaeus, 1758)	+	+	+	+		I-V	Hs, Ss		
<i>Crenilabium exile</i> (Jeffreys, 1870)		21			+	V-VII	Ss		
<i>Japonactaeon pusillus</i> (MacGillivray, 1843)					+	III-VII	Ss		
<b>Aeolidiidae</b>									
<i>Aeolidiella alderi</i> (Cocks, 1852)		+				II	Ss		
* <i>Baeolidia moebii</i> Bergh, 1888					+	II	Ss		
<i>Limenandra nodosa</i> Haefelfinger & Stamm, 1958					+	I	Hs		
<i>Spurilla neapolitana</i> (Delle Chiage, 1841)					+	I	Ss		
<b>Aglajidae</b>									
<i>Aglaja tricolorata</i> Renier, 1807		4	+	+		I	Hs		
* <i>Biuve fulvipunctata</i> (Baba, 1938)			+	+		I,II	Hs, Ss	= <i>Chelidonura fulvipunctata</i>	
<i>Philinopsis depicta</i> (Renier, 1807)			+	+		I,II	Ss		
<b>Akeridae</b>									
<i>Akera bullata</i> Müller, O.F., 1776		+	+			I-III	Ss		
<b>Alacuppidae</b>									
<i>Roxania monterosatoi</i> Dautzenberg & Fischer, H., 1896		14				V-VII	Ss		

Table 1. (Continued.)

<i>Roxania utriculus</i> (Brocchi, 1814)	+	+		III-VII	Ss	
<b>Amathinidae</b>						
* <i>Amathina tricarinata</i> (Linnaeus, 1767)			+	I,II	Hs	
<i>Carinorbis clathrata</i> (Philippi, 1844)	+	+	+	II-IV	Hs	= <i>Clathrella clathrata</i>
* <i>Leucotina natalensis</i> Smith, E.A., 1910		46	+	I,II	Pz	
* <i>Monotygmia fulva</i> (Adams, A., 1853)		+	5	II	Pz	
* <i>Monotygmia lauta</i> (Adams, A., 1853)		47	+	I,II	Pz	
<b>Aplysiidae</b>						
<i>Aplysia dactylomela</i> Rang, 1828			+	I	Hs	
<i>Aplysia depilans</i> Gmelin, 1791	+	+	+	I,II	Hs, Ss	
<i>Aplysia fasciata</i> (Poirer, 1789)			+	I	Hs	
<i>Aplysia parvula</i> Mörch, 1863	+	+	+	I	Hs	
<i>Aplysia punctata</i> (Cuvier, 1803)	+	+	+	I,II	Hs	
<i>Bursatella leachii</i> Blainville, 1817	44	+	+	I,II	Ss	
<i>Notarchus punctatus</i> Philippi, 1836			+	I	Hs	
<i>Petalifera petalifera</i> Rang, 1828			+	I	Hs	
* <i>Syphonota geographica</i> (Adams, A. & Reeve, 1850)			+	I,II	Hs	
<b>Architectonicidae</b>						
<i>Discotectonica discus</i> (Philippi, 1844)			+	IV-VI	Ss	
<i>Heliacus fallaciosus</i> (Tiberi, 1872)	+			IV,V	Ss	
<i>Pseudotorinia architae</i> (Costa, O.G., 1841)	+	+		II-VI	Ss	
<i>Spirolaxis clenchi</i> Jaume & Borro, 1946			52	VI	Ss	
<b>Arminidae</b>						
<i>Armina maculata</i> Rafinesque, 1814			+	II	Ss	
<i>Armina neapolitana</i> (Delle Chiaje, 1824)	63			III	Ss	
<i>Armina tigrina</i> Rafinesque, 1814	+			III	Ss	
<b>Bullidae</b>						
* <i>Bulla arabica</i> Malaquias & Reid, 2008			+	II	Ss	
<i>Bulla striata</i> Brugière, 1792	4	+	+	I,II	Ss	
<b>Calycidorididae</b>						
<i>Diaphorodoris luteocincta</i> (Sars, M., 1870)			+	I	Hs	
<i>Diaphorodoris papillata</i> Portmann & Sandmeier, 1960			+	I	Hs	
<b>Cavoliniidae</b>						
<i>Cavolinia gibbosa</i> (d'Orbigny, 1835)			+	I-VII	P	
<i>Cavolinia inflexa</i> (Lesueur, 1813)			+	I-VII	P	
<i>Cavolinia tridentata</i> (Forsskål, 1775)	+		+	I,II	P	
<i>Cavolinia uncinata</i> (d'Orbigny, 1835)			+	I-VII	P	
<b>Chromodorididae</b>						
* <i>Chromodoris quadricolor</i> (Rüppell & Leuckart, 1830)			+	II	Hs	
<i>Felimare fontandraui</i> (Pruvot-Fol, 1951)			+	I	Hs	
<i>Felimare orsinii</i> (Vérany, 1846)	+	+	+	I,II	Hs	
<i>Felimare picta</i> (Philippi, 1836)			+	I,II	Hs	
<i>Felimare tricolor</i> (Cantraine, 1835)	+	+	+	I,II	Hs	
<i>Felimare villafranca</i> (Risso, 1818)	+	+	+	I,II	Hs	
<i>Felimida elegantula</i> (Philippi, 1844)			+	II	Hs	= <i>Chromodoris elegantula</i>
<i>Felimida krohni</i> (Vérany, 1846)			+	I	Hs	
<i>Felimida luteorosea</i> (Rapp, 1827)			+	I, II	Hs	

Table 1. (Continued.)

<i>Felimida purpurea</i> (Risso in Guérin, 1831)	+	+	+	I,II	Hs	
* <i>Goniobranchus annulatus</i> (Eliot, 1904)		64	+	I	Hs	
* <i>Goniobranchus obsoletus</i> (Rüppell & Leuckart, 1830)			6	I	Hs	
* <i>Hypselodoris infucata</i> (Rüppell & Leuckart, 1830)			+	I,II	Hs	
<b>Cimidae</b>						
<i>Cima cylindrica</i> (Jeffreys, 1856)			42	I	Ss	
<i>Cima minima</i> (Jeffreys, 1858)			42	I	Ss	
<i>Graphis albida</i> (Kanmacher, 1798)		+	+	I-IV	Ss	
<i>Graphis barashi</i> van Aartsen, 2002			+	I	Ss	
<b>Cliidae</b>						
<i>Clio pyramidata</i> Linnaeus, 1767		+	+	I-VII	P	
<b>Cornirostridae</b>						
<i>Tomura depressa</i> (Granata-Grillo, 1877)		+	+	I,II	Ss	
<b>Coryphellidae</b>						
<i>Coryphella lineata</i> (Lovén, 1846)	+			II	Hs	= <i>Flabellina lineata</i>
<b>Creseidae</b>						
<i>Creseis acicula</i> Rang, 1828	+	+	+	II	P	
<i>Creseis virgula</i> Rang, 1828	+		+	II	P	
<i>Styliola subula</i> (Quoy & Gaimard, 1827)			+	I-VII	P	
<b>Cylichnidae</b>						
<i>Cylichna cylindracea</i> (Pennant, 1777)	+	+	+	II-VI	Ss	
<b>Cymbuliidae</b>						
<i>Corolla spectabilis</i> Dall, 1871			+	I	P	
<i>Cymbulia peronii</i> Blainville, 1818		+		III	P	
<b>Dendrodorididae</b>						
<i>Dendrodoris grandiflora</i> (Rapp, 1827)	4	+	+	I,II	Hs, Ss	
<i>Dendrodoris limbata</i> (Cuvier, 1804)	+	+	+	II,III	Hs, Ss	
<i>Doriopsilla areolata</i> Bergh, 1880		+		I	Hs	
<b>Diaphanidae</b>						
<i>Diaphana minuta</i> Brown, 1827	4			I-IV	Hs, Ss	
<b>Discodorididae</b>						
<i>Jorunna tomentosa</i> (Cuvier, 1804)		+		I,II	Hs	
<i>Paradoris indecora</i> (Bergh, 1881)		+	+	I	Hs	
<i>Peltodoris atromaculata</i> Bergh, 1880	+	+	+	I,II	Hs, Ss	
<i>Platydorhis argo</i> (Linnaeus, 1767)		+	+	I,II	Hs	
<i>Rostanga rubra</i> (Risso, 1818)	+	+	+	I,II	Hs	
<i>Taringa armata</i> Swennen, 1961		+	+	I	Ss	
<i>Tayuva lilacina</i> (Gould, 1852)		+	+	I	Hs	
<i>Thordisa filix</i> Pruvot-Fol, 1951	+			II	Hs	
<b>Dorididae</b>						
<i>Doris bertheloti</i> (d'Orbigny, 1839)		+	+	I	Hs	
<i>Doris pseudoargus</i> Rapp, 1827	4			I,II	Hs	
<i>Doris verrucosa</i> Linnaeus, 1758	4			I,II	Hs	
<b>Dotidae</b>						
<i>Doto coronata</i> (Gmelin, 1791)	+		47	I	Ss	
<b>Ellobiidae</b>						
<i>Leucophytia bidentata</i> (Montagu, 1808)	+	+	+	I	Ss	= <i>Auriculinella bidentata</i>
<i>Myosotella myosotis</i> (Draparnaud, 1801)	+	+	+	I,II	Hs, Ss	

Table 1. (Continued.)

<i>Ovatella firminii</i> (Payraudeau, 1826)		+	+	I	Ss	
<b>Eubranchiidae</b>						
<i>Amphorina farrani</i> (Alder & Hancock, 1844)			+		Hs	= <i>Eubranchus farrani</i>
<b>Facelinidae</b>						
<i>Caloria elegans</i> (Alder & Hancock, 1845)			+	+	I,II	Hs
<i>Cratena peregrina</i> (Gmelin, 1791)		+	+	+	I,II	Hs
<i>Dicata odhneri</i> Schmekel, 1967			+		I	Hs
<i>Facelina annulicornis</i> (Chamisso & Eysenhardt, 1821)		+	+	29	I, II	Hs
<i>Facelina auriculata</i> (Müller, 1776)			+		I,II	Hs
<i>Facelina bostoniensis</i> (Couthouy, 1838)		+			II	Hs
<i>Facelina dubia</i> Pruvot-Fol, 1948		+			II	Hs
<i>Facelina fusca</i> Schmekel, 1966			+		I	Ss
<i>Facelina rubrovittata</i> (Costa A., 1866)			+	+	I,II	Hs
<i>Favorinus branchialis</i> (Rathke, 1806)				+	II	Hs
<i>Pruvotfolia pselliotes</i> (Labbé, 1923)		+		29	I,II	Hs
<b>Flabellinidae</b>						
<i>Calmella cavolini</i> (Vérany, 1846)		+	+	+	I,II	Hs
* <i>Coryphellina rubrolineata</i> O'Donoghue, 1929		64	+	+	I,II	Hs, Ss = <i>Flabellina rubrolineata</i>
<i>Edmundsella pedata</i> (Montagu, 1816)		+	+	+	I,II	Hs = <i>Flabellina pedata</i>
<i>Flabellina affinis</i> (Gmelin, 1791)		+	+	+	I,II	Hs, Ss
<i>Paraflabellina gabinieri</i> (Vicente, 1975)			+	+	I	Hs = <i>Piseinotecus gabinieri</i>
<i>Paraflabellina ischitana</i> (Hirano & Thompson, 1990)		+	+	+	I,II	Hs = <i>Flabellina ischitana</i>
<b>Gastropteridae</b>						
<i>Gastropteron rubrum</i> (Rafinesque, 1814)		+	+	+	I-III	Ss
<b>Goniodorididae</b>						
<i>Trapania lineata</i> Haefelfinger, 1960			+	+	I	Hs
<i>Trapania maculata</i> Haefelfinger, 1960		+	+		I,II	Hs, Ss
<b>Haminoeidae</b>						
* <i>Atys angustatus</i> Smith, E. A., 1872				+, 33	II	Ss given as <i>A. macandrewii</i> (47)
<i>Haminoea hydatis</i> (Linnaeus, 1758)		+	+	+	II	Hs, Ss
<i>Haminoea navicula</i> (da Costa, 1778)		+	+		I,II	Ss
<i>Haminoea orbignyana</i> (Férussac, 1822)		4			I	Hs,Ss
* <i>Lamprohaminoea ovalis</i> (Pease, 1868)			+	+	I-III	Hs = <i>Haminoea cyanomarginata</i>
<i>Roxaniella jeffreysi</i> (Weinkauff, 1866)		+	+	+	I,II	Ss = <i>Atys jeffreysi</i>
<i>Weinkauffia turgidula</i> (Forbes, 1844)		+	+	+	I,II	Ss
<i>Weinkauffia macandrewii</i> (Smith, 1872)			PS <sup>3</sup>	PS <sup>4,6,7</sup>	I,II	Ss
<b>Hedylopsidae</b>						
<i>Hedylopsis spiculifera</i> (Kowalevsky, 1901)		+			I,II	Ss
<b>Heliconoididae</b>						
<i>Heliconoides inflatus</i> (d'Orbigny, A., 1835)			+	+	I-IV	P
<b>Hermaeidae</b>						
<i>Cyerce cristallina</i> (Trinchese, 1881)				+	I	Hs
<b>Hyalocylidae</b>						
<i>Hyalocylis striata</i> (Rang, 1828)			+	+	I -VII	P
<b>Hyalogyrinidae</b>						
<i>Xenoskenea pellucida</i> (Monterosato, 1874)			+	+	I,II	Ss
<b>Janolidae</b>						
<i>Antiopella cristata</i> (Delle Chiaje, 1841)		+	+	+	I,II	Hs = <i>Janolus cristatus</i>

Table 1. (Continued.)

<b>Laonidae</b>					
<i>Laona quadrata</i> (Wood, 1839)				+	IV Ss = <i>Philine quadrata</i>
<b>Limacinidae</b>					
<i>Limacina retroversa</i> (Fleming, 1823)				+	I P
<i>Limacina trochiformis</i> (d'Orbigny, 1836)				+	+ I-IV P
<b>Limapontiidae</b>					
<i>Calliopaea bellula</i> d'Orbigny, 1837				17	II Hs
<i>Limapontia capitata</i> (Müller, O. F., 1774)				+	+ I Ss
<i>Placida cremoniana</i> (Trinchese, 1892)				62	I Hs
<b>Mathildidae</b>					
<i>Mathilda gemmulata</i> Semper, 1865				+	+ I-IV Ss
<b>Mnestiidae</b>					
* <i>Mnestia girardi</i> (Audouin, 1826)				+	+ I Hs = <i>Cylichnina girardi</i>
<b>Myrrhinidae</b>					
<i>Nemesignis banyulensis</i> (Portmann & Sandmeier, 1960)				+	+ + I,II Hs = <i>Dondice banyulensis</i>
<b>Murchisonellidae</b>					
<i>Ebala gradata</i> (Monterosato, 1878)				+	+ I,II Ss
<i>Ebala nitidissima</i> (Montagu, 1803)				+	+ + I-IV Ss
<i>Ebala pointeli</i> (de Folin, 1868)				+	+ + I-III Hs, Ss
<i>Ebala striatula</i> (Jeffreys, 1856)					+ + I-III Ss
<i>Murchisonella mediterranea</i> Peñas & Rolán, 2013				PS <sup>3</sup>	+ I,II Hs, Ss
<b>Omalogyridae</b>					
<i>Ammonicera fischeriana</i> (Monterosato, 1869)				+	+ + I-III Hs, Ss
<i>Ammonicera rota</i> (Forbes & Hanley, 1850)					+ II-IV Ss
<i>Omalogyra atomus</i> (Philippi, 1841)				+	+ + I,II Ss
<i>Omalogyra simplex</i> (Costa, O. G., 1861)					+ I-IV Ss
<b>Oxynoidae</b>					
<i>Lobiger serradifalci</i> (Calcara, 1840)				+	+ I Ss
<i>Oxynoe olivacea</i> Rafinesque, 1814				+	+ I Hs
* <i>Oxynoe viridis</i> (Pease, 1861)					+ I Hs
<b>Peraclidae</b>					
<i>Peraclis reticulata</i> (d'Orbigny, A., 1835)					+ V Ss
<b>Philinidae</b>					
<i>Hermania scabra</i> (Müller, O. F., 1784)				+	+ VII Ss = <i>Philine scabra</i>
<i>Philine catena</i> (Montagu, 1803)				+	+ + I,II Ss
<i>Philine monterosati</i> Monterosato, 1874				+	+ + II-IV Hs, Ss
<i>Philine quadripartita</i> Ascanius, 1772				+	+ + I-III Hs, Ss
<b>Phyllidiidae</b>					
<i>Phyllidia flava</i> Aradas, 1847				+	+ + I,II Hs
<b>Plakobranchidae</b>					
<i>Bosellia mimetica</i> Trinchese, 1891					+ I Hs
<i>Elysia flava</i> Verrill, 1901					+ I Hs
* <i>Elysia grandifolia</i> Kelaart, 1858					+ I Hs
<i>Elysia timida</i> (Risso, 1818)				+	+ I Hs
* <i>Elysia tomentosa</i> Jensen, 1997				+	+ I,II Hs
<i>Elysia viridis</i> (Montagu, 1804)				+	+ + I Hs, Ss
<i>Thuridilla hopei</i> (Vérany, 1853)				4	+ + I Hs, Ss
<b>Pleurobranchaeidae</b>					



Table 1. (Continued.)

<i>Pleurobranchaea meckeli</i> (de Blainville, 1825)	+	+		I,II	Hs, Ss	
<b>Pleurobranchidae</b>						
<i>Berthella aurantiaca</i> (Risso, 1818)	+	+	+	I	Hs, Ss	
<i>Berthella ocellata</i> (Delle Chiaje, 1830)			+	I	Hs	
<i>Berthella plumula</i> (Montagu, 1803)	+		+	II	Ss	
* <i>Berthellina citrina</i> (Rüppell & Leuckart, 1828)			66	I	Hs	
<i>Berthellina edwardsii</i> (Vayssière, 1897)		+	+	I	Hs	
<i>Pleurehdera stellata</i> (Risso, 1826)		+	+	I	Hs	= <i>Berthella stellata</i>
<i>Pleurobranchus membranaceus</i> (Montagu, 1816)	+			II	Hs	
<i>Pleurobranchus testudinarius</i> Cantraine, 1835		+	+	I,II	Hs, Ss	
<b>Polyceridae</b>						
<i>Limacia clavigera</i> (Müller, O. F., 1776)	+	+		I,II	Hs, Ss	
* <i>Plocamopherus ocellatus</i> Rüppell & Leuckart, 1828			+	I,II	Hs	
* <i>Plocamopherus tilesii</i> Bergh, 1877			+	III	Ss	
<i>Polycera quadrilineata</i> (Müller, O. F., 1776)	+	+	+	I,II	Hs	
<b>Pyramidellidae</b>						
<i>Auristomia barashi</i> (Bogi & Galil, 2000)			+	+	I	Pz = <i>Odostomia barashi</i>
<i>Auristomia erjaveciana</i> (Brusina, 1869)	+	+	+	+	I,II	Pz = <i>Odostomia erjaveciana</i>
<i>Brachystomia angusta</i> (Jeffreys, 1867)			+		II,III	Pz = <i>Odostomia angusta</i>
<i>Brachystomia carrozzai</i> (van Aartsen, 1987)			+		II,III	Pz = <i>Odostomia carrozzai</i>
<i>Brachystomia eulimoides</i> (Hanley, 1844)	+	+	+		II,III	Pz = <i>Odostomia eulimoides</i>
<i>Brachystomia scalaris</i> (MacGillivray, 1843)	+	+	+	+	I-IV	Pz = <i>Odostomia scalaris</i>
<i>Chrysallida fenestrata</i> (Adams, A., 1860)	+	+	+	+	I-III	Pz
* <i>Cingulina isseli</i> (Tryon, 1886)			+		I	Pz
<i>Careliopsis cf. modesta</i> (de Folin, 1870)			+		I	Pz
<i>Eulimella acicula</i> (Philippi, 1836)	+	+	+	+	I-VI	Pz
<i>Eulimella bogii</i> van Aartsen, 1995				+	I-VI	Pz
<i>Eulimella neoattenuata</i> Gagliani, 1992			+		II-VII	Pz
<i>Eulimella scillae</i> (Scacchi, 1835)	+	+			III-VI	Pz
<i>Eulimella ventricosa</i> (Forbes, 1844)	+	+	+		III-VII	Pz
<i>Euparthenia bulinea</i> (Lowe, 1841)	+	+			III,IV	Pz
<i>Euparthenia humboldti</i> (Risso, 1826)	+	+	+		I-III	Pz
<i>Folinella excavata</i> (Philippi, 1836)	+	+	+		I-III	Pz = <i>Chrysallida excavata</i>
<i>Folinella ghisottii</i> van Aartsen, 1984			+		I-V	Pz = <i>Chrysallida ghisottii</i>
* <i>Iolaea neofelixoides</i> (Nomura, 1936)			+		I	Pz
<i>Liostomia afzelii</i> Warén, 1991			+	+	II-IV	Pz
<i>Liostomia clavula</i> (Lovén, 1846)			+	+	II-IV	Pz
<i>Liostomia hansgei</i> Warén, 1991	21				VII	Pz
<i>Megastomia conoidea</i> (Brocchi, 1814)	+	+	+		I-VII	Pz
<i>Megastomia conspicua</i> (Alder, 1850)			+	+	I-III	Pz
<i>Megastomia crovatoi</i> Nofroni, Renda & Vannozi, 2022		37	37		I,II	Pz = <i>Odostomia scalaris</i> (in Öztürk et al., 2013)
* <i>Megastomia lorioli</i> (Hornung & Mermod, 1924)			+	+	I,II	Pz = <i>Odostomia lorioli</i>
<i>Noemiamea dolioliformis</i> (Jeffreys, 1848)	+		+		I	Pz
<i>Odetta zekiergeni</i> Öztürk, 2013			+		I	Pz
<i>Odostomella bicincta</i> (Tiberi, 1868)			+		II-VI	Pz
<i>Odostomella doliolum</i> (Philippi, 1844)	+	+	+		I-VII	Pz
<i>Odostomia acuta</i> Jeffreys, 1848	+	+	+		I-III	Pz
<i>Odostomia improbabilis</i> Oberling, 1970			+	+	I,II	Pz = <i>Marginodostomia improbabilis</i>

Table 1. (Continued.)

<i>Odostomia kromi</i> van Aartsen, Menkhorst & Gittenberger, 1984			+	+	I,II	Pz	
<i>Odostomia lukisii</i> Jeffreys, 1859			+	+	I-III	Pz	
<i>Odostomia megerlei</i> (Locard, 1886)				+	II	Pz	
<i>Odostomia plicata</i> (Montagu, 1803)	+	+		+	I,II	Pz	
<i>Odostomia silesui</i> Nofroni, 1988		21	+		VI, VII	Pz	
<i>Odostomia striolata</i> Forbes & Hanley, 1850		+	+	+	I-IV	Pz	
<i>Odostomia turriculata</i> Monterosato, 1869				+	I,II	Pz	
<i>Odostomia turrita</i> Hanley, 1844		+	+	+	I-III	Pz	
<i>Odostomia unidentata</i> (Montagu, 1803)		+	+	+	I-VI	Pz	
<i>Odostomia widmeri</i> Tisselli & Manousis, 2022				32	I	Pz	
<i>Ondina anceps</i> Gaglioli, 1992			+		II	Pz	
<i>Ondina crystallina</i> Locard, 1891			+		II,III	Pz	
<i>Ondina diaphana</i> (Jeffreys, 1848)			+	+	I-III	Pz	
<i>Ondina michaelae</i> Cachia & Mifsud, 2015			+	+	I,II	Pz	<i>Leucotina</i> cf. <i>eva</i> (47) was described to <i>Ondina michaelae</i>
<i>Ondina obliqua</i> (Alder, 1844)		5	+		I,II	Pz	
<i>Ondina vitrea</i> (Brusina, 1866)			+	+	I-III	Pz	
<i>Ondina warreni</i> (Thompson, 1845)		+	+	+	I-III	Pz	
* <i>Oscilla galilae</i> Bogi, Karhan & Yokeş, 2012				+	I	Pz	
* <i>Oscilla virginiae</i> Peñas, Rolán & Sabelli, 2020				50	II	Pz	
<i>Parthenina alesii</i> Micali, Nofroni & Perna, 2012				+	I	Pz	
<i>Parthenina clathrata</i> (Jeffreys, 1848)		+	+	+	I-III	Pz	
<i>Parthenina decussata</i> (Montagu, 1803)			+	+	I,II	Pz	
<i>Parthenina dollfusi</i> (Kobelt, 1903)				+	I-III	Pz	
<i>Parthenina emaciata</i> (Brusina, 1866)	+	+	+	+	I-III	Pz	= <i>Chrysallida emaciata</i>
<i>Parthenina flexuosa</i> (Monterosato, 1874)		+	+		IV-VII	Pz	
<i>Parthenina indistincta</i> (Montagu, 1808)		+	+	+	I-III	Pz	
<i>Parthenina juliae</i> (de Folin, 1872)			+	+	I-III	Pz	
<i>Parthenina interstincta</i> (Adams, J., 1797)	+	+	+	+	I-VII	Pz	= <i>Chrysallida interstincta</i>
<i>Parthenina limitum</i> (Brusina, 1876)				+	I	Pz	= <i>Chrysallida limitum</i>
<i>Parthenina monozona</i> (Brusina, 1869)		+	+	+	I,II	Pz	= <i>Chrysallida intermixta</i>
<i>Parthenina palazzii</i> (Micali, 1984)			+	+	II,III	Pz	
<i>Parthenina suturalis</i> (Philippi, 1844)			+	+	I-III	Pz	
<i>Parthenina terebellum</i> (Philippi, 1844)	+	+	+	+	I-III	Pz	= <i>Chrysallida terebellum</i>
<i>Pyrgiscus jeffreysii</i> (Jeffreys, 1848)		+	+	+	I-III	Pz	= <i>Turbonilla jeffreysii</i>
<i>Pyrgiscus rufus</i> (Philippi, 1836)		+	+	+	I-V	Pz	= <i>Turbonilla rufa</i>
<i>Pyrgostylus striatulus</i> (Linnaeus, 1758)		+	+	+	I,II	Pz	= <i>Turbonilla striatula</i>
* <i>Pyrgulina fischeri</i> Hornung & Mermod, 1925				+	I,II	Pz	= <i>Chrysallida fischeri</i>
* <i>Pyrgulina nana</i> Hornung & Mermod, 1924			+	+	I,II	Pz	= <i>Chrysallida micronana</i>
* <i>Pyrgulina pirinthella</i> Melvill, 1910				+	I	Pz	= <i>Chrysallida pirinthella</i>
* <i>Pyrgulina pupaeformis</i> (Souverbie, 1865)				+	I, II	Pz	= <i>Chrysallida maiae</i> (= <i>Pyrgulina maiae</i> ) (Zenetos et al., 2022)
<i>Pyrgulina stefanisi</i> (Jeffreys, 1869)				+	III-VII	Pz	= <i>Chrysallida stefanisi</i>
<i>Spiralina alpinoligustica</i> (Sacco, 1892)	+	+	+	+	I-III	Pz	= <i>Chrysallida incerta</i>
* <i>Syrnola cinctella</i> A. Adams, 1860				+	I	Pz	
* <i>Syrnola fasciata</i> Jickeli, 1882			+	+	I,II	Pz	
* <i>Syrnola lendix</i> (Adams, A., 1863)				+	I,II	Pz	
<i>Syrnola minuta</i> Adams, H., 1869		21	+		II-VII	Pz	

**Table 1.** (Continued.)

<i>Tiberia minuscula</i> (Monterosato, 1880)				+		IV	Pz	
<i>Tibersyrnola unifasciata</i> (Forbes, 1844)				+	+	III-VII	Pz	= <i>Eulimella unifasciata</i>
<i>Trabecula jeffreysiana</i> Monterosato, 1884				+	+	I-IV	Pz	
<i>Turbonilla acuta</i> (Donovan, 1804)	+	+	+	+		I-III	Pz	
<i>Turbonilla acutissima</i> Monterosato, 1884				+	+	I-III	Pz	
<i>Turbonilla cangeyrani</i> Ovalis & Mifsud, 2017					40	I, II	Pz	
* <i>Turbonilla edgarii</i> (Melvill, 1896)					+	I	Pz	
<i>Turbonilla hamata</i> Nordsieck, 1972					+	I,II	Pz	
<i>Turbonilla lactea</i> (Linnaeus, 1758)				+	+	I-III	Pz	
<i>Turbonilla micans</i> (Monterosato, 1875)				+	+	V-VII	Pz	
<i>Turbonilla paucistriata</i> (Jeffreys, 1884)					+	IV-VII	Pz	
<i>Turbonilla gradata</i> Bucquoy, Dautzenberg & Dollfus, 1883				+	+	I-III	Pz	= <i>Turbonilla pseudogradata</i>
<i>Turbonilla pumila</i> Seguenza, G., 1876					+	I,II	Pz	
<i>Turbonilla pusilla</i> (Philippi, 1844)	+	+	+	+		I,II	Pz	
<b>Retusidae</b>								
* <i>Pyrunculus fourierii</i> (Audouin, 1826)					15	+	I,II	Hs, Ss
<i>Pyrunculus hoernesii</i> (Weinkauff, 1866)				+	+	+	I,II	Ss
<i>Retusa crebrisculpta</i> (Monterosato, 1884)					64		I-III	Ss
* <i>Retusa desgenettii</i> (Audouin, 1826)						16	I	Ss
<i>Retusa laevisculpta</i> (Granata Grillo, 1877)				+	+	15	II	Ss = <i>Cylichnina laevisculpta</i>
<i>Retusa leptoneilema</i> (Brusina, 1866)						+	I	Ss
<i>Retusa mammillata</i> (Philippi, 1836)				+	+	+	I,II	Ss
<i>Retusa minutissima</i> (Monterosato, 1878)				+	+	+	I,II	Ss
<i>Retusa nitidula</i> (Lovén, 1846)						5	+	I-III Ss = <i>Cylichnina nitidula</i>
<i>Retusa truncatula</i> (Bruguière, 1792)	+	+	+	+			I-III	Ss
<i>Retusa umbilicata</i> (Montagu, 1803)	+	+	+	+			I,II	Hs, Ss = <i>Cylichnina umbilicata</i>
<b>Rhizoridae</b>								
<i>Volvulella acuminata</i> (Brugière, 1792)				+	+	+	I	Ss
<b>Ringiculidae</b>								
<i>Ringicula auriculata</i> (Ménard de la Groye, 1811)				+	+	+	I,II	Ss
<i>Ringicula conformis</i> Monterosato, 1877				+	+	+	II-VI	Hs, Ss
<b>Rissoellidae</b>								
<i>Rissoella diaphana</i> (Alder, 1848)						52	I	Hs
<i>Rissoella inflata</i> (Monterosato, 1880)						52	I-III	Hs, Ss
<b>Samlidae</b>								
<i>Luisella babai</i> (Schmekel, 1972)					+	+	I,II	Hs = <i>Flabellina babai</i>
<b>Scaphandridae</b>								
<i>Scaphander lignarius</i> (Linnaeus, 1758)				+	+		II-VII	Ss
<b>Scyllaeidae</b>								
<i>Scyllaea pelagica</i> Linnaeus, 1758						+	I	Hs
<b>Siphonariidae</b>								
* <i>Siphonaria crenata</i> Blainville, 1827						+	I	Hs
<i>Williamia gussoni</i> (Costa, O. G., 1829)				+	+	+	I-III	Hs, Ss
<b>Tergipedidae</b>								
<i>Tergipes tergipes</i> (Forsskål, 1775)				+			I,II	Ss
<b>Tethydidae</b>								
* <i>Melibe viridis</i> (Kelaart, 1858)					44	+	I,II	Ss
<i>Tethys fimbria</i> Linnaeus, 1767					56	+	+	II-IV Ss

Table 1. (Continued.)

<b>Tornatinidae</b>							
* <i>Acteocina crithodes</i> Melvill & Standen, 1901				+	II	Ss	
* <i>Acteocina mucronata</i> (Philippi, 1849)		61		+	I	Ss	
<b>Trimusculidae</b>							
<i>Trimusculus mammillaris</i> (Linnaeus, 1758)				+	+	I Ss	
<b>Trinchesiidae</b>							
<i>Trinchesia caerulea</i> (Montagu, 1804)				+	+	II Hs = <i>Cuthona caerulea</i>	
<i>Trinchesia foliata</i> (Forbes & Goodsir, 1839)	+					I Ss = <i>Cuthona foliata</i>	
<i>Trinchesia genovae</i> (O'Donoghue, 1926)					+	II Hs = <i>Cuthona genovae</i>	
<b>Tritoniidae</b>							
<i>Marionia blainvillea</i> (Risso, 1818)				+		II Ss	
<i>Candiella manicata</i> (Deshayes, 1853)					+	I Ss = <i>Tritonia manicata</i>	
<i>Candiella odhneri</i> (Tardy, 1963)				+		II Hs = <i>Tritonia nilsodhneri</i>	
<b>Tylodiniidae</b>							
<i>Tylodina perversa</i> (Gmelin, 1791)				+	+	I,II Hs, Ss	
<b>Umbraculidae</b>							
<i>Spirisella unguiculus</i> Rang, 1828					+	I Ss	
<i>Umbraculum umbraculum</i> (Lightfoot, 1786)		+	+	+		I,II Hs,Ss	
<b>Volvatellidae</b>							
<i>Ascobulla fragilis</i> (Jeffreys, 1856)				+	+	II Hs, Ss	
<b>Subclass: Neritimorpha</b>							
<b>Neritidae</b>							
* <i>Nerita sanguinolenta</i> Menke, 1829					+	I Hs, Ss	
* <i>Smaragdia souverbiana</i> (Montrouzier, 1863)					+	I Hs, Ss	
<i>Smaragdia viridis</i> (Linnaeus, 1758)		+	+	+		I,II Hs, Ss	
<b>Subclass: Patellogastropoda</b>							
<b>Lottiidae</b>							
<i>Tectura virginea</i> (Müller, O. F., 1776)		+	+	+		I-IV Hs, Ss	
<b>Patellidae</b>							
<i>Patella caerulea</i> Linnaeus, 1758		+	+	+	+	I Hs	
<i>Patella rustica</i> Linnaeus, 1758					+	+	I Hs
<i>Patella ulyssiponensis</i> Gmelin, 1791					+	+	I,II Hs
<b>Subclass: Vetigastropoda</b>							
<b>Anatomidae</b>							
<i>Anatoma crispata</i> (Fleming, 1828)		+	+			III-IV Ss	
<b>Calliostomatidae</b>							
<i>Calliostoma conulus</i> (Linnaeus, 1758)		+	+	+		II,III Hs, Ss	
<i>Calliostoma granulatum</i> (Born, 1778)		+	+	+		II-IV Ss	
<i>Calliostoma laugieri</i> (Payraudeau, 1826)		+	+	+		I-III Hs, Ss	
<i>Calliostoma virescens</i> Coen, 1933					+	I Hs	
<i>Calliostoma zizyphinum</i> (Linnaeus, 1758)		+	+	+		II-IV Hs, Ss	
<b>Chilodontaidae</b>							
<i>Danilia tinei</i> (Calcara, 1839)		+				III, IV Ss	
<i>Putzeysia wiseri</i> (Calcara, 1842)		+				III-VII Ss	
<b>Colloniidae</b>							
<i>Homalopoma sanguineum</i> (Linnaeus, 1758)		+	+	+		I-IV Hs, Ss	
<b>Conradiidae</b>							
* <i>Conradia eutornisca</i> (Melvill, 1918)					+	I Hs, Ss = <i>Parviturbo dibellai</i>	
<b>Fissurellidae</b>							

**Table 1.** (Continued.)

<i>Diodora demartiniorum</i> Buzzurro & Russo, 2005					+	I	Hs
<i>Diodora dorsata</i> (Monterosato, 1878)					+	I	Hs
<i>Diodora gibberula</i> (Lamarck, 1822)					+	+	+
<i>Diodora graeca</i> (Linnaeus, 1758)		+	+	+	+	I-V	Hs, Ss
<i>Diodora italica</i> (Defrance, 1820)					+	+	+
<i>Diodora italica</i> (Defrance, 1820)					+	+	+
<i>*Diodora ruppellii</i> (Sowerby I, G. B., 1835)						+	I,II
<i>Emarginula adriatica</i> Costa, O. G., 1830					+	+	+
<i>Emarginula huzardii</i> Payraudeau, 1826						+	+
<i>Emarginula octaviana</i> Coen, 1939						+	+
<i>Emarginula rosea</i> Bell, T., 1824		+	+	+		II-IV	Hs, Ss
<i>Emarginula sicula</i> Gray, J.E., 1825					+	+	+
<i>Fissurella nubecula</i> (Linnaeus, 1758)						+	+
<b>Haliotidae</b>							
<i>Haliotis tuberculata</i> Linnaeus, 1758					+	+	I,II
<b>Lepetellidae</b>							
<i>Lepetella laterocompressa</i> (de Rayneval & Ponzi, 1854)					+		III
<b>Phasianellidae</b>							
<i>Tricolia pullus</i> (Linnaeus, 1758)		36	+	+	+		I,II
<i>Tricolia speciosa</i> (Megerlevon Mühlfeld, 1824)			+	+	+		I,II
<i>Tricolia tenuis</i> (Michaud, 1829)			+	+	+		I,II
<b>Scissurellidae</b>							
<i>Scissurella costata</i> d'Orbigny, 1824		+	+	+	+		I-III
<i>Sinezona cingulata</i> (Costa O.G., 1861)						+	+
<b>Skeneidae</b>							
<i>Skenea catenoides</i> (Monterosato, 1877)						+	I,II
<i>Skenea serpuloides</i> (Montagu, 1808)						+	I-III
<b>Trochidae</b>							
<i>Clanculus corallinus</i> (Gmelin, 1791)			+	+	+		I,II
<i>Clanculus cruciatus</i> (Linnaeus, 1758)			+	+	+		I,II
<i>Clanculus jussieui</i> (Payraudeau, 1826)				+	+		I,II
<i>Clelandella miliaris</i> (Brocchi, 1814)			+	+	+		III,IV
<i>Gibbula ardens</i> (Salis Marschlin, 1793)			+	+	+		I,II
<i>Gibbula deversa</i> Milaschewitsch, 1916		+	+				II,III
<i>Gibbula fanulum</i> (Gmelin, 1791)			+	+	+		I-IV
<i>Gibbula guttadauri</i> (Philippi, 1836)			+	+	+		I,II
<i>Gibbula magus</i> (Linnaeus, 1758)			+	+	+		I,II
<i>Gibbula philberti</i> (Récluz, 1843)			+	+	+		I
<i>Gibbula turbinoides</i> (Deshayes, 1835)			+	+	+		I,II
<i>Jujubinus exasperatus</i> (Pennant, 1777)			+	+	+		I-IV
<i>Jujubinus gravinae</i> (Dautzenberg, 1881)				+			I-III
<i>Jujubinus karpathoensis</i> Nordsieck, 1973				+			I,II
<i>Jujubinus montagui</i> (Wood, W., 1828)			+		+		II-IV
<i>Jujubinus striatus</i> (Linnaeus, 1758)			+	+	+		I-III
<i>Phorcus articulatus</i> (Lamarck, 1822)			+	+	+		I
<i>Phorcus mutabilis</i> (Philippi, 1851)			+	+	+		I
<i>Phorcus richardi</i> (Payraudeau, 1826)			+	+	+		I,II
<i>Phorcus turbinatus</i> (Born, 1778)			+	+	+		I
<i>*Pseudominolia nedyma</i> (Melvill, 1897)						+	I-III

**Table 1.** (Continued.)

<i>Steromphala adansonii</i> (Payraudeau, 1826)	+	+	+	+	I,II	Hs, Ss	= <i>Gibbula adansonii</i>
<i>Steromphala adriatica</i> (Philippi, 1844)	+	+	+		I,II	Hs	= <i>Gibbula adriatica</i>
<i>Steromphala albida</i> (Gmelin, 1791)	+	+	+	+	I,II	Hs, Ss	= <i>Gibbula albida</i>
<i>Steromphala divaricata</i> (Linnaeus, 1758)	+	+	+	+	I,II	Hs, Ss	= <i>Gibbula divaricata</i>
<i>Steromphala leucophaea</i> (Philippi, 1836)				+	II	Hs, Ss	= <i>Gibbula leucophaea</i>
<i>Steromphala racketti</i> (Payraudeau, 1826)		+			II	Ss	= <i>Gibbula racketti</i>
<i>Steromphala rarilineata</i> (Michaud, 1829)		+	+	+	I,II	Hs, Ss	= <i>Gibbula rarilineata</i>
<i>Steromphala spratti</i> (Forbes, 1844)		+	+	+	I,II	Ss	= <i>Gibbula spratti</i>
<i>Steromphala umbilicaris</i> (Linnaeus, 1758)		+	+	+	I,II	Hs, Ss	= <i>Gibbula umbilicaris</i>
<i>Steromphala varia</i> (Linnaeus, 1758)		+	+	+	I,II	Hs, Ss	= <i>Gibbula varia</i>
* <i>Stomatella impertusa</i> (Burrow, 1815)				+	I	Hs	
* <i>Trochus erithreus</i> Brocchi, 1821				+	I	Hs	
<b>Turbinidae</b>							
<i>Bolma rugosa</i> (Linnaeus, 1767)		+	+	+	II,III	Hs, Ss	
<b>Class: POLYPLACOPHORA</b>							
<b>Acanthochitonidae</b>							
<i>Acanthochitona crinita</i> (Pennant, 1777)	26	+	+	+	I-IV	Hs	
<i>Acanthochitona fascicularis</i> (Linnaeus, 1767)	+	+	+	+	I-IV	Hs, Ss	
<b>Callochitonidae</b>							
<i>Callochiton septemvalvis</i> (Montagu, 1803)			+	+	I-VI	Hs, Ss	
<b>Chitonidae</b>							
<i>Rhyssoplax corallina</i> (Risso, 1826)		+	+	+	II-IV	Hs, Ss	= <i>Chiton corallinus</i>
<i>Rhyssoplax olivacea</i> (Spengler, 1797)		+	+	+	I,II	Hs, Ss	= <i>Chiton olivaceus</i>
<b>Hanleyidae</b>							
<i>Hanleya hanleyi</i> (Bean, W., 1844)			+		III	Ss	
<b>Ischnochitonidae</b>							
<i>Ischnochiton rissoi</i> (Payraudeau, 1826)			+	+	I-III	Hs, Ss	
<b>Leptochitonidae</b>							
<i>Lepidopleurus cajetanus</i> (Poli, 1791)		+	+	+	I,II	Hs, Ss	
<i>Leptochiton bedullii</i> Dell'Angelo & Palazzi, 1986			+	47	I-III	Hs, Ss	= <i>Leptochiton boetgeri</i>
<i>Leptochiton cancellatus</i> (Sowerby, G. B. II, 1840)		+	+	+	II	Ss	
<i>Leptochiton cimicoides</i> (Monterosato, 1879)		+	+		I-III	Hs, Ss	
<i>Leptochiton scabridus</i> (Jeffreys, 1880)			+		I	Hs	
<i>Parachiton africanus</i> (Nierstrasz, 1906)		+	+		I-IV	Hs, Ss	= <i>Leptochiton africanus</i>
<b>Tonicellidae</b>							
<i>Lepidochitona caprearum</i> (Scacchi, 1836)	+	+	+	+	I-IV	Hs, Ss	
<i>Lepidochitona cinerea</i> (Linnaeus, 1767)		+	+	+	I	Hs, Ss	
<i>Lepidochitona furtiva</i> (Monterosato, 1879)			+		I	Ss	
<i>Lepidochitona monterosatoi</i> Kaas & Van Belle, 1981			+	+	II	Hs, Ss	
<b>Class: SCAPHOPODA</b>							
<b>Dentaliidae</b>							
<i>Antalis dentalis</i> (Linnaeus, 1758)		+	+	+	I,II	Ss	
<i>Antalis inaequicostata</i> (Dautzenberg, 1891)		+	+	+	I-III	Hs, Ss	
<i>Antalis panorma</i> (Chenu, 1843)			+	+	III,IV	Ss	
<i>Antalis rossati</i> (Caprotti, 1966)			+		II	Ss	
<i>Antalis vulgaris</i> (da Costa, 1778)		+	+	+	I-III	Ss	
<b>Entalinidae</b>							
<i>Entalina tetragona</i> (Brocchi, 1814)		+	+	+	III-VII	Ss	

Table 1. (Continued.)

<b>Fustiariidae</b>						
<i>Fustiaria rubescens</i> (Deshayes, 1826)	+	+	+	II,III	Ss	
<b>Gadilidae</b>						
<i>Cadulus jeffreysi</i> (Monterosato, 1875)		+		IV	Ss	
<i>Dischides politus</i> (S. Wood, 1842)		+	+	II-IV	Ss	
<b>Pulsellidae</b>						
<i>Pulsellum lofotense</i> (Sars, M., 1865)		+		III,IV	Ss	
<b>Class: SOLENOGASTRES</b>						
<b>Pruvotinidae</b>						
<i>Eleutheromenia carinata</i> Salvini-Plawen & Öztürk, 2006		+		III	Ss	
<b>Class: CEPHALOPODA</b>						
<b>Ancistrocheiridae</b>						
<i>Ancistrocheirus lesueurii</i> (d'Orbigny,1842)		+		VI-VII	P	
<b>Argonautidae</b>						
<i>Argonauta argo</i> Linnaeus, 1758		+		I-IV	P	
<b>Bathypolypodidae</b>						
<i>Bathypolypus sponsalis</i> (Fischer, P. & Fischer, H., 1892)		+		VI,VII	D	
<b>Brachioteuthidae</b>						
<i>Brachioteuthis riisei</i> (Steenstrup, 1882)		+		II-VII	P	
<b>Chiroteuthidae</b>						
<i>Chiroteuthis veranii</i> (Férussac, 1834)	+	+	55	V-VII	P	
<b>Chtenopterygidae</b>						
<i>Chtenopteryx sicula</i> (Vérany, 1851)		+		V-VII	P	
<b>Eledonidae</b>						
<i>Eledone cirrhosa</i> (Lamarck, 1798)	+	+	+	III-VII	D	
<i>Eledone moschata</i> (Lamarck, 1798)	+	+	+	II-V	D	
<b>Enoploteuthidae</b>						
<i>Abraliopsis morisii</i> (Vérany, 1839)		47		III-VII	P	
<i>Abralia veranyi</i> (Rüppel, 1844)		+	+	III-VII	P	
<b>Histioteuthidae</b>						
<i>Histioteuthis bonnellii</i> (Férussac, 1834)		+		VI-VII	P	
<i>Histioteuthis reversa</i> (Verrill, 1880)		+	25	V-VII	P	
<b>Loliginidae</b>						
<i>Alloteuthis media</i> (Linnaeus, 1758)	+	+	+	II-VI	D	
<i>Alloteuthis subulata</i> (Lamarck, 1798)		+	+	II-IV	D	
<i>Loligo forbesii</i> Steenstrup, 1856		+	+	III-VII	D	
<i>Loligo vulgaris</i> Lamarck, 1798	+	+	+	II-IV	D	
* <i>Sepioteuthis lessoniana</i> d'Orbigny, A., 1826			+	I-III	D	
<b>Octopodidae</b>						
* <i>Amphioctopus aegina</i> (Gray, 1849)			+	II-IV	D	
<i>Callistoctopus macropus</i> (Risso, 1826)	+	+	+	I-III	D	
<i>Macrotritopus defilippi</i> (Vérany, 1851)			+	I-III	D	
<i>Octopus salutii</i> Vérany, 1839		+	55	IV-VI	D	
<i>Octopus vulgaris</i> Cuvier, 1797	+	+	+	I-IV	D	
<i>Pteroctopus tetracirrhus</i> (Delle Chiaje, 1830)		+	+	V-VII	D	
<i>Scaevargus unircirrhus</i> (Della Chiaje, 1841)		+	+	IV-VII	D	
<b>Octopoteuthidae</b>						
<i>Octopoteuthis sicula</i> Rüppel, 1844		+	+	V-VII	P	



**Table 1.** (Continued.)

<b>Ocythoidae</b>									
<i>Ocythoe tuberculata</i> Rafinesque, 1814				+	I-III	P			
<b>Ommastrephidae</b>									
<i>Illex coindetii</i> (Vérany, 1839)				+	+	+	II-VII	D	
<i>Ommastrephes bartramii</i> (Lesueur, 1821)					+	55	I-VII	P	
<i>Todaropsis eblanae</i> (Ball, 1841)				+	+	+	III-VII	D	
<i>Todarodes sagittatus</i> (Lamarck, 1798)				+	+	+	I-VII	P	
<b>Onychoteuthidae</b>									
<i>Ancistroteuthis lichtensteinii</i> [Férussac (in Férussac & Orbigny, 1835)]					+		IV-VII	P	= <i>Ancistroteuthis lichtensteini</i>
<i>Onychoteuthis banksii</i> (Leach, 1817)					+	55	II-VII	P	
<b>Pyroteuthidae</b>									
<i>Pyroteuthis margaritifera</i> (Rüppel, 1844)					+	+	II-VII	P	
<b>Sepiidae</b>									
<i>Rhombosipion elegans</i> (Blainville, 1827)				+	+	+	III-VI	D	= <i>Sepia elegans</i>
<i>Rhombosipion orbignyanum</i> (Férussac, 1826)				+	+	+	III-VI	D	= <i>Sepia orbignyanana</i>
<i>Sepia officinalis</i> Linnaeus, 1758				+	+	+	I-IV	D	
<b>Sepiolidae</b>									
<i>Adinaefiola ligulata</i> (Naef, 1912)					47		III-V	D	= <i>Sepiola ligulata</i>
<i>Heteroteuthis dispar</i> (Rüppel, 1844)					+	55	IV-VII	P	
<i>Neorossia caroli</i> (Joubin, 1902)					+		V-VII	D	
<i>Rondeletiola minor</i> (Naef, 1912)				+	+	+	III-VII	D	
<i>Rossia macrosoma</i> (Della Chiaje, 1830)					+	+	IV-VII	D	
<i>Sepietta neglecta</i> Naef, 1916				+	+	+	III-VI	D	
<i>Sepietta obscura</i> Naef, 1916				+	+		II-IV	D	
<i>Sepietta oweniana</i> (d'Orbigny, 1841)				+	+	+	III-VII	D	
<i>Sepiola intermedia</i> Naef, 1912					+		II-IV	D	
<i>Sepiola robusta</i> Naef, 1912					+		II-IV	D	
<i>Sepiola rondeletii</i> Leach, 1817				+	+		II-IV	D	
<i>Sepiola steenstrupiana</i> Levy, 1912						+	I,II	D	
<b>Thysanoteuthidae</b>									
<i>Thysanoteuthis rhombus</i> Troschel, 1857					+		II-VII	P	
<b>Tremoctopodidae</b>									
<i>Tremoctopus violaceus</i> Delle Chiaje, 1830					+	35	I-III	P	

**References in Table 1:**

“+” for the reference see Öztürk et., 2014; 1. Aartsen and Fehr-de Wal, 1978; 2. Aartsen and Good, 2000; 3. Albayrak and Çağlar, 2016; 4. Artüz et al., 2018; 5. Aslan and Ovalis, 2017; 6. Bariche et al., 2020; 7. Bitlis, 2019; 8. Bitlis and Öztürk, 2016; 9. Bitlis and Öztürk, 2017; 10. Bitlis et al., 2017; 11. Boyer et al., 2020; 12. Buzzurro and Greppi, 1996; 13. Cachia and Mifsud, 2015; 14. Chaban, 2020; 15. Crocetta et al., 2015; 16. Crocetta and Tringali, 2015; 17. Çevik and Gündoğdu, 2016; 18. Çevik et al., 2015; 19. Çulha and Sezgin, 2019; 20. Demir, 2003; 21. Doğan et al., 2016; 22. GBIF<sup>2</sup>; 23. Giannuzzi-Savelli et al., 2018; 24. Giannuzzi-Savelli et al., 2019; 25. Gökoğlu et al., 2021; 26. Gözler et al., 2015; 27. Gündoğdu et al., 2017; 28. Kabasakal et al., 2005; 29. Karhan et al., 2010; 30. Kowalevsky, 1901; 31. Kurt-Şahin et al., 2017; 32. Manousis et al., 2022; 33. Micali et al., 2016; 34. Mifsud and Ovalis, 2019; 35. Montesanto et al., 2022; 36. Nikitin, 1948; 37. Nofroni et al., 2022; 38. Orfanidis et al., 2021; 39. Ostroumoff, 1894; 40. Ovalis and Mifsud, 2017; 41. Ovalis and Mifsud, 2019; 42. Östan and Ovalis, 2023; 43. Östan and Ovalis, 2024; 44. Özalp et al., 2021; 45. Öztürk, 2021; 46. Öztürk et al., 2017; 47. Öztürk et al., 2014; 48. Öztürk and Geyran, 2020; 49. Öztürk and Ovalis, 2024; 50. Öztürk and Recevik, 2023; 51. Öztürk et al., 2015; 52. Öztürk et al., 2023b; 53. Pusateri et al., 2018; 54. Pusateri et al., 2017; 55. Salman et al., 2023; 56. Saraçoğlu and Topçu, 2023; 57. Spada et al., 2023; 58. Stamouli et al., 2017; 59. Storsberg and Ovalis, 2021; 60. Storsberg and Ovalis, 2022; 61. Tiralongo et al., 2022; 62. Tsagarakis et al., 2021; 63. Tunçer et al., 2016; 64. Türker et al., 2020; 65. Ulman et al., 2017; 66. Yokeş et al., 2018 and 67. Yumun et al., 2017.

<sup>2</sup>GBIF (2024). Global Biodiversity Information Facility database <https://www.gbif.org/> Accessed on 28 May 2024



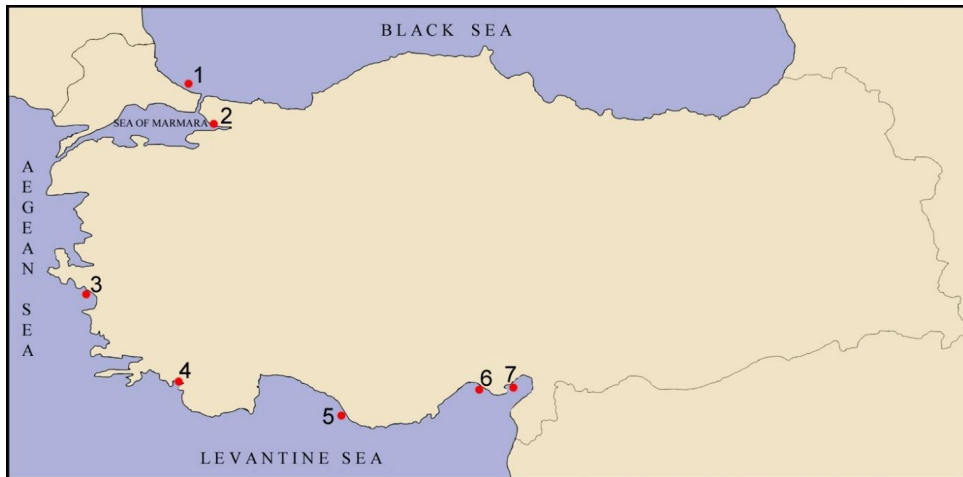


Figure 1. Map of the localities where new record species were found.

presence of a two-layered water column stratification in both straits, comprising an upper layer of Black Sea water and a lower layer of Mediterranean water, which is also a characteristic of the Sea of Marmara. In addition, species under protection according to the Barcelona Convention are indicated in Table 1, and species protected according to other conventions are also included.

The new species records were deposited in the ESFM (Museum of the Faculty of Fisheries) at Ege University, İzmir, Türkiye.

### 3. Results and discussion

The present inventory list of molluscs from the coasts of Türkiye includes all previously reported species in studies carried out along the Turkish coasts by the end of April 2024 and the newly recorded species presented herein. The species list comprises 1133 mollusc species belonging to 7 classes (Bivalvia, Caudofoveata, Cephalopoda, Gastropoda, Polyplacophora, Scaphopoda, and Solenogastres), 255 families, and 617 genera (Table 1, Figure 2). Among the classes, Gastropoda dominated with 772 species in 374 genera and 159 families, followed by Bivalvia with 281 species in 187 genera and 61 families, and Cephalopoda with 50 species in 38 genera and 20 families. The class Solenogastres was represented by a single species only, whereas for the class Monoplacophora, no record was found.

The highest number of species (875 species) was found in the Aegean Sea, followed by the Levantine Sea (859 species), Sea of Marmara (635 species), and Black Sea (163 species) (Figure 3). Since the latest inventory list, eight species were added to the mollusc fauna of the Turkish Black Sea, 94 species to those of the Sea of Marmara, 47 species to those of the Turkish Aegean Sea, and 53 species to those of the Turkish Levantine Sea (Table 1, Figure 3). The higher number of species added to the inventory list

of the Sea of Marmara compared to the other seas was due to the fact the mollusc fauna of the Bosphorus and the Dardanelles, which were listed separately in the latest inventory list, were compiled as representing the mollusc fauna of the Sea of Marmara. Although the number of species known from the Levantine and Aegean seas were close to each other, the number of species decreased significantly toward the Black Sea.

Among the molluscan classes with representatives along the Turkish coasts, the class Gastropoda dominated along all the coasts, except for the Black Sea, with the highest number of species in the Levantine Sea (581 species) followed by the Aegean Sea (575 species) (Figure 3). In the Black Sea, the class Bivalvia was found to have the highest number of species (83 species), followed by the class Gastropoda (77 species), which was in parallel with the results reported in the most recent species list (Öztürk et al., 2014). The class Solenogastres was only represented by *Eleutheromenia carinata* Salvini-Plawen & Öztürk, 2006 along the Turkish coasts, which was described from the Aegean Sea.

Most of the mollusc species reported from the Turkish coasts were found in soft substrates at shallow depths between 0 and 10 m (752 species), whereas only 109 species were encountered at depths deeper than 600 m (Figure 4).

Considering the species given in the latest inventory list, three species [*Alvania settepassii* Amati & Nofroni, 1985; *Odostomia sicula* Philippi, 1851, and *Retusa pellucida* (Brown, 1827)] were excluded for different reasons. *Odostomia sicula* was synonymized with *Megastomia conoidea* (Brocchi, 1814), *A. settepassii* reported from the Turkish Aegean coast was based on incorrect information, and *R. pellucida* was misidentified. By examining the figure in the relevant literature (Yokeş, 2009, Figure 2), it is evident that the photographed individual is *Pyrrunculus hoernesii* (Weinkauff, 1866).

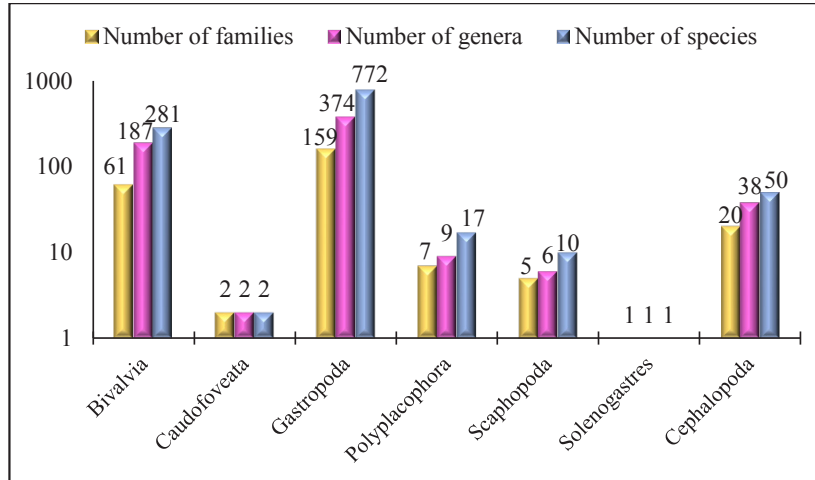


Figure 2. Number of families, genera, and species according to the classes.

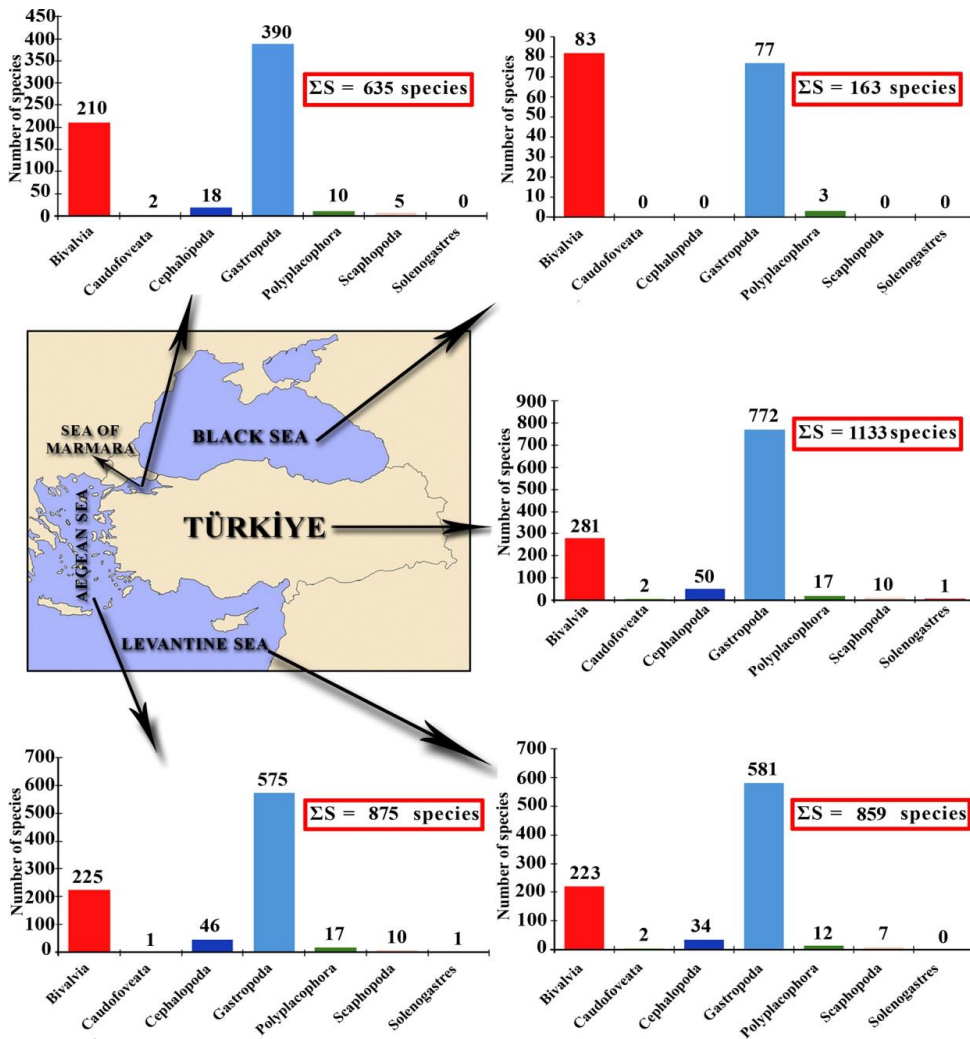
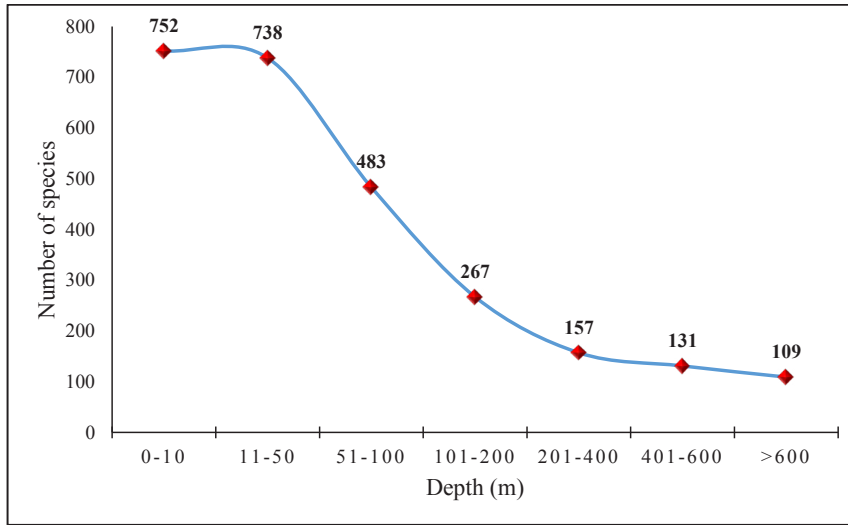


Figure 3. Total number of mollusk species distributed along the Turkish coasts according to the classes, along with the number of species according to the classes for each sea.



**Figure 4.** Depth ranges of the distribution of molluscs reported from the Turkish coasts.

*Fabulina fabula* (Gmelin, 1791), for which the earliest record was obtained from the Sea of Marmara by Ostroumoff (1894) and listed in earlier checklists (Öztürk and Çevik, 2000; Demir, 2003), was overlooked in the latest checklist by Öztürk et al. (2014). On the other hand, *Lepetella laterocompressa* (de Rayneval & Ponzi, 1854), *Raphitoma echinata* (Brocchi, 1814), and *Aplysia parvula* Mörch, 1863 were not removed from the inventory list this time, of which the first two species were indicated as fossils in Molluscabase. On the Turkish coasts, *Lepetella laterocompressa* is only known from the previous records in the Sea of Marmara. However, according to Dantart and Luque (1994), in the Mediterranean Sea, the genus *Lepetella* is represented by *L. espinosae* Dantart & Luque, 1994. On the other hand, *R. echinata* is a problematic taxon, and its nomenclature needs to be clarified. The widespread sea hare species *A. parvula* includes four genetically distinct lineages, containing a total of ten different species (Golestani et al., 2019) and, according to the mentioned authors, mitochondrial sequences from Mediterranean and eastern Atlantic specimens identified as *A. parvula*, resulted to be *Aplysia punctata* (Cuvier, 1803).

The reports of mollusc species from the Turkish coasts, as were previously indicated in Öztürk et al. (2014), showed a sharp increase in number between 1880 and 1910, and 1985 and 2014 (Figure 5). This increase has also continued over the last decade, although the rate of increase in the number of species has varied between seas. In this period, studies with significant contributions were those by Öztürk (2021), Öztürk and Geyran (2020), and Öztürk et al. (2023b).

### 3.1. New findings

In the present inventory list, *Weinkauffia macandrewii* (Smith, 1872), *Isognomon bicolor* (Adams, C. B., 1845) and *Transkeia bogii* (van Aartsen, 2004) are new records for the

Turkish mollusc fauna, *Caecum armoricum* de Folin, 1869 were recorded for the first time from the Turkish coast of the Black Sea, *Aclis attenuans* Jeffreys, 1883 was newly reported from the Sea of Marmara, and *Murchisonella mediterranea* Peñas & Rolán, 2013 is a new record for the Turkish Aegean coast (Table 1, Figure 6). *Caecum armoricum* was sampled at a depth of 25 m in sandy mud material from Kıyıköy (Black Sea) on 15.09.2018. *Aclis attenuans* was recorded at a depth of 500 m in muddy substrate with shell fragments in the Sea of Marmara. Only one specimen of *M. mediterranea* was encountered in a sandy biotope at a depth of 11 m in Hacilar Bay (Zeytineli, Aegean Sea) on 14.10.2017.

Among the new records, *I. bicolor* and *T. bogii* are nonindigenous bivalve species found along the Levantine coast. The first mentioned species was encountered between İskenderun and Fethiye Bays, where it was mostly found in the same habitats with *Brachidontes pharaonis* (Fischer, 1870) on hard substrates at depths of 0.2 to 1.0 m. *Isognomon bicolor* was originally described from Jamaica (Caribbean Sea, western Atlantic) and its presence in the Mediterranean Sea was recently documented and confirmed with molecular analyses by Garzia et al. (2022). *Transkeia bogii* inhabits sandy mud habitats at depths between 5 and 29 m. In the Mediterranean Sea, it was first reported by Bogi and Galil (1999) as *Diplodonta subrotunda* Issel, 1869 from the Haifa Bay (Israel) at depths of 9–25 m.

*Weinkauffia macandrewii*, another newly recorded species, was found in different localities on the Turkish Levantine coast between İskenderun and Fethiye Bays, and on the Aegean coast (Hacilar Bay, Zeytineli, 38,181200 N, 26,517490 E) at depths between 1 and 50 m in sandy muddy biotopes and in *Posidonia oceanica* meadows.

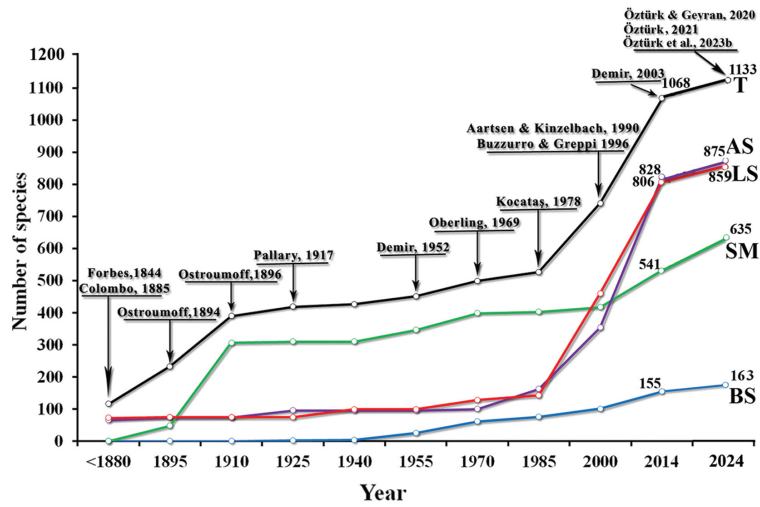


Figure 5. Number of reported mollusc species classified by year, and authors with most significant contributions to each period.



Figure 6. A. *Caecum armoricum*, 1.5 mm; B. *Acilis attenuans*, 2.3 mm, 500 m; C. *Murchisonella mediterranea*, 1.7 mm; D–E. *Atys angustatus*, D-E = 3.9 mm, İskenderun Bay, 30 m; F. Apical view of the specimen; G–I. *Weinkauffia macandrewii*, G-H = 3.9 mm, 10 m, Levantine Sea, I = 2.3 mm; 11 m, Aegean sea; J–L. *Isognomon bicolor*, M, N. *Transkeia bogii*, M<sub>L</sub> = 5.8 mm, 5 m; N<sub>L</sub> = 5.1 mm, 29 m).

**3.2. Alien species**

Of the compiled 1133 mollusc species distributed on the Turkish coasts, 133 are nonindigenous taxa that entered the Mediterranean Sea by different pathways, of which 91 belong to the class Gastropoda, 40 to the class Bivalvia, and two to the class Cephalopoda (Table 1, Figure 7).

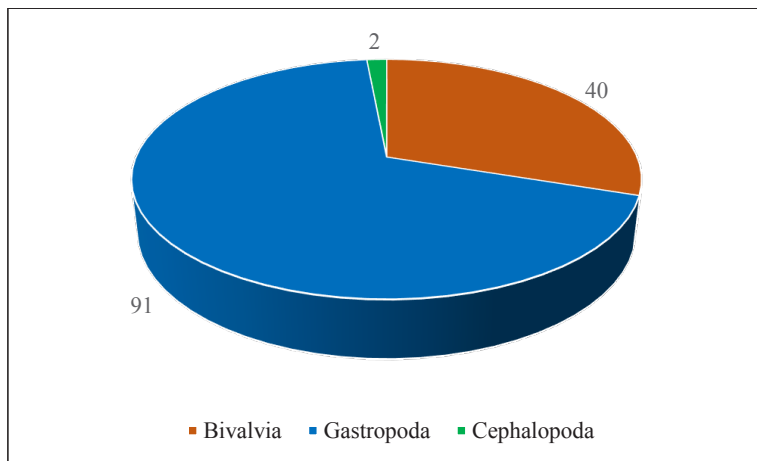
The Levantine coast of Türkiye, especially its eastern part where İskenderun Bay is located (the bay is characteristic with intensive maritime traffic and location close to the Suez Canal), is significant for hosting the highest number of alien species (122 species), whereas only four species are known from the Turkish Black Sea coast (Figure 8).

Of the 123 alien species listed by Çınar et al. (2021) from the Turkish coasts by the end of 2020, some were excluded from the present inventory list for various reasons. Furthermore, 13 taxa were incorporated into the species list (Table 2). Based on the study by Micali et al. (2016), *Atyis angustatus* Smith, E. A., 1872 was herein considered as a valid

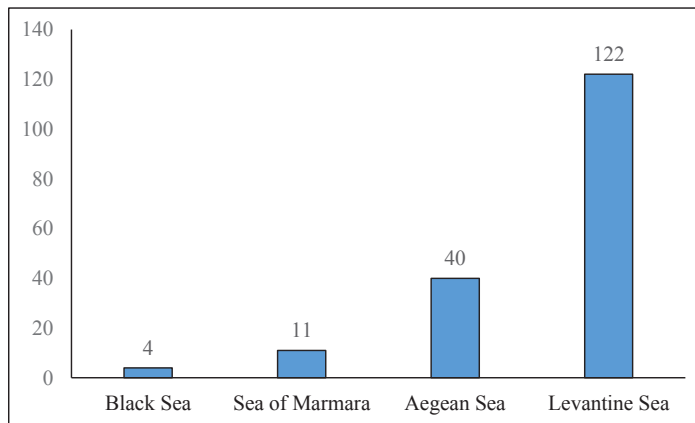
alien species and *Weinkauffia macandrewii* was considered as a native one (Figure 6). In the checklist by Öztürk et al. (2014), *Atyis angustatus* was listed as *A. macandrewii* (= *Weinkauffia macandrewii*) due to uncertainty. Both species are known from the Turkish Levantine coast, and *W. macandrewii* is also distributed on the Turkish coast of the Aegean Sea. The record of *A. angustatus* by Artüz et al. (2018) from the Sea of Marmara was not taken into consideration, as this species may have been misidentified. The reason for this is that no individuals of either species were found, despite the numerous studies conducted in the Sea of Marmara in the last decade. We are of the opinion that the record may refer to the specimen(s) of *Weinkauffia turgidula*, which is another species distributed in the mentioned area.

**3.3. Protected species**

Some molluscs included in the inventory list are protected under various international agreements because of their



**Figure 7.** Number of nonindigenous species on the Turkish coasts according to the classes.



**Figure 8.** Number of nonindigenous species in the seas bordering Türkiye.



**Table 2.** Species excluded or added to the list of alien species from the Turkish coasts by Çınar et al. (2021) (E: excluded species, A: added species).

Class/Species	E	A	Reason/Reference
<b>Bivalvia</b>			
<i>Anadara broughtonii</i> (Schrenck, 1867)	+		Based on empty shells only (Zenetos et al., 2022)
<i>Centrocardita akabana</i> (Sturany, 1899)	+		Excluded (Zenetos et al., 2022)
<i>Isognomon bicolor</i> (Adams, C. B., 1845)		+	Present study
<i>Septifer bilocularis</i> (Linnaeus, 1758)	+		Unsupported record (Zenetos et al., 2012)
<i>Transkeia bogii</i> (van Aartsen, 2004)		+	Present study
<b>Gastropoda</b>			
<i>Atys angustatus</i> Smith, 1872		+	Due to uncertainty, it was not listed before
<i>Bursatella leachii</i> Blainville, 1817	+		Cryptogenic species (Crocetta et al., 2020)
<i>Circulus octoliratus</i> (Carpenter, 1856)		+	Ovalis & Mifsud (2019). Overlooked.
<i>Coriophora lessepsiana</i> Albano, Bakker & Sabelli, 2021		+	Örstan & Ovalis (2024)
<i>Dendrodoris fumata</i> (Rüppell & Leuckart, 1830)	+		Incorrect identification (Zenetos et al., 2022)
<i>Epitonium aranea</i> Bonfitto, 2018		+	Öztürk & Recevik (2023)
<i>Epitonium vaillanti</i> (Jousseume, 1912)		+	Öztürk et al. (2023 b)
<i>Hemiliostraca athenamariae</i> (Mifsud & Ovalis, 2019)		+	Ovalis & Mifsud (2019). Overlooked.
<i>Hemiliostraca clandestina</i> (Mifsud & Ovalis, 2019)		+	Ovalis & Mifsud (2019). Overlooked.
<i>Notarchus punctatus</i> Philippi, 1836	+		Misclassified as an alien species
<i>Oscilla virginiae</i> Peñas, Rolán & Sabelli, 2020		+	Öztürk & Recevik (2023)
<i>Pandalosia subfirmata</i> (O. Boettger, 1887)		+	Storsberg & Ovalis (2021)
<i>Pandalosia ephamilla</i> (R. B. Watson, 1886)		+	Storsberg & Ovalis (2022)
<i>Phosinella digera</i> (Laseron, 1956)		+	Ovalis & Mifsud (2019). Overlooked.
<i>Stosicia annulata</i> (Dunker, 1860)		+	Öztürk & Recevik (2023)

endangered status. A total of 10 species, 7 gastropods [*Charonia variegata* (Lamarck, 1816), *Dendropoma cristatum* (Biondi-Giunti, 1859), *Naria spurca* (Linnaeus, 1758), *Luria lurida* (Linnaeus, 1758), *Ranella olearium* (Linnaeus, 1758), *Tonna galea* (Linnaeus, 1758), and *Zonaria pyrum* (Gmelin, 1791)], and 3 bivalves [*Lithophaga lithophaga* (Linnaeus, 1758), *Pholas dactylus* Linnaeus, 1758, and *Pinna nobilis* Linnaeus, 1758] are protected under the Barcelona Convention (UNEP/MAP, 2018<sup>3</sup>). All protected species are distributed in the Aegean Sea and, except for *R. olearium*, in the Levantine Sea. *Pholas dactylus*, however, is the only taxon distributed in the Black Sea (Figure 9). Except for *P. nobilis*, the above-mentioned species are also covered by the Bern Convention (Council of Europe, 1979<sup>4</sup>).

According to the International Union for Conservation of Nature (IUCN) Red List of Threatened Species (IUCN, 2024<sup>5</sup>), three species, i.e., *Haliotis tuberculata* Linnaeus, 1758 (Vulnerable), *R. olearium* (Near Threatened), and *P. nobilis* (Critically Endangered) are distributed on the Turkish coasts. Along with *H. tuberculata* and *P. nobilis*, which are also covered by different international conventions, *Cerithium vulgatum* Bruguière, 1792 and *T. galea* are also protected by Turkish National Legislation (see Resmi Gazete, 2020a<sup>6</sup>; 2020b<sup>7</sup>). However, it is not entirely clear why *C. vulgatum* is a protected species. It is often found in brown algal facies such as *Cystoseira* spp. and *Posidonia oceanica* meadows, especially in the littoral zone and there has been limited

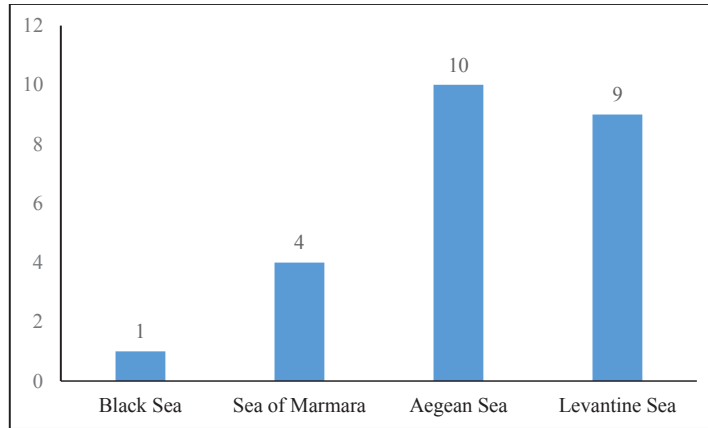
<sup>3</sup>UNEP/MAP (2018). SAP/RAC: SPA-BD Protocol-Annex II: List of endangered or threatened species. [accessed 08 May 2024] Website [https://www.rac-spa.org/sites/default/files/annex/annex\\_2\\_en\\_20182.pdf](https://www.rac-spa.org/sites/default/files/annex/annex_2_en_20182.pdf).

<sup>4</sup>Council of Europe (1979). Convention on the Conservation of European Wildlife and Natural Habitats Convention relative à la conservation de la vie sauvage et du milieu naturel de l'Europe. Bern/Berne, 19 [online]. Website <https://rm.coe.int/1680304355> [accessed 28 May 2024].

<sup>5</sup>IUCN (2024). The IUCN Red List of Threatened Species. version 2023-1. <https://www.iucnredlist.org> [Accessed on 28 May 2024]

<sup>6</sup>Resmi Gazete (2020a). 5/1 Numaralı Ticari Amaçlı Su Ürünleri Avcılığını Düzenleyen Tebliğ, 28 Ağustos 2020, Sayı: 31221. [accessed 28 May 2024]. Website <https://www.resmigazete.gov.tr/eskiler/2020/08/20200822-8.pdf>

<sup>7</sup>Resmi Gazete (2020b). 5/2 Numaralı Amatör Amaçlı Su Ürünleri Avcılığını Düzenleyen Tebliğ, 28 Ağustos 2020, Sayı: 31221. [accessed 28 May 2024]. Website <https://www.resmigazete.gov.tr/eskiler/2020/08/20200822-9.pdf>



**Figure 9.** Number of mollusc species protected by the Barcelona Convention according to the Turkish coasts.

exploitation of this species, which is mostly used as fishing bait. Therefore, in our opinion, the species does not need to be protected.

#### 4. Conclusion

It is apparent from the current inventory list that the number of mollusc species known from the Turkish coasts has nearly doubled in a period of about a quarter of a century since 2000. A total of 745 mollusc species were known in 2000 (Öztürk and Çevik, 2000), and the number of species reached 1133 mollusc taxa by the end of April 2024. Among the listed species, 133 taxa are of nonindigenous origin, mostly distributed on the eastern Levantine coast. However, considering that the number of species known from the Turkish coasts is less

than half of the total number of species known from the entire Mediterranean (2485 species) (Renda et al., 2022), we expect this number to increase with studies that will be carried out in the coming years.

#### Compliance with ethical standards

Ethical approval was not required for this study, as the study is a compilation.

#### Funding

No funding or support was received for this study.

#### Conflict of interest

The authors declare that they have no conflicts of interest or competing interests.

#### References

- Aartsen JJ van, Fehr-de Wal MC (1978). The subfamily Mangeliinae Fisher, 1887 in the Mediterranean. *Conchiglie* 14: 97-110.
- Aartsen JJ van, Goud J (2000). European Marine Mollusca: notes on less well-known species. XV.1. Notes on Lusitanian species of *Parvicardium* Monterosato, 1884, and *Afrocardium richardi* (Audouin, 1826) (Bivalvia, Heterodonta, Cardiidae). *Basteria* 64: 171-186.
- Albayrak S, Çağlar S (2016). Mollusca Fauna of the Sea of Marmara. In *The Sea of Marmara: Marine Biodiversity, Fisheries, Conservation and Governance*. Özsoy E, Çağatay M N, Balkis N, Balkis N, Öztürk B (eds). Turkish Marine Research Foundation (TUDAV) 42: 503-516.
- Appeltans W, Ahyong ST, Anderson G, Angel MV, Artois T et al. (2012). The Magnitude of Global Marine Species Diversity. *Current Biology* 22 (23): 2189-2022. <https://doi.org/10.1016/j.cub.2012.09.036>.
- Artüz ML, Tunçer S, Poursanidis D (2018). Contributions to the biodiversity of sea slugs and shelled relatives of the Sea of Marmara (Mollusca: Gastropoda). *Cahiers de Biologie Marine* 59: 267-276. <https://dx.doi.org/10.21411/CBM.A.88763B1A>
- Aslan H, Ovalis P (2017). On the discovery of *Crithe cossinea* T. Cossignani, 1997, a new marine alien species for the Mediterranean Sea, with additions and remarks on 15 unreported molluscan species from Turkey coast. *Cahiers de Biologie Marine* 58: 173-180. <http://dx.doi.org/10.21411/CBM.A.A2E01445>

- Bariche M, Al-Mabruk S, Ateş M, Büyük A, Crocetta F, et al. (2020). New Alien Mediterranean Biodiversity Records. *Mediterranean Marine Science* 21 (1): 129-145. <https://dx.doi.org/10.12681/mms.21987>
- Bitlis B (2019). Mollusk fauna associated with *Cystoseira barbata* (Stockhouse) C. Agardh, 1820 in the Sea of Marmara (Turkey). *Oceanological and Hydrobiological Studies* 48 (2): 174-183.
- Bitlis B, Öztürk B (2016). Rissooidea Species Distributed along the Turkish Levantine Coast. *Turkish Journal of Fisheries and Aquatic Sciences* 16: 443-454. [https://doi.org/10.4194/1303-2712-v16\\_2\\_24](https://doi.org/10.4194/1303-2712-v16_2_24)
- Bitlis B, Öztürk B (2017). The genus *Alvania* (Gastropoda: Rissoiidae) along the Turkish Aegean coast with the description of a new species. *Scientia Marina* 81(3): 395-411. <https://dx.doi.org/10.3989/scimar.04566.14A>
- Bitlis B, Öztürk B, Doğan A (2017). Contribution to the knowledge of the molluscan fauna of Kuşadası Bay (Aegean Sea). *Turkish Journal of Zoology* 41: 980-990. <https://dx.doi.org/10.3906/zoo-1602-35>
- Bogi C, Galil BS (1999). New findings along the Israeli coast. *La Conchiglia* 31 (292): 29-32.
- Boyer B, Renda W, Öztürk, B (2020). The genus *Granulina* (Mollusca: Gastropoda: Neogastropoda) from the Turkish coasts with taxonomical notes on some Mediterranean species. *Ege Journal of Fisheries and Aquatic Sciences* 37 (1): 65-83. <https://dx.doi.org/10.12714/egejfas.37.1.09>
- Buzzurro G, Greppi E (1996). The Lessepsian molluscs of Tasucu (South-East Turkey). *La Conchiglia* 3-22.
- Cachia C, Mifsud C (2015). Consideration about *Leucotina eva* Thielle, 1925 with description of *Ondina michalaelae* n. sp. (Heterobranchia: Pyramidellidae) (Errata corrigendum: *Triton* 32: 40). *Triton* 31: 3-5.
- Chaban EM (2020). New data on *Roxania* Leach, 1847 (Gastropoda: Heterobranchia) from the Sea of Marmara based on materials of the Russian expedition in 1894. *Труды Зоологического института РАН* 324 (4): 535-547. <https://doi.org/10.31610/trudyzin/2020.324.4.535>
- Crocetta F, Bitar G, Zibrowius H, Oliverio M (2020). Increase in knowledge of the marine gastropod fauna of Lebanon since the 19th century. *Bulletin of Marine Science* 96: 1-22, <https://doi.org/10.5343/bms.2019.0012>
- Crocetta F, Poursanidis D, Tringali LP (2015). Biodiversity of sea slugs and shelled relatives (Mollusca: Gastropoda) of the Cretan Archipelago (Greece), with taxonomic remarks on selected species. *Quaternary International*. <https://doi.org/10.1016/j.quaint.2015.02.061>
- Crocetta F, Tringali L (2015). Mapping alien Mollusca distribution in the Mediterranean Sea: the Lessepsian immigrant *Retusa desgenettii* (Audouin, 1826) reaches Turkey. *Quaternary International* 390:15-20. <https://dx.doi.org/10.1016/j.quaint.2015.03.009>
- Çevik C, Gündoğdu S (2016). New Additions to the Opisthobranchia species present in the Iskenderun Bay. 2nd International Congress on Applied Ichthyology and Aquatic Environment 10 - 12 November 2016, Messolonghi, Greece, 224-227.
- Çevik C, Özcan T, Gündoğdu S (2015). First record of the striate piddock *Martesia striata* (Linnaeus, 1758) (Mollusca:Bivalvia:Pholadidae) in the Mediterranean Sea. *BioInvasions Records* 4 (4): 277-280. <https://dx.doi.org/10.3391/bir.2015.4.4.08>
- Çınar ME, Bilecenoglu M, Yokeş MB, Öztürk B, Taşkın E et al. (2021). Current status (as of end of 2020) of marine alien species in Turkey. *PLoS ONE* 16 (5): e0251086. <https://doi.org/10.1371/journal.pone.0251086>
- Çulha M, Sezgin, M (2019). New record for the mollusca fauna of the Black Sea coast (Sinop Peninsula) of Turkey: white belted shell, *Tornus subcarinatus* (Montagu, 1803), (Gastropoda, Tornidae). *Indian Journal of Geo Marine Sciences* 48 (10): 1503-1507.
- Dantart L, Luque AA (1994). Cocculiniformia and Lepetidae (Gastropoda: Archaeogastropoda) from Iberian waters. *Journal of Molluscan Studies* 60 (3): 277-313. <https://doi.org/10.1093/mollus/60.3.277>
- Demir M (2003). Shells of Mollusca collected from the seas of Turkey. *Turkish Journal of Zoology* 27: 101-140.
- Doğan A, Öztürk B, Bitlis-Bakir B, Türkçü N (2016). Soft Bottom Molluscan Assemblages of the Bathyal Zone of the Sea of Marmara. *Mediterranean Marine Science* 17 (3): 678-691. <https://dx.doi.org/10.12681/mms.1748>
- Forsskål P (1775). *Descriptiones animalium avium, amphibiorum, piscium, insectorum, vermium; quae in itinere orientali observatit Petrus Forskal. Post mortem auctoris edidit Carsten Niebuhr Adjuncta est materia medica Kahirina atque tabula maris rubri geographica.* Copenhagen, Denmark (in Latin).
- Galanidi M, Aissi M, Ali M, Bakalem A, Bariche M et al. (2023). Validated Inventories of Non-Indigenous Species (NIS) for the Mediterranean Sea as Tools for Regional Policy and Patterns of NIS Spread. *Diversity* 15 (9): 962. <https://doi.org/10.3390/d15090962>
- Garzia M, Furfaro G, Renda W, Rosati AM, Mariottini P et al. (2022). Mediterranean spreading of the bicolor purse oyster, *Isognomon bicolor*, and the chicken trigger, *Malleus* sp., vs. the Lessepsian prejudice. *Mediterranean Marine Science* 23 (4):777-788. <https://doi.org/10.12681/mms.29218>
- Giannuzzi-Savelli R, Pusateri F, Bartolini S (2018). A revision of the Mediterranean Raphitomidae (Gastropoda: Conoidea) 5: loss of planktotrophy and pairs of species, with the description of four new species. *Bollettino Malacologico* 54 (suppl. 1): 1-77.
- Giannuzzi-Savelli R, Pusateri F, Bartolini S (2019). A revision of the Mediterranean Raphitomidae, 8: on two poorly known species of *Raphitoma* Bellardi, 1847: *R. pumila* (Monterosato, 1890) and *R. hispidella* nomen novum (Gastropoda Conoidea). *Biodiversity Journal* 10: 57-66. <https://doi.org/10.31396/Biodiv.Jour.2019.10.1.57.66>



- Golestani H, Crocetta F, Padula V, Camacho Y, Langeneck J et al. (2019). The little *Aplysia* is coming of age: from one species to a complex of species complexes in *Aplysia parvula* (Mollusca: Gastropoda: Heterobranchia). *Zoological Journal of the Linnean Society* 187 (2): 279-330. <https://doi.org/10.1093/zoolinnean/zlz028/5509942>
- Gökoğlu M, Teker S, Korun J (2021). Occurrence of the *Histioteuthis reversa* (Verrill 1880), (Cephalopoda/Histioteuthidae) in the Gulf of Mersin/ Turkey. *Acta Aquatica* 8 (2): 109-111.
- Gözler A, Ağırbaş E, Aytan Ü (2015). Occurrence of *Acanthochitona crinita* (Pennant, 1777) (Mollusca: Polyplacophora) from the Black Sea Coast of Turkey. 1<sup>st</sup> International Conference on Sea and Coastal Development in the Frame of Sustainability, Macodesu, 18-20 September 2015, Rize, Turkey. 169-173.
- Gündoğdu S, Çevik C, Karaca S (2017). Fouling assemblage of benthic plastic debris collected from Mersin Bay, NE Levantine coast of Turkey. *Marine Pollution Bulletin*. <http://dx.doi.org/10.1016/j.marpolbul.2017.07.023>
- Kabasakal H, Karhan U, Kabasakal E (2005). On a collection of Turridae (Gastropoda: Prosobranchia) from Turkish waters. *Nachrichtenblatt der Ersten Vorarlberger Malakologischen Gesellschaft* 13: 67-73.
- Karhan SÜ, Kalkan E, Yokes MB, Balkis H, Dalyan C (2010). On a collection of opisthobranchs (Mollusca, Gastropoda) from the Levantine coast of Turkey. *Rapports de la Commission Internationale pour L'Exploration Scientifique de la Mer Méditerranée*: 39.
- Kowalevsky A (1901). Les Hédyliés. Etude anatomique. *Mémoires de l'Académie Impériale des Sciences de Saint-Pétersbourg*. 12 (6): 1-32 (in French).
- Kurt-Şahin G, Sezgin S, Ünlüer F, Öztürk B, Cavdar E et al. (2017). Macrozoobenthic community structure of İğneada region in Turkey (the southwestern Black Sea). *Oceanological and Hydrobiological Studies* 46 (3): 340-349. <https://dx.doi.org/10.1515/ohs-2017-0035>
- Manousis T, Tisseli M, Galinou-Mitsoudi S (2022). Description of *Odostomia widmeri* spec. nov. (Mollusca, Gastropoda, Pyramidellidae) from the Eastern Mediterranean Sea. *Xenophora Taxonomy* 36: 69-72.
- Micali P, Bogi C, Galil BS (2016). On the occurrence of *Atys angustatus* E. A. Smith, 1872 and *Atys macandrewii* E. A. Smith, 1872 (Cephalaspidea: Haminoeidae) in the Mediterranean Sea. *Iberus* 34 (1): 49-53.
- Mifsud C, Ovalis P (2019). Two new species of *Sticteulima* Laseron, 1955 (Gastropoda: Eulimidae) from Turkey, eastern Mediterranean. *Bollettino Malacologico* 55 (1): 68-71.
- Montesanto F, Albano M, Ayas D, Betti F, Capillo G et al. (2022). New records of rare species in the Mediterranean Sea. *Mediterranean Marine Science* 23 (4): 968-994. <https://doi.org/10.12681/mms.32369>
- Nikitin VN (1948). Biocenotic groups and quantitative distribution of benthic fauna in the eastern part of the southern shores of the Black Sea. *Proceedings of the Sevastopol Biological Station* 6: 256-273 (in Russian).
- Nofroni I, Renda W, Vannozi A (2022). Mingled in the crowd: A new *Megastomia* from eastern Mediterranean Sea (Gastropoda: Pyramidellidae). *Bollettino Malacologico* 58: 151-159. <https://doi.org/10.53559/BollMalacol.2022.16>
- Orfanidis S, Alvito A, Azzurro E, Badreddine A, Ben Souissi J et al. (2021). New Alien Mediterranean Biodiversity Records. *Mediterranean Marine Science* 22 (1):180-198. <https://doi.org/10.12681/mms.25294>
- Ostroumoff A (1894). K Estestvennoi istorii Bosfora. Prilojenie k LXXIV-my Tomu Zapisk Imper. Akademii Nauk p. 5 (in Russian).
- Ovalis P, Mifsud P (2017). A new species of *Turbonilla* (Risso, 1826) from SE Turkey. *Triton* 35: 1-4.
- Ovalis P, Mifsud C (2019). *Circulus octoliratus* (Carpenter, 1856) and *Phosinella digera* (Laseron, 1956): two new non-indigenous gastropod species for the Mediterranean Sea. *Iberus* 37 (2): 267-270.
- Örstan A, Ovalis P (2023). Two Rare Marine Gastropods from the Shores of Phaselis (Gulf of Antalya). *Phaselis* 9:1-3. <https://doi.org/10.5281/zenodo.7502985>
- Örstan A, Ovalis P (2024). Range extension of *Coriophora lessepsiana* Albano, Bakker & Sabelli, 2021 in the Mediterranean: first record from the southern coast of Türkiye. *Xenophora Taxonomy* 43: 37-38.
- Özalp HB, Ovalis P, Çulha M (2021). Occurrence of two non-indigenous alien sea slugs, *Bursatella leachii* (Blainville, 1817) and *Melibe viridis* (Kelaart, 1858) (Gastropoda: Heterobranchia), from the Çanakale Strait, Turkish straits system. *Acta Zoologica Bulgarica* 73 (4): 629-632.
- Öztürk B (2021). *Mangelia* (Gastropoda, Conoidea) species of the Turkish coasts with description of *Mangelia vanaartseni* sp. nov. *Zootaxa* 4933 (2): 241-262. <https://doi.org/10.11646/zootaxa.4933.2.4>
- Öztürk B, Bitlis Bakır B, Micali P (2013). Heterostropha Species of the Turkish Coasts: Odostomiinae Pelseneer, 1928 (Gastropoda, Heterobranchia, Pyramidellidae). *Turkish Journal of Fisheries and Aquatic Sciences* 13: 139-157. [https://doi.org/10.4194/1303-2712-v13\\_1\\_18](https://doi.org/10.4194/1303-2712-v13_1_18)
- Öztürk B, Bitlis B, Doğan A, Türkçü N (2017). Alien Marine Molluscs along the Turkish Coast, with a New Record of *Varicopeza pauxilla* (A. Adams, 1855) (Mollusca: Gastropoda) from the Mediterranean Sea. *Acta Zoologica Bulgarica*, suppl. 9: 83-92.
- Öztürk B, Çevik C (2000). Mollusc fauna of Turkish seas. *Club Conchylia Informationen* 32: 27-53.
- Öztürk B, Doğan A, Bitlis-Bakır B, Salman A (2014). Marine molluscs of the Turkish coasts: an updated checklist. *Turkish Journal of Zoology* 38: 832-879. <https://doi.org/10.3906/zoo-1405-78>
- Öztürk B, Geyran K (2020). *Raphitoma* (Gastropoda: Conoidea: Raphitomidae) Species Distributed Along the Turkish Coasts. *Turkish Journal of Fisheries and Aquatic Science* 20 (6): 431-451. [https://doi.org/10.4194/1303-2712-v20\\_6\\_03](https://doi.org/10.4194/1303-2712-v20_6_03)

- Öztürk, B, Bitlis B, Türkçü N (2023a). *Circulus* (Mollusca-Gastropoda) species of the Turkish coasts with a note on the presence of *Circulus octoliratus* (Carpenter, 1856). Ege Journal of Fisheries and Aquatic Sciences 40 (1): 77-80. <https://doi.org/10.12714/egejfas.40.1.11>
- Öztürk B, Ovalis P (2024). *Bela* Leach, 1847 (Gastropoda Conoidea) species distributed along the Turkish coasts and in the Saronic Gulf (Greece) with description of *Bela filioae* n. sp. Biodiversity Journal 15 (1): 85-103. <https://doi.org/10.31396/Biodiv.Jour.2024.15.1.85.103>
- Öztürk B, Recevik M (2023). First record of alien gastropods *Epitonium aranea* Bonfitto, 2018 and *Stosicia annulata* (Dunker, 1860) (Mollusca) from the Mediterranean Sea. Ege Journal of Fisheries and Aquatic Sciences 40 (4): 298-303. <http://doi.org/10.12714/egejfas.40.4.09>
- Öztürk B, Recevik M, Geyran K (2015). New alien Molluscs in the Mediterranean Sea. Cahiers de Biologie Marine 56: 205-212.
- Öztürk B, Türkçü N, Bitlis B (2023b). New records of gastropods (Caenogastropoda and Heterobranchia) from the Turkish coasts with observations on some poorly known species. Turkish Journal of Zoology 47: 135-146. <https://doi.org/10.55730/1300-0179.3125>
- Pusateri F, Giannuzzi-Savelli R, Bartolini S (2018). A revision of the Mediterranean Raphitomidae (Gastropoda Conoidea), 6: on the *Raphitoma corbis* (Potiez et Michaud, 1838). Biodiversity Journal 9 (3): 217-225.
- Pusateri P, Giannuzzi Savelli R, Stahlschmidt P (2017). Description of a new species of the genus *Raphitoma* Bellardi, 1847 from the Mediterranean Sea (Mollusca Neogastropoda Conoidea Raphitomidae). Biodiversity Journal 8 (1): 205-210. <https://doi.org/10.31396/Biodiv.Jour.2018.9.3.217.225>
- Renda W, Amati B, Bogi C, Bonomolo G, Capua D et al (2022). The new checklist of the Italian Fauna: marine Mollusca. Biogeographia 37: ucl005. <https://doi.org/10.21426/B637156028>
- Salman A, Akalın S, Ünlüoğlu A, Aydın CM (2023). A checklist and some new records on the teuthofauna of Türkiye in the Northeastern Mediterranean Sea. Ege Journal of Fisheries and Aquatic Sciences 40 (3): 189-194. <https://doi.org/10.12714/egejfas.40.03.05>
- Saraçoğlu C, Topçu NE (2023). The Sea Slug *Tethys fimbria* Linnaeus, 1767 (Nudibranchia: Tethydidae) Expands its Distribution Northwards to the Sea of Marmara. Aquatic Sciences and Engineering 38 (4): 232-235. <https://doi.org/10.26650/ASE20231284630>
- Spada G, Sabelli B, Giannuzzi-Savelli R (2023). *Mangelia* Risso, 1826 and allied genera in the Mediterranean with the description of a new genus and three new species (Gastropoda: Mangeliidae). Bollettino Malacologico 59: 1-53. <https://doi.org/10.53559/BollMalacol.2022.06>
- Stamouli C, Akel EHK, Azzurro E, Bakiu R, Bas AA et al. (2017). New Mediterranean Biodiversity Records. Mediterranean Marine Science 18 (3): 534-556. <https://doi.org/10.12681/mms.15823>
- Storsberg J, Ovalis P (2021). Another Indo-Pacific species enters the Turkish Mediterranean coast: first record of a zebinid, *Pandalosia subfirmata* (Boettger, 1887) (Gastropoda: Zebinidae). Miscellanea Malacologica 9 (1): 11-12.
- Storsberg J, Ovalis P (2022). A second species of the genus *Pandalosia* in the Eastern Mediterranean Sea: first record of *P. ephamilla* (R. B. Watson, 1886) (Gastropoda: Zebinidae). Miscellanea Malacologica 9 (2): 23-24.
- Tiralongo F, Akyol O, Al Mabruk S A, Battaglia P, Beton D et al. (2022). New Alien Mediterranean Biodiversity Records. Mediterranean Marine Science 23 (3): 725-747. <https://doi.org/10.12681/mms.31228>
- Tsagarakis K, Darmanin SA, Al Mabruk SA, Auriemma R, Azzurro E, et al. (2021). New records of rare species in the Mediterranean Sea. Mediterranean Marine Science 22 (3): 627-652. <https://doi.org/10.12681/mms.26669>
- Tunçer S, Artüz ML, Önal U (2016). First Record of *Armina neapolitana* (Delle Chiaje, 1824) (Gastropoda: Heterobranchia) in the Sea of Marmara (Turkey). Cahiers de Biologie Marine 57: 183-185.
- Türker A, Yalçın F, Yapıcı S (2020). Addition to the Distribution of Opisthobranchia in the Turkish Aegean Coasts. Muğla Journal of Science and Technology 6 (1): 27-31. <https://doi.org/10.22531/muglajsci.618588>
- Ulman A, Ferrario J, Occhpinti-Ambrogi A, Arvanitidis C, Bandi A et al. (2017). A massive update of non-indigenous species records in Mediterranean marinas. PeerJ 5: e3954. <https://doi.org/10.7717/peerj.3954>
- Yokeş MB (2009). Addition to the knowledge of Opisthobranchia from Turkey. Triton 20: 5-19.
- Yokeş M, Andreou V, Bakiu, R, Bonanomi S, Camps J, et al. (2018). New Mediterranean Biodiversity Records. Mediterranean Marine Science 19 (3): 673-689. <https://doi.org/10.12681/mms.19386>
- Yumun ZU, Meric E, Barut IF, Nazik A, Avsar N et al. (2017). Determination of Dil Stream Contamination by Benthic Foraminifera and Molluscs in Bayramoğlu Coasts Tuzla-Istanbul, Turkey). Fresenius Environmental Bulletin 26 (5): 3325-3339.
- Zenetos A, Albano PG, Lopez Garcia E, Stern N, Tsiamis K et al. (2022). Established non-indigenous species increased by 40% in 11 years in the Mediterranean Sea. Mediterranean Marine Science 23 (1): 196-212. <https://doi.org/10.12681/mms.29106>
- Zenetos A, Gofas S, Morri C, Rosso A, Violanti D, et al. (2012). Alien species in the Mediterranean Sea by 2012. A contribution to the application of the European Union's Marine strategy framework directive (MSFD). Part 2. Introduction trends and pathways. Mediterranean Marine Science 13 (2): 328-352.