

1-1-2011

## Proteomic changes during boron tolerance in barley(*Hordeum vulgare*) and the role of vacuolar proton-translocating ATPase subunit E

AHMET EMİN ATİK

GÖNENSİN OZAN BOZDAĞ


ERSİN AKINCI

ALAATTİN KAYA

AHMET KOÇ

*See next page for additional authors*

Follow this and additional works at: <https://dctubitak.researchcommons.org/botany>

 Part of the [Botany Commons](#)

---

### Recommended Citation

ATİK, AHMET EMİN; BOZDAĞ, GÖNENSİN OZAN; AKINCI, ERSİN; KAYA, ALAATTİN; KOÇ, AHMET; YALÇIN, TALAT; and KARAKAYA, HÜSEYİN ÇAĞLAR (2011) "Proteomic changes during boron tolerance in barley(*Hordeum vulgare*) and the role of vacuolar proton-translocating ATPase subunit E," *Turkish Journal of Botany*. Vol. 35: No. 4, Article 8. <https://doi.org/10.3906/bot-1007-29>  
Available at: <https://dctubitak.researchcommons.org/botany/vol35/iss4/8>

This Article is brought to you for free and open access by TÜBİTAK Academic Journals. It has been accepted for inclusion in Turkish Journal of Botany by an authorized editor of TÜBİTAK Academic Journals.

---

## Proteomic changes during boron tolerance in barley(*Hordeum vulgare*) and the role of vacuolar proton-translocating ATPase subunit E

### Authors

AHMET EMİN ATİK, GÖNENSİN OZAN BOZDAĞ, ERSİN AKINCI, ALAATTİN KAYA, AHMET KOÇ, TALAT YALÇIN, and HÜSEYİN ÇAĞLAR KARAKAYA

## Proteomic changes during boron tolerance in barley (*Hordeum vulgare*) and the role of vacuolar proton-translocating ATPase subunit E

Ahmet Emin ATİK<sup>1</sup>, Gönensin Ozan BOZDAĞ<sup>2</sup>, Ersin AKINCI<sup>2</sup>, Alaattin KAYA<sup>2</sup>,  
Ahmet KOÇ<sup>2</sup>, Talat YALÇIN<sup>1</sup>, Hüseyin Çağlar KARAKAYA<sup>2,\*</sup>

<sup>1</sup>İzmir Institute of Technology, Department of Chemistry, 35430 Urla, İzmir - TURKEY

<sup>2</sup>İzmir Institute of Technology, Department of Molecular Biology & Genetics, 35430 Urla, İzmir - TURKEY

Received: 16.07.2010

Accepted: 08.12.2010

**Abstract:** Boron is an essential micronutrient for plants and animals; however, it can be toxic when present at high concentrations. The purpose of this study was to understand the mechanisms of boron tolerance in the Turkish barley (*Hordeum vulgare*) Anadolu cultivar. For this purpose, 2-dimensional electrophoresis (2-DE) was used to screen differentially expressed proteins for both control and boron-stressed Anadolu barley genotypes. Seven proteins were revealed by 2-DE: 1) ribulose 1,5-bisphosphate carboxylase/oxygenase (RuBisCo large chain), 2) TLP5, a thaumatin-like protein, 3) PR5, a basic pathogenesis-related protein, 4) a RNase S-like protein, 5) a PSI type III chlorophyll a/b-binding protein, 6) a light-harvesting complex I LHC I, and 7) the vacuolar proton-translocating ATPase subunit E protein. These were found to be upregulated in response to boron treatment. Even though the protein encoded by the V-ATPase subunit E gene was overexpressed, its transcript level was downregulated by boron treatment. Heterologous expression of the barley V-ATPase subunit E gene in yeast provided boron resistance to yeast cells. These results indicated that the V-ATPase subunit E gene was functional and conferred tolerance to toxic boron levels in yeast and might play a role in the overall boron tolerance of barley.

**Key words:** Boron stress, *Hordeum vulgare*, *Saccharomyces cerevisiae*, proteomics, V-ATPase

### Boron toleransı sırasında arpada (*Hordeum vulgare*) görülen proteomik değişimler ve vakuol proton translokasyon ATPaz alt birim E'nin rolü

**Özet:** Bor, bitkiler ve hayvanlar için gerekli olan mikroelementlerdendir. Ancak yüksek konsantrasyonlarda toksik etki göstermektedir. Bu çalışmada bora dayanıklı Anadolu arpa (*Hordeum vulgare*) genotipindeki bor tolerans mekanizmasının anlaşılması amaçlanmıştır. Kontrol ve bor stresi uygulanmış ve Anadolu genotipi arasındaki farklı seviyede ekspres olan proteinleri taramak için 2 boyutlu elektroforez tekniği uygulanmıştır. İki boyutlu elektroforez deneyi sonucu ekspresyon seviyesi artan yedi protein bulunmuştur: ribuloz 1,5-bifosfat karboksilaz/oksijenaz büyük zincir, thaumatin benzeri protein TLP5, patojenez benzeri protein PR5, RNaz S benzeri protein, PSI tipi III a/b-bağlayıcı protein, ışık toplayan kompleks protein I LHC I ve vakuol proton translokasyon ATPaz alt birim E. V-ATPaz alt birim E geni tarafından kodlanan proteinin seviyesinin bor uygulaması ile artmasına rağmen, genin transkript

\* E-mail: caglarkarakaya@iyte.edu.tr

seviyesi azalmıştır. Arpa V-ATPaz alt birim E geninin maya hücrelerinde ifadenlenmesi maya hücrelerine bora karşı dayanıklılık sağlamıştır. Bu sonuçlar, V-ATPaz alt birim E geninin mayada fonksiyonel olduğunu ve maya hücrelerine, toksik bor seviyelerine karşı dayanıklılık sağladığını ve de arpada bor toleransında bir rolü olabileceğini göstermektedir.

**Anahtar sözcükler:** Bor stresi, *Hordeum vulgare*, *Saccharomyces cerevisiae*, proteomik, V-ATPaz

## Introduction

Boron is an essential micronutrient for both plants and animals. Despite its essentiality for higher plants, high boron concentrations in soil limit crop production all over the world (Sutton et al., 2007). In that context, understanding boron toxicity mechanisms and identifying boron tolerance genes in crop species is very important. Boron functions as a cross-linker for rhamnogalacturonan-II in the cell membrane (Kobayashi et al., 1996; Ishii et al., 1999; O'Neill et al., 2004) and also as a structural component in cytoskeleton assembly in plants (Bassil et al., 2004). Recent studies have shown the presence of several genes associated with boron transport and tolerance in plants (Takano et al., 2002; Miwa et al., 2007; Sutton et al., 2007). *Arabidopsis thaliana* *BOR1* was the first gene shown to play a role in boron tolerance and it has 6 paralogs (*BOR2* to *BOR7*) (Takano et al., 2002). Since the identification of *BOR1*, similar boron transport proteins have been identified in rice (*Oryza sativa*), wheat, and barley (Nakagawa et al., 2007; Reid, 2007; Sutton et al., 2007). Homologs of *BOR1* are found to be present in many organisms including yeast, plants, and humans (Nakagawa et al., 2007; Sutton et al., 2007; Takano et al., 2007).

High levels of boron lead to degradation of its own exporter, Bor1, in *Arabidopsis thaliana* (Miwa et al., 2007) but degradation of *BOR1*-GFP is inhibited by concamycin A, which is a specific V-ATPase inhibitor (Takano et al., 2005). Thus AtBor1 cannot be used to produce genetically modified plants that can grow where boron toxicity in soil is a problem. However, transgenic plants expressing *BOR4*, one of the 6 paralogs of *BOR1*, showed a high tolerance to toxic levels of boron (Miwa et al., 2007). Multicopies of *BOT1*, a *BOR1* ortholog, could also provide boron-toxicity tolerance in barley (Sutton et al., 2007).

The yeast *Saccharomyces cerevisiae* has been used as model organism for the characterisation of plant boron tolerance genes (Nozawa et al., 2006;

Takano et al., 2006; Sutton et al., 2007; Takano et al., 2007). Barley Bot1 has been shown to provide boron tolerance using yeast as a model (Sutton et al., 2007). Additionally, different *Arabidopsis thaliana* cDNAs that are related to boron tolerance have been monitored in yeast cells (Nozawa et al., 2006). Yeast can grow under very high concentrations of boron and is considered to be a highly boron-tolerant organism (Nozawa et al., 2006). The yeast *BOR1* gene was characterized in detail. It is localised to the plasma membrane and functions as a boric acid exporter across the cell membrane. The  $\Delta bor1$  (bor1 deletion mutant) yeast strain overaccumulates boron inside its cells (Takano et al., 2002). Cells that overexpress *BOR1* have lower intracellular boron and show resistance to boron treatment (Nozawa et al., 2006; Jennings et al., 2007). In addition to *BOR1*, 2 other yeast transporter genes, *DUR3* and *FPS1*, seem to play a role in boron tolerance, but their significance is not clear. Overexpression of *FPS1* and *DUR3* has controversial effects on cellular boron levels; while *FPS1* expression lowers the protoplasmic boron concentrations, *DUR3* expression leads to a small increase (Nozawa et al., 2006). Recently, another yeast boron transporter gene *ATR1* (YML116w) has been reported to be the strongest yeast boron transporter (Kaya et al., 2009). *ATR1* is localized in cell membranes and vacuoles and *atr1* $\Delta$  cells have been shown to be more sensitive to boric acid than previously identified yeast boron transporter mutants (Kaya et al., 2009).

V-ATPases are proton pumps located in endosomes, lysosomes, golgi, and vacuoles which maintain acidification of organelles (Nishi & Forgac, 2002). Eukaryotic V-ATPases are structurally and functionally highly conserved pumps in mammals, plants, and yeast. V-ATPase is composed of 2 domains, an integral membrane domain V0 and a membrane-bound domain V1 (Wilkens et al., 1999; Sze et al., 2002). The function of V-ATPase subunit E has not been defined in plants, but mutational

analysis from yeast suggests that the V1 and V0 sectors of the V-ATPase are assembled by subunit E.

Genetic variation for boron tolerance is expressed through different mechanisms in different barley genotypes. Sahara, one of the boron-tolerant barley genotypes, accumulates less boron in leaf blades due to a mechanism of active boron efflux from the root (Sutton et al., 2007). In contrast to Sahara, the Turkish boron-tolerant barley genotype Anadolu accumulates the same amount of boron in its leaf tissue as a boron-sensitive barley genotype, indicating it has a different mechanism responsible for boron tolerance (Torun et al., 2003).

The aim of this study was to understand the boron tolerance mechanisms in the boron-tolerant Turkish barley Anadolu cultivar. Using a proteomic approach, we demonstrated several differentially expressed proteins upregulated after boron treatment in the Anadolu genotype. One protein, vacuolar proton-translocating ATPase (V-ATPase) subunit E, is overexpressed in yeast and provides boron tolerance.

## Materials and methods

### *Plant growth and proteomic analysis*

Turkish boron-tolerant barley genotype (*Hordeum vulgare* L. cv. Anadolu) and boron-sensitive barley genotype (*Hordeum vulgare* L. cv. Hamidiye) seeds were used. Seeds were surface-sterilized with 5% sodium hypochlorite and grown in Hoagland's solution for 5 days under controlled environmental conditions ( $23 \pm 2$  °C with 16-h light/8-h dark photoperiods at a light intensity of  $40 \mu\text{mol m}^{-2} \text{s}^{-1}$ , and with 60%-80% relative humidity). Boric acid was applied at a final concentration of 10 mM for an additional 4 days. At the end of the growing period, the control and treated barley leaves were harvested, immediately frozen in liquid nitrogen and stored at  $-80$  °C until the protein and RNA extraction steps.

The protein extraction was performed with 3 g of leaf sample using the TRIzol® (phenol/guanidine isothiocyanate) reagent (Kirkland et al., 2006). Next, the protein pellet was vacuum-dried in a centrifuge evaporator. The resultant pellet was then dissolved in a rehydration-solubilisation buffer consisting of 7 M urea, 2 M thiourea, 4% (w/v) CHAPS, 65 mM DTT, and 2.5% (v/v) ampholyte (pH 3-10) followed

by centrifugation at  $8000 \times g$  for 10 min at 4 °C. The protein-containing supernatant was either used for 2-DE or stored in  $-80$  °C for further use. The total protein concentration was determined by the Bradford method using bovine serum albumin (BSA) as the standard.

The protein samples (500  $\mu\text{g}$ ) were diluted in a final volume of 330  $\mu\text{L}$  of rehydration buffer and 300  $\mu\text{L}$  of each sample was applied onto IPG strips (pH 3-10 non-linear, 17 cm). Rehydration for transferring proteins onto the strips was done at 50 V for 15 h using Bio-Rad's IEF system (Bio-Rad Protean IEF Cell) with subsequent isoelectric focusing at 20 °C under mineral oil for 56 kVh (0-500 V 2000 Vh, 500 V 2000 Vh, 500-3500 V 12 kVh, 3500 V 40 kVh). Prior to SDS polyacrylamide gel electrophoresis, the strips were equilibrated in 6M urea, 0.375 M Tris-HCl pH 8.8, 2% SDS, 20% glycerol with DTT 2% for 15 min and with iodoacetamide 2.5% for the alkylation of the reduced sulphhydryl groups for another 15 min. Electrophoresis was carried out at 220 V for 6 h (Bio-Rad Protean II xi Cell). Gels were stained with colloidal Coomassie Brilliant Blue. Three replicates of the 2-DE gels were analysed and replicate spots in 3 gels were excised and subjected to overnight in-gel digestion with trypsin. Samples were desalted using Ziptip (Millipore) before running. Finally, peptides that were isolated from the digested proteins were identified using Mass spectrometry / Mass spectrometry (MS/MS) spectra. A LTQ XL linear ion-trap mass spectrometer (Thermo Finnigan, San Jose, CA, USA), equipped with an electrospray ionisation (ESI) source, and a hybrid triple quadrupole/linear ion trap 4000 Q-TRAP instrument (Applied Biosystems/MDS Sciex, Ontario, Canada), equipped with a turbo ion spray source, were used for the MS/MS study. The Mascot search engine (Matrix Science, London, UK) with the NCBI nr protein database (National Center for Biotechnology Information, Bethesda, MD, USA) were used to sequence protein spots.

### *Gene expression analysis*

To both the Anadolu and Hamidiye cultivars 10 mM of boric acid stress was applied for 4 days as described in the proteomic experiments. Total RNA from the samples was isolated using the RNeasy Mini Kit (Qiagen). Traces of genomic DNA were removed by DNase treatment (DNase RQ1, Promega). cDNA

synthesis was performed using the First Strand cDNA Synthesis Kit (Fermentas) according to the manufacturer's instructions. The cDNA was used as template to amplify a 159 bp fragment for V-ATPase subunit E gene and a 524 bp fragment for the internal control barley *GPD* gene. Maxima™ SYBR Green qPCR Master Mix was used (Fermentas, Germany) to perform the Quantitative Real Time PCR (Q-RT-PCR) assays. Three independent experiments were performed for the Q-RT-PCR assays with the Bio-Rad iQ5 Real-Time PCR system. The amounts of RNA in each reaction normalised the barley *GPD* gene. Q-RT-PCR data analysis was performed with Bio-Rad iQ5 software using Pfaffl's model (Pfaffl 2001). Primers used for the amplification of HvATPase subunit E (accession number U84268) were VATPRTF-TATCAAAGTGCTTCAGGCCAGGA and VATPRTR-AGTACAGCTGGCTCTTTCAACCGA, and for the amplification of the barley *GPD* gene were HGPDRTF-TGAGGGTTTGATGACC ACTGTCCA and HGPDRTF-CCGTTAAGTTCTGGGAGCACC TT. The conditions for PCR amplification were as follows: 95 °C for 5 min, 40 cycles at 94 °C for 25 s, 60 °C for 25 s, and 72 °C for 30 s.

#### **Overexpression of the barley V-ATPase subunit E gene in yeast**

The V-ATPase subunit E gene was amplified by Pfu polymerase (Fermentas) from barley cDNA using primers VATPEF-AGGATCCATGAACGACACCGATGTCTC CAGGC and VATPER- ACTCGAGTTATGCCGCA ACAAGAAGCTTTCGG containing BamHI and XhoI restriction sites respectively. The amplified fragment was first cloned into the SmaI site of pBS II KS (Stratagene) and then moved into BamHI/XhoI sites of yeast high copy expression vector p426GPD to make p426- V-ATPase subE. We used *Saccharomyces cerevisiae* strains with a BY4741 background (MAT $\alpha$  *his3 leu2 met15 ura3*). YPD media (2% glucose, 2% peptone, 1% yeast extract, and 2% agar for solid media) or YNB media supplemented with required amino acids or bases were used to grow the cells. For the solid media growth assays, wild type yeast cells were transformed with either empty vector p426GPD or V-ATPase subunit E cDNA containing p426GPD over-expression vector, using the lithium acetate (LiAc) method (Gietz & Schiestl, 1995). Yeast cells

(shaken at 200 rpm, at 30 °C) that had been incubated overnight were diluted to OD<sub>600</sub> = 0.2 with distilled water and 5  $\mu$ L of these cultures were transferred to spots on solid YNB (-ura; 2% glucose at pH = 6) plates without boric acid or with 90 mM boric acid. The cells were incubated for 5 days at 30 °C and the plates were photographed.

#### **Results**

A proteomic approach was used to identify proteins that were overexpressed by boron stress in the Anadolu barley cultivar, which is known to be tolerant of high levels of boron in soil. Mass spectrometry analysis and database searching helped to identify 9 spots representing 7 different proteins (3 spots were identified as the same protein). The 7 identified proteins are namely, ribulose 1,5-bisphosphate carboxylase/oxygenase large chain (RuBisCo large chain), a thaumatin-like protein TLP5, a basic pathogenesis related protein PR5, a RNase S-like protein, vacuolar proton-translocating ATPase subunit E, a PSI type III chlorophyll a/b-binding protein, and a light-harvesting complex I LHC I (Figures 1-2, Table). From among these proteins, *Hordeum vulgare* V-ATPase subunit E was identified as a boron-responsive protein by MS/MS spectra (with 38% sequence coverage, MW 26.2kDa / pI 6.57, accession number 4099148).

Since the V-ATPase subunit E protein was identified as one of the boron-regulated proteins using mass spectrometry, further experiments were carried out to see whether V-ATPase subunit E mRNA levels are regulated by boron treatment. The amount of V-ATPase subunit E mRNA in leaves dramatically decreased by 0.6-fold after 1 day of boron treatment and continued to decrease by approximately 0.8-fold for the rest of the treatment period (Figure 3). In the roots of samples treated with boron, V-ATPase subunit E mRNA levels showed a dynamic regulation with 0.4-fold upregulation on the 1st and 4th days and 0.2-fold downregulation on the 2nd day.

Since Anadolu is a boron-tolerant cultivar of Turkish barley, we wanted to compare the expression levels of V-ATPase subunit E between it and the boron-sensitive barley cultivar Hamidiye under boron stress. After 10 mM of boron treatment for 4

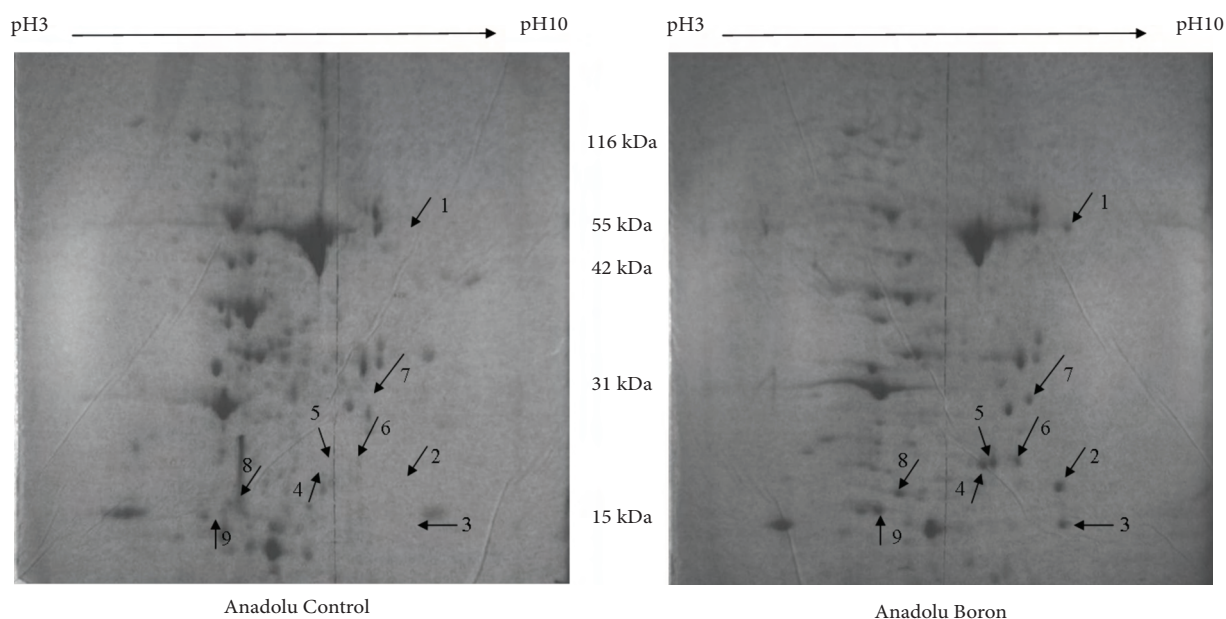


Figure 1. Proteome map of leaves of control and boron-stressed *Hordeum vulgare* from the Anadolu cultivar at 7 days of 10mM boron treatment. Differentially expressed protein spots are indicated with arrows.

days, V-ATPase subunit E mRNA levels decreased in both Anadolu and Hamidiye leaves (Figure 4). However, when we compared the native expression level of V-ATPase subunit E in control samples, the Anadolu control sample showed a 6-fold higher level than that of the Hamidiye control. Constitutively high expressions of subunit E in Anadolu barley might play a role in its boron tolerance.

The yeast *Saccharomyces cerevisiae* has been used extensively to elucidate plant boron tolerance genes. As seen in Figure 5, yeast cells carrying the empty vector (p426GPD) were not able to grow in the presence of 90 mM boron, but cells containing p426GPD-V-ATPase subunit E provided boron resistance and were able to grow in 90 mM boron which is a toxic level for yeast. Thus, the V-ATPase subunit E cDNA of barley might play a role in boron tolerance.

## Discussion

After stress conditions, plants can change their gene expression and protein accumulation, causing the reduction of normal growth and development and loss of leaf area due to inhibition

of photosynthesis from a decrease of chlorophyll concentrations and CO<sub>2</sub> fixation (Terzi et al., 2010; Yang et al., 2010). After toxic boron concentration in the Anadolu barley genotype, this observation was confirmed by identification of 3 proteins that are related to the photosynthetic mechanism. These proteins are ribulose 1,5-bisphosphate carboxylase/oxygenase large chain (RuBisCo large chain), a PSI type III chlorophyll a/b-binding protein, and a light-harvesting complex ILHC I (spot 1, spot 8, and spot 9, respectively). On the other hand, the thaumatin-like protein TLP5 (spot 2) increased its protein level. Öz et al. (2009) also reported an increased mRNA level TLP5 gene in barley. The basic pathogenesis related protein PR5 (spot 3), and the RNase S-like protein (spots 4, 5, and 6) are environmental stress-related proteins that are expressed in plant leaves under several stress treatments (Shimizu et al., 2001; 2002; Sarowar et al., 2005; Patterson et al., 2007).

Plant V-ATPase is a primary-active proton pump located in the vacuolar membrane (tonoplast) and in various other components of the endomembrane system of the plant cell (Li & Zhang, 2004). Plant V-ATPase levels, subunit composition, and subunit stoichiometry vary in different types of tissues,

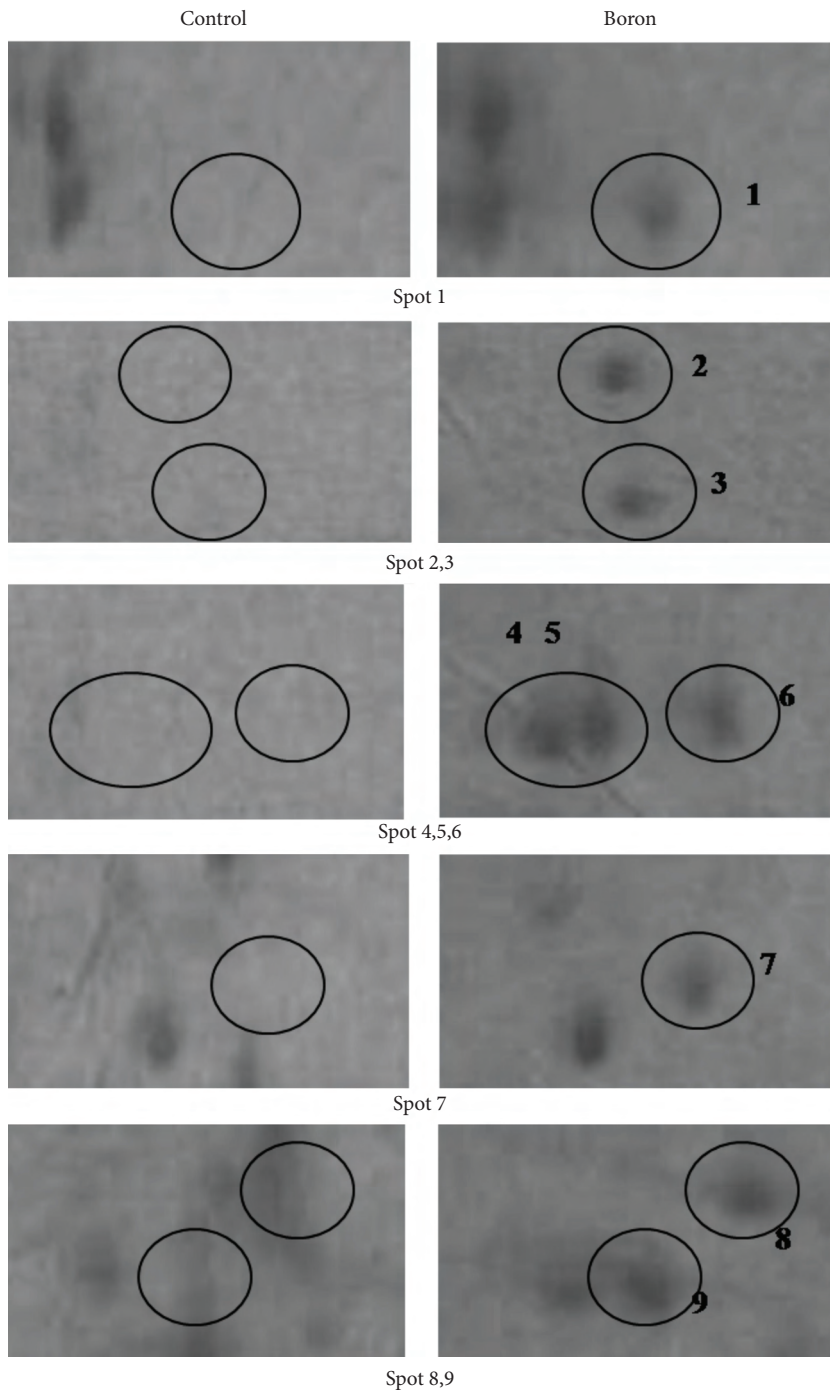


Figure 2. Segments of 2D gel showing upregulation of the proteins.

environmental stresses, and developmental states of the plants (Luttge & Ratajczak, 1997; Ratajczak, 2000; Kaya et al., 2009). The isoforms of V-ATPase subunit E have been detected in several plant species

(Kawamura et al., 2000; Kluge et al., 2003). It has also been stated that accumulation of subunit E is slightly modified by salt stress in barley (Dietz et al., 1995; Dietz & Arbing, 1996).



Table. List of proteins which are differentially upregulated after boron treatment in Anadolu barley leaves.

Spot no.	Protein identity	Accession number	Reference organism	Matched peptide	Sequence coverage (%)	MOWSE score	Theoretical MW (kDa) /pI	Experimental MW (kDa) /pI
1	Ribulose 1,5-bisphosphate carboxylase/ oxygenase large chain	14017580	<i>Triticum aestivum</i>	AGVGFKAGVKLTYYPPEYTKDIDLAAF REMTLGFVDLLRFEFEPVDTIDK	10	251	52.8/6.22	55.0/ 7.20
2	thaumatin-like protein; TLP5	56682582	<i>Hordeum vulgare</i>	LDPGQSWQLNMPAGTAGAR VSGEQPATLAEYTLGGGGR	16	103	24.9/6.04	24.0/7.00
3	basic pathogenesis-related protein; PR5	2344818	<i>Hordeum vulgare</i>	VSGQPTTLAEYTLGGGANK	8	64	25.2/6.54	20.0/7.10
4	RNase S-like protein	21954110	<i>Hordeum vulgare</i>	LYNTEHIK	3	50	27.6/ 6.58	26.0/ 6.70
5	RNase S-like protein	21954110	<i>Hordeum vulgare</i>	ADVLGALAEQGINPDYRLYNTEHIK	10	139	27.6/6.58	27.0/ 6.80
6	RNase S-like protein	21954110	<i>Hordeum vulgare</i>	ADVLGALAEQGINPDYRLYNTEHIK	10	107	27.6/6.58	27.5/6.90
7	vacuolar proton translocating ATPase (V-ATPase) Subunit E	4099148	<i>Hordeum vulgare</i>	QIQQMVRAGEISYSAEEEFIEKLQIVEA EKKEYSMLNASRVLQAQDDLVNKELY VQGLLRKEPAVLLRIVFENTVDARLLVAA	38	486	26.2/6.57	30.0/7.00
8	PSI type III chlorophyll a/b binding protein	430947	<i>Arabidopsis thaliana</i>	LQDWYNP GSMGKQYFLGLEK	7	65	29.1/8.61	23.0/6.20
9	light-harvesting complex I; LHCl	544700	<i>Hordeum vulgare</i>	KYPGGAFDPLGFSK NIYGP	8	84	24.2/8.11	21.0/6.00

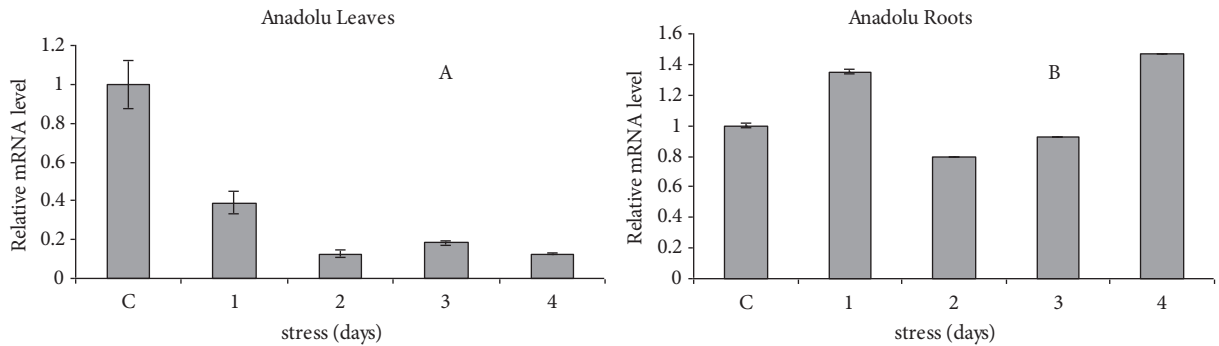


Figure 3. Expression levels of V-ATPase subunit E in Anadolu barley roots and leaves. A- mRNA levels of V-ATPase subunit E in the leaf cells after 10 mM boron treatment for 1-4 days, including a no boron treatment control (indicated as C). B- mRNA levels of V-ATPase subunit E in the Anadolu barley root cells after 10 mM boron treatment for 1-4 days, including a no boron treatment control (indicated as C). Data are the average of 3 biological replicates. Error bars represent standard errors.

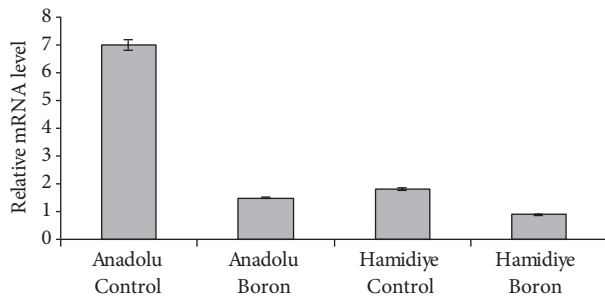


Figure 4. Expression levels of V-ATPase subunit E in Anadolu and Hamidiye barley leaves after 4 days of 10 mM boron treatment. Data are the average of 3 biological replicates. Error bars represent standard errors.

Our results show that protein levels of V-ATPase subE are upregulated under boron stress in barley. To see expression of mRNA levels of V-ATPase subE, we performed Q-RT-PCR analyses that showed that the V-ATPase subunit E gene is downregulated

by boron, suggesting a possible post-translational regulation. Hanitzsch et al. (2007) studied regulation of V-ATPase subunit isoforms in different organs of *Arabidopsis*. They reported that Western blot analysis of VHA-E isoforms showed transcript abundances not directly translated into protein abundances, suggesting translational and post-translational regulation that differs between roots and shoots. In addition, Kabała and Kłobus (2008) studied the activity of vacuolar proton transporting ATPase (V-ATPase) and vacuolar proton transporting pyrophosphatase (V-PPase) under salt stress in cucumber roots. They demonstrated that changes in enzyme activities of V-ATPase (CsVHA-A), subunit C of V-ATPase (CsVHA-c), and V-PPase (CsVP) were not correlated with mRNA expression levels of these genes after salt treatment. Such results suggest that alterations of proton pump activities under salinity are instead due to the post-translational alterations

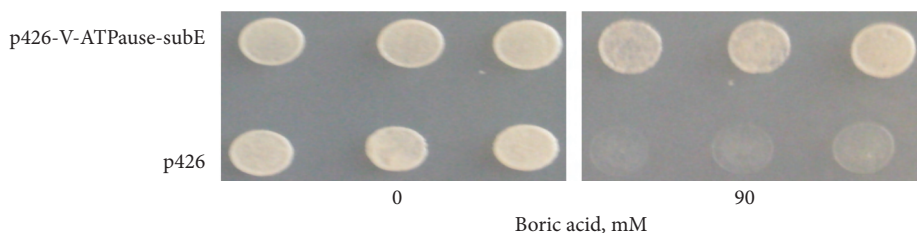


Figure 5. Boric acid tolerance of yeast cells with empty vector (p426GPD) and with V-ATPase subunit E-p426GPD. YNB plates containing no boric acid (as control) and YNB plates containing 90 mM boric acid (as stress). Plates were incubated at 30 °C for 5 days.

induced by salt. As concluded from these studies, mRNA levels of V-ATPases do not directly correlate with their protein levels under stress conditions and our expression analyses for V-ATPase subunit E are consistent with these studies.

The relationship between boron and plant cell walls has been known for several years. When boron is limited, the stability and functioning of plant cell membranes are affected (Bolaños et al., 2004; Camacho-Cristóbal et al., 2008). One of the known physiological roles of boron in plants is cross-linking of the pectin rhamnogalacturonan-II in the cell wall (Kobayashi et al., 1996; Ishii et al., 1999; O'Neill et al., 2004; Wimmer et al., 2009). Wimmer et al. (2009) isolated membrane-associated boron-interacting proteins by boronate affinity chromatography in the roots of *Arabidopsis thaliana* and *Zea mays*. One of the boron-interacting proteins they found was a V-type ATPase, a similar protein to one that was also isolated in this work.

Boron tolerance shows through different mechanisms in barley genotypes. Sahara, a boron-tolerant barley genotype, accumulates less boron

in leaf blades due to a mechanism of active boron efflux from the root (Sutton et al., 2007). However, the Turkish boron-tolerant barley genotype Anadolu accumulates the same amount of boron in leaf tissues as the boron-sensitive barley genotype Hamidiye, indicating a possible internal tolerance mechanism such as complexation of boron in cell walls or compartmentation of boron at the cellular or organ levels (Torun et al., 2003). Our analyses also showed that mRNA levels of V-ATPase subE in Anadolu barley are 6-fold higher under normal conditions than in Hamidiye. The possible role of V-ATPase subE in boron tolerance needs to be investigated further in different plant species.

### Acknowledgments

This study was supported by grants TÜBİTAK 104T213, TÜBİTAK TBAG-2354, İYTE-BAP20 and Turkish Academy of Science GEBIP. We thank the biotechnology core facility and biological mass spectrometry facility of the İzmir Institute of Technology for help with instruments.

### References

- Bassil E, Hu H & Brown PH (2004). Use of phenylboronic acids to investigate boron function in plants. Possible role of boron in transvacuolar cytoplasmic strands and cell-to-wall adhesion. *Plant Physiol* 136: 3383-95.
- Bolaños L, Lukaszewski K, Bonilla I & Blevins D (2004). Why boron? *Plant Physiol. Biochem* 42: 907-912.
- Camacho-Cristóbal JJ, Rexach J & González-Fontes A (2008). Boron in Plants: Deficiency and Toxicity. *J Integr Plant Biol* 50: 1247-1255.
- Dietz KJ & Arbinger B (1996). cDNA sequence and expression of subunit E of the vacuolar H(+)-ATPase in the inducible Crassulacean acid metabolism plant *Mesembryanthemum crystallinum*. *Biochim Biophys Acta* 1281: 134-138.
- Dietz KJ, Rudloff S, Ageorges A, Eckerskorn C, Fischer K & Arbinger B (1995). Subunit E of the vacuolar H(+)-ATPase of *Hordeum vulgare* L.: cDNA cloning, expression and immunological analysis. *Plant J* 8: 521-529.
- Gietz RD & Schiestl RH (1995). Transforming yeast with DNA. *Methods Mol Cell Biol* 5: 255-269.
- Hanitzsch M, Schnitzer D, Seidel T, Gollmack D & Dietz KJ (2007). Transcript level regulation of the vacuolar H(+)-ATPase subunit isoforms VHA-a, VHA-E and VHA-G in *Arabidopsis thaliana*. *Mol Membr Biol* 24: 507-18.
- Ishii T, Matsunaga T, Pellerin P, O'Neill MA, Darvill A & Albersheim P (1999). The plant cell wall polysaccharide rhamnogalacturonan II self-assembles into a covalently cross-linked dimer. *J Biol Chem* 274: 13098-13104.
- Jennings ML, Howren TR, Cui J, Winters M & Hannigan R (2007). Transport and regulatory characteristics of the yeast bicarbonate transporter homolog Bor1p. *Am J Physiol Cell Physiol* 293: C468-476.
- Kabała K & Kłobus G (2008). Modification of vacuolar proton pumps in cucumber roots under salt stress. *J Plant Physiol* 165: 1830-1837.
- Kawamura Y, Arakawa K, Maeshima M & Yoshida S (2000). Tissue specificity of E subunit isoforms of plant vacuolar H(+)-ATPase and existence of isotype enzymes. *J Biol Chem* 275: 6515-6522.
- Kaya A, Karakaya HC, Fomenko DE, Gladyshev VN & Koc A (2009). Identification of a novel system for boron transport: Atr1 is a main boron exporter in yeast. *Mol Cell Biol* 29: 3665-3674.
- Kirkland PA, Busby J, Stevens S & Maupin-Furlow JA (2006). Trizol-based method for sample preparation and isoelectric focusing of halophilic proteins. *Analytical Biochemistry* 351: 254-259.
- Kluge C, Lahr J, Hanitzsch M, Bolte S, Gollmack D & Dietz KJ (2003). New insight into the structure and regulation of the plant vacuolar H+-ATPase. *J Bioenerg Biomembr* 35: 377-388.

- Kobayashi M, Matoh T & Azuma J (1996). Two chains of rhamnogalacturonan II are cross-linked by borate-diol ester bonds in higher plant cell walls. *Plant Physiol* 110: 1017-1020.
- Li Z & Zhang X (2004). Electron-microscopic structure of the V-ATPase from mung bean. *Planta* 219: 948-54.
- Luttge U & Ratajczak R (1997). The physiology, biochemistry and molecular biology of the plant vacuolar ATPase. *Advances In Botanical Research Incorporating Advances In Plant* 25: 253-296.
- Miwa K, Takano J, Omori H, Seki M, Shinozaki K & Fujiwara T (2007). Plants tolerant of high boron levels. *Science* 318: 1417.
- Nakagawa Y, Hanaoka H, Kobayashi M, Miyoshi K, Miwa K & Fujiwara T (2007). Cell-type specificity of the expression of Os BOR1, a rice efflux boron transporter gene, is regulated in response to boron availability for efficient boron uptake and xylem loading. *Plant Cell* 19: 2624-2635.
- Nishi T & Forgac M (2002). The vacuolar (H<sup>+</sup>)-ATPases - nature's most versatile proton pumps. *Nat Rev Mol Cell Biol* 3: 94-103.
- Nozawa A, Takano J, Kobayashi M, von Wirén N & Fujiwara T (2006). Roles of BOR1, DUR3, and FPS1 in boron transport and tolerance in *Saccharomyces cerevisiae*. *FEMS Microbiol Lett* 262: 216-22.
- O'Neill MA, Ishii T, Albersheim P & Darvill AG (2004). Rhamnogalacturonan II: structure and function of a borate cross-linked cell wall pectic polysaccharide. *Annu Rev Plant Biol* 55: 109-139.
- Öz MT, Yılmaz R, Eyidoğan F, Graaff LD, Yücel M & Öktem HA (2009). Microarray analysis of late response to boron toxicity in barley (*Hordeum vulgare* L.) leaves. *Turk J Agric For* 33: 191-202.
- Patterson J, Ford K, Cassin A, Natera S & Bacic A (2007). Increased abundance of proteins involved in phytosiderophore production in boron-tolerant barley. *Plant Physiol* 144: 1612-1631.
- Pfaffl MW (2001). A new mathematical model for relative quantification in real-time RT-PCR. *Nucl Acids Res* 29: 2002-2007
- Ratajczak R (2000). Structure, function and regulation of the plant vacuolar H<sup>(+)</sup>-translocating ATPase. *Biochim Biophys Acta* 1465: 17-36.
- Reid R (2007). Identification of boron transporter genes likely to be responsible for tolerance to boron toxicity in wheat and barley. *Plant Cell Physiol* 48: 1673-1678.
- Sarowar S, Kim YJ, Kim EN, Kim KD, Hwang BK, Islam R & Shin JS (2005). Overexpression of a pepper basic pathogenesis-related protein 1 gene in tobacco plants enhances resistance to heavy metal and pathogen stresses. *Plant Cell Rep* 24: 216-224.
- Shimizu T, Inoue T & Shiraishi H (2001). A senescence-associated S-like RNase in the multicellular green alga *Volvox carteri*. *Gene* 274: 227-35.
- Shimizu T, Inoue T & Shiraishi H (2002). Cloning and characterization of novel extensin-like cDNAs that are expressed during late somatic cell phase in the green alga *Volvox carteri*. *Gene* 284: 179-187.
- Sutton T, Baumann U, Hayes J, Collins NC, Shi BJ, Schnurbusch T, Hay A, Mayo G, Pallotta M, Tester M & Langridge P (2007). Boron-toxicity tolerance in barley arising from efflux transporter amplification. *Science* 318: 1446-1449.
- Sze H, Schumacher K, Müller ML, Padmanaban S & Taiz L (2002). A simple nomenclature for a complex proton pump: VHA genes encode the vacuolar H<sup>(+)</sup>-ATPase. *Trends Plant Sci* 7: 157-61.
- Takano J, Kobayashi M, Noda Y & Fujiwara T (2007). *Saccharomyces cerevisiae* Bor1p is a boron exporter and a key determinant of boron tolerance. *FEMS Microbiol Lett* 267: 230-5.
- Takano J, Miwa K, Yuan L, von Wirén N & Fujiwara T (2005). Endocytosis and degradation of BOR1, a boron transporter of *Arabidopsis thaliana*, regulated by boron availability. *P Natl Aca Sci USA* 102: 12276-12281.
- Takano J, Noguchi K, Yasumori M, Kobayashi M, Gajdos Z, Miwa K, Hayashi H, Yoneyama T & Fujiwara T (2002). Arabidopsis boron transporter for xylem loading. *Nature* 420: 337-340.
- Takano J, Wada M, Ludewig U, Schaaf G, von Wirén N & Fujiwara T (2006). The Arabidopsis major intrinsic protein NIP5;1 is essential for efficient boron uptake and plant development under boron limitation. *Plant Cell* 18: 1498-509.
- Terzi R, Sağlam A, Kutlu N, Nar H & Kadioğlu A (2010). Impact of soil drought stress on photochemical efficiency of photosystem II and antioxidant enzyme activities of *Phaseolus vulgaris* cultivars. *Turk J Bot* 34: 1-10.
- Torun B, Kalayci M, Ozturk L, Torun A, Aydin M & Cakmak I (2003). Differences in shoot boron concentrations, leaf symptoms, and yield of Turkish barley cultivars grown on boron-toxic soil in field. *J Plant Nutrition* 26: 1735-1747.
- Wilkens S, Vasilyeva E & Forgac M (1999). Structure of the vacuolar ATPase by electron microscopy. *J Biol Chem* 274: 31804-10.
- Wimmer MA, Lochnit G, Bassil E, Mühling KH & Goldbach HE (2009). Membrane-associated, boron-interacting proteins isolated by boronate affinity chromatography. *Plant Cell Physiol* 50: 1292-1304.
- Yang X, Wang X & Wei M (2010). Response of photosynthesis in the leaves of cucumber seedlings to light intensity and CO<sub>2</sub> concentration under nitrate stress. *Turk J Bot* 34: 303-310.