

1-1-1998

Post-Collisional Central Anatolian Alkaline Plutonism, Turkey

DURMUŐ BOZTUŐ

Follow this and additional works at: <https://journals.tubitak.gov.tr/earth>



Part of the [Earth Sciences Commons](#)

Recommended Citation

BOZTUŐ, DURMUŐ (1998) "Post-Collisional Central Anatolian Alkaline Plutonism, Turkey," *Turkish Journal of Earth Sciences*: Vol. 7: No. 3, Article 4. Available at: <https://journals.tubitak.gov.tr/earth/vol7/iss3/4>

This Article is brought to you for free and open access by TÜBİTAK Academic Journals. It has been accepted for inclusion in Turkish Journal of Earth Sciences by an authorized editor of TÜBİTAK Academic Journals. For more information, please contact academic.publications@tubitak.gov.tr.

Post–Collisional Central Anatolian Alkaline Plutonism, Turkey

Durmuş BOZTUĞ

Cumhuriyet Üniversitesi, Jeoloji Müh. Bölümü, 58140 Sivas-TURKEY

Received: 21.05.1998

Abstract: A number of Upper Cretaceous-Palaeogene alkaline plutons intruded into the crustal metamorphic rocks, the pre-Maastrichtian ophiolitic mélangé, and the Cretaceous-Lower Tertiary units are located in the Central Anatolia (CA), Turkey. These alkaline plutons constitute an important association in the post-collisional Central Anatolian Granitoids. The Dumluca, Murmana, Karakeban, Köseadağ, Hasançelebi, Karacaayır and Davulalan plutons constitute the eastern; whereas the Eğrialan, Baranadağ, Hamit, Çamsarı, Durmuşlu and Bayındır units the western part of this alkaline association. These plutons are mainly composed of silica oversaturated syenitic to monzonitic, and undersaturated syenitic felsic rocks. However, the Dumluca, Murmana and Karakeban plutons also include some undersaturated alkaline mafic rocks which are derived from a different mafic magma source rather than being the early fractionation derivatives of the felsic rocks in these plutons. There are some diversification or subdivisions on the basis of mineralogical-chemical characteristics, wall-rock, silica saturation and associated ore deposit/mineralization in these alkaline plutons. The diversification is thought to be sourced from either some solidification processes which modify the primary composition of any mantle-derived magma, or some different alkaline magma pulses generated by the partial melting of mantle material with different types and degrees of partial melting processes in water-starved environment. The latter consideration seems to be more reasonable due particularly to LIL and F enrichments in these rocks. They apparently indicate "late orogenic", "within plate granite (WPG)" and "post-collisional" characteristics on the basis of their major and trace element geochemistry. When the mineralogical-chemical data is considered together with the space-time relations in a regional geological setting, one can suggest such a geodynamic model for the CA post-collisional alkaline plutonism: The magma source of this plutonism can be derived from the partial melting of upwelling upper mantle material by the adiabatic decompression mechanism in the passive margin of the Anatolides in a post-collisional lithospheric attenuation environment within a tensional regime immediately after crustal thickening due to Anatolide-Pontide collision along the northward subduction zone of the northern branch of Neo-Tethys.

Key Words: Post–collisional granitoids, alkaline magmatism, mineralogical–chemical classification, diversification in alkaline plutons, alkaline magma genesis, collision of Anatolides and pontides, Central Anatolia–Turkey.

Çarpışma Sonrası Orta Anadolu Alkali Plütonizması, Türkiye

Özet: Üst Kretase-Paleojen yaşlı birçok alkali plüton, Orta Anadolu bölgesindeki kabuksal metamorfite, pre-Maestrihtiyen yerleşim yaşlı ofiyolitik melanja ve Kretase-Alt Tersiyer yaşlı birimlere sokulum yapmaktadır. Bu plütonlar, çarpışma sonrası Orta Anadolu Granitoidleri içerisinde önemli bir birlik oluşturlar. Dumluca, Murmana, Karakeban, Köseadağ, Hasançelebi, Karacaayır ve Davulalan plütonları bu alkali plütonik birliğin doğu kesimini; Eğrialan, Baranadağ, Hamit, Çamsarı, Durmuşlu ve Bayındır plütonları ise batı kesimini oluşturmaktadır. Bu plütonlar, başlıca, silis bakımından aşırı doymun alkalin karakterli siyenitik-monzonitik ve silis bakımından tüketilmiş alkalin karakterli siyenitik bileşimli kayalardan oluşmaktadır. Bununla birlikte Dumluca, Murmana ve Karakeban plütonları silis bakımından tüketilmiş alkalin karakterli mafik kayalardan da içerirler. Bu alkali mafik kayaların, bu plütonlardaki felsik alkali kayaları oluşturan magmanın ilk fraksiyonlanma ürünlerinden ziyade, farklı bir magmadan itibaren meydana gelmiş oldukları sonucuna varılmıştır. Çarpışma sonrası Orta Anadolu alkali magmatik birliğini meydana getiren plütonlar mineralojik-kimyasal karakteristikler, yan kayaç, silisçe doymunluk ve birlik oluşturdıkları maden yatakları/cevherleşmeler bakımından çeşitli alt gruplara ayrılırlar. Bu alt gruplara ayrılma özelliğinin, mantodan türemiş bir magma kaynağının katılması sırasında etkin olan ve böylece bileşimin değişimine neden olan bazı katılma süreçleriyle meydana gelebileceği gibi; manto malzemesinin, su bakımından fakir ortamlarda, değişik tip ve derecelerde kısmi erimeye uğraması sonucu oluşan değişik alkali magma getirimlerinden de kaynaklanabileceği düşünülmektedir. Farklı magma getirimleri düşüncesi, bu kayaların özellikle LIL bakımından zengin olması ve F cevherleşmesi içermesi bakımından daha uygun görülmektedir. Orta Anadolu alkali plütonları ana ve eser element jeokimyası verilerine göre belirgin bir şekilde "geç orojenik", "levha içi" ve "çarpışma sonrası" karakteristikleri gösterirler. Mineralojik-kimyasal veriler, bölgesel jeolojik konum ile birlikte değerlendirildiğinde, çarpışma sonrası Orta Anadolu alkali plütonlarının oluşumu için şöyle bir jeodinamik evrim modeli ileri sürülebilir: Bu plütonizmanın magma kaynağı, Neo-Tetis'in kuzey kolunun, kuzeye doğru dalma-batmaya uğramasıyla meydana gelen suture zonu boyunca gelişen Anatolide-Pontid çarpışmasına bağlı kabuk kalınlaşmasından hemen sonra gelişen çarpışma sonrası gerilme rejimi altındaki litosferik inceleme sırasında, Anatolidler pasif kenarında yükselmiş bulunan manto malzemesinin adiyabatik dekompresyon mekanizması ile kısmi erimeye uğraması sonucu meydana gelmiş olabilir.

Anahtar Sözcükler: Çarpışma sonrası granitoidler, alkali magmatizma, mineralojik–kimyasal sınıflandırma, alkali plütonizmde farklılaşma, alkali magma oluşumu, Anatolide–Pontid çarpışması, Orta Anadolu–Türkiye.

Introduction

The collision event conceptually indicates the final stage of an orogenic phase through which a new rifting/opening of an oceanic basin, i.e. Wilson cycle (Mason, 1985; p.139), has already started, and, also the initialization stage, i.e. triggering, of the following orogenic phase by causing a change of tectonic regime from compressional to tensional (Channel, 1986). So that, the juxtaposition of two plates at the end of an orogenic cycle also triggers a new Wilson cycle in geological context in space and time. This process, so-called collision or juxtaposition, takes several tens of millions of years (approximately 30-50 Ma, Bonin, 1990). This time span is particularly characterized by some special geological records that appear in magmatism, metamorphism and sedimentation (Coward and Ries, 1986).

Geologically, Turkey constitutes an important part of the Alpine-Himalayan system which is one of the most spectacular collision zones of the planet Earth. As commonly known, the Neo-Tethyan oceanic realm, opened in Triassic and closed in Upper Cretaceous (Şengör and Yılmaz, 1981; Poisson, 1986), has been an important convergence system in the evolution of Turkey, and, of course, of the Alpine-Himalayan belt. The Upper Cretaceous subduction and following collision of the Neo-Tethyan oceanic crust with the Rhodope-Pontide fragment has resulted to form some special geological structures (Şengör and Yılmaz, 1981), e.g. Ankara-Erzincan suture zone and eastern Pontide arc magmatism; post-collisional Sivas basin (Cater et al., 1991; Yılmaz, 1994) and other Central Anatolian basins (Görür et al., 1984; Göncüoğlu et al., 1993; Yılmaz, 1994) and post-collisional granitoid magmatism (Akıman et al., 1993; Boztuğ et al., 1994a; Göncüoğlu and Türel, 1994; Erler and Bayhan, 1995; Erler and Göncüoğlu, 1996; İlbeyli and Pearce, 1997; Ekici et al., 1997).

This paper deals essentially with the geological setting, main mineralogical-chemical characteristics and petrogenetic-geodynamic interpretation of the alkaline plutons among these post-collisional Central Anatolian granitoids.

General Overview to Central Anatolian Granitoids

There are widespread magmatic intrusive associations that intrude the crustal metamorphic rocks of the Kırşehir block (Görür et al., 1984; Poisson, 1986) or Central Anatolian Crystalline Complex (Göncüoğlu et al., 1991), the pre-Maastrichtian ophiolitic mélange and the

other units of Cretaceous to Lower Tertiary in age. They are unconformably covered by some Eocene or younger sedimentary units in Central Anatolia (CA) (Figure 1). Therefore, these plutons are considered to have been emplaced in a time interval between Upper Cretaceous (Maastrichtian) and Eocene. There are some radiometric age determinations on some of these plutons as follows: Ayan (1963) has reported a total Pb age of 54 Ma on zircon minerals from the Baranadağ pluton. Ataman (1972) has studied the Cefalıkdağ pluton with the Rb-Sr method. The wholerock-biotite isochron age of this pluton determines an age of 71 Ma. Kalkanlı (1974) has reported an age of 42 ± 4 Ma based on Rb-Sr wholerock isochron on the Köseadağ pluton. Göncüoğlu (1986) has studied the metamorphics and Üçkapılı granitoid from Niğde massif in Central Anatolia. He has obtained some radiometric ages sometimes around Upper Cretaceous in both of metamorphics and intrusives, e.g. a Rb-Sr wholerock isochron age of 95 ± 11 and a Rb-Sr wholerock-mineral age of 77.8 ± 1.2 Ma in the Üçkapılı granitoid (Göncüoğlu, 1986). In addition to those of Rb-Sr geochronological data, the K-Ar radiometric datings have also yielded Upper Cretaceous ages on Üçkapılı granitoid, e.g. two biotite ages indicate 74.9 ± 1.2 Ma and 76.2 ± 1.2 Ma, one muscovite age reveals 78.5 ± 1.2 Ma. The feldspathoidal syenites from Bayındır area has yielded a Rb-Sr wholerock isochron age of 70.7 ± 1.1 Ma with a Sr^{87}/Sr^{86} initial ratio of 0.7085 (Gündoğdu et al., 1988). On the other hand, there are some absolute age datings in the granitoids of Central Anatolia that show some Lower Cretaceous ages. For example, Zeck and Ünlü (1987, 1988a, 1988b) have reported some Rb-Sr ages ranging from 109 ± 5 Ma to 110 ± 5 Ma in the Murmana pluton of Divriği region, SE Sivas. Similar to that of Murmana pluton in Divriği region, the isochron age of three wholerock samples from the megacrystalline granites of Ağaçören granitoid in Aksaray region yields an age of 108 ± 3 Ma, with a Sr^{87}/Sr^{86} initial ratio of 0.708602 ± 0.00008 (Güleç, 1994).

On the other hand, it must be pointed out here that, the K-Ar dating studies carried out in the crustal metasediments of the CACC reveal some ages of 69-74 Ma (Kalkanlıdağ region; Erkan and Ataman, 1981), 76-77 Ma (Niğde massif, Göncüoğlu, 1986), and 68-77 Ma (Yıldızeli-Sivas region; Alpaslan et al., 1996). These data represent a good synchronization between the magmatism and metamorphism in the Central Anatolia. In addition to this synchronization of magmatism and metamorphism, the decreasing of metamorphic grade from north to south (Erkan, 1981), i.e. from the Ankara-Erzincan suture zone to the fossiliferous Paleozoic

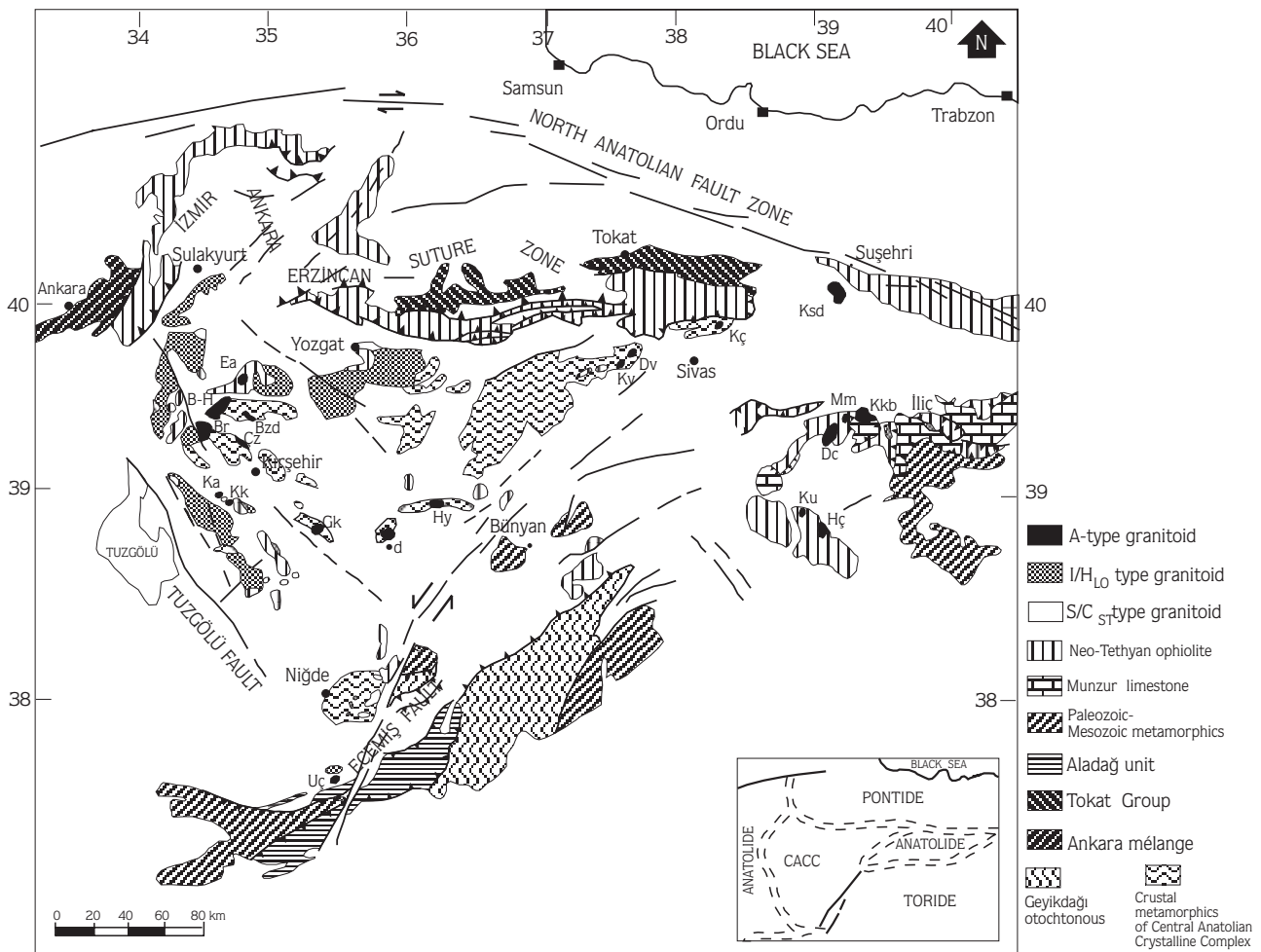


Figure 1. Simplified geographical settings of the plutonic and metamorphic rocks in the Central Anatolia, Turkey (modified after Bingöl, 1989). The abbreviations of plutons are as follow (from west to east): B-H, Bayındır-Hamit; Ea, Eğrialan; Br, Baranadağ; Bzd, Buzlukdağ; Çz, Çayağzı; Ka, Kuruoğlu; Kk, Kesikköprü; Gk, Gümüşkent; Uç, Uçuruntepe; Id, İdişdağ; Hy, Hayriye; Kv, Kavik; Dv, Davulalan; Kç, Karaçayır; Ksd, Köseadağ; Ku, Kuluncak; Hç, Hasançelebi; Dc, Dumluca; Mm, Murmana; Kkb, Karakeban.

Taurus autochthonous, may indicate an inverted metamorphism, associated with magmatism induced by the collision of Anatolides and Pontides (the southernmost tip of Eurasia) along the Ankara-Erzincan suture zone, resembling to those in Himalayan (Le Fort, 1986) and Massif Central, France (Burg et al., 1994).

On the basis of existing published and unpublished literature, the Central Anatolian intrusive rocks comprise, from pre-orogenic to syn-orogenic to post-orogenic suites,

- some gabbroic rocks and oceanic plagiogranites (Göncüoğlu and Türel, 1993; Yalınz et al., 1996);
- calc-alkaline, I-type and arc-related plutons (Ortaköy pluton, E of Tuzgölü, Bayhan, 1990);

- calc-alkaline, alumino-caffemic to caffemic, collision-related plutons, displaying I-type and S-type features (Ekecikdağ pluton, Türel et al., 1993; Göncüoğlu and Türel, 1994, and Cefalıkdağ pluton, Geven, 1995);

- S-type, syn-collisional, two-mica granites (Üçkapılı pluton, Göncüoğlu, 1986; Yücebaca pluton, Alpaslan and Boztuğ, 1997; Sarıhacılı leucogranite, Ekici et al., 1997);

- calc-alkaline, caffemic, I-type and post-collisional Çaltı pluton (Avcı and Boztuğ, 1993),

- H_{LO} (hybrid late orogenic; Barbarin, 1990) or I-type, high-K calc-alkaline, typically K-feldspar megacrystalline post-collisional monzonitic association of the composite Yozgat batholith (Aydın, 1997; Aydın et al., 1997; Tatar and Boztuğ, 1997);

- post-collisional silica oversaturated alkaline, syenitic-monzonitic and monzogabbroic-monzodioritic plutons (Hasaepli pluton, Yılmaz et al., 1993; Kösedağ pluton, Boztuğ et al., 1994b; Dumluca, Murmana and Karakeban plutons, Zeck and Ünlü, 1991; Boztuğ et al., 1997; Karaçayır pluton, Boztuğ et al., 1996; Davulalan pluton, Alpaslan and Boztuğ, 1997; Baranadağ quartz monzonite, Hamit quartz syenite, Çamsarı quartz syenite, Bayhan and Tolluoğlu, 1987; Otlu and Boztuğ, 1997; İdişdağ syenite, Göncüoğlu et al., 1995, 1997; Eğrialan syenite, Yılmaz and Boztuğ, 1997) and silica undersaturated alkaline plutons (some parts of Karaçayır and Davulalan plutons and Eğrialan syenite; Hayriye nepheline syenite (Kayseri-Felahiye), Özkan and Erkan, 1994; Durmuşlu nepheline-nosean-melanite syenite porphyry, Bayındır nepheline cancrinite syenite, Otlu and Boztuğ, 1997),

- post-collisional mafic gabbroic/dioritic plutons (Yıldızdağ pluton, Yıldızeli-Sivas region, Boztuğ et al., 1998).

Of these the youngest ones are the alkaline plutons which have already been named as the "Central-Eastern Anatolian (CEA) alkaline province" (Figure 1) by Yılmaz and Boztuğ (1991), and the mafic gabbroic plutons such as Yıldızdağ pluton. Among the alkaline plutons, the silica undersaturated ones are seen to intrude the oversaturated ones. Moreover, these alkaline plutons are also spatially and temporally associated with the formation of post-collisional Sivas (Cater et al., 1991; Yılmaz, 1994) and Central Kızılırmak (Göncüoğlu et al., 1993) basins in Central Anatolia. These authors propose that the development of these basins begins sometimes around Uppermost Cretaceous to Lower Tertiary which is also the emplacement period of the alkaline plutons within or in the marginal parts of the basins. Thus, the term "post-collisional CA alkaline plutonism" seems to be more appropriate than the "CEA alkaline province" because it also emphasizes the regional geology.

Mineralogical-Geochemical Characteristics

Divriği region plutons: Felsic rocks of Divriği region plutons, namely Dumluca, Murmana and Karakeban, display medium to coarse grained texture. They are mainly composed of quartz monzonite, syenite, quartz syenite and some fractionated monzogranite (Figure 2). Mafic rocks, mafic dykes and mafic microgranular enclaves (MME) in these plutons comprise gabbro/diorite and monzogabbro/monzodiorite. The felsic minerals of the felsic rocks is a K-feldspar + plagioclase+quartz association. Percentage of quartz minerals varies from 8-

10 % (quartz monzonite and quartz syenites) to 25-30 % (monzogranites). K-feldspar constitutes more than 55-60 % and 70 % of all the feldspar minerals in monzonitic-monzogranitic and syenitic rocks, respectively. The mafic minerals of the monzonitic and syenitic rocks consist mainly of hastingsite/arfvedsonite+biotite. But, those of the monzogranites are composed solely of biotite. These monzogranites have been considered as the final fractionation product of the magma (Boztuğ et al., 1997). Major felsic and mafic minerals of the mafic rocks in the Divriği region plutons are composed of plagioclase(An_{32-44})±K-feldspar±nepheline, and hastingsitic amphibole + aegite + aegirineaugite + biotite ± olivine mineral assemblages, respectively. Transformation of clinopyroxene minerals to amphibole, and even to biotite is a common microscopical feature in both of the felsic, and particularly mafic rocks in these plutons. In addition to the MME occurrences in the felsic rocks, as indicators of mafic magma blobs within felsic magma (Barbarin and Didier, 1992), some special textures called antirapakivi texture, blade biotite, acicular apatite and spongy-cellular dissolution/melting textures in plagioclase (Hibbard, 1995) evidence magma mingling/mixing processes between coeval mafic and felsic magmas during emplacement of Divriği region plutons. Major element chemical compositions (Table 1) of these plutons apparently indicate the alkaline feature in the TAS (dividing line taken after Rickwood, 1989) diagram (Figure 4).

Trace element data (Table 1) available for the felsic rocks has been plotted in the PRIM (primordial mantle) by the NEWPET'94 computer program. In fact, all three oversaturated alkaline plutons in Divriği region display a coherent set of patterns (Figure 5). Relative to the normalizing composition, the rocks of Dumluca pluton are enriched in the most incompatible elements together with a negative Ba anomaly, and depleted in Zr, Sm and Y. As commonly known, the Ba readily substitutes for K in feldspar, hornblende and biotite (Wilson, 1989). So that, the negative Ba anomaly pattern in the Dumluca, Murmana and Karakeban plutons can be related to the HT feldspar fractionation rather than hornblende and biotite, i.e. some highly alkaline rocks such as syenites and feldspathoidal syenites could have been crystallized from the same magma. Similarly, the Zr and Y could have been consumed by some early phases such as zircon and amphibole minerals of those probable early highly alkaline rocks. However, these trace element patterns can be sourced from the initial mineralogical composition and partial melting model of the source rocks, i.e. the type

Table 1. Averages and standard deviations of the wholerock major (wt %) and trace element (ppm) chemical compositions of the post-collisional Central Anatolian alkaline plutons.

Pluton	Rock Type	n	SiO ₂	Al ₂ O ₃	TiO ₂	tFe ₂ O ₃	MnO	MgO	CaO	Na ₂ O	K ₂ O	P ₂ O ₅	LOI	Total
Dcf	qmz	8	65.83 (1.10)	17.18 (0.45)	0.44 (0.13)	3.26 (0.45)	0.05 (0.02)	0.92 (0.25)	1.99 (0.34)	5.02 (0.38)	5.04 (0.33)	0.16 (0.05)	0.74 (0.26)	100.63 (0.66)
	mzgr	5	70.12 (0.48)	15.54 (0.25)	0.36 (0.03)	2.89 (0.20)	0.04 (0.01)	0.92 (0.04)	1.31 (0.07)	4.06 (0.14)	4.69 (0.12)	0.15 (0.01)	0.73 (0.13)	100.81 (0.66)
Dcm	mzgo	8	52.28 (1.88)	16.35 (1.36)	1.49 (0.69)	7.70 (1.14)	0.12 (0.01)	6.15 (1.80)	8.60 (1.06)	3.47 (0.80)	2.70 (0.53)	0.30 (0.10)	1.71 (0.70)	100.85 (0.44)
Mmf	qmz	8	65.00 (2.11)	16.86 (0.55)	0.49 (0.17)	3.36 (0.79)	0.04 (0.02)	1.64 (0.55)	2.84 (0.51)	4.58 (0.21)	4.69 (0.32)	0.21 (0.05)	0.72 (0.14)	100.44 (0.61)
Mmm	nmzgo	3	46.90 (2.99)	17.08 (1.41)	1.70 (1.40)	7.30 (3.82)	0.37 (0.43)	6.60 (0.78)	13.59 (3.83)	3.18 (1.12)	2.10 (0.96)	0.46 (0.40)	2.52 (0.42)	101.70 (0.31)
Kkf	mz	2	63.58 (0.75)	17.42 (0.39)	0.59 (0.03)	4.10 (0.06)	0.07 (0.21)	0.73 (0.91)	2.04 (0.35)	5.87 (0.76)	4.54 (0.08)	0.19 (0.02)	0.69 (0.11)	99.81 (0.11)
	sy	3	62.17 (0.64)	17.40 (0.09)	0.60 (0.07)	5.16 (0.09)	0.10 (0.02)	0.75 (0.47)	1.54 (0.49)	5.94 (0.36)	5.68 (0.08)	0.12 (0.05)	0.95 (0.48)	100.42 (1.05)
	qs	6	67.69 (1.58)	16.21 (0.82)	0.33 (0.07)	3.29 (0.43)	0.05 (0.01)	0.60 (0.08)	1.05 (0.12)	4.84 (0.20)	5.87 (0.31)	0.11 (0.03)	0.63 (0.24)	100.65 (0.82)
Kkm	mzgr	5	72.30 (1.03)	14.60 (0.64)	0.16 (0.02)	1.65 (0.57)	0.02 (0.01)	0.45 (0.07)	0.59 (0.13)	4.41 (0.26)	4.73 (0.09)	0.10 (0.01)	0.66 (0.14)	99.68 (0.59)
	nmzgo	3	49.10 (3.84)	17.60 (0.97)	2.00 (0.13)	10.89 (1.30)	0.15 (0.04)	3.87 (1.62)	5.34 (1.37)	5.52 (0.47)	2.74 (0.76)	0.58 (0.02)	2.20 (1.80)	99.98 (0.55)
Kd	sy	40	60.18 (2.10)	17.47 (0.52)	0.62 (0.07)	4.75 (0.93)	0.11 (0.03)	2.03 (0.72)	3.04 (0.67)	4.37 (0.40)	5.83 (0.54)	0.29 (0.07)	1.08 (1.04)	99.78 (1.15)
	qs	30	62.72 (2.26)	17.22 (0.38)	0.54 (0.07)	3.85 (0.73)	0.10 (0.03)	1.60 (0.76)	2.12 (0.57)	4.42 (0.29)	6.18 (0.52)	0.21 (0.06)	0.87 (0.49)	99.82 (1.36)
	mz	2	56.57 (1.51)	17.37 (0.74)	0.73 (0.00)	6.33 (0.20)	0.12 (0.01)	2.76 (0.13)	4.85 (1.31)	3.92 (0.02)	4.61 (0.58)	0.40 (0.06)	1.02 (0.26)	98.66 (0.16)
	qmz	7	60.11 (2.57)	17.19 (0.58)	0.61 (0.10)	4.98 (0.92)	0.11 (0.02)	2.35 (0.64)	3.29 (0.60)	4.26 (0.48)	5.12 (0.27)	0.29 (0.07)	1.71 (1.83)	100.00 (1.04)
Hç	sy	2	64.36 (1.18)	17.68 (0.91)	0.71 (0.00)	0.70 (0.17)	0.06 (0.02)	0.48 (0.55)	1.66 (1.20)	4.79 (0.43)	7.19 (0.22)	0.03 (0.00)	1.71 (1.39)	99.34 (0.90)
	qs	4	65.48 (1.78)	15.89 (0.72)	0.54 (0.09)	1.07 (0.19)	0.14 (0.19)	0.29 (0.18)	1.67 (1.23)	4.19 (0.64)	6.86 (0.88)	0.11 (0.06)	2.20 (1.02)	98.66 (0.49)
Kç	sy	13	61.77 (2.06)	19.80 (1.52)	0.14 (0.09)	1.21 (0.88)	0.06 (0.04)	0.12 (0.08)	0.49 (0.24)	4.58 (1.48)	8.62 (1.83)	0.04 (0.02)	1.81 (0.62)	98.62 (0.50)
Dv	qmz	2	69.53 (0.15)	17.78 (1.24)	0.11 (0.01)	0.82 (0.85)	0.01 (0.01)	0.28 (0.01)	1.83 (0.40)	5.22 (0.34)	4.92 (0.37)	0.03 (0.00)	0.86 (0.26)	101.37 (0.05)
	qs	2	67.21 (1.21)	17.15 (0.22)	0.26 (0.11)	1.63 (0.10)	0.02 (0.02)	0.19 (0.27)	1.06 (0.76)	5.33 (0.25)	6.51 (0.33)	0.05 (0.05)	0.96 (0.42)	100.35 (0.81)
Eğ	sy	9	61.40 (1.31)	19.06 (0.55)	0.44 (0.10)	3.20 (0.96)	0.10 (0.04)	0.98 (0.28)	2.90 (1.30)	4.77 (0.36)	6.64 (0.59)	0.23 (0.23)	0.73 (0.50)	100.46 (1.26)
Br	sy	2	60.70 (2.33)	18.93 (0.33)	0.39 (0.05)	3.74 (1.07)	0.09 (0.01)	1.17 (0.40)	3.84 (0.76)	3.48 (0.55)	7.48 (0.30)	0.19 (0.08)	0.55 (0.08)	100.52 (0.61)
	qmz	9	63.04 (1.43)	18.03 (0.06)	0.42 (0.04)	3.94 (0.28)	0.11 (0.01)	1.73 (0.23)	3.81 (0.54)	3.80 (0.15)	5.05 (0.20)	0.18 (0.03)	0.53 (0.12)	100.63 (0.59)
Hm	qs	6	63.82 (1.21)	17.97 (0.39)	0.40 (0.03)	3.63 (0.25)	0.10 (0.01)	1.51 (0.24)	3.33 (0.32)	3.82 (0.34)	6.12 (1.05)	0.19 (0.01)	0.47 (0.24)	100.85 (0.24)
	qmz	6	61.48 (0.93)	18.22 (0.45)	0.45 (0.05)	4.33 (0.47)	0.09 (0.01)	1.69 (0.27)	4.24 (0.33)	3.47 (0.17)	4.86 (0.27)	0.17 (0.02)	1.03 (0.44)	100.03 (1.12)
Çs	qs	9	64.34 (1.61)	18.00 (0.31)	0.34 (0.08)	3.13 (0.88)	0.08 (0.02)	1.26 (0.35)	2.88 (0.81)	4.05 (0.41)	6.02 (0.49)	0.16 (0.06)	0.59 (0.22)	100.84 (0.45)
	qs	5	67.27 (1.60)	18.24 (0.54)	0.18 (0.08)	1.54 (0.56)	0.03 (0.03)	0.47 (0.09)	1.12 (0.56)	5.06 (0.30)	6.20 (0.21)	0.06 (0.02)	0.69 (0.23)	100.86 (0.27)
Dş	mzgr	2	69.99 (0.08)	16.61 (0.11)	0.11 (0.04)	1.10 (0.11)	0.03 (0)	0.47 (0.04)	0.96 (0.29)	4.78 (0.04)	5.07 (0.17)	0.04 (0.01)	0.81 (0.44)	99.96 (0.09)
	nnmsp	6	57.19 (0.57)	20.72 (0.36)	0.29 (0.05)	2.78 (0.47)	0.09 (0.01)	0.64 (0.08)	3.21 (0.82)	5.79 (0.55)	8.54 (0.27)	0.09 (0.02)	1.66 (0.27)	101.01 (0.36)
By	sy	3	63.93 (0.49)	19.70 (0.18)	0.22 (0.03)	1.77 (0.15)	0.04 (0.04)	0.37 (0.05)	1.10 (0.37)	5.56 (0.64)	7.37 (1.32)	0.05 (0)	0.62 (0.16)	100.74 (0.34)
	ncs	7	62.12 (1.91)	20.15 (0.70)	0.21 (0.12)	2.06 (0.96)	0.07 (0.03)	0.51 (0.20)	1.55 (0.68)	6.14 (0.97)	7.25 (0.93)	0.06 (0.05)	0.87 (0.32)	101.06 (0.46)

Table 1. (continued)

Co	Cu	Pb	Zn	Rb	Ba	Sr	Nb	Zr	Y	Th	Ga
11	7	23	61	172	643	211	51	280	39	24	22
(1)	(2)	(11)	(8)	(22)	(88)	(28)	(5)	(39)	(5)	(15)	(1)
9	6	27	58	210	464	127	39	221	47	23	20
(1)	(1)	(1)	(3)	(7)	(79)	(6)	(4)	(15)	(3)	(14)	(1)
24	53	11	72	71	437	396	33	141	20	16	na
(3)	(28)	(2)	(5)	(18)	(76)	(92)	(9)	(52)	(4)	(14)	-
11	5	13	51	159	959	306	24	216	33	12	na
(3)	(2)	(4)	(8)	(23)	(140)	(40)	(3)	(27)	(2)	(4)	-
23	267	14	63	78	723	488	32	140	21	16	14
(11)	(426)	(3)	(17)	(42)	(574)	(147)	(29)	(35)	(9)	(7)	(1)
na	na	na	na	na	na	na	na	na	na	na	na
-	-	-	-	-	-	-	-	-	-	-	-
17	3	20	95	179	685	118	81	265	47	12	24
(1)	(2)	(7)	(12)	(20)	(501)	(44)	(14)	(58)	(7)	(4)	(1)
10	3	22	74	213	385	92	65	363	50	17	24
(1)	(1)	(3)	(9)	(35)	(192)	(30)	(24)	(59)	(8)	(5)	(1)
5	5	21	61	287	159	42	70	229	65	33	26
(2)	(1)	(3)	(27)	(8)	(46)	(4)	(7)	(9)	(1)	(3)	(1)
na	na	na	na	na	na	na	na	na	na	na	na
-	-	-	-	-	-	-	-	-	-	-	-
37	76	36	100	168	714	515	21	244	46	16	na
(22)	(42)	(26)	(51)	(42)	(196)	(162)	(8)	(78)	(15)	(10)	-
57	55	38	94	222	547	355	28	380	59	26	na
(31)	(9)	(10)	(18)	(43)	(147)	(133)	(7)	(159)	(15)	(10)	-
47	95	30	89	119	777	781	23	208	39	14	na
(2)	(31)	(2)	(2)	(47)	(26)	(72)	(2)	(14)	(6)	(7)	-
35	78	31	94	155	658	54	18	234	39	13	na
(24)	(25)	(6)	(12)	(13)	(117)	(57)	(6)	(31)	(6)	(4)	-
22	32	29	64	95	2804	376	60	510	47	31	78
(8)	(4)	(2)	(4)	(17)	(1133)	(143)	(14)	(200)	(3)	(9)	(2)
23	30	30	69	123	1225	92	72	484	59	47	68
(14)	(1)	(1)	(4)	(5)	(137)	(49)	(25)	(306)	(12)	(15)	(8)
19	32	43	83	182	1622	1356	49	546	44	78	36
(5)	(6)	(21)	(21)	(39)	(1163)	(1188)	(22)	(388)	(8)	(43)	(3)
100	31	31	64	164	1409	1351	24	335	26	63	nd
(3)	(2)	(3)	(2)	(13)	(114)	(234)	(12)	(101)	(2)	(28)	-
80	29	35	73	350	497	294	40	270	58	82	48
(20)	(2)	(3)	(5)	(24)	(48)	(103)	(1)	(181)	(2)	(9)	(8)
10	8	93	103	226	1089	842	36	524	46	40	na
(3)	(3)	(26)	(13)	(48)	(381)	(367)	(14)	(205)	(8)	(25)	-
13	12	38	98	206	858	1111	32	265	41	24	18
(4)	(4)	(2)	(6)	(14)	(468)	(154)	(6)	(58)	(0)	(11)	(0)
13	10	29	93	155	1062	558	18	234	34	31	19
(1)	(3)	(16)	(1)	(17)	(195)	(94)	(1)	(7)	(3)	(18)	(1)
12	15	39	91	202	1091	653	23	276	41	31	19
(1)	(6)	(13)	(2)	(32)	(250)	(93)	(3)	(31)	(5)	(15)	(2)
15	11	54	78	137	2283	741	16	256	27	25	19
(1)	(3)	(30)	(6)	(16)	(250)	(42)	(6)	(8)	(2)	(13)	(1)
10	9	53	81	249	923	615	24	294	46	65	20
(3)	(3)	(15)	(7)	(57)	(473)	(200)	(8)	(46)	(9)	(42)	(1)
4	6	84	68	384	290	235	48	440	66	94	23
(2)	(1)	(21)	(9)	(45)	(163)	(89)	(15)	(140)	(3)	(32)	(1)
3	6	59	58	375	309	191	28	217	59	61	21
(0)	(2)	(16)	(2)	(141)	(299)	(130)	(12)	(7)	(21)	(7)	(3)
9	11	117	109	267	1436	1154	42	473	46	40	19
(1)	(2)	(23)	(9)	(40)	(612)	(269)	(11)	(45)	(4)	(17)	(1)
5	5	67	78	305	256	226	46	523	54	111	23
(1)	(2)	(7)	(3)	(10)	(137)	(82)	(2)	(353)	(1)	(47)	(2)
6	11	97	92	294	651	369	49	430	48	96	22
(3)	(10)	(28)	(8)	(74)	(767)	(379)	(9)	(236)	(10)	(84)	(4)

tFe₂O₃ and LOI represent total iron as ferric oxide and loss on ignition, respectively. The number, given in parenthesis below each value, corresponds the standard deviation. n, the number of analysed rock samples; na, not analysed. The abbreviations of the plutons are as follow: Dcf, Dumluca felsic; Dcm, Dumluca mafic; Mmf, Murmana felsic; Mmm, Murmana mafic; Kkf, Karakeban felsic; Kkm, Karakeban mafic; Kd, Kösedag; Hç, Hasançelebi; Kç, Karaçayır; Dv, Davulalan; Eğ, Eğrialan; Br, Baranadağ; Hm, Hamit; Çs, Çamsarı; Dş, Durmuşlu; By, Bayındır. The abbreviations of the rock types are as follow: qmz, quartz monzonite; mzgr, monzogranite; mzgo, monzogabbro/monzodiorite; nmzgo, nepheline monzogabbro/monzodiorite; mz, monzonite; sy, syenite; qş, quartz syenite; nsy, nepheline syenite; nrmsp, nepheline-nosean-melanite syenite porphyry; ncs, nepheline-cancrinite syenite.

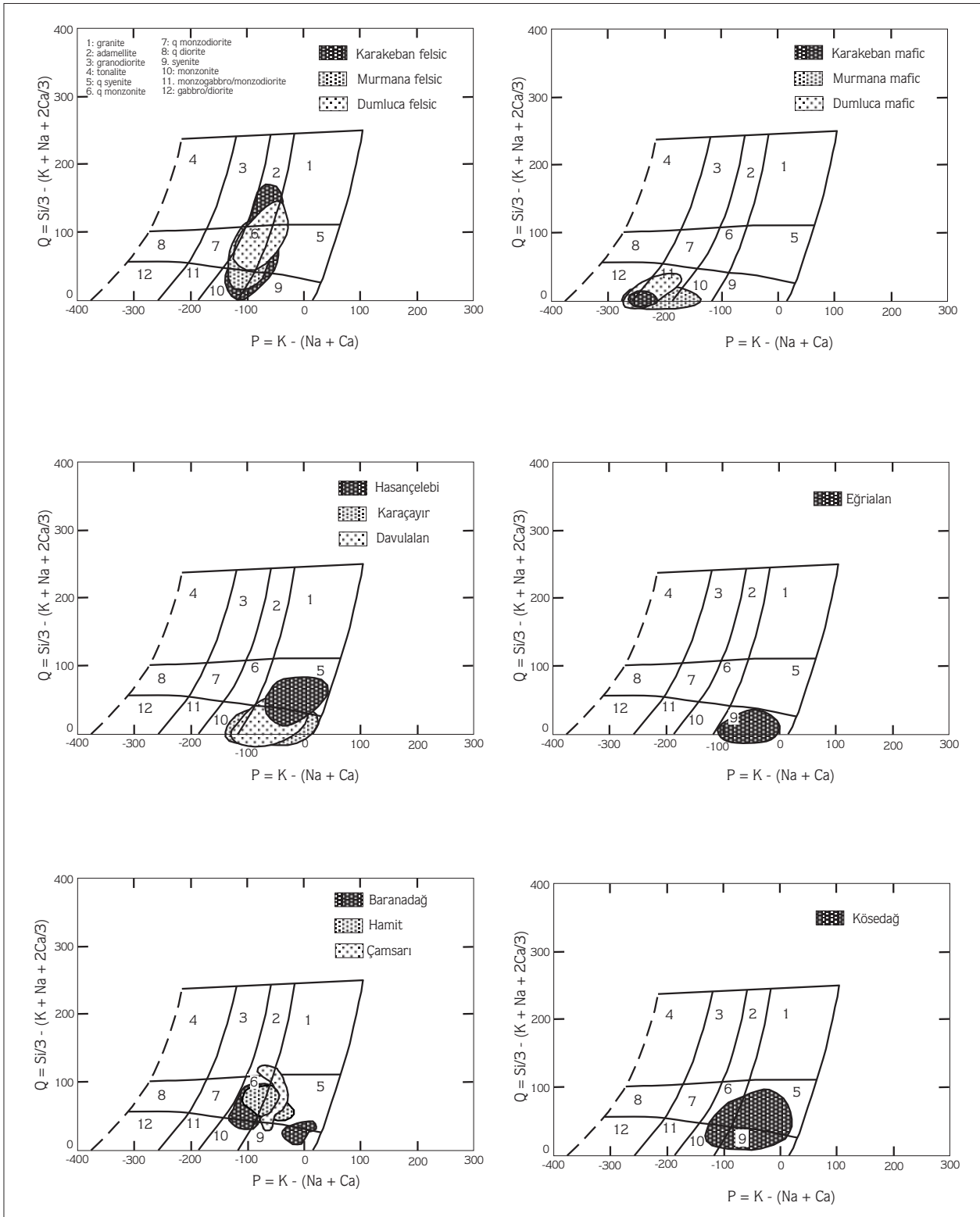


Figure 2. Chemical nomenclature diagram (Debon and Le Fort, 1983) of the silica oversaturated alkaline plutons.

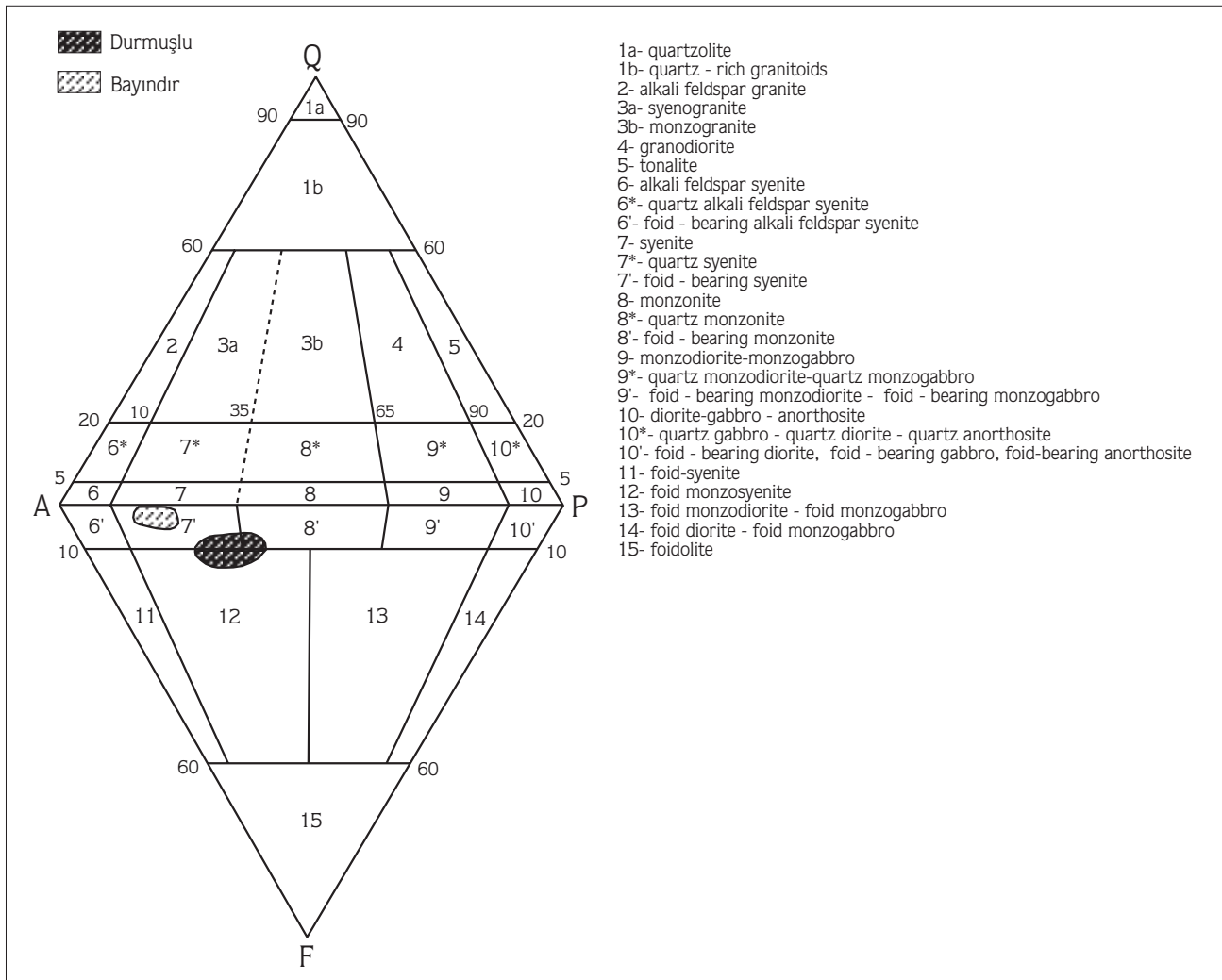


Figure 3. QAPF nomenclature diagram (Streckeisen, 1976) of the silica undersaturated alkaline plutons.

and degree of partial melting and also the garnet content of the source rocks (Wilson, 1989). An important point in the PRIM normalized spider diagram of the Karakeban pluton is that the Th content is notably higher (Figure 5) than the other two plutons in Divriği region. On the other hand, the Karakeban pluton can also be suggested to represent the crustal contamination, or the fractionation, or the low degree partial melting during magma genesis, since, the contents of crustal-derived, or fractionation-related, or low-degree partial melting depended elements like Rb, Th, Nb and Y are higher than those of other plutons (Figure 5). The geotectonic classification diagrams of Batchelor and Bowden (1985) and Pearce et al. (1984) represent “late orogenic” and “WPG” characteristics for all three Divriği region plutons, respectively, (Figures 6, 7), which is convenient for the

post-collisional alkaline magmatism (Harris et al., 1986). For the comparison of petrological and petrogenetical data of Zeck and Ünlü (1987, 1988a, 1988b) on Murmana pluton, the reader is suggested to read Boztuğ et al. (1997).

Kösedağ pluton: This pluton consists of medium- to coarse-grained and fine- to medium-grained rocks which can be separately mapped (Boztuğ et al., 1994b). The medium- to coarse-grained rocks from the main body are composed mainly of quartz syenite, syenite and rarely of monzonitic rocks (monzonite and quartz monzonite). Fine- to medium-grained rocks are seen as the fractionated rocks within the main body. The major felsic and mafic constituents of the samples from the Kösedağ pluton are made up of K-feldspar+plagioclase±quartz, and kaersutitic amphibole + clinopyroxene (generally

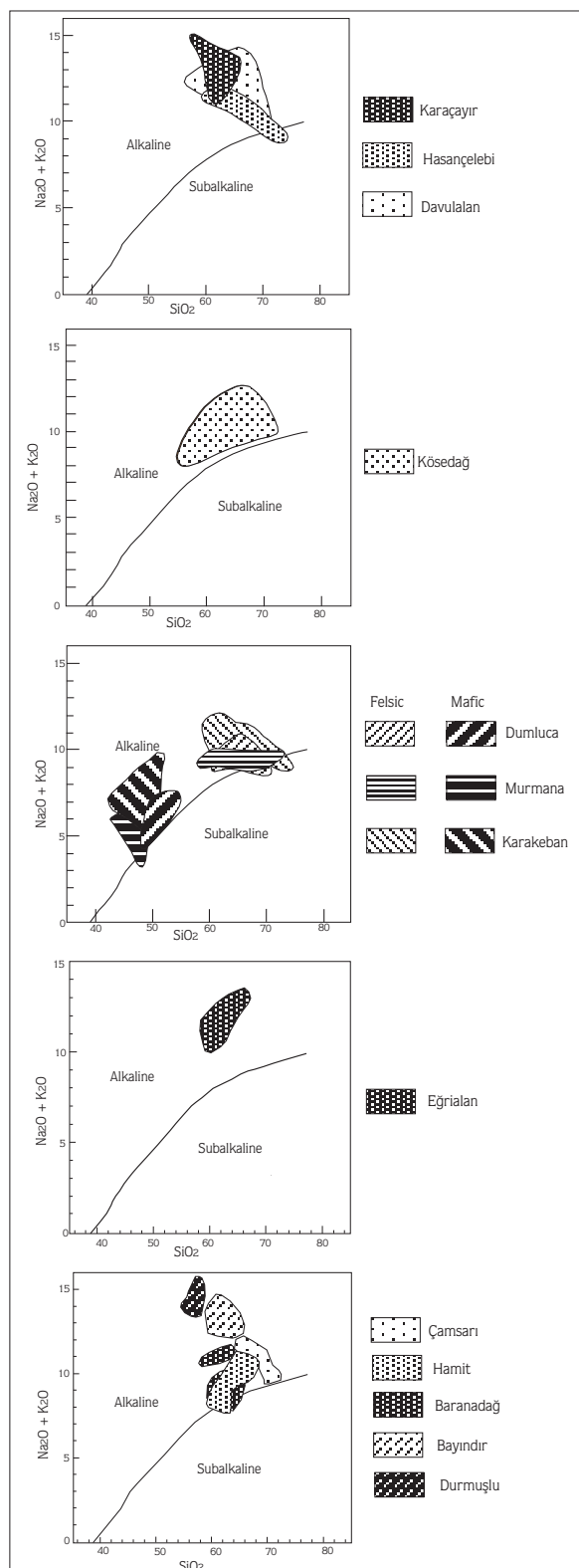


Figure 4. Total alkali versus silica variation diagrams (dividing line has been taken after Rickwood, 1989) of the plutons.

augite, diopsidic augite and rarely aegirine-augite) + biotite minerals, respectively. Quartz is never more than 10 % of mineralogical composition in syenitic and monzonitic rocks in which K-feldspar always constitutes more than a half of all feldspar minerals. There are some special microscopic textures, described by Hibbard (1995) as evidence for the equilibrated hybrid system caused by mixing of coeval mafic and felsic magmas. There are antirapakivi texture, acicular apatite, blade biotite, and K-feldspar / amphibole-clinopyroxene poikilitic texture (Boztuğ et al., 1994b).

Alkaline composition of the Köseadağ batholith is clearly shown in Figure 4. PRIM normalized trace element spider diagram represent a negative Ba anomaly similar to those of Divriği region plutons that can be related to feldspar fractionation. There are also some wide variation ranges in the contents of Th, Nb and Sr elements among which the upper limit of Th is remarkably high. The behaviour of Sr element in this diagram (Figure 5), showing a slight depletion by means of lower limit, can reflect the feldspar crystallization occurred in low temperatures. On the other hand, wide variation ranges in the contents of Th, Nb and Y elements, particularly with high upper limits, may also indicate a fractionation or crustal contamination, or low-degree partial melting of source material. The geotectonic discrimination diagrams, based on both the major and trace elements, reveal "late orogenic" (Figure 6) and WPG (Figure 7) settings for the Köseadağ pluton.

Hasançelebi pluton: This pluton comprises medium-grained syenitic rocks accompanied by lamprophyre dykes. The major components of these rocks are of alkali feldspar (orthoclase, albite, perthite)+ plagioclase(An_{25-30})+quartz+diopside. Quartz is always less than 7-8 % in mineralogical composition of syenitic rocks. K-feldspar constitutes more than 70-80 % of total feldspars. The rocks of Hasançelebi pluton include a wider variety of accessory minerals than the other plutons and include titanite, zircon, xenotime, monazite and apatite. They are plotted in the syenite and quartz syenite fields of the chemical nomenclature diagram (Figure 2) of Debon and Le Fort (1983). There are also some "altered magmatic rocks" (Yılmaz et al., 1993) in this pluton affected by scapolitization, albitization and carbonatization type of alteration. The samples collected from the Hasançelebi pluton describe an apparent alkaline character as seen in Figure 4. The depletions in the contents of Rb and K (Figure 5) are concordant with the albitization type of alteration. On the other hand, the high contents of Th, Nb, Zr and Y may be regarded to show a high degree fractionation of magma or low

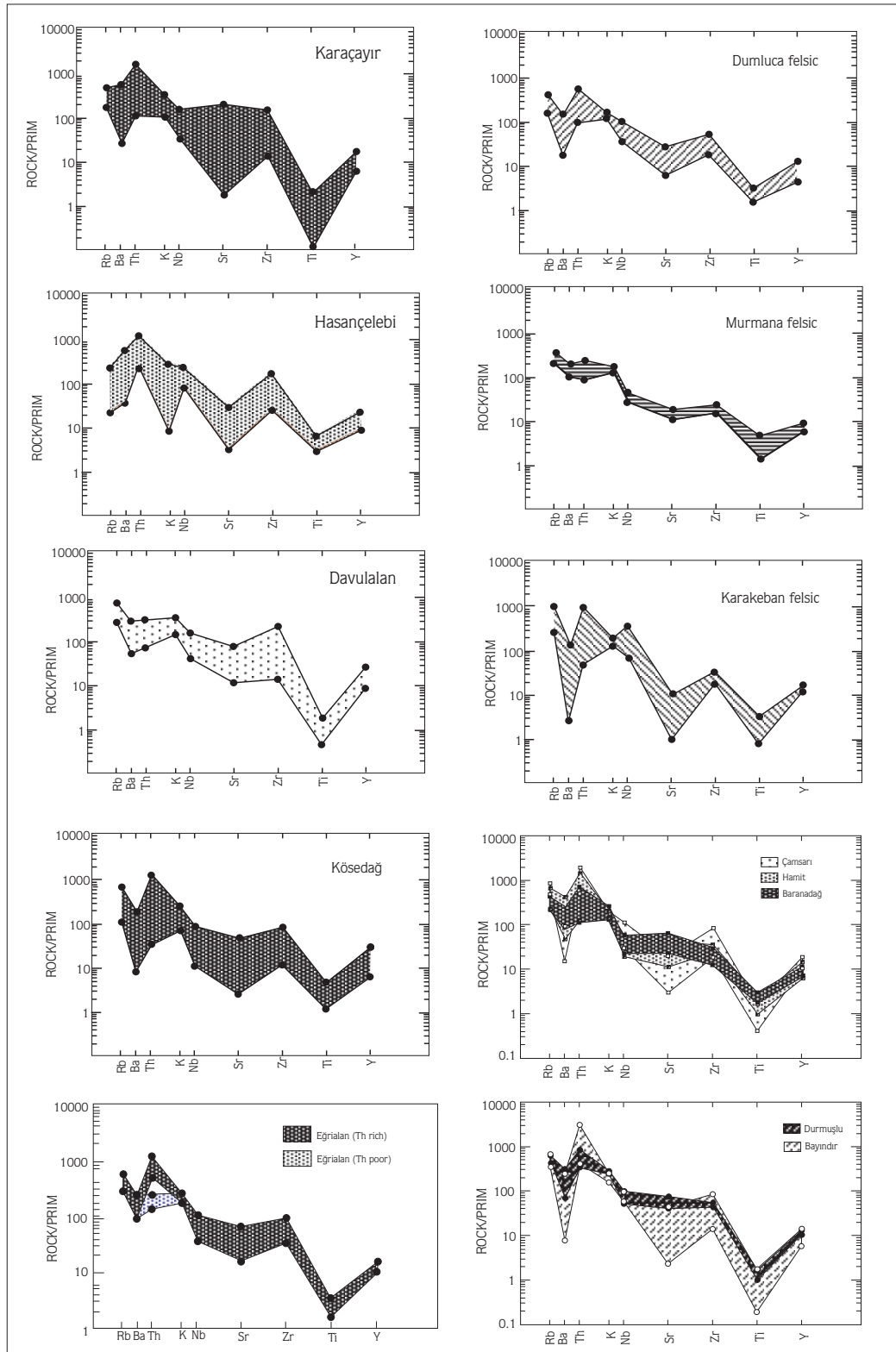


Figure 5. PRIM normalized trace element spider diagrams of the felsic pluton.

degree partial melting of source material during the magma genesis. Similar to the other plutons, major and trace elements geotectonic discrimination diagrams of Batchelor and Bowden (1985) and Pearce et al. (1984), respectively, show the late orogenic to anorogenic and WPG settings for the Hasançelebi pluton (Figures 6,7).

Karaçayır pluton: The commonest rock type of the Karaçayır pluton is medium- to coarse-grained syenites. The felsic components are K-feldspar (orthoclase, microcline and albite), plagioclase and nepheline minerals among which the microcline minerals are always associated with cataclastic zones that is considered to be formed by later cataclastic deformation. Microcline is easily distinguishable by polysynthetic twinning in two directions with twin lamellae are usually spindle shaped and extinction usually wavy which is so-called gridiron or quadrille structure as described by Kerr (1959). K-feldspar minerals are more than 80 % in total feldspars. Nepheline mineral, when it is present, is not more than 7-8 % of rock composition. The mafic minerals are represented by biotite, muscovite, secondary calcite and some accessory phases such as allanite, monazite, xenotime, apatite and opaque minerals. Some nephelines, recognizable only by their short prismatic pseudomorphs, are replaced by zeolite and sericite minerals by some deuteric alteration which also yields some secondary alteration minerals like muscovite, calcite and clayey components. Most of the biotites and muscovite flakes exhibit some evidences of the deuteric processes, for instance, all the biotites represent green color and muscovites show some well-preserved evidences for the derivation from the feldspar minerals, or crystallized from a late stage magmatic fluids because of having been associated with large calcite crystals. The euhedral large calcite minerals in this assemblage is assumed to be crystallized from late stage magmatic fluids, i.e. hydrothermal solutions, which is already interacted with marbles of crustal metasediments of basement rocks (Schuiling, 1961). There is also a third type of mica mineral in some syenites which is of typical phlogopite mineral on the basis of optical properties under the microscopy. Moreover, some syenites include fluorite minerals distinguishable even in hand specimen. All these mineralogical-petrographical data reflect that the Karaçayır syenite has been affected by deuteric alteration processes. This is also convenient with the observation of Schuiling (1961) who has found some thorianite minerals in some of these rocks. These microscopical identifications are also concordant with the chemical nomenclature diagram proposed by Debon and Le Fort (1983). As shown in Figure 2, the rock samples

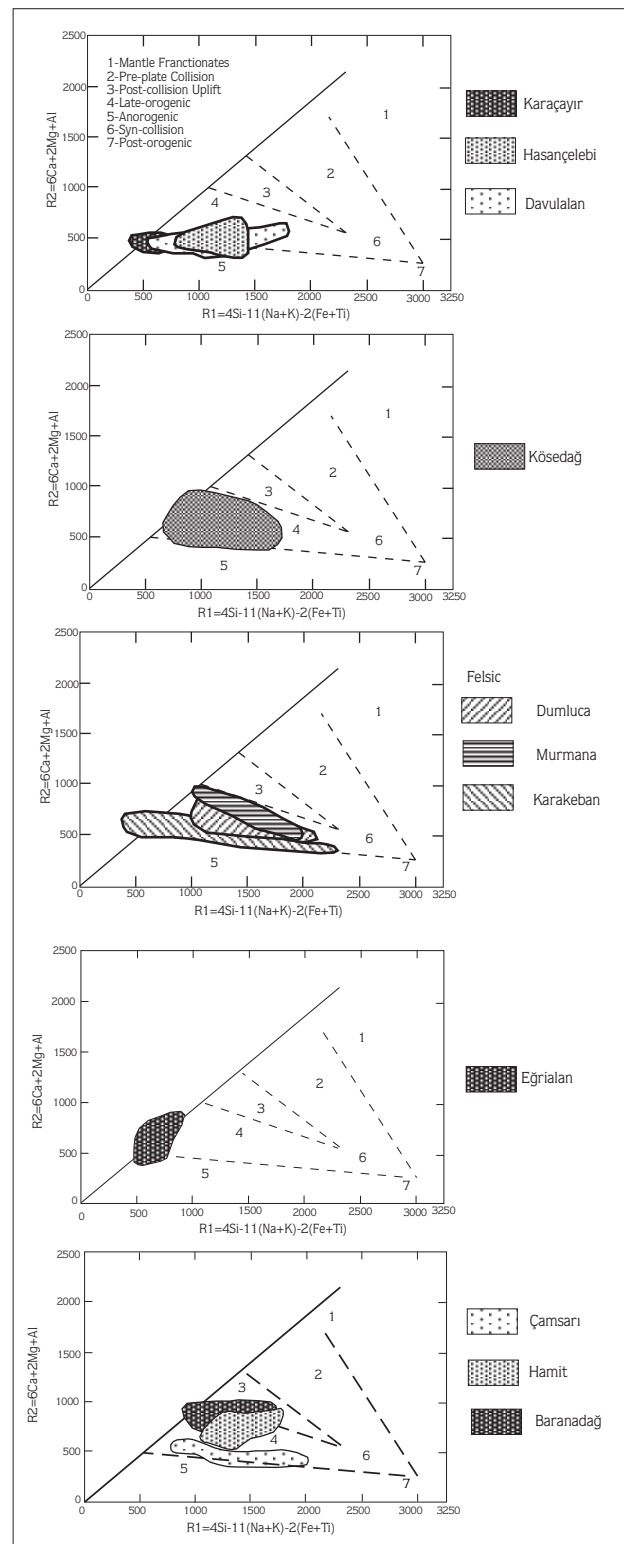


Figure 6. Major element geotectonic discrimination diagrams (Batchelor and Bowden, 1985) of the felsic and silica oversaturated alkaline plutons.

of the Karaçayır syenite are plotted mainly in the syenite and rarely in the feldspathoidal rocks subfields.

In addition to these mineralogical characteristics, the peraluminous chemistry of the Karaçayır syenite is attributed to the assimilation of wall-rocks which are of crustal metasediments of Kırşehir block (Boztuğ et al., 1996). On the other hand, the magma - wall-rock interaction has already been suggested in the genesis of this syenitic body, and even attributed to the formation of carbonatite-looking rocks in the Karaçayır pluton by Schuiling (1961). Similar to those of other plutons, Karaçayır pluton also exhibit alkaline composition in chemistry (Figure 4). The main trend of the PRIM normalized trace element spider diagram of the Karaçayır pluton resembles to that of Hasaңelebi pluton, however, its Sr and Ti depletion, and the Th enrichment is distinctly remarkable in Figure 5. Very less amounts of the contents of Sr and Ti are attributed to the mineralogical composition in which plagioclases and mafic minerals, accommodated the Sr and Ti, respectively, are found so less amounts in mineralogy. As for the enrichment of Th content, Schuiling (1961) has already determined the euhedral thorianite minerals (ThO_2) in the mode of accessory mineral in the Karaçayır pluton. The rock samples from the Karaçayır pluton are plotted in the late orogenic to anorogenic fields in Figure 6, and WPG field of Figure 7.

Davulalan pluton: It consists of a medium-grained syenitic stock and some porphyritic monzonitic vein rocks. Syenitic main stock is composed of medium-grained and pink colored rocks which are plotted mainly in the syenite and quartz syenite fields of the chemical nomenclature diagram (Figure 2). Monzonitic vein rocks, porphyritic in texture, fall in the monzonite field in Figure 2. The major felsic rock forming minerals of the syenitic body are orthoclase + plagioclase±quartz, in the absence of quartz, there is negligible amount of nepheline (less than 5 %) so that these rocks are plotted in the feldspathoidal part of Figure 2. The amount of K-feldspar is always more than that of plagioclase in syenites, but it is vice versa in monzonitic vein rocks. As for the mafic minerals, they are composed of hastingsite/arfvedsonite + biotite ± aegirine-augite assemblage. The mineralogical composition of the monzonitic vein rocks resemble to those of syenitic rocks, although, they differ from them by containing more plagioclase than orthoclase and, more augite than biotite minerals. As other plutons, the alkaline character of the Davulalan pluton is clearly observed in Figure 4. The PRIM normalized trace element distribution diagram is more restricted than those of Karaçayır and

Hasaңelebi plutons which also contain negligible amount of nepheline minerals, and associated with fluorite mineralization. However, there are some distinctive features in Figure 5, the Rb and K contents display sharper positive anomaly than that of Th. On the other hand, the most enriched elements are Zr and Y which may show crustal contribution, fractionation or very low degree of partial melting of the source material during magma formation. The late orogenic to anorogenic (Figure 6) and WPG (Figure 7) settings of the Davulalan pluton are very distinctive.

Eğrialan pluton: This pluton consists of medium-grained and coarse-grained syenitic rocks. Both types plot in the syenite field (Figure 2), however, a few rock samples, containing nepheline+altered feldspathoidal minerals in the actual mineralogical composition, take place in the feldspathoidal part of the Figure 2. The major felsic constituents of the medium- and coarse-grained syenites are mainly orthoclase + plagioclase (An_{32+40} on the basis of optical data), and sometimes, some negligible amounts of nepheline and altered feldspathoidal minerals in some rock samples. Orthoclase minerals may constitute 75-80 % of the total feldspars. In addition to fresh nepheline minerals, less than 6-7 % of mineralogical composition, feldspathoidal minerals altered to aggregates consisting of brownish colored platy zeolite + clay minerals + sericite. The mafic components are made up of riebeckite/arfvedsonite + aegirine + biotite, and some melanite type of garnet minerals in some samples. Garnet minerals are particularly observed to rim the aegirine minerals. The accessory minerals of these syenites are titanite, apatite, xenotime, monazite, allanite, zircon (especially in the form of inclusions within reddish-brown biotite flakes) and fluorite. Similar the other alkaline plutons, the alkaline nature of the Eğrialan syenitic body is clearly shown in Figure 4. The PRIM normalized trace element spider diagram of this pluton is also similar to those of other plutons shows enrichment in the Th, Nb, Zr and Y contents (Figure 5) which is consistent with the enriched accessory mineral contents. The Th enriched samples are the coarse-grained rocks including K-feldspar megacrysts and more biotite than other mafic minerals and associated with fluorite mineralization. In the R1-R2 diagram of Batchelor and Bowden (1985) Eğrialan syenite is mainly placed in the silica undersaturated field, however, a few samples are located next to late orogenic to anorogenic fields of Figure 6. On the other hand, trace element tectonic discrimination diagrams of Pearce et al. (1984) undoubtedly shows a WPG setting for the Eğrialan syenite (Figure 7).

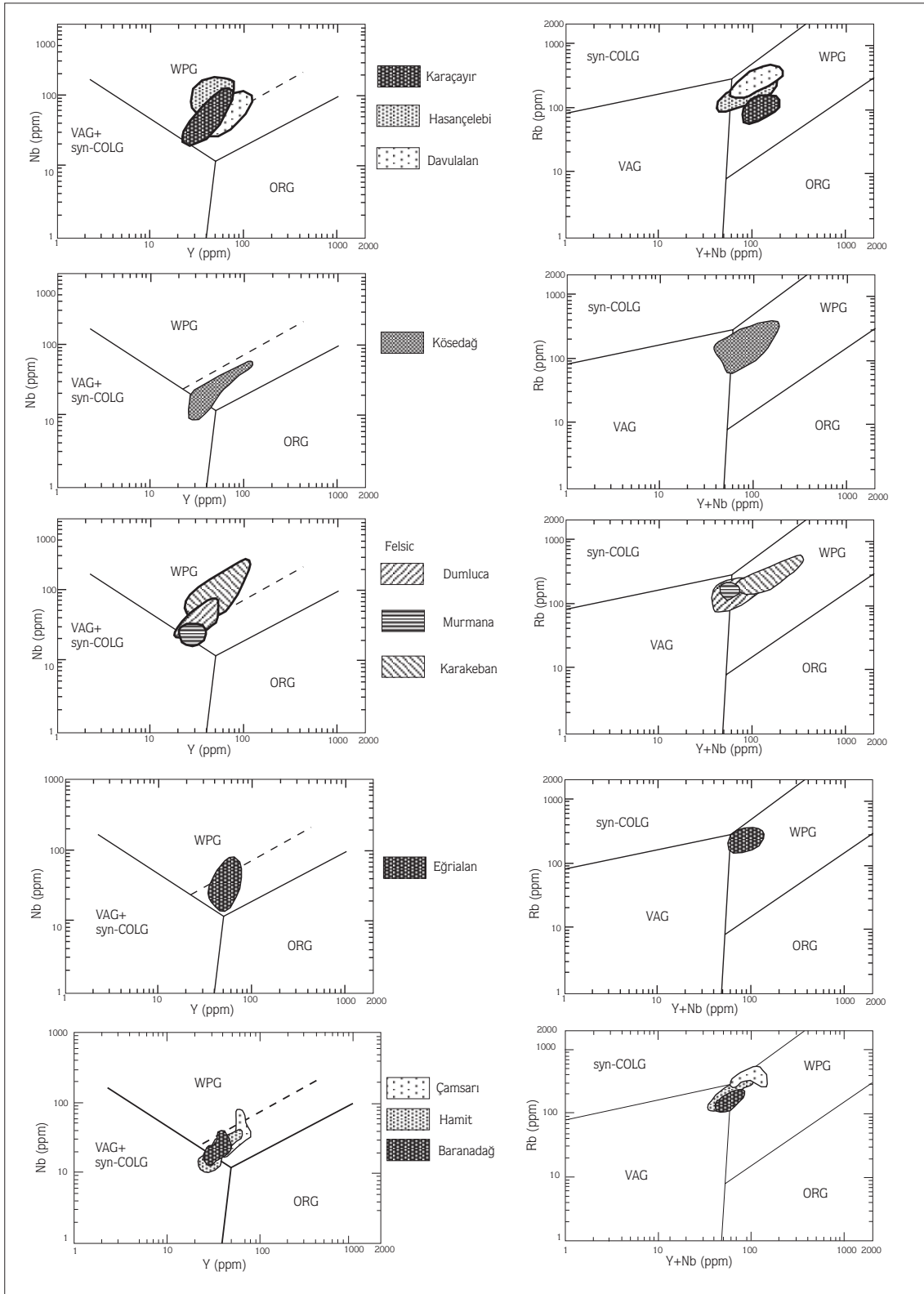


Figure 7. Trace element geotectonic discrimination diagrams (Pearce et al., 1984) of the felsic and silica oversaturated alkaline plutons.

Kaman region plutons: These plutons are subdivided into two subgroups such as silica oversaturated alkaline and undersaturated alkaline among which each subgroup is also subdivided into subunits on the basis of geological setting and mineralogical-chemical characteristics (Otlu and Boztuğ, 1997). The oversaturated alkaline subgroup consists of Baranadağ quartz monzonite, Hamit quartz syenite and Çamsarı quartz syenite; whereas undersaturated alkaline subgroup comprises Durmuşlu nepheline-nosean-melanite syenite porphyry and Bayındır nepheline-cancrinite syenite (Figure 1). The rock samples of Baranadağ quartz monzonite are mainly plotted in the quartz monzonite, and scarcely in the syenite-quartz syenite subfields of chemical nomenclature diagram of Debon and Le Fort (1983) (Figure 2). Hamit quartz syenite takes place in the quartz syenite and quartz monzonite fields, whereas the Çamsarı quartz syenite falls dominantly in the quartz monzonite, and subordinately in the monzogranite fields of Figure 2. Otlu and Boztuğ (1997) have studied the Kaman region plutons in detail, and concluded that the Baranadağ, Hamit and Çamsarı subunits were derived from the same magma by fractional crystallization process in which the first and last products are of Baranadağ and Çamsarı units, respectively. Consequently, the silica undersaturated alkaline plutons, consisting of Durmuşlu nepheline - nosean-melanite syenite porphyry and Bayındır nepheline-cancrinite syenite subunits (Figure 3), have been suggested to be solidified from an undersaturated magma (Otlu and Boztuğ, 1997).

The Baranadağ and Hamit subunits of the oversaturated alkaline subgroup display porphyritic texture with K-feldspar megacrysts, whereas the Çamsarı subunit typically shows fine to medium grained granular texture. Major felsic components of these units are represented by orthoclase+plagioclase+ quartz association. Proportion of plagioclase in total feldspar is more than 50-60 % in the monzonitic rocks, but less than 20-25 % in the syenitic rocks. The mafic constituents are made up of different assemblages like hastingsite±augite+biotite (Baranadağ), hastingsite+biotite±augite (Hamit) and hastingsite + biotite±fluorite (Çamsarı) minerals. Transformation of augite to biotite is a characteristic feature in thin sections under microscope. Durmuşlu and Bayındır subunits, that belong to the silica undersaturated alkaline subgroup, show porphyritic and granular textures, respectively. The porphyritic texture of Durmuşlu unit is particularly marked by the K-feldspar megacrysts. The groundmass of the porphyritic Durmuşlu unit is made up of feldspars, nepheline, cancrinite and fine-grained riebeckite/arfvedsonite and aegirine minerals.

The phenocrysts are of orthoclase, cancrinite, plagioclase, nepheline, riebeckite/arfvedsonite, aegirine and melanite. The accessory minerals are apatite, titanite, allanite, fluorite and xenotime. Nepheline and nosean minerals may constitute up to 20 % of rock composition. Orthoclase minerals are always more than plagioclase in total feldspars. The most characteristic feature, under the microscope, is that the aegirine minerals are enveloped by the melanite garnets.

The alkaline chemistry of the Kaman region plutons are clearly observed in Figure 4. PRIM normalized trace element spider diagram (Figure 5) indicates that the Ba, Sr and Ti contents of the Çamsarı quartz syenite are lower, and on the contrary, the contents of Rb, Th, Nb, Zr and Y are higher than those of Baranadağ and Hamit subunits. This can be considered as the evidence of fractionation from Baranadağ through Hamit to Çamsarı units. A similar relation is also accounted in the Durmuşlu and Bayındır subunits (Figure 5). Silica oversaturated alkaline plutons of the Kaman region clearly show post-collision uplift to late orogenic trends in Figure 6. Such a geological-geodynamic setting is also supplied by taking place in the WPG subfield of Figure 7.

Petrogenetic Discussion on the Diversification of Central Anatolian Alkaline Plutons

Geological-stratigraphical settings and mineralogical-chemical characteristics of the post-collisional alkaline plutons in Central Anatolia may easily led one to distinguish some subunits on the basis of criteria such as mineralogical-chemical features, type of the wall-rock, silica saturation and associated ore deposit/mineralization. The reasons of these subdivisions are thought to be naturally related to the variabilities in the processes which may modify the compositions of primary magmas, and related to the different types and degrees of partial melting of the same source material (i.e. enriched upper mantle) during magma genesis. For instance, the H₂O efficiency in the magma chamber is known to play an important role in the formation of silica oversaturated or undersaturated alkaline rocks during the solidification of any alkaline magma (Bonin, 1987, 1988, 1990). According to this author, if there is enough water in the partial melting zone of the upper mantle or lower crust, the partial melting yields typical calc-alkaline and hybrid magma. On the other hand, water deficiency and low-degree partial melting of upper mantle source which is already enriched by LIL and particularly F contents produces primary alkaline magmas (McKenzie and Bickle, 1988; Bonin, 1988). The solidification of these types of

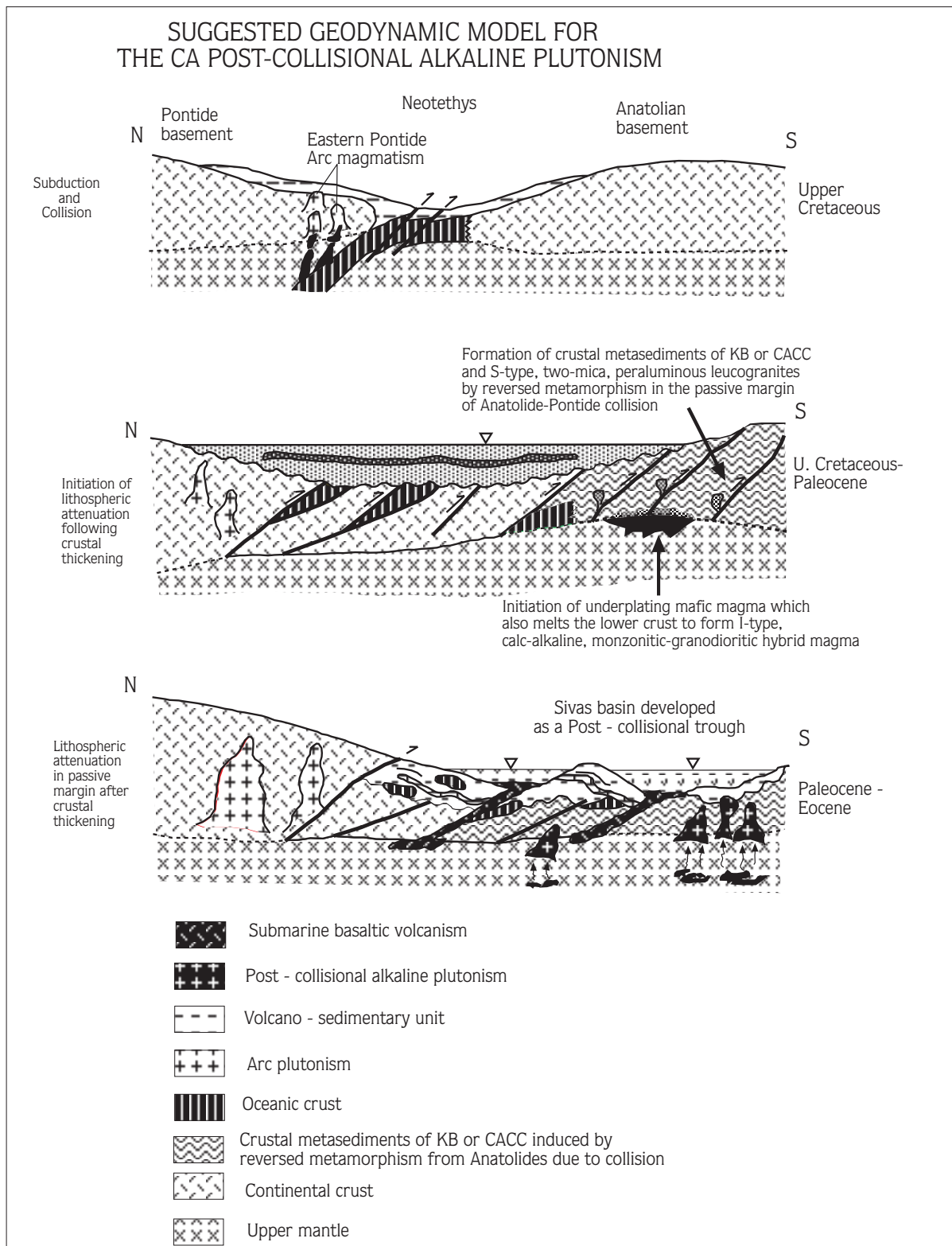


Figure 8. Suggested geodynamic evolutionary model for the CA post-collisional alkaline plutons.

magmas within the crust with high amount of water, i.e. water rich wall-rocks, causes the amphibole fractionation depending on the amount of diffusivity of water from wall-rocks into magma chamber. The residual magmatic liquid after the amphibole fractionation from such a magma may be of silica oversaturated alkaline in composition. On the contrary, if the wall-rocks of the magma chamber is poor in water content, the primary alkaline magma will create the alkaline rocks representing silica undersaturated alkaline trend (Bonin, 1987, 1988, 1990). Apart from the solidification processes modifying the primary composition of any alkaline magma as remarked by Bonin (1987, 1988, 1990) mentioned above, the primary composition of source material, the type and degree of partial melting process may also have important roles in the genesis and evolution of any alkaline magma. The importance of the composition of original source material and the variabilities in the partial melting conditions have been experimentally studied by Patino Douce (1996). Similarly, the importance of the type and degree of melting during the partial melting of any source material is also known to have considerable effects in the composition of resulting magmatic liquid (Wilson, 1989; Rollinson, 1993; Albarède, 1996). On the other hand, the batch and Rayleigh types of melting are assumed to be effective during the formation of the felsic and mafic magmas, respectively (Rollinson, 1993). In this respect, trace element content of a liquid derived from the Rayleigh melting of a mantle lherzolite with a partial melting degree more than 10 % distinctly differs from that of a liquid derived from the batch melting of the same source with the same degree of melting (Wilson, 1989, p.65).

By taking considerations all these theoretical backgrounds, one can suggest that the diversification, i.e. subdivisions, in the alkaline plutons in Central Anatolia may be sourced from the H₂O efficiency in the magma chamber during solidification as pointed out by Bonin (1987, 1988, 1990). In this circumstance, silica oversaturated alkaline trends in the Divriği region plutons and Köseadağ batholith can be induced by the amphibole fractionation due to high water content in magma chamber which may be infiltrated from the water rich wall-rocks, e.g. ophiolitic and volcano-sedimentary rocks, respectively, in the Divriği and Köseadağ districts. The silica undersaturated alkaline rocks of the Karaçayır, Davulalan and Bayındır plutons, intruding into medium-grade crustal metasediments and associated with fluorite mineralization, can be formed under the solidification conditions in which there was no enough water activity due presumably to emplacement within already

dehydrated and deformed crustal metasediments. On the other hand, when it is taken into account that another fluorite mine bearing pluton, namely Kuluncak part of Hasaңelebi pluton, intrudes Cretaceous-Lower Tertiary sediments of the post-collisional Hekimhan basin (Öztürk et al., 1996), the assumption related to water poor wall-rocks does not work well. Moreover, the Kuluncak (Hasaңelebi), Karaçayır and Davulalan plutons do not include only undersaturated rocks, but also oversaturated alkaline rocks. So that, instead of this assumption, i.e. the processes modifying the composition of any primary magma, it would be reasonable to take into account the originally derivation of the magmas of these plutons, consisting both of the silica oversaturated and undersaturated rocks with fluorite mine and high contents of LIL elements, under very low degree partial melting of mantle material under water deficiency condition as mentioned by McKenzie and Bickle (1988) and Bonin (1988). On the other hand, the magmas of mafic and felsic parts of the Divriği region plutons can be derived from different types and degrees of partial melting of the same mantle peridotites that a Rayleigh type of melting with a high degree and, subsequently, a batch melting with a low degree could yield the mafic/silica undersaturated and felsic/silica oversaturated alkaline magmas, respectively.

As the concluding remarks, the diversification of the alkaline plutons in Central Anatolia such as felsic/oversaturated, mafic/undersaturated and felsic/undersaturated with fluorite mine can be sourced from either the processes (i.e. H₂O efficiency in magma chamber) modifying the composition of any primary magma, or from the different primary magmas derived from mantle source by different types and degrees of partial melting under water poor conditions.

Geodynamic Interpretation

As pointed out in the introduction part of this paper, there are different suggestions on the evolutionary model of granitoids which have been summarized by Göncüođlu and Türelı (1994; p.39) as follow:

1. The southward emplacement of ophiolitic nappes (Bozkır ophiolitic nappes) from the İzmir-Ankara ocean has caused crustal thickening and metamorphism during Upper Campanian-Maastrichtian times. The subsequent northwards subduction of the Inner Tauride ocean beneath the crystalline complex, called Kırşehir block (Görür et al., 1984; Poisson, 1986) during Lower Paleocene-Eocene times initiated the calc-alkaline arc magmatism in the region (Şengör and Yılmaz, 1981).

2. The eastwards subduction of the Inner Tauride ocean during Paleocene-Early Eocene under the CACC created an Andean-type arc magmatism which produced the granitoids in the region (Görür et al., 1984).

3. The granitoids are formed by the Late Cretaceous collision of an ensimatic arc which is represented by Çiçekdağ igneous complex and numerous overthrust bodies with the main trunk of Central Anatolian Crystalline Complex (Göncüoğlu and Türel, 1994).

As clearly seen from all these data given above, there is no any agreement on the geodynamic and petrogenetic interpretation of calc-alkaline granitic plutonism, tholeiitic gabbroic plutonism and alkaline plutonism in Central Anatolia. Therefore, by taking into account all the existing literature data and particularly some most recent studies (Erlar and Göncüoğlu, 1996; Kadioğlu and Güleç, 1996; Yalıniz et al., 1996, 1997; Boztuğ et al., 1997; Ekici et al., 1997; Tatar and Boztuğ, 1997; Otlu and Boztuğ, 1997) in this region, and some benchmark studies on the alkaline rocks (Harris et al., 1986; Fitton and Upton, 1987; Liegois and Black, 1987; Bonin, 1990), the following geodynamic model is suggested in this paper (Figure 8).

There is a good synchronization between the granitic intrusion and metamorphism in Central Anatolia where both events are mainly Upper Cretaceous in age although, there are some radiometric ages on some granitoid plutons indicating Lower Cretaceous, e.g. Ağaören granitoid (Güleç, 1994); Murmana pluton (Zeck and Ünlü, 1987, 1988a, 1988b), and Lower Tertiary, i.e. Baranadağ pluton (Ayan, 1963) and Köseadağ batholith (Kalkancı, 1974). Such a time interval, ranging from Upper Cretaceous to Lower Tertiary, is interpreted as a normal duration for the evolution of a collision related magmatic episode, thus Bonin (1990) suggests a time span of 30-50 Ma for the evolution of collision zone magmatism. Moreover, the degree of metamorphism decreases from north to south (Erkan, 1981), i.e. from the collision zone (suture zone) towards the Taurus belt, in Central Anatolia. Thus, the synchronization of metamorphism and plutonism and the southward decreasing of metamorphic grade (Erkan, 1981) may be assumed that these events can be related to Upper Cretaceous collision of Anatolides and Pontides along the Ankara-Erzincan suture zone. The consumption of the northern branch of the Neo-Tethyan ocean with a northward subduction beneath the Pontide basement (Şengör and Yılmaz, 1981) and ophiolite obduction due to Anatolide-Pontide collision in Turkey should have been completed before the Maastrichtian (Figure 8). This is

because the allochthonous ophiolitic slabs derived from this suture zone are exposed and unconformably overlain by the Buldudere member (Yılmaz et al., 1993) containing *Orbitoides medius* (d'Archiac) fossils (determined by Dr. A. POISSON, Univ. of Paris-Sud, Orsay Cedex, France) in the Hekimhan-Hasançelebi area, SE Sivas, CA, Turkey. The metamorphic event could be created by an inverted metamorphism (Le Fort, 1986; Burg et al., 1994) which is induced by the juxtaposition of two plates along Ankara-Erzincan suture zone in Central Anatolia. During such a metamorphism, the overthrusting and related crustal thickening may cause to derive some syn-collisional granitic melts of S-type, peraluminous and two-mica granite in composition, e.g. the Yücebaça, Celaller, Üçkapılı and Sarıhacılı granitic plutons in Figure 1. In fact, such a petrogenetic interpretation has been firstly mentioned by Göncüoğlu (1986) for the genesis of Üçkapılı granitoid in Niğde massif. Erlar and Göncüoğlu (1996) also points out that the S-type and two mica granites in the Yozgat batholith are the oldest rocks. This leucogranitic association in Central Anatolia, regarded as syn-collisional magmatism, can be correlated with group II magmatism of Harris et al. (1986). Towards or at the end stages of crustal thickening, the lithospheric delaminations could generate underplating mafic magma which also melts the lowermost part of crust that yields voluminous post-collisional, calc-alkaline, I-type monzonitic-granodioritic hybrid association in Central Anatolia. This magmatic association may be regarded as the equivalent of group III magmatism of Harris et al. (1986). After the emplacement of this magmatic pulse, the tectonic regime could have been changed from compression to tension due to simple isostatic balance in the crust (Channel, 1986) that initiates the lithospheric attenuation. So, such a tectonic regime associated with lithospheric attenuation may cause the partial melting of the upwelled mantle material under the conditions of adiabatic decompression which produces post-collisional alkaline magma. This magmatic association in Central Anatolia is compared with group IV magmatism of Harris et al. (1986). During the formation of this alkaline magma, different magma pulses can be generated depending upon the different type and degree of partial melting of the enriched upper mantle source material under water poor conditions which causes diversification, i.e. formation of subdivisions, in the alkaline plutons. On the other hand, some processes modifying the composition of any primary magma could have been active during the solidification of magma which may also cause the diversification in the formation of alkaline plutons. This magma genesis

scenario is, in fact, convenient with the general geology in Central Anatolia that syn-collisional, S-type, peraluminous and two-mica leucogranites are always associated with medium to high grade crustal metasediments. Although, there is no any direct stratigraphic contact between these leucogranites and post-collisional I-type, hybrid, calc-alkaline voluminous monzonitic-granodioritic association, the alkaline rocks clearly cut the leucogranitic and monzonitic-granodioritic associations, i.e. they are the youngest intrusives.

Conclusion

The alkaline plutons constitute an important association in the post-collisional Central Anatolian granitoid plutonism (Göncüoğlu and Türeli, 1994; İlbeyli and Pearce, 1997). These plutons represent some subdivisions or diversifications by means of mineralogical-chemical characteristics, wall-rock, silica saturation and associated ore deposit/mineralization. This diversification could be generated by either some solidification processes

References

- Akıman, O., Erler, A., Göncüoğlu, M.C., Güleç, N., Geven, A., Türeli, T.K. and Kadoğlu, Y.K., 1993. Geochemical characteristics of granitoids along the western margin of the Central Anatolian Crystalline Complex and their tectonic implications. *Geological Journal*, 28, 371-382.
- Albarède, F., 1996. *Introduction to Geochemical Modeling*. Cambridge University Press, 543 p.
- Alpaslan, M. ve Boztuğ, D., 1997. The co-existence of the syn-COLG and post-COLG plutons in the Yıldızeli area (W-Sivas). *Turkish Journal of Earth Science*, 6, 1-12.
- Alpaslan, M., Guezou, J-C. ve Boztuğ, D., 1996. Yıldızeli (Sivas batısı) yöresinde Kırşehir kristalin temelinin tektono-stratigrafik özellikleri. Süleyman Demirel Üniv., IX. Mühendislik Sempozyumu, 29-31 Mayıs 1996, Jeoloji Mühendisliği Bildirileri Kitabı, 1-7, Isparta.
- Ataman, G., 1972. Ankara'nın güneydoğusundaki granitik-granodiyoritik kütlelerden Cefalıkdağ'ın radyometrik yaşı hakkında ön çalışma. *Hacettepe Fen ve Müh. Bil. Derg.*, 2, 1, 44-49.
- Avcı, N. and Boztuğ, D., 1993. Çaltı granitoidinin (İliç-Erzincan) petrolojisi. *Yerbilimleri*, 16, 167-192.
- Ayan, M., 1963. Contribution a l'étude pétrographique et géologique de la région située au nord-est de Kaman: M. T.A. Yayını, No.115, 332 s.
- Aydın, N.S., 1997. Yozgat batolitinin petrografisi, iz-element jeokimyası ve petrolojisi. Çukurova Üniversitesinde Jeoloji Mühendisliği Eğitiminin 20. Yılı Sempozyumu, Bildiri Özleri, 243-244, 30 Nisan-3 Mayıs 1997, Adana, Türkiye.

which modify the primary composition of any mantle-derived alkaline magma, or some different alkaline magma pulses derived from the partial melting of the same mantle material with the different types and degrees of partial melting under water poor conditions.

Acknowledgement

Dr. J.A. Pearce (University of Durham, England) has read and improved the original manuscript. Dr. B. Bonin (Univ. Paris-Sud, France) and Dr. J.P. Liégeois (Musée Royal de l'Afrique Centrale, Tervuren, Belgique) have considerably reviewed and recommended some major revisions in the preliminary manuscript. I would like to especially thank these two geoscientists who made possible to appear this paper. An anonymous referee from the Tr. J. of Earth Sciences has constructively criticised the manuscript. Dr. K. Govindaraju (CRPG, Nancy) is also thanked for some major, trace and REE analyses in his laboratory.

Aydın, N.S., Göncüoğlu, C.M. and Erler, A., 1997. Granitoid magmatism in Central Anatolia. Proceeding of TÜBİTAK-BAYG/NATO-D Programme on Alkaline Magmatism (Theoretical Consideration and A Field Excursion in Central Anatolia), 202, 2-10 October 1997, Dept. of Geology, Cumhuriyet University, Sivas, Turkey.

Barbarin, B., 1990. Granitoids: main petrogenetic classifications in relation to origin and tectonic setting. *Geological Journal*, 25, 227-238.

Barbarin, B., and Didier, J., 1992. Genesis and evolution of mafic microgranular enclaves through various types of interaction between coexisting felsic and mafic magmas. *Transactions of the Royal Society of Edinburgh: Earth Sciences*, 83, 145-153.

Batchelor, B. and Bowden, P., 1985. Petrogenetic interpretation of granitoid rock series using multicationic parameters. *Chemical Geology*, 48, 43-55.

Bayhan, H., 1990. Ortaköy granitoidinin (Tuzgölü doğusu) mineralojik-petrografik ve jeokimyasal özellikleri. TÜBİTAK Projesi Raporu, TBAG-841, 150 s. (yayınlanmamış), Ankara.

Bayhan, H. and Tolluoğlu, A.Ü., 1987. Çayağzı siyenitoidinin (Kırşehir kuzeybatısı) mineralojik-petrografik ve jeokimyasal özellikleri. *Yerbilimleri*, 14, 109-120.

Bingöl, E., 1989. 1/2.000.000 ölçekli Türkiye Jeoloji Haritası, MTA Yayını, Ankara.

Bonin, B., 1987. Reflexions a propose de la repartition des granitoides les massifs cristallins externes des alpes françaises. *Geologie Alpine*, 63, 137-149.

- Bonin, B., 1988, From orogenic to anorogenic environments: evidence from associated magmatic episodes. *Schweiz. Mineral. Petrogr. Mitt.* 68, 301-311.
- Bonin, B., 1990, From orogenic to anorogenic settings: evolution of granitoid suites after a major orogenesis. *Geological Journal*, 25, 261-270.
- Boztuğ, D., Yılmaz, S. and Öztürk, A., 1994a, Post-collisional alkaline plutonism in the Central-Eastern Anatolia, Turkey. *International Volcanological Congress, IAVCEI'94, 12-16 September 1994, METU-Ankara, Turkey, Abstract Volume, Theme 1, Collision Related Magmatism.*
- Boztuğ, D., Yılmaz, S. and Kesgin, Y., 1994b, İç-Doğu Anadolu alkalin provensindeki Köseadağ plütunu (Suşehri-KD Sivas) doğu kesiminin petrografisi, petrokimyası ve petrojenezi. *Türkiye Jeoloji Bülteni*, 37/2, 1-14.
- Boztuğ, D., Yılmaz, S. and Alpaslan, M., 1996, The Karaçayır syenite, North of Sivas: An A-type, peraluminous and post-collisional alkaline pluton, Central Anatolia, Turkey. *Bulletin of the Faculty of Engineering, Cumhuriyet University, Series A - Earth Sciences*, 13/1, 141-153.
- Boztuğ, D., Debon, F., Inan, S., Tutkun, S.Z., Avcı, N. and Kesgin, Ö., 1997, Comparative geochemistry of four plutons from the Cretaceous-Palaeogene Central-Eastern Anatolian alkaline province (Divriği region, Sivas, Turkey). *Turkish Journal of Earth Sciences*, 6, 95-115.
- Boztuğ, D., Yağmur, M., Otlu, N., Tatar, S. and Yeşiltaş, A., 1998, Petrology of the post-collisional, within-plate Yıldızdağ gabbroic pluton, Yıldızeli-Sivas region, CA, Turkey. *Turkish Journal of Earth Sciences*, 7, 37-51.
- Burg, J.P., Delor, C.P., Leyrelop, A.F. and Romney, F., 1994, Inverted metamorphic zonation and Variscan thrust tectonics in the Reurgue area (Masif Central, France): P-T-t record from mineral to regional scale. In: Daly, J.S., Cliff, R.A. and Yardley, B.W.D. (eds), *Evolution of Metamorphic Belts*, *Geol. Soc. Spec. Publ.*, 43, 423-439.
- Cater, J.M.L., Hanna, S.S., Ries, A.C. and Turner, P., 1991, Tertiary evolution of the Sivas basin, Central Turkey. *Tectonophysics*, 195, 29-46.
- Channel, J.E.T., 1986, Palaeomagnetism and continental collision in the Alpine belt and the formation of late-tectonic extensional basins. In: Coward, M.P. and Ries, A.C., (eds.), *Collision Tectonics*, *Geological Society Special Publication No. 19*, 261-284.
- Coward, M.P., and Ries, A.C., 1986 (eds.), *Collision Tectonics*. *Geological Society Special Publication No. 19*, Blackwell, 415 p.
- Debon, F. and Le Fort, P., 1983, A chemical-mineralogical classification of common plutonic rocks and associations. *Transactions of the Royal Society of Edinburgh: Earth Sciences*, 73, 135-149.
- Ekici, T., Boztuğ, D., Tatar, S. and Otlu, N., 1997, The co-existancy of the syn-COLG and post-COLG granitoids in the Yozgat batholith from passive margin of the Anatolide-Pontide collision. *EUG-9, Strasbourg-France, 23-27 March 1997, Symposium 55: Post-Collisional Magmatism, Abstracts*, 503.
- Erkan, Y., 1981, Orta Anadolu masifinin metamorfizması üzerinde yapılmış çalışmalarda varılan sonuçlar. *İç Anadolu'nun Jeolojisi Sempozyumu, Türkiye Jeoloji Kurumu 35 Bil. ve Tek. Kurultayı*, 9-11, Ankara.
- Erkan, Y., and Ataman, G., 1981, Orta Anadolu Masifi (Kırşehir yöresi) metamorfizma yaşı üzerine K-Ar yöntemi ile bir inceleme. *Yerbilimleri*, 8, 27-30.
- Erlor, A. ve Bayhan, H., 1995, Orta Anadolu Granitoidleri' nin genel değerlendirilmesi ve sorunları. *Yerbilimleri* 17, 49-67.
- Erlor, A. and Göncüoğlu, M.C., 1996, Geologic and tectonic setting of the Yozgat batholith, Northern Central Anatolian Crystalline Complex, Turkey. *International Geology Review*, 38, 8, 714-726.
- Fitton, J.G. and Upton, B.G.J., 1987 (eds.), *Alkaline Igneous Rocks*. *Geological Society Spec. Publ. No 3*, Blackwell, 568 p.
- Geven, A., 1995, Cefalıkdağ granitoidinin petrografi ve jeokimyası (Orta Anadolu kristalen kütle batısı). *Yerbilimleri*, 17, 1-16.
- Göncüoğlu, M.C., 1986, Geochronological data from the southern part (Niğde area) of the Central Anatolian Massif. *Mineral Research and Tecnical Institute of Turkey (MTA) Bulletin*, 105/106, 83-96.
- Göncüoğlu, M.C., Toprak, V., Erlor, A. and Kuşçu, I., 1991, Orta Anadolu batı kesiminin jeolojisi, Bölüm I, Güney Kesim. *TPAO Rap. No 2909*, 176 pp. (yayınlanmamış).
- Göncüoğlu, M.C., Toprak, V., Olgun, E., Kuşçu, I., Erlor, A., and Yalınız, K., 1993, Tertiary Evolution of Central Kızılırmak Basin. 8th Meeting, *Assoc. European Geological Soc.*, 19-26 Sept., Budapest, Abstracts, 19.
- Göncüoğlu, M.C. and Türel, K.T., 1993, Orta Anadolu ofiyoliti plajiyogranitlerinin petrolojisi ve jeodinamik yorumu (Aksaray-Türkiye). *Doğa Türk Yerbilimleri Dergisi*, 2, 195-203.
- Göncüoğlu, M.C. ve Türel, T.K., 1994, Alpine collisional-type granitoids from Western Central Anatolian Crystalline Complex, Turkey. *Jour. of Kocaeli Univ., Earth Sci.*, 1, 39-46.
- Göncüoğlu, M.C., Köksal, S. and Floyd, P.A., 1995, Post-collisional magmatism in the Central Anatolian Crystalline Complex: Geochemical features of İdişdağı alkaline intrusives (Avanos, Central Anatolia) as a case study. *International Earth Sciences Colloquium on the Aegean Region, IESCA-1995, İzmir-Güllük, Turkey, 9-14 October 1995, Program and Abstracts*, 21.
- Göncüoğlu, M.C., Köksal, S. and Floyd, P.A., 1997, Post-collisional A-type magmatism in the Central Anatolian Crystalline Complex: Petrology of the İdiş dağı Intrusives (Avanos, Turkey). *Turkish Journal of Earth Sciences*, 6, 65-76.
- Görür, N., Oktay, F.Y., Seymen, I. and Şengör, A.M.C., 1984, Paleotectonic evolution of the Tuzgölü basin complex, Central Turkey: Sedimentary record of a Neo-tethyan closure. In: Dixon, J.E. and Robertson, A.H.F., (eds.), *The Geological Evolution of the Eastern Mediterranean*, *Blackwell Sci. Publ.*, Edinburgh, 467-482.

- Güleç, N., 1994, Rb-Sr isotope data from the Ağaören granitoid (East of Tuz Gölü): Geochronological and genetical implications. *Turkish Journal of Earth Sciences*, 3, 39-43.
- Gündoğdu, M.N., Bros, R., Kuruç, A. and Bayhan, H., 1988, Rb-Sr wholerock systematic of the Bayındır feldspathoidal syenites (Kaman-Kırşehir). Symposium for the 20th Anniversary of Earth Sciences at Hacettepe University, October 25-27, Abstracts. 55, Beytepe-Ankara.
- Harris, N.B.W., Pearce, J.A. and Tindle, A.G., 1986, Geochemical characteristics of collision-zone magmatism. In: Coward, M.P. and Ries, A.C. (eds.), *Collision Tectonics*, Geological Society Special Publication No 19, 67-81.
- Hibbard, M.J., 1995, *Petrography to petrogenesis*. Prentice Hall, 587 p.
- İlbeyli, N. ve Pearce, J., A., 1997, Petrogenesis of the collision-related Anatolian Granitoids, Turkey. *European Union of Geosciences (EUG) 9*, Strasbourg - France, 502.
- Kadioğlu, Y.K. and Güleç, N., 1996, Mafic microgranular enclaves and interaction between felsic and mafic magmas in the Ağaören intrusive suite: Evidence from petrographic features and mineral chemistry. *International Geology Review*, 38, 854-867.
- Kalkancı, Ş., 1974, Etude géologique et pétrochimique du sud de la région de Suşehri. Géochronologie du massif syénitique de Köseadağ (NE de Sivas-Turquie). Thèse de doctorat de 3ème cycle, L'Université de Grenoble, 135 p.
- Kerr, P.F., 1959, *Optical mineralogy*. McGraw-Hill, New York, 442 p.
- Le Fort, P., 1986, Metamorphism and magmatism during the Himalayan collision. In: M. P. Coward and A. C. Ries (eds.), *Collision Tectonics*, Geol. Soc. London Spec. Publ., 19, 159-172.
- Liégeois, J. P. and Black, R., 1987, Alkaline magmatism subsequent to collision in the Pan-African belt of the Adrar des Iforas (Mali). *Alkaline Igneous Rocks*. In: Fitton J.G. and Upton B.G.J. (Eds.), Geological Society Spec. Publ. No 3, Blackwell, 381-401.
- Mason, R., 1985, Ophiolites. *Geology Today*, Sept.-Oct. 1985, 136-140.
- McKenzie, D.P. and Bickle, M.J., 1988, The volume and composition of melt generated by extension of the lithosphere, *Journal of Petrology*, 29, 625-679.
- Otlu, N. ve Boztuğ, D., 1997, İç Anadolu alkali plütonizmasındaki Kortundağ ve Baranadağ plütonlarında (D Kaman- KB Kırşehir) silisçe aşırı doymun (ALKOS) ve silisçe tüketilmiş alkali (ALKUS) kayaç birlikteliği. *Geosound*, 30, 779-805.
- Özkan, H.M. and Erkan, Y., 1994, A petrological study on a foid syenite intrusion in Central Anatolia (Kayseri, Turkey). *Turkish Journal of Earth Sciences*, 3, 45-55.
- Öztürk, A., Boztuğ, D., Yalçın, H., İnan, S., Gürsoy, H., Bozkaya, Ö., Yılmaz, S., Uçurum, A., 1996, Hekimhan (KB Malatya) ve Kangal (GD Sivas) Yörelerinde Mevcut Maden Yataklarının Jeolojik ve Madencilik Açısından Değerlendirilmesi Çalışmaları. Cilt.1 Jeolojik Etüdü. 186 s. (yayınlanmamış), Sivas.
- Patino Douce, A.E., 1996, Effects of pressure and H₂O content on the compositions of primary crustal melts. *Transactions of the Royal Society of Edinburgh: Earth Sciences*, 87, 11-21.
- Pearce, J.A., Harris, N.B.W. and Tindle, A.G.W., 1984, Trace element discrimination diagrams for the tectonic interpretation of granitic rocks. *Journal of Petrology*, 25, 956-983.
- Poisson, A., 1986, Anatolian micro-continents in the Eastern Mediterranean context: The neo-Tethysian oceanic troughs. *Sci. de la Terre, Mém.*, 47, 311-328.
- Rickwood, P.C., 1989, Boundary lines within petrologic diagrams which use oxides of major and minor elements. *Lithos*, 22, 247-263.
- Rollinson, H.R., 1993, *Using geochemical data: Evaluation, presentation, interpretation*. Longman Scientific and Technical, John Wiley and Sons, 352 p.
- Schulling, R.D., 1961, Formation of pegmatitic carbonatite in a syenite-marble contact. *Nature*, 192, 1280.
- Streckeisen, A., 1976, To each plutonic rock its proper name. *Earth. Sci. Rev.*, 12, 1-33.
- Şengör, A.M.C. and Yılmaz, Y., 1981, Tethyan evolution of Turkey: A plate tectonic approach. *Tectonophysics*, 75, 181-241.
- Tatar, S. ve Boztuğ, D., 1997, Yozgat batoliti GB kesiminde (Şefaatli-Yerköy arası) FC ve magma mingling/mixing süreçlerinin kanıtları. Çukurova Üniv. Jeoloji Müh. Eğitiminin 20. Yılı Semp., *Geosound*, 30, 539-562.
- Türel, T.K., Göncüoğlu, M.C. and Akıman, O., 1993, Origin and petrology of Ekecikdağ granitoid in Western Anatolian Crystalline Massif. Symposium for the 25th Anniversary of Earth Sciences at Hacettepe University, November 15-17, 1993, Beytepe-Ankara, Abstracts, 45-46.
- Wilson, M., 1989, *Igneous Petrogenesis*, Unwin Hyman, London, p. 456.
- Yalıniz, M.K., Floyd, P.A., and Göncüoğlu, M.C., 1996, Supra-subduction zone ophiolites of Central Anatolia: geochemical evidence from the Sankaraman Ophiolite, Aksaray, Turkey. *Mineralogical Magazine*, 60, 402, 697-710.
- Yalıniz, M.K., Floyd, P.A. and Göncüoğlu, M.C., 1997, Geochemistry and petrogenesis of intrusive and extrusive ophiolitic plagiogranites, Central Anatolian Crystalline Complex, Turkey. *Lithos*, 42, 225-241.
- Yılmaz, A., 1994, An example of post-collisional trough: Sivas basin, Turkey. 10th Petroleum Congress of Turkey, April 11-15, 1994, Ankara, Proceedings, 21-33 (in Turkish).
- Yılmaz, S. and Boztuğ, D., 1991, Petrology of the Hasançelebi syenitic pluton from the "Central-Eastern Anatolian Alkaline Province". Hekimhan-Malatya district, Turkey. *EUG VI, Terra Abstracts*, p.246, Strasbourg.
- Yılmaz, S., Boztuğ, D. and Öztürk, A., 1993, Geological setting, petrographic and geochemical characteristics of the Cretaceous and Tertiary igneous rocks in the Hekimhan-Hasançelebi area, north-west Malatya, Turkey. *Geological Journal*, 28, 383-398.

Yılmaz, S. ve Boztuğ, D., 1997, Çiçekdağ (Kuzey Kırşehir) intrüzif kompleksinin petrojenezi. C.Ü. Araştırma Fonu Raporu, Rap. No M-90, 27 s. (yayınlanmamış), Sivas.

Zeck, H.P. and Ünlü, T., 1987, Parallel wholerock isochrons from a composite, monzonitic pluton, Alpine belt, Central Anatolia, Turkey. Neues Jahrb. Mineral. Monatsh., 1987, 193-204.

Zeck, H.P. and Ünlü, T., 1988a, Alpine ophiolitic obduction before 110 ± 5 Ma ago, Taurus belt, eastern central Turkey. Tectonophysics, 145, 55-62.

Zeck, H.P. and Ünlü, T., 1988b, Murmano plütununun yaşı ve ofiyolitle olan ilişkisi (Divriği-Sivas). MTA Dergisi, 108, 82-97.

Zeck, H.P. and Ünlü, T., 1991, Orta Anadolu'nun doğusunda yer alan şoşonitik, monzonitik Murmano plütunu- ön çalışma. MTA Dergisi, 112, 103-115.