

1-1-2021

Protective and therapeutic effect of hydrogen sulfide on hemorrhagic cystitis and testisdysfunction induced with cyclophosphamide

FİKİRİYE YASEMİN ÖZATİK

ORHAN ÖZATİK

YASEMİN TEKŞEN

SEMRA YİĞİTASLAN

NEZİHA SENEM ARI

Follow this and additional works at: <https://journals.tubitak.gov.tr/medical>

 Part of the [Medical Sciences Commons](#)

Recommended Citation

ÖZATİK, FİKİRİYE YASEMİN; ÖZATİK, ORHAN; TEKŞEN, YASEMİN; YİĞİTASLAN, SEMRA; and ARI, NEZİHA SENEM (2021) "Protective and therapeutic effect of hydrogen sulfide on hemorrhagic cystitis and testisdysfunction induced with cyclophosphamide," *Turkish Journal of Medical Sciences*: Vol. 51: No. 3, Article 78. <https://doi.org/10.3906/sag-2003-10>

Available at: <https://journals.tubitak.gov.tr/medical/vol51/iss3/78>

This Article is brought to you for free and open access by TÜBİTAK Academic Journals. It has been accepted for inclusion in Turkish Journal of Medical Sciences by an authorized editor of TÜBİTAK Academic Journals. For more information, please contact academic.publications@tubitak.gov.tr.

Protective and therapeutic effect of hydrogen sulfide on hemorrhagic cystitis and testis dysfunction induced with cyclophosphamide

Fikriye Yasemin ÖZATİK^{1*}, Orhan ÖZATİK², Yasemin TEKŞEN¹, Semra YİĞİTASLAN³, Nezih Senem ARI⁴

¹Department of Pharmacology, Faculty of Medicine, Kütahya Health Sciences University, Kütahya, Turkey

²Department of Histology and Embriology, Faculty of Medicine, Kütahya Health Sciences University, Kütahya, Turkey

³Department of Pharmacology, Faculty of Medicine, Eskişehir Osmangazi University, Eskişehir, Turkey

⁴Department of Histology and Embriology, Evliya Celebi Training and Research Hospital, Kütahya Health Sciences University, Kütahya, Turkey

Received: 05.03.2020 • Accepted/Published Online: 06.02.2021 • Final Version: 28.06.2021

Background/aim: Cyclophosphamide (CP) is a drug used for treatment of many malignant diseases. However, it can cause serious side effects such as hemorrhagic cystitis and male infertility. Hydrogen sulfide (H₂S) is a gaseous mediator and is suggested to have antioxidant, antiinflammatory, and antiapoptotic effects. In this study, dose-dependent effects of H₂S donor sodium hydrosulfide (NaHS) on cyclophosphamide-induced hemorrhagic cystitis and testicular dysfunction were investigated in rats.

Material and methods: Rats were divided into 5 groups (n = 8): control, CP, NaHS25 µmol/kg, NaHS50 µmol/kg, and NaHS100 µmol/kg. After treatment for 7 days intraperitoneally (ip), a single ip dose of CP 200 mg/kg was given on the 8th day. Then, treatment was continued for 7 days. In bladder and testicular tissues, IL 6, IL 10, cGMP, NO, H₂S, FSH, LH, and testosterone levels were measured by ELISA. Histopathological examination with H&E staining, as well as immunohistochemical staining for acrolein in bladder and caspase-3 and APAF-1 in testis were performed.

Results: NaHS prevented the increased IL 6 and IL 10 values induced by CP as well as prevented the decrease in cGMP values associated with CP. There was no significant change in FSH values, but the LH value, which increased with CP, decreased with 25, 50, and 100 µmol/kg NaHS. In contrast, testosterone decreased in the CP group and increased in the treatment groups. NaHS was effective in many biochemical and histopathological parameters at 25 and 50 µmol/kg doses, and this effect decreased at 100 µmol/kg dose.

Conclusion: H₂S has a protective and therapeutic effect on hemorrhagic cystitis and testicular dysfunction induced by cyclophosphamide. It can be suggested that H₂S is a promising molecule in facilitating cancer treatment.

Key words: Cyclophosphamide, hydrogen sulfide, testis, bladder

1. Introduction

Cyclophosphamide (CP) is currently still an antineoplastic used for treatment of many malignant diseases [1]. However, in addition to the necessity for its use, it causes serious and uncomfortable side effects in patient. Hemorrhagic cystitis and testis injury in males may be listed among these side effects [2]. Hemorrhagic cystitis is a painful disease causing many problems for the patient and unfortunately it is frequently observed during cyclophosphamide treatment [3]. The side effects of the drug are reported to be due to the active metabolite of acrolein [3]. Acrolein is excreted in urine [4,5]. As a result, the organ with most exposure to this metabolite is the bladder. During treatment with cyclophosphamide, epithelial edema, ulceration, hemorrhage and leukocyte

infiltration are commonly observed in the bladder [4–6]. At the same time, there are studies stating that cyclophosphamide negatively affects fertility [7,8]. Many male cancer patients apply for sperm freezing procedures before beginning treatment to maintain reproductive capability. This is a sad and troubling situation for these people. This effect, observed as a side effect of CP in humans, is the same in experimental animals. As a result, many studies have used CP as a model with the aim of inducing hemorrhagic cystitis in experimental animals. Hydrogen sulfide (H₂S) is a mediator with gas structure and is produced by mammalian tissue. H₂S is synthesized from L-cysteine by two pyridoxal 5-phosphate linked enzymes, in other words cystathionine β synthase (CBS) and cystathionine γ lyase (CSE), and an enzyme

* Correspondence: fyoizatik@hotmail.com

independent of phosphate 3-mercaptopyrine sulfur transferase (3-MST). H₂S is reported to affect processes like apoptosis, inflammation, angiogenesis, proliferation, metabolism, oxygen sensitivity, and oxidative stress [9,10]. H₂S is thought to play an important role in formation of visceral pain. However, antinociceptive effects have been identified. This is thought to occur through endogenous H₂S upregulation by CSE via activation of the Ca (v) 3.2 channel, one of the Ca (+2) channels [11]. The analgesic effect is thought to be linked to opening of the K (ATP) channels [12]. Many studies have shown that H₂S prevents inflammation and oxidative stress in ischemia/reperfusion injury and may have therapeutic effect in many organs and metabolic diseases. Additionally, there are studies which found H₂S relaxed the corpus cavernosum in rabbits and increased intracavernosal pressure in animals [13,14]. Additionally, it was shown to induce the same effects in the human corpus cavernosum [15]. These effects are thought to occur through L-cysteine amino acid. In fact, in a study by La Fuente et al. H₂S relaxed penile arterial and cavernous tissues in males with erectile dysfunction and they presented evidence that these effects occurred with L-cysteine mediation. The researchers proved that H₂S contributed to cGMP production [16].

CP is a promising medication for many cancer patients and considering it is frequently used for this type of patient, the lack of observation of side effects will suit patients in terms of quality of life. In fact, serious side effects may represent a reason for patients to abandon this medication or leave them struggling with side effects due to necessity. H₂S may be promising in terms of protecting patients from these side effects or preventing the occurrence of side effects.

Based on all this information, this study aimed to investigate the therapeutic and protective effects of H₂S against hemorrhagic cystitis and testicular injury, serious side effects of the cancer drug cyclophosphamide, in male rats.

2. Materials and methods

2.1. Experimental animals and groups

In this study, 40 male Sprague Dawley rats weighing 240–280 g were used. The rats were housed at room temperature (24 ± 2 °C) with fixed limits of 55% ± 15% relative humidity and 12 h/12 h light/dark cycle. Water and standard rat feed were administered ad libitum. All procedures related to animals were completed in accordance with national and international regulations about animal experiments. The study was completed in Dumlupınar University Experimental Animals Breeding Research and Application Center and Dumlupınar University Advanced Technologies Design, Research and Development Center.

The experimental study groups were organized as follows (n = 8):

CP: cyclophosphamide, PS: physiologic serum, NaHS: sodium hydrosulfide H₂S donor.

Subjects were used with the following aims.

Group 1 (Control): 0.2 mL PS intraperitoneal (ip) for 15 days duration.

Group 2 (CP): 0.2 mL PS ip 7 days before and 7 days after + 200 mg/kg ip single dose CP on the 8th day.

Group 3 (CP + NaHS25): 25 µmol/kg NaHS ip 7 days before and 7 days after + 200 mg/kg ip single dose CP on the 8th day.

Group 4 (CP + NaHS50): 50 µmol/kg NaHS ip 7 days before and 7 days after + 200 mg/kg ip single dose CP on the 8th day.

Group 5 (CP + NaHS100): 100 µmol / kg NaHS ip 7 days before and 7 days after + 200 mg/kg ip single dose CP on the 8th day.

Control group rats were administered 0.2 mL PS. The cyclophosphamide group were administered 0.2 mL PS for 7 days, then 200 mg/kg ip single dose cyclophosphamide on the 8th day (6) and finally 0.2 mL PS ip for 7 days again to complete 15 days. The treatment groups had the same protocol administered with NaHS of 25, 50, and 100 µmol/kg doses [17].

Animals were weighed 24 h after treatment and anesthesia was induced with ketamine (70 mg/kg ip, Ketalar, Pfizer) and xylazine (10 mg/kg ip, Alfazyne). Intracardiac blood was taken for euthanasia of animals. Blood samples were centrifuged at 1000 g for 20 min and serum was stored at 20 °C. The bladder and both testes of animals were obtained. One testis was weighed and stored at –20 °C for dry weight measurement. The other testis was divided into 2 pieces and stored for histopathologic examination and to create biochemical homogenates. The bladders of the animals were divided into 3 pieces. The 1st piece was used for histopathologic analysis, the 2nd piece was used to prepare homogenate for biochemical testing purposes, and the 3rd piece was weighed and stored at –20 °C and used to measure dry weight later.

2.2. Body and organ weights

Animals were weighed before and after the experiment. Weight results were recorded. Changes in body weight were calculated as percentages (BW% = (BW2–BW1)/100). Frozen testis and bladder samples were dried in an oven at 60 °C for 12 h. Dry weights were recorded and dry/wet weight ratios were calculated.

2.3. Histopathologic investigations

The bladder and testis were stored in 10% neutral formalin solution. Tissues were later submerged in paraffin blocks, sections were taken and stained with hematoxylin and eosin. With the aim of showing the presence of apoptotic cells, APAF-1 and caspase 3 stains were used. Additionally,

the presence of acrolein in the bladder walls was assessed. For this purpose, acrolein staining was used. The Gray criteria were used for histopathologic bladder scoring. Gray scoring is grade 0: normal epithelium, grade 1: moderate degree of submucosal edema, moderate degree hemorrhage and low amounts of ulceration, and grade 2: cell infiltration, fibrin deposition, severe hemorrhage, and countless ulceration [18].

2.4. Investigation of testis and bladder homogenates

2.4.1. Preparation of testis and homogenates

Tissues taken from the bladder and testis were homogenized in 5% Triton X-100 and phosphate with 1:1 ratio buffered 1 mL mixture. The homogenized tissue was later centrifuged at 1000 g for 10 min and the supernatant was used for biochemical analyses.

2.4.2. Measurement of H₂S, NO (nitric oxide), cGMP, IL 6 (interleukin 6), IL 10 (interleukin 10), FSH (follicle stimulating hormone), LH (luteinizing hormone), and testosterone

H₂S, NO, cGMP, IL 6, IL 10, LH, FSH, and testosterone levels were measured with the aid of commercial kits. The procedures were completed in line with the guidelines in the commercial kits.

2.4.3. Protein amounts in homogenates

This was measured with a maestrogen-maestronano spectrophotometer.

2.5. Statistical analysis

Results are given as mean \pm SD and median (%25)–(%75). Data were analyzed in the SPSS program v: 21.0 (IBM Corp., Armonk, NY) using one-way analysis of variance test (ANOVA) (posthoc Dunnett test). Comparison of histopathologic data used the Kruskal–Wallis (posthoc Dunn method) test. Significance was accepted as $p < 0.05$.

3. Results

3.1. Body weight values

Body weight values is shown in Table 1. When body weight (BW) ratios are investigated, the cyclophosphamide (CP) group had severe body weight loss compared to the control group ($p < 0.001$). The higher body weight loss in the NaHS50 group is noteworthy. There was significant body weight loss, though at lower rates, in the NaHS100 group.

Relative bladder weight was calculated by dividing the wet bladder weight by the final BW. Significant variation was not identified between the groups in terms of relative bladder weight. However, relative testis weight was significantly increased in CP, NaHS25, and NaHS50 groups compared to controls ($p < 0.01$).

Wet/dry bladder weights were observed to be significantly increased in the groups administered 50 and 100 $\mu\text{mol/kg}$ NaHS compared to controls ($p < 0.001$). There was no significant variation in wet/dry testis weights.

3.2. Biochemical analysis

3.2.1. Interleukin values (IL)

Interleukin values is shown in Figure 1. When IL 10 and IL 6 values are examined, the IL 10 values increased in testis tissue in the CP group. However, the same value was lower in the groups administered 25, 50, and 100 $\mu\text{mol/kg}$ NaHS compared to the CP group ($p < 0.01$) (Figure 1A). The greatest reduction was noted in the 50 $\mu\text{mol/kg}$ NaHS group. There were no significant changes in the IL 10 values in the bladder. However, it is notable that the mean values in the 25 and 50 $\mu\text{mol/kg}$ NaHS groups were closest to the control group (Figure 1B).

When examined for IL 6 values, we can see IL 6 was elevated in the CP group ($p < 0.01$). There was a pronounced fall in this value in the groups administered 25, 50, and 100 $\mu\text{mol/kg}$ NaHS compared to the CP group. Again, when assessed in terms of mean values, the greatest reduction was observed in the 50 $\mu\text{mol/kg}$ NaHS group (Figure 1C). Though there was no statistically significant variation of IL6 in bladder tissue, in terms of mean values the greatest reduction was observed in the 50 $\mu\text{mol/kg}$ NaHS group (Figure 1D).

3.2.2. Cyclic guanosine monophosphate (cGMP) values

cGMP values is shown in Table 2. When cGMP values are investigated, values for the bladder were identified to have significant falls in the CP, NaHS25 and NaHS50 groups compared to the control group ($p < 0.01$). When the NaHS100 group is compared with other treatment groups, a significant elevation is present ($p < 0.01$). In testis tissue, the cGMP values in the CP group were observed to be significantly low. However, this value significantly increased, especially in the group administered 50 $\mu\text{mol/kg}$ NaHS. The same increase was observed in the other treatment groups, with the highest increase in mean values observed in the 50 $\mu\text{mol/kg}$ NaHS group.

3.2.3. Nitric oxide (NO)-hydrogen sulfide (H₂S) values

Nitric oxide (NO)-hydrogen sulfide (H₂S) values is shown in Table 2. When NO and H₂S values are investigated, the NO values in testis tissue appeared to be significantly elevated in the NaHS50 group compared to both the control group and the CP group ($p < 0.01$). The NaHS100 group had a significant fall compared to values in the NaHS50 group ($p < 0.01$). Similarly, in bladder tissue there was a significant elevation in the NaHS50 group ($p < 0.05$).

The H₂S values in testis tissue were significantly elevated in all three treatment groups compared to the control and CP groups ($p < 0.001$). The greatest increase in mean value was observed in the NaHS100 group. When bladder tissue is examined, there were significant increases in the 50 and 100 $\mu\text{mol/kg}$ NaHS groups compared to the control and CP groups ($p < 0.01$).

Table 1. Body and organ weights in rats.

	Group	Mean ± SD	Median (%25)–(%75)	p
BW%	C	0.54±0.25	0.56 (0.27)–(0.78)	<0.001
	CP	-0.30 ± 0.29	-0.39 (-0.43)–(-0.03)***	
	NaHS25	-0.11±0.22	-0.03 (-0.35)–(0.10)	
	NaHS50	-0.45±0.22	-0.38 (-0.62)–(-0.30)***	
	NaHS100	-0.21±0.16	-0.30 (-0.32)–(-0.04)***	
Relative bladder weight (mg/g)	C	0.16±0.04	0.15 (0.12)–(0.19)	0.022
	CP	0.43±0.28	0.39 (0.23)–(0.71)	
	NaHS25	0.46±0.44	0.31 (0.23)–(0.46)	
	NaHS50	0.27±0.26	0.16 (0.08)–(0.44)	
	NaHS100	0,16±0.08	0.16 (0.08)–(0.22)	
Dry/wet bladder weight (mg/g)	C	0.14±0.02	0.14 (0.13)–(0.16)	0.001
	CP	0.17±0.06	0.15 (0.11)–(0.23)	
	NaHS25	0.18±0.14	0.14 (0.13)–(0.20)	
	NaHS50	0.34±0.14	0.38 (0.18)–(0.47)***	
	NaHS100	0.29±0.12	0.25 (0.20)–(0.33)***	
Relative testis weight (mg/g)	C	4.26±0.61	4.30 (4.15)–(4.75)	0.002
	CP	6.53±0.56	6.52 (6.01)–(7.08)**	
	NaHS25	5.52±0.46	5.48 (5.11)–(6.00)**	
	NaHS50	5.04±1.67	5.87 (3.30)–(6.08)**	
	NaHS100	4.89±1.46	5.15 (3.42)–(6.25)	
Dry/wet testis weight (mg/g)	C	0.13±0.01	0.13 (0.13)–(0.14)	0.007
	CP	0.19±0.07	0.17 (0.15)–(0.24)	
	NaHS25	0.36±0.58	0.16 (0.15)–(0.17)	
	NaHS50	0.16±0.01	0.16 (0.15)–(0.18)	
	NaHS100	0.16±0.02	0.16 (0.14)–(0.17)	

Values are given as mean ± SD and median (%25)–(%75). Differences are given compared to the C group (*). ** p < 0.01; *** p < 0.001.

C: control; CP: cyclophosphamide; NaHS: sodium hydrosulfide.

3.2.4. Follicle stimulating hormone (FSH), luteinizing hormone (LH), and testosterone (T) values

Follicle stimulating hormone (FSH), luteinizing hormone (LH), and testosterone (T) values are shown in Figure 2. The FSH values had no differences observed between the groups. However, when the LH values are examined, there was a significant increase identified in the CP group compared to the control group (p < 0.001). There were significant falls identified in the other treatment groups compared to both control and CP groups (p < 0.001). When testosterone levels are investigated, there was a significant reduction observed in the CP group (p < 0.001). When the values in the 25 and 50 µmol/kg NaHS groups are investigated, there was an increase in testosterone values compared to the CP group (p < 0.001). The value in the

100 µmol/kg NaHS group was significantly low compared to the NaHS50 group (p < 0.001). However, testosterone levels were only identified to reach control levels in the NaHS50 group. This group was not identified to have any significance compared to control.

3.2.5. Histopathologic values

3.2.5.1. Bladder hematoxylin & eosin (H&E) staining

Bladder hematoxylin & eosin (H&E) staining is shown in Figure 3. Bladder preperates stained with H & E had normal bladder epithelium appearance in the control group. In the CP group, bladder mucosa epithelium had mild degree of desquamation, severe hemorrhage in lamina propria and submucosa, and mild levels of inflammatory cell inflammation observed (grade 2). In the NaHS25 group, the bladder epithelium had partially

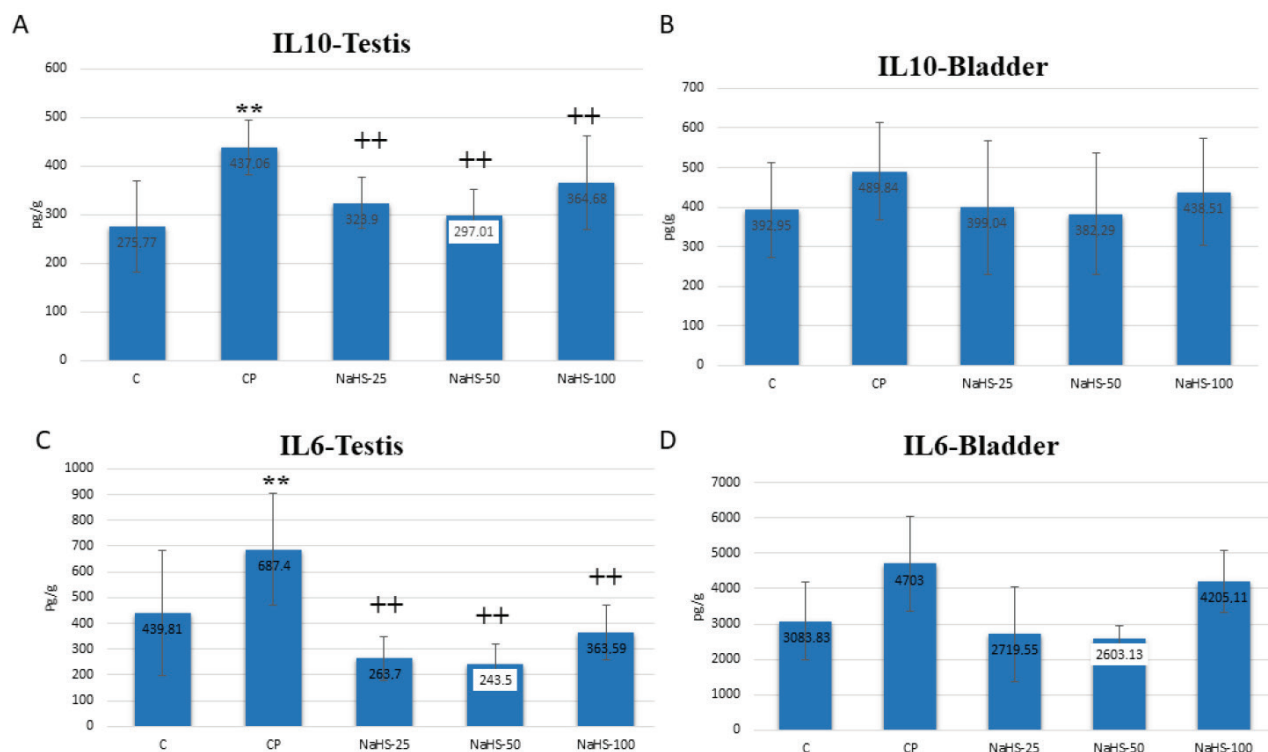


Figure 1. Effects of NaHS treatment on biochemical parameters in rats with cyclophosphamide toxicity. A: IL10 testis; B: IL10 bladder; C: IL 6 testis; D: IL 6 bladder. Data are given as mean \pm SD. (*): Different from control; ** $p < 0.01$; (+); Different from CP; ++ $p < 0.01$ ANOVA (n: 8). C: control; CP: cyclophosphamide; NaHS: sodium hydrosulfide; IL: interleukin.

normal appearance with severe hemorrhage in the lamina propria and submucosa and mild levels of inflammatory cell infiltration similar to the CP group. The NaHS50 group had bladder epithelium with appearance close to the control group for lamina propria and submucosa (grade 0). The NaHS100 group had less desquamation of bladder epithelium compared to the CP group, and milder hemorrhage in lamina propria and submucosa and inflammatory cell infiltration compared to the NaHS25 group (grade 1).

3.2.5.2. Bladder immunohistochemical staining

Bladder immunohistochemical staining is shown in Figure 4, Figure 5, Figure 6, and Figure 7. Apoptotic cell counts with immunohistochemical staining observed an increase in apoptotic cell numbers especially in the CP group (Figure 4, Figure 5, and Figure 6). Additionally, a notable finding is that the NaHS50 group had a significant reduction in apoptotic cell counts compared to the CP group (Figure 4, Figure 5, and Figure 6).

Acrolein staining did not observe any areas stained for acrolein in the control group bladder (Figure 7). However, very darkly stained areas were present in the CP group (Figure 7). In the treatment groups, the group with least acrolein staining was observed to be the NaHS50 group (Figure 7).

3.2.5.3. Testis H&E staining

Testis H&E staining is shown in Figure 8, Figure 9. Histological investigation of testis tissue found testis sections from the control group contained seminiferous tubules, cells belonging to spermatogenic series and Leydig cells in interstitial tissue had normal structure and no pathologic findings were encountered (Figure 8). Testis sections from the CP group observed intense hemorrhage and edema in the interstitial area, increased seminiferous tubule numbers with germinal cells falling into the lumen, occasional vacuolization in germinal epithelium, and reduced thickness of germinal epithelium (Figure 8). Testis sections from the NaHS25 group observed an improvement in hemorrhage and edema in the interstitial area seen in the CP group, with similar increases in seminiferous tubules falling from germinal cells into the lumen and reductions in germinal epithelium thickness (Figure 8). Sections from the NaHS50 group had occasional hemorrhage and edema in the interstitial area, with germ cell counts falling into the lumen in seminiferous tubules and germinal epithelium thickness similar to the control group (Figure 8). The NaHS100 group had hemorrhage and edema in the interstitial area rarely but occasionally, and vacuolization in germinal epithelium, with germ cell numbers falling into the lumen in seminiferous tubules

Table 2. cGMP, NO, H₂S bladder and testis values.

		Group	Mean ± SD	Median (%25)–(%75)	p
cGMP	Bladder	C	315.09±79.56	304.30 (243.33)–(378.13)	0.009
		CP	195.70±19.71	196.44 (178.21)–(212.35)**	
		NaHS25	221.97±30.31	218.92 (201.67)–(246.83)**	
		NaHS50	224.78±37.6	239.34 (190.00)–(255.00)**	
		NaHS100	287.62±66.38	295.45 (215.72)–(338.75)**	
	Testis	C	23.28±16.22	15.62 (10.62)–(42.14)	0.002
		CP	5.72±2.51	5.35 (4.32)–(7.27)	
		NaHS25	18.90±10.59	15.81 (10.82)–(29.23)**	
		NaHS50	37.68±15.86	38.30 (22.51)–(52.15)**	
		NaHS100	32.83±23.56	26.53 (11.13)–(61.10)**	
NO	Bladder	C	24.73±9.48	21.88 (17.54)–(36.09)	0.05
		CP	18.70±3.89	19.09 (14.38)–(22.38)	
		NaHS25	25.85±7.16	25.23 (20.50) –(31.67)	
		NaHS50	32.15±6.24	31.59 (26.56)–(38.85)**	
		NaHS100	26.21±9.06	25.86 (17.38)–(36.17)**^	
	Testis	C	0.71±0.52	0.71 (0.17)–(1.13)	0.006
		CP	0.46±0.28	0.36 (0.25)–(0.68)	
		NaHS25	1.04±0.43	1.04 (0.80)–(1.44)	
		NaHS50	1.74±0.48	2.03 (1.13)–(2.07)***	
		NaHS100	0.91±0.45	0.97 (0.42)–(1.30)**^	
H ₂ S	Bladder	C	79.04±18.24	76.34 (61.36)–(96.81)	0.019
		CP	60.81±26.03	65.00 (42.05)–(76.67)	
		NaHS25	78.93±22.47	79.67 (58.65)–(100.68)	
		NaHS50	108.14±37.98	117.69 (77.11)–(134.13)***	
		NaHS100	116.37±20.73	116.59 (95.15)–(138.64)***	
	Testis	C	0.94±0.56	0.92 (0.39)–(1.44)	0.001
		CP	0.64±0.40	0.54 (0.30)–(1.03)	
		NaHS25	1.29±0.27	1.18 (1.12)–(1.48)*****	
		NaHS50	1.99±0.35	2.12 (1.64)–(2.29)*****	
		NaHS100	2.43±0.77	2.61 (1.87)–(3.05)*****	

Values are given as mean ± SD and median (%25)–(%75). Differences are given compared to the C group (*), CP group (+), NaHS50 (^). * p < 0.05; ** p < 0.01; *** p < 0.001, + p < 0.05; ** p < 0.01; *** p < 0.001, ^ p < 0.05; ^^ p < 0.01. C: control; CP: cyclophosphamide; NaHS: sodium hydrosulfide.

and germinal epithelium thickness similar to the control group (Figure 8).

Tubuloseminiferous epitelyal height was reduced in the CP group compared to the control group (p < 0.001). In the NaHS50 group, there was a significant increase observed compared to the CP group (p < 0.001) (Figure 9).

3.2.5.4. Testis immunohistochemical staining

Testis immunohistochemical staining is shown in Figure

10. Immunohistochemical staining observed increased apoptotic cell counts especially in the CP group. The NaHS50 group was observed to have a significant reduction in apoptotic cell counts compared to the CP group.

4. Discussion

In this study we aimed to investigate the therapeutic and protective effects of H₂S against hemorrhagic cystitis

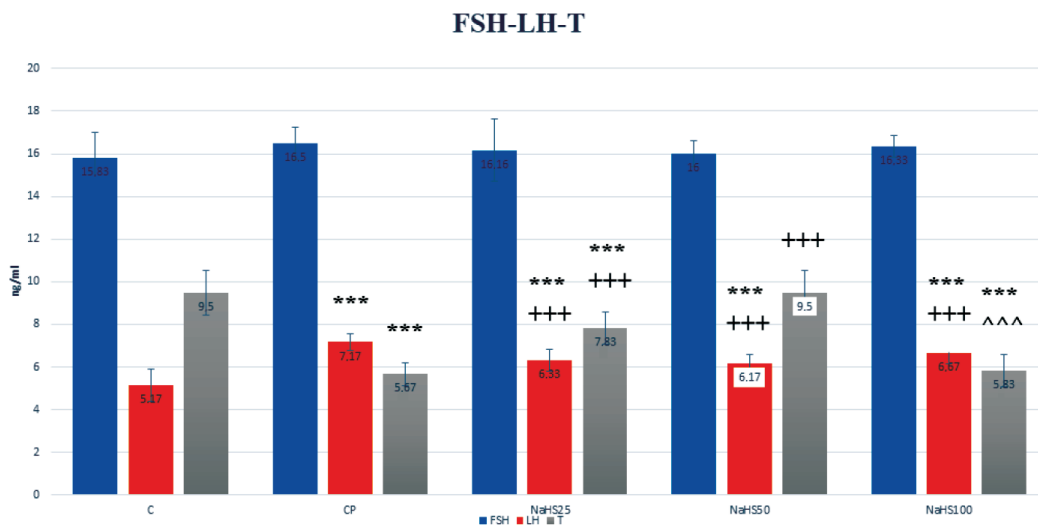


Figure 2. Effects of NaHS treatment on hormonal parameters in rats with cyclophosphamide toxicity. Data are given as mean \pm SD. (*): different from control; (***) $p < 0.001$; (+): different from CP; (+++) $p < 0.001$; (^): different from NaHS50; (^^) $p < 0.001$ ANOVA (n: 8). C: control; CP: cyclophosphamide; NaHS: sodium hydrosulfide; FSH: follicle stimulating hormone; LH: luteinizing hormone; T: testosterone.

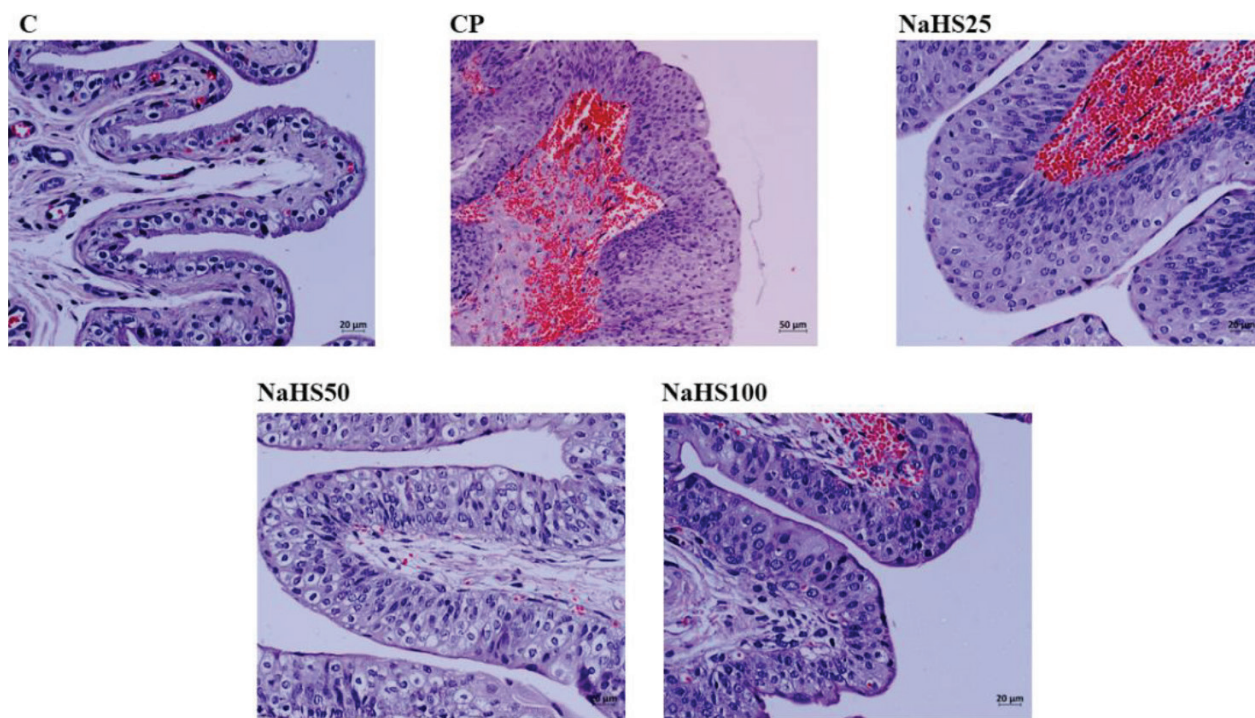


Figure 3. Representative images of H&E staining in the bladder. C: control; CP: cyclophosphamide; NaHS: sodium hydrosulfide.

and testicular injury, serious side effects of the anticancer cyclophosphamide, in male rats. So, we investigated IL 6, IL 10, cGMP, NO, H₂S, FSH, LH, and testosterone values.

We identified a significant fall in IL 6 and IL 10 values, especially in the testes of treatment groups administered 25 and 50 $\mu\text{mol/kg}$ NaHS. However, a significant increase was present in the group administered CP. Stimulation

of the bladder with CP causes excessive inflammation. As a result, the increase in IL 6 levels in the CP group is accepted as normal. In fact, a study identified that CP increased IL 6 levels [19]. IL 6 expression is linked to protein kinase signaling activated by p38-mitogen and c-jun pathway activated by NF κ B. H₂S is known to have a regulatory role in inflammation. A study of cattle

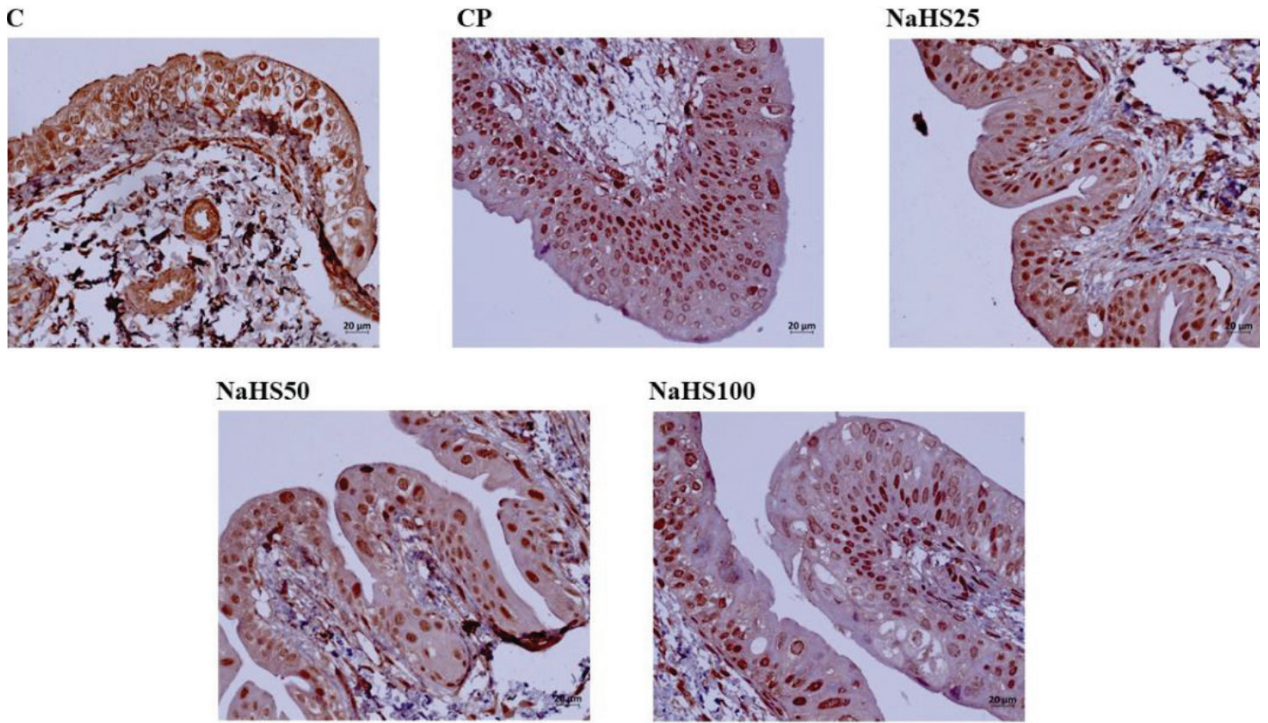


Figure 4. Representative images of APAF-1 staining in the bladder. C: control; CP: cyclophosphamide; NaHS: sodium hydrosulfide.

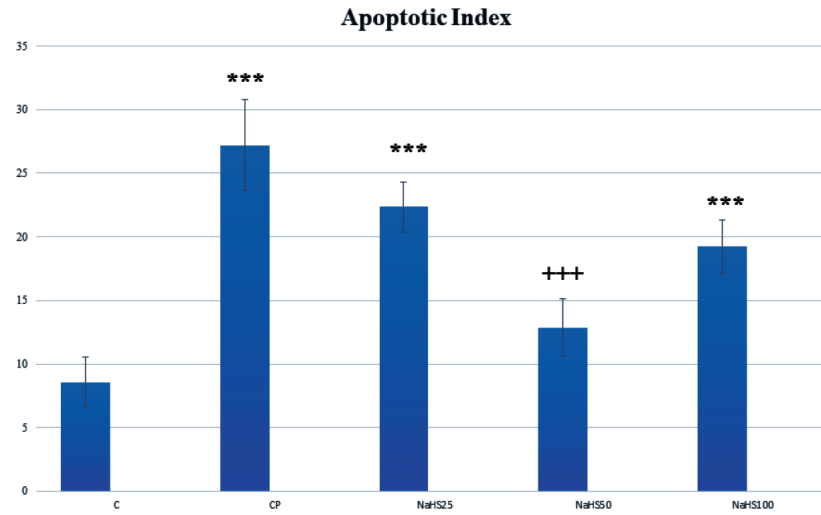


Figure 5. Effects of NaHS treatment on immunohistochemical parameters in rats with cyclophosphamide toxicity. Data are given as mean ± SD. (*): Different from control ; *** p < 0.001; (+); Different from CP; +++ p < 0.001 ANOVA (n: 8). C: control; CP: cyclophosphamide; NaHS: sodium hydrosulfide.

mammary infections identified exogenously-administered H₂S lowered IL 6 levels [20]. Similar results were obtained in our study. In the testes, pronounced falls in IL 10 and IL 6 levels were observed, especially with 50 µmol/kg NaHS dose. Interestingly, these levels were lower than the levels with dose of 100 µmol/kg NaHS. The IL 6 and IL 10 levels increased with administration of 100 µmol/kg NaHS

dose. We observed the same effects in our study as in our previous study where we researched the effective dose of exogenous H₂S [21].

Used as a secondary messenger in signal transduction pathways, cGMP regulates a variety of physiologic functions. Smooth muscle contractility, neurotransmission and cell growth and proliferation may be listed among

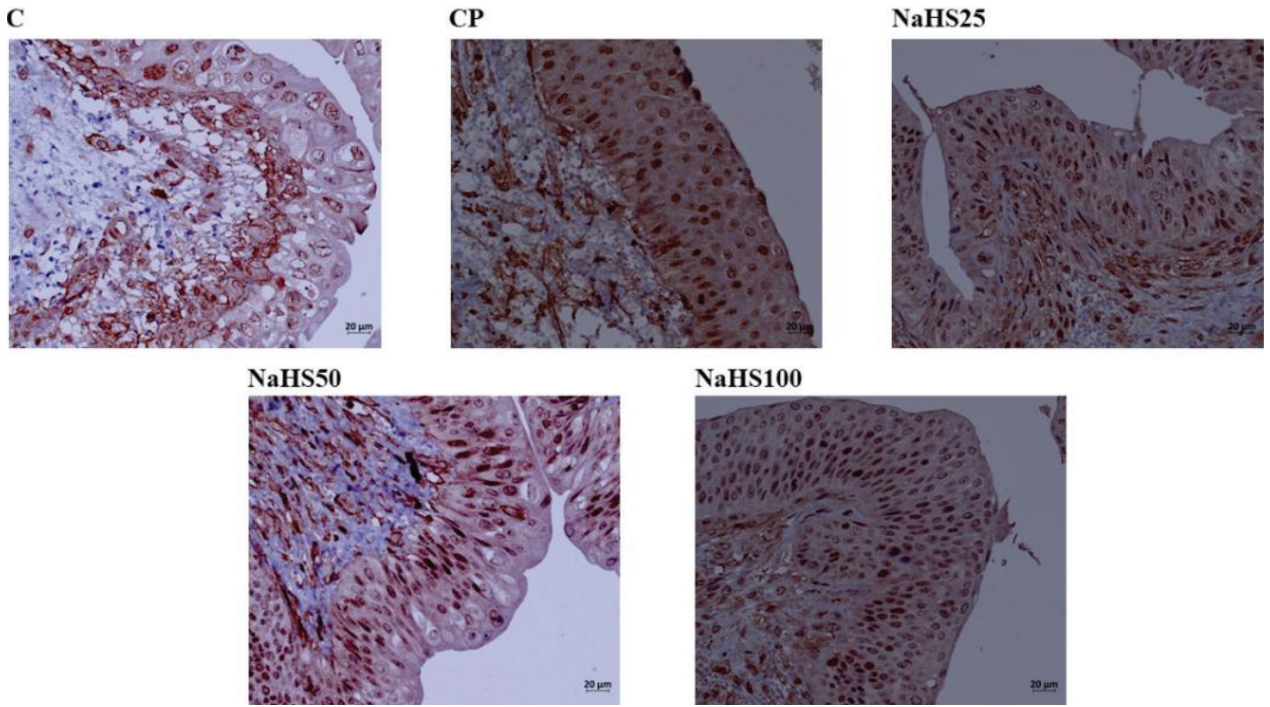


Figure 6. Representative images of Caspase-3 staining in the bladder. C: control; CP: cyclophosphamide; NaHS: sodium hydrosulfide.

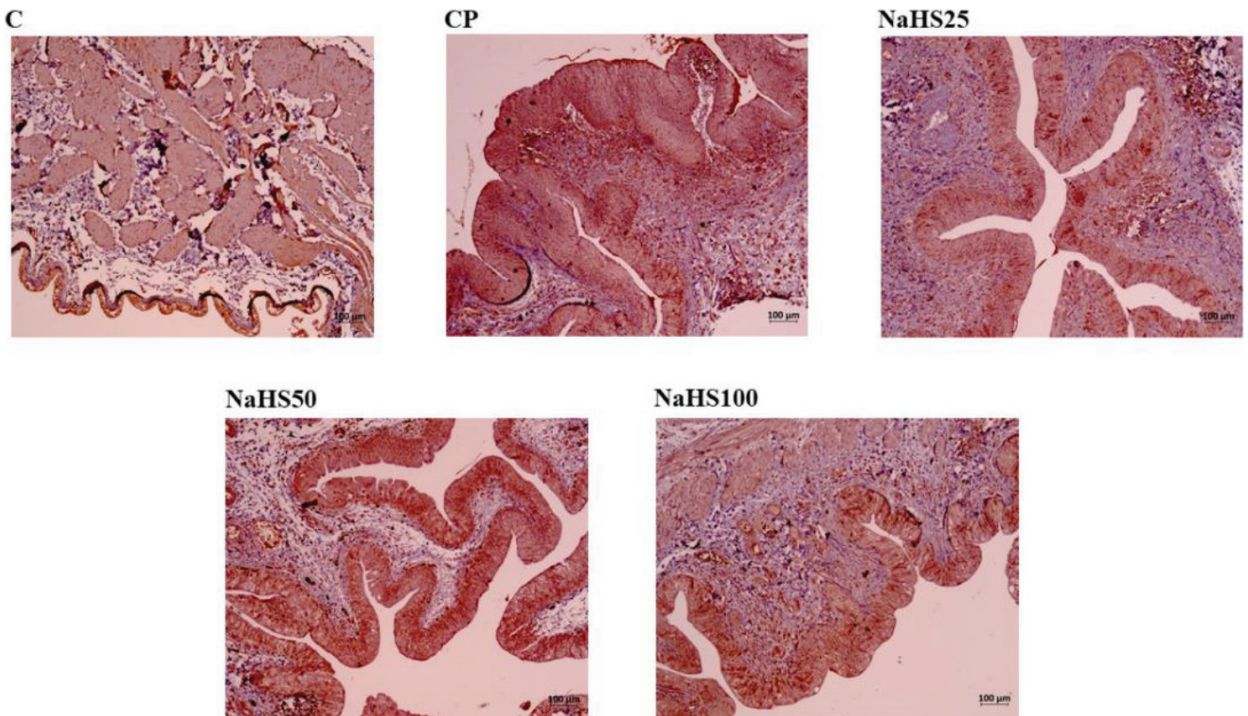


Figure 7. Representative images of Acrolein staining in the bladder. C: control; CP: cyclophosphamide; NaHS: sodium hydrosulfide.

these functions. In our study, we observed cGMP levels fell in both bladder and testis tissue with administration of CP. In fact, we observed similar results in our previous study.

A study by De Oliveira et al. [22] induced cystitis in mice with CP and investigated the effects of an agent named BAY 58-2668 on cystitis. The researchers observed that

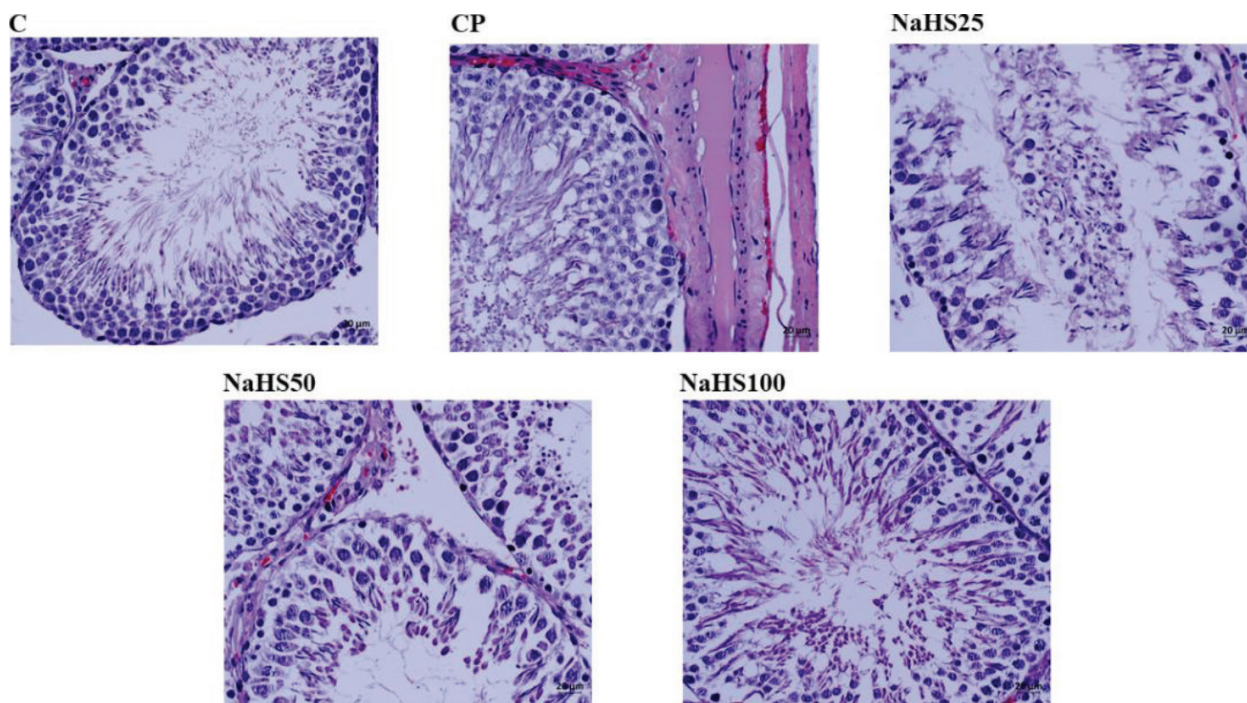


Figure 8. Representative images of H&E staining in the testis. C: control; CP: cyclophosphamide; NaHS: sodium hydrosulfide.

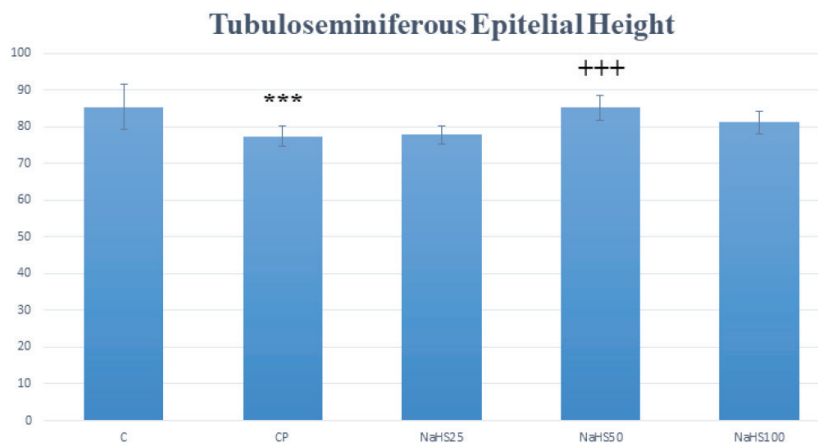


Figure 9. Effects of NaHS treatment on histological parameters in rats with cyclophosphamide toxicity. Data are given as mean \pm SD. (*): Different from control ; *** $p < 0.001$; (+); Different from CP; +++ $p < 0.001$ ANOVA (n: 8). C: control; CP: cyclophosphamide; NaHS: sodium hydrosulfide.

CP caused a fall in cGMP levels. However, the agent called BAY 58-2667 did not ameliorate this effect and as a result did not improve bladder functions. This study was similar to our study. There was no study encountered investigating the effects of H_2S . We observed that cGMP levels fell in the group administered CP and that the cGMP levels increased in the groups administered NaHS. In testis tissue the 50 $\mu\text{mol/kg}$ NaHS dose was effective especially, while in bladder tissue all three doses were effective; however, we observed the most effective dose was 100 $\mu\text{mol/kg}$ NaHS.

When we examined NO and H_2S values, we observed NO values were increased in both bladder and testis of the group administered 50 $\mu\text{mol/kg}$ NaHS. The formation of the guanyl cyclase enzyme, which converts GTP to c-GMP, is accelerated by NO, carbon monoxide (CO) and natriuretic peptide (NUP). A small molecule, NO is formed with the help of nitric oxide synthase (NOS) enzyme in the presence of L-arginine and oxygen [23]. NO released from urothelium or nerve fibers affects efferent and afferent neurotransmission. This causes inhibitory

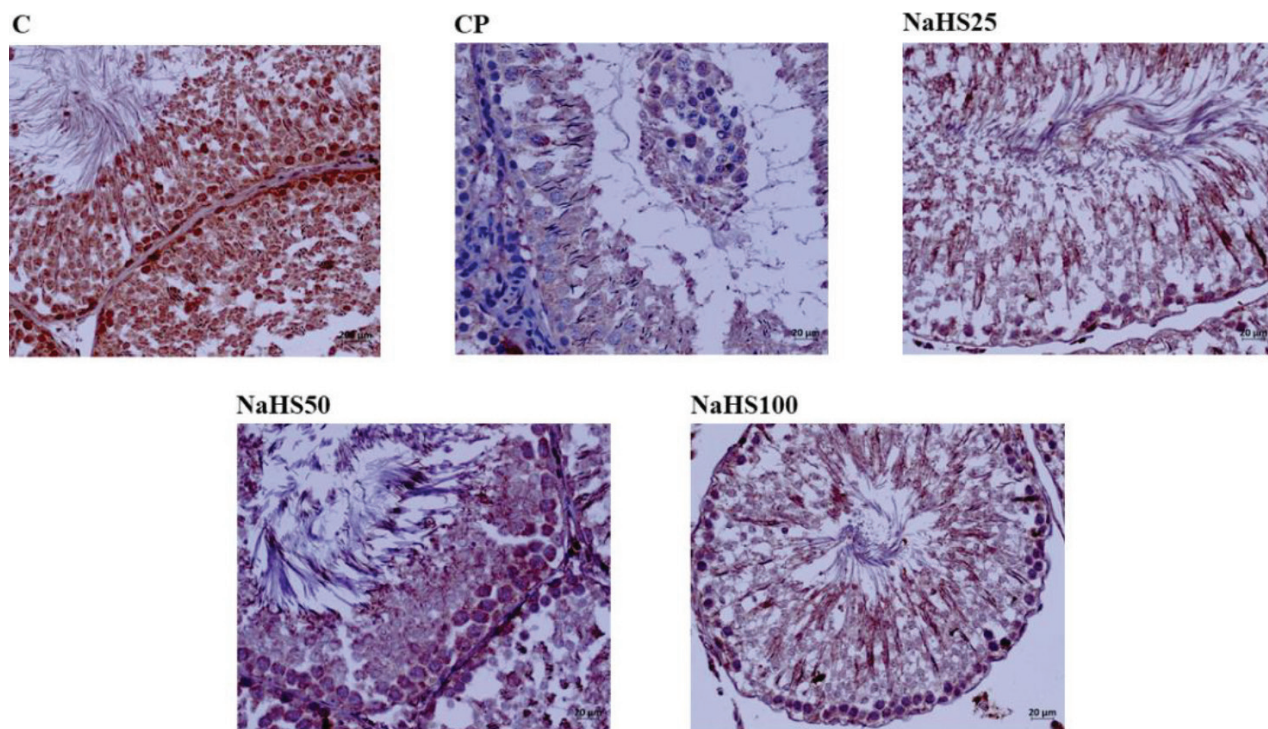


Figure 10. Representative images of Acrolein staining in the testis. C: control; CP: cyclophosphamide; NaHS: sodium hydrosulfide.

effects in bladder smooth muscle. NO nucleoside has the effect of increasing catalytic activity of enzyme-soluble guanyl cyclase (sGC), a cytosolic, heterodimeric protein comprising α - and β -subunits and a protetic heme group including a β -subunit transforming GTP to cGMP [22]. Once formed, NO enters the smooth muscle cell, it increases the level of cGMP over the soluble guanyl cyclase enzyme, the second increased messenger molecule (cAMP and cGMP) within the cytoplasm stimulates the protein kinase enzyme in the cell and finally, Ca level decreases in cytoplasm and smooth muscle relaxation is provided [23]. In other words, cGMP and NO are linked to each other. Studies have shown a common signal path mediating the effects of NO and H₂S on vascular functions like vasodilatation, vascular remodeling (migration and proliferation), and angiogenesis. Recent studies have shown H₂S-mediated NO regulation has a role in regulating angiogenesis and reducing ischemia-reperfusion injury. Kolluru et al. [24] explained the protective effects of H₂S and donors against proangiogenic and ischemia/reperfusion injury may occur via induction of effectors in the VEGF/VEGFR2 signals and vascular endothelial cells PI3K/Akt/eNOS. Additionally, H₂S prevents degradation of eNOS and later is reported to induce NO production by eNOS phosphorylation via PI3K/Akt activity and p38 MAPK pathway mediation. The pharmacologic donors of NO upregulate substrate bioavailability and expression for the H₂S synthesis enzyme CSE and may result in H₂S

production occurring with vasodilator effects [24]. This information complies with the results of our study.

We observed H₂S increased in a dose-dependent manner in testis tissue. However, when we examined bladder tissue, the highest level of H₂S was observed in the group administered 50 μ mol/kg NaHS. This result seems that this dose was effective for hemorrhagic cystitis. H₂S is an effective gasotransmitter in both bladder and testis. Both CBS and CSE are expressed in the human corpus cavernosum. Exogenously-administered H₂S was observed to relax isolated corpus cavernosum endothelium independently. The testis is a structure sensitive to oxidative stress. A study by Wang et al. [25] identified a reduction in H₂S concentrations in seminal plasma of infertile patients. Administration of H₂S externally was identified to resolve this problem. Finally, they concluded that exogenous H₂S protected testicular function and was effective in terms of fertility.

H₂S is predicted to be effective in the bladder. Cystathionine synthase is expressed in the human bladder and produces H₂S at identifiable rates in vitro. Additionally, H₂S is a mediator of the smooth muscle relaxant effect of phosphodiesterase 5 (PDE-5) [26]. At the same time, H₂S may be produced endogenously in rat and mouse bladders. Animal studies have shown that H₂S is effective on bladder smooth muscle relaxation. This effect of H₂S occurs by activation of the potassium-ATP dependent channel in the human bladder. Both CSE and CBS enzyme are expressed

in human urothelium and detrusor muscle and produce H₂S. CBS regulates phosphorylation activity within urothelium. This enzyme makes phosphorylation more active dependent on cyclic guanosine monophosphate/protein kinase (cGMP/PKG) especially in Ser 227. Stated differently, when there is an increase in cGMP, there is also an increase for H₂S and this relaxes the bladder [27]. These results comply with the results of our study. In our study we observed a significant increase in H₂S levels in the bladder, especially in the group administered 50 µmol/kg NaHS. Additionally, when compared with the CP groups, we observed significant increases in cGMP levels. According to these results, the administered NaHS as H₂S donor can be said to have protective and therapeutic effect on toxicity induced by CP in the bladder and testis.

Additionally, we investigated FSH, LH and testosterone levels to assess testis functions. LH values were higher in the group administered CP; however, testosterone levels were low. This result complies with the results of previous studies. In fact, a study which induced dyszoospermia with CP obtained the same results [28]. When we look at the treatment groups, the decrease in testosterone values in CP group were found to increase. We determined that the closest rise to the control values was in the group in which we administered 50 µmol/kg NaHS. In the group administered 100 µmol/kg NaHS, we observed LH levels began to rise and testosterone levels began to fall again. According to these results, we can say H₂S has a positive effect on testis dysfunction. LH is a hormone produced by the pituitary gland in the brain. In males, LH causes production of testosterone by stimulating Leydig cells in the testes. After testis dysfunction induced by CP, it is natural that testosterone production will stop or reduce. On the contrary, the pituitary gland begins to produce more LH. Considering the increase in testosterone levels with of, exogenous H₂S may be concluded to be effective on cases with drug-

related infertility. In fact, histologic and histopathologic results comply with these findings.

In our study, we performed histologic staining with H&E. The findings here support our biochemical results. Very intense hemorrhagic foci were observed in the CP group, while appearances close to the control group were observed in the NaHS50 group especially [29]. We used APAF-1, caspase-3, and acrolein staining for immunohistochemical studies. APAF-1 and caspase 3 staining provided results compatible with H&E staining. Here, the apoptotic cell counts were increased in the CP group; however, we identified these numbers were much reduced especially in the NaHS50 group. These results were the same for both bladder and testis.

When all these findings are evaluated, H₂S has protective and therapeutic effects on hemorrhagic cystitis and testis dysfunction developing linked to the cancer drug CP. Medications developed with this gasotransmitter will protect cancer patients from the side effects of drugs and/or treat the side effects caused by drugs with the effective dose of 50 µmol/kg. H₂S is a promising molecule for the development of new medications.

Acknowledgments

We would like to thank Ahmet Musmul from Eskişehir Osmangazi University for his support in the evaluation of statistical data.

Funding

This study was supported by Dumlupınar University, Scientific Research Project Coordinator (DPUBAP-2018-12).

Compliance with ethical standards

The approval of this study was obtained from the Animal Experiments Local Ethics Committee of Dumlupınar University (2017.12.03).

References

1. Bennett AH. Cyclophosphamide and hemorrhagic cystitis. *The Journal of Urology* 1974; 111: 603-606. doi: 10.1016/s0022-5347(17)60025-9
2. Gray KJ, Engelmann UH, Johnson EH, Fishman IJ. Evaluation of misoprostol cytoprotection of the bladder with cyclophosphamide (cytoxan) therapy. *Journal of Urology* 1986; 136 (2): 497-500. doi: 10.1016/s0022-5347(17)44929-9
3. Brock N, Pohl J, Stekar J. Studies on the urotoxicity of oxazaphosphorine cytostatics and its prevention - I: experimental studies on the urotoxicity of alkylating compounds. *European Journal of Cancer* 1981; 17 (6): 595-607. doi: 10.1016/0014-2964(81)90261-9
4. Koss LG. A light and electron microscopic study of the effects of a single dose of cyclophosphamide on various organs in the rat. I. The urinary bladder. *Laboratory Investigation* 1967; 16: 44-65. PMID: 4164460
5. Bischel MD. Cyclophosphamide -- hemorrhagic cystitis following prolonged low-dose therapy. *The Journal of the American Medical Association (JAMA)* 1979; 242: 238-239. doi: 10.1001/jama.1979.03300030014007
6. Yigitaslan S, Ozatik O, Ozatik Y, Erol K, Baseskioglu B. The effects of tadalafil on hemorrhagic cystitis and testicular dysfunction induced by cyclophosphamide in rats. *Urologia Internationalis* 2014; 93 (1): 55-62. doi: 10.1159/000352095

7. Türk G, Ceribaşı AO, Sakin F, Sönmez M, Ateşşahin A. Antiperoxidative and antiapoptotic effects of lycopene and ellagic acid on cyclophosphamide-induced testicular lipid peroxidation and apoptosis. *Reproduction Fertility and Development* 2010; 22: 587-596. doi: 10.1071/RD09078
8. Drumond AL, Weng CC, Wang G, Chiarini-Garcia H, Eras-Garcia L et al. Effects of multiple doses of cyclophosphamide on mouse testes: accessing the germ cells lost, and the functional damage of stem cells. *Reproductive Toxicology* 2011; 32: 395-406. doi: 10.1016/j.reprotox.2011.09.010
9. Sen U, Pushpakumar SB, Amin MA, Tyagi SC. Homocysteine in renovascular complications: hydrogen sulfide is a modulator and plausible anaerobic ATP generator. *Nitric Oxide* 2014; 15: 41: 27-37. doi: 10.1016/j.niox.2014.06.006
10. Ahmad FU, Sattar MA, Rathore HA, Abdullah MH, Tan S et al. Exogenous hydrogen sulfide (H₂S) reduces blood pressure and prevents the progression of diabetic nephropathy in spontaneously hypertensive rats. Exogenous hydrogen sulfide (H₂S) reduces blood pressure and prevents the progression of diabetic nephropathy in spontaneously hypertensive rats. *Renal Failure* 2012; 34: 203-210. doi: 10.3109/0886022X.2011.643365
11. Matsunami M, Miki T, Nishiura K, Hayashi Y, Okawa Y et al. Involvement of the endogenous hydrogen sulfide/Ca(v) 3.2 T-type Ca²⁺ channel pathway in cystitis-related bladder pain in mice. *British Journal of Pharmacology* 2012; 167 (4): 917-928. doi: 10.1111/j.1476-5381.2012.02060.x
12. Distrutti E. Hydrogen sulphide and pain. *Inflammation & Allergy Drug Targets* 2011; 10 (2): 123-322. doi: 10.2174/187152811794776240
13. Srilatha B, Adaikan PG, Moore PK. Possible role for the novel gasotransmitter hydrogen sulphide in erectile dysfunction--a pilot study. *European Journal of Pharmacology* 2006; 535 (1-3): 280-282. doi: 10.1016/j.ejphar.2006.02.001
14. Srilatha B, Adaikan PG, Li L, Moore PK. Hydrogen sulphide: a novel endogenous gasotransmitter facilitates erectile function. *Journal of Sexual Medicine* 2007; 4 (5): 1304-1311. doi: 10.1111/j.1743-6109.2007.00561.x
15. Di Villa Bianca RE, Sorrentino R, Maffia P, Mirone V, Imbimbo C et al. Hydrogen sulfide as a mediator of human corpus cavernosum smooth-muscle relaxation. *Proceedings of the National Academy of Sciences of the United States of America*. USA 2009; 106 (11): 4513-4518. doi: 10.1073/pnas.0807974105
16. La Fuente JM, Fernández A, Pepe-Cardoso AJ, Martínez-Salamanca JI, Louro N et al. L-cysteine/hydrogen sulfide pathway induces cGMP-dependent relaxation of corpus cavernosum and penile arteries from patients with erectile dysfunction and improves arterial vasodilation induced by PDE5 inhibition. *European Journal of Pharmacology* 2019; 863: 172675. doi: 10.1016/j.ejphar.2019.172675
17. King AL, Lefer DJ. Cytoprotective actions of hydrogen sulfide in ischaemia-reperfusion injury. *Experimental Physiology* 2011; 96: 840-846. doi: 10.1113/expphysiol.2011.059725
18. Gray KJ, Engelmann UH, Johnson EH, Fishman IJ. Evaluation of misoprostol cytoprotection of the bladder with cyclophosphamide (cytoxan) therapy. *Journal of Urology* 1986; 136 (2): 496-500. doi: 10.1016/s0022-5347(17)44929-9
19. Wang HJ, Lee WC, Tyagi P, Huang CC, Chuang YC. Effects of low energy shock wave therapy on inflammatory molecules, bladder pain, and bladder function in a rat cystitis model. *Neurourology and Urodynamics* 2017; 36 (6): 1440-1447. doi: 10.1002/nau.23141
20. Sun L, Chen L, Wang F, Zheng X, Yuan C et al. Exogenous hydrogen sulfide prevents lipopolysaccharide-induced inflammation by blocking the TLR4/NF-κB pathway in MAC-T cells. Exogenous hydrogen sulfide prevents lipopolysaccharide-induced inflammation by blocking the TLR4/NF-κB pathway in MAC-T cells. *Gene* 2019; 20; 710: 114-121. doi: 10.1016/j.gene.2019.05.033
21. Ozatik FY, Teksen Y, Kadioglu E, Ozatik O, Bayat Z. Effects of hydrogen sulfide on acetaminophen-induced acute renal toxicity in rats. *International Urology and Nephrology* 2019; 51 (4): 745-754. doi: 10.1007/s11255-018-2053-0
22. De Oliveira MG, Calmasini FB, Alexandre EC, De Nucci G, Mónica FZ et al. Activation of soluble guanylyl cyclase by BAY 58-2667 improves bladder function in cyclophosphamide-induced cystitis in mice. Activation of soluble guanylyl cyclase by BAY 58-2667 improves bladder function in cyclophosphamide-induced cystitis in mice. *American Journal of Physiology and Renal Physiology* 2016; 1; 311 (1): F85-93. doi: 10.1152/ajprenal.00041.2016
23. Oger S, Behr-Roussel D, Gorny D, Lebret T, Validire P et al. Signalling pathways involved in sildenafil-induced relaxation of human bladder dome smooth muscle. *British Journal Pharmacology* 2010; 160 (5): 1135-1143. doi: 10.1111/j.1476-5381.2010.00748.x
24. Kolluru GK, Shen X, Kevil KG. A tale of two gases: NO and H₂S, foes or friends for life. *Redox Biology* 2013; 1 (1): 313-318. doi: 10.1016/j.redox.2013.05.001
25. Wang J, Wang W, Li S, Han Y, Zhang P et al. Hydrogen sulfide as a potential target in preventing spermatogenic failure and testicular dysfunction. Hydrogen sulfide as a potential target in preventing spermatogenic failure and testicular dysfunction. *Antioxidants & Redox Signaling* 2018; 28 (16): 1447-1462. doi: 10.1089/ars.2016.6968
26. Di Villa Bianca RD, Cirino G, Sorrentino R. Hydrogen sulfide and urogenital tract. *Handbook and Experimental Pharmacology* 2015; 230: 111-136. doi: 10.1007/978-3-319-18144-85
27. Di Villa Bianca RD, Mitidieri E, Fusco F, Russo A, Pagliara V et al. Urothelium muscarinic activation phosphorylates CBS(Ser227) via cGMP/PKG pathway causing human bladder relaxation through H₂S production. *Scientific Reports* 2016; 11; 6: 31491. doi: 10.1038/srep31491
28. Zhang Y, Shen N, Qi L, Chen W, Dong Z et al. Efficacy of Schizandra chinensis polysaccharide on cyclophosphamide induced dyszoospermia of rats and its effects on reproductive hormones. *Zhongguo Zhong Xi Yi Jie He Za Zhi* 2013; 33 (3): 361-364. PMID: 23713251
29. Barut EN, Engin S, Barut B, Kaya C, Kerimoglu G et al. Uroprotective effect of ambroxol in cyclophosphamide-induced cystitis in mice. *International Urology and Nephrology* 2019; 51 (5): 803-810. doi: 10.1007/s11255-019-02128-y