

1-1-2021

Single nucleotide polymorphisms of GDF9 gene/exon 2 region and their associations with milk yield and milk content traits in Karakaş and Norduz sheep breeds

HASAN KOYUN

SELAHADDİN KİRAZ


SERHAT KARACA

SEYRANİ KONCAGÜL

AYHAN YILMAZ

See next page for additional authors

Follow this and additional works at: <https://journals.tubitak.gov.tr/veterinary>

 Part of the [Animal Sciences Commons](#), and the [Veterinary Medicine Commons](#)

Recommended Citation

KOYUN, HASAN; KİRAZ, SELAHADDİN; KARACA, SERHAT; KONCAGÜL, SEYRANİ; YILMAZ, AYHAN; KARAKUŞ, KADİR; YEŞİLOVA, ABDULLAH; and AYGÜN, TURGUT (2021) "Single nucleotide polymorphisms of GDF9 gene/exon 2 region and their associations with milk yield and milk content traits in Karakaş and Norduz sheep breeds," *Turkish Journal of Veterinary & Animal Sciences*: Vol. 45: No. 5, Article 11.

<https://doi.org/10.3906/vet-2010-26>

Available at: <https://journals.tubitak.gov.tr/veterinary/vol45/iss5/11>

This Article is brought to you for free and open access by TÜBİTAK Academic Journals. It has been accepted for inclusion in Turkish Journal of Veterinary & Animal Sciences by an authorized editor of TÜBİTAK Academic Journals. For more information, please contact academic.publications@tubitak.gov.tr.

Single nucleotide polymorphisms of GDF9 gene/exon 2 region and their associations with milk yield and milk content traits in Karakaş and Norduz sheep breeds

Authors

HASAN KOYUN, SELAHADDİN KİRAZ, SERHAT KARACA, SEYRANİ KONCAGÜL, AYHAN YILMAZ, KADİR KARAKUŞ, ABDULLAH YEŞİLOVA, and TURGUT AYGÜN

Single nucleotide polymorphisms of GDF9 gene/exon 2 region and their associations with milk yield and milk content traits in Karakaş and Norduz sheep breeds

Hasan KOYUN^{1*}, Selahaddin KIRAZ², Serhat KARACA¹, Seyrani KONCAGÜL³,
Ayhan YILMAZ⁴, Kadir KARAKUŞ⁵, Abdullah YEŞİLOVA¹, Turgut AYGÜN¹

¹Department of Animal Sciences, Faculty of Agriculture, Van Yüzüncü Yıl University, Van, Turkey

²Department of Animal Sciences, Faculty of Agriculture, Harran University, Şanlıurfa, Turkey

³Department of Animal Sciences, Faculty of Agriculture, Ankara University, Ankara, Turkey

⁴Department of Animal Sciences, Faculty of Agriculture, Siirt University, Siirt, Turkey

⁵Department of Animal Sciences, Agricultural Faculty of Agriculture, Malatya Turgut Özal University, Malatya, Turkey

Received: 07.10.2020 • Accepted/Published Online: 06.07.2021 • Final Version: 26.10.2021

Abstract: Karakaş and Norduz sheep have been adapted to the Lake Van region of Turkey for many years as being domestic genetic resources and meat, milk, and fleece traits are a reliable economic resource especially preferred by small family businesses around the area. In this study, the data set consisted of milk yield (MY) and milk content components; milk fat (MF), fat-free dry matter (FFDM), dry matter (DM), protein (Pro), lactose (Lac), pH, acidity H (aH), and lactic acid (Lac). Besides, Karakaş (n = 30) and Norduz (n = 26) sheep were chosen to investigate based on the SNP method. Correspondingly, genomic DNA from both breeds exon 2 of the GDF9 gene region was amplified, 815 base pairs (bp) in length, by means of PCR. Therefore, there were three novel SNPs detected in both breeds under investigation. Although SNP1 and 2 with genotypes of GG and AG had statistically significant impacts on both milk production and milk components (p < 0.01), SNP3 with genotypes of TT, TC had no significant effects on the milk characteristics in question.

Key words: GDF9 gene/exon 2 region, genetic resources, Karakaş and Norduz sheep, milk production and components, SNP

1. Introduction

The domestication and breeding of small ruminants are virtually as old as human history. As in many countries of the world, sheep farming activities are attractive for producers due to ease of management, care, efficient utilization of undersized grasslands, resistance to disease and harsh climatic conditions. Sheep (*Ovis aries*) is the most cultivated farm animal in different parts of the world, after goat, among livestock. There are approximately 1314 sheep breeds around the world [1]. Sheep are multipurpose animals that are raised for their meat, milk, fleece, skin, fur and fertilizer. Turkey is one of the world's most important sheep farming countries in the globe and there are about 37.28 million heads in almanac of 2019.¹ Essentially, Turkish sheep breeds are divided into two categories: thin- and fat-tailed breeds. The most common Turkish sheep breeds are fat-tailed breeds such as Akkaraman, Morkaraman, İvesi, Karakaş and Norduz [2].

The region of Lake Van basin with high altitude conditions is home to many native animal species such

as Karakaş and Norduz sheep that are thought to be well adapted domestic gene sources around the region for many years. Besides, these sheep breeds are a reliable economic resource preferred by small family businesses in and around the region for sheep farming. Norduz and Karakaş sheep are categorized as a multipurpose, fat-tailed sheep and produced for milk, meat and fleece in the region [3–5].

Various molecular techniques and gene markers are used in genomic levels for molecular identification (phylogenetic) and genetic variation (polymorphism) analysis and studies. Over the past decades, different forms of genetic markers have been used in gene mapping attempts of plants, animals, and humans with polymerase chain reaction (PCR) techniques. These are briefly; restriction fragment length polymorphism (RFLP), random amplified polymorphic DNA (RAPD), amplified fragment length polymorphism (AFLP), single-strand length polymorphism (SSLP), minisatellites and microsatellites, and single nucleotide polymorphisms

¹ www.tarimorman.gov.tr

* Correspondence: hkoyun@yyu.edu.tr

(SNP). All of these marker technologies can be applied to the marker-assisted selection (MAS) in animal breeding programs [6–7]².

Recently, worldwide studies in the molecular genetics area have shown that economically important traits in farm animals have been specified by means of the SNPs technique in genes for detecting functional or qualified genetic variations throughout the genomes. Milk yield and milk content traits are economically important traits in sheep, also known as complex traits, are controlled by a large number of unlinked genes with small impacts [8]. Growth differentiation factors (GDFs) are a subfamily of proteins associated with the transforming growth factor beta superfamily that has certain roles in development and female reproductive traits during early folliculogenesis [9,10]. Furthermore, the GDF9 gene, a candidate gene for high prolificacy in farm animals, conducting several key granulosa cell enzymes involved in cumulus expansion in female reproduction [11].

In addition, of the GDFs, the GDF9 is an oocyte-derived component, fundamental for folliculogenesis, oogenesis, and ovulation playing a crucial role in the fertility of female [12]. The gene encoding for the GDF9 is mapped on ovine chromosome 5 (OAR5) [13,14] and spans about 2.5 kbp included 2 exons. The two exon regions are interrupted by an intron with 1126 bp and coding a propeptide of 453 amino acids, with the mature peptide consisting of 135 amino acids [15]. Moreover, single nucleotide polymorphisms (SNPs) on sheep GDF9 have been revealed to influence fecundity traits such as ovulation rate and litter size in sheep. As a result, the GDF9 gene could serve as a genetic marker for the improvement of reproductive performance in sheep [16].

Due to the fact that no research had been performed on the GDF9 gene and milk content properties together, it was aimed to investigate the exon 2 region of the GDF9 gene, assuming that it would make some contributions to the genetic literature. Thus, the objective of this research was to identify polymorphisms for the growth differentiation factor 9 (GDF9) gene/exon 2 region by sequencing and evaluate statistical associations between SNP-genotypes with milk yield and milk content traits of Karakaş and Norduz sheep.

2. Materials and methods

2.1. Animal selection, milk yield records and measurements

The animal material of this research was chosen randomly from Norduz and Karakaş sheep flocks in animal breeding research farm of the Faculty of Agriculture at Van Yüzüncü

Yıl University (Van-YYU) as Karakaş (n = 30) and Norduz (n = 26). The data set used in this study was composed of milk yield (MY) and milk content traits; milk fat (MF), fat-free dry matter (FFDM), dry matter (DM), protein (Pro), lactose (Lac), pH, acidity H (aH), and lactic acid (LA). The milk controls were started 30 days after the first lambing occurred in the flocks. In every milk control, 50 mL of milk sample was taken from each ewe and kept at +4 °C for the milk component analyses.

2.2. Milk components analysis

Milk components analyses were performed at the milk laboratory of Food Engineering Department of Van-YYU using different methods such that: milk fat based on Gerber method, dry matter based on gravimetric method, protein based on Kjeldahl method, fat-free dry matter based on calculation method and lactic acid based on titration method [17, 18].

2.3. Molecular genetics analysis

The analyses were carried out in the Animal Biotechnology Laboratory of the Faculty of Agriculture at Harran University. Sheep genomic DNA was isolated from 3–5 mL peripheral sheep blood samples using the DNA isolation kit (Gene JET Whole Blood Genomic DNA Purification Mini Kit # K0781, Thermo Fisher Scientific, Waltham, MA, USA). Genomic region sequence information of *Ovis aries* breed (Texel chromosome 5; gi | 417531957: c41843517 - 41840787) from the GenBank³ was primarily utilized for the design primers. Forward and reverse primers (5'- GAGCCAGAGTTTTCTAGCAAG -3' and 5'- ATCGGTGATTCACATGGACAGC - 3') were designed with Primer3Input (version 0.4.0) package software to include the exon 2 region based on the GDF9 gene sequence information that was 815 bp in length (Figure 1).

PCR reactions were prepared in 0.2 mL tubes on ice in the specified proportions and then the PCR conditions were placed on the PCR device (Boeco, UK). And the reactions were adjusted in a volume of 40 µL for each sample as follows; 4.0 µL 10 × PCR buffer, 3.5 µL MgCl₂ (25 mM), 1.0 µL dNTP mix (10 mM), 1 µL primer F (10 pmol), 1 µL primer R (10 pmol), 0.4 µL Taq polymerase (5 U), 1.5 µL template DNA and 27.6 µL nuclease-free ddH₂O. The thermal cycle was programmed as follows; 4 min initial denaturation at 95 °C followed by 30 cycles consisting of 45 s denaturation at 94 °C, 60 s primer binding at 57 °C, 1.5 min elongation at 72 °C, and 5 min for final elongation at 72 °C. A 100-bp ladder (Fermentas) was used as a marker to run the PCR yields. The DNA samples were then sequenced to perform the GDF 9 gene region of PCR amplification (İontek Gen Company, İstanbul, Turkey). The samples for gene sequencing were prepared as 40µL (20µL PCR product + 20µL ddH₂O).

² Hayes B. Statistical genomics. Lecture notes. University of Palermo, Palermo, Italy, 2006.

³ <http://www.ncbi.nlm.nih.gov>

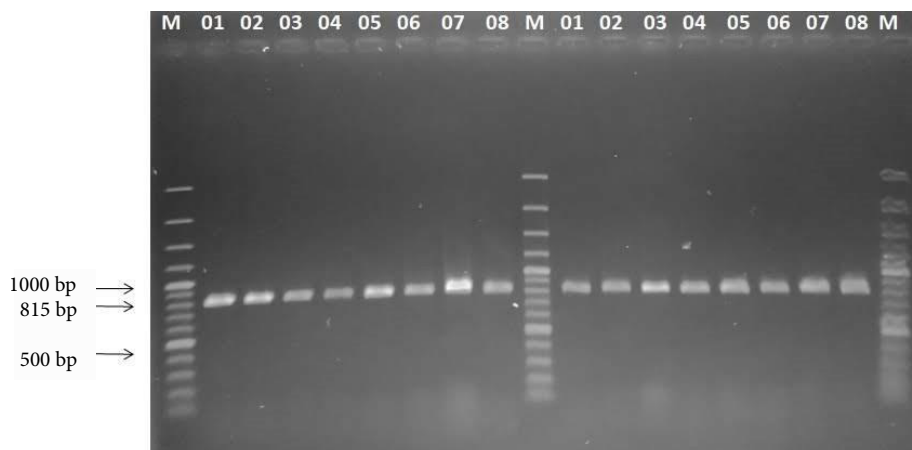


Figure 1. Gel photo of PCR yields (815 bp in length) of exon 2 region of GDF9 gene.

2.4. Sequence analysis

All yielded PCR products of the exon 2 region of the GDF9 gene were sent to İntek Gen Company for getting sequenced, and sequence analyses were performed using Chromas software (version 2.3).

2.5. Statistical analysis

The effects of environmental factors on milk yield and components were estimated by GLM procedure in SPSS 9.0 package program. The data were adjusted for body weight, age and birth type of ewes prior to final analyses and the final model included breeds, SNP genotypes and breed x SNP-genotype interactions as fixed effects. The final model was:

$$y_{ijk} = \mu + b_i + g_j + bg_{ij} + e_{ijk}$$

where y_{ijk} is the adjusted value of trait of interest, μ is the overall mean, b_i is the fixed effect of i th breed, g_j is the fixed effect of j th SNP-genotype, bg_{ij} is the fixed effect of interaction between breed and SNP, and e_{ijk} is the random error term. The analyses were carried out for each SNP separately and the Tukey test was used to compare the differences in group means.

2.6. Hardy-Weinberg equilibrium (HWE) analysis

In order to figure out allele and genotype frequencies and observed (H_o) and expected (H_e) heterozygosity, and HWE were calculated using an online software program⁴.

3. Results

The PCR products of 815 bp, the part of exon 2 region of the GDF9 gene were obtained from all samples in both breeds (Figure 1).

3.1. Sequence analysis

Three novel single nucleotide polymorphisms (SNPs) were observed in both breeds after genomic DNA sequence analyses. As for the heterologous of SNPs, SNP1 (A/G),

SNP2 (A/G) and SNP3 (T/C) were determined. Depending upon the sequence information of exon 2 of the GDF9 gene, all SNPs structurally displayed transition mutations.

3.2. Hardy-Weinberg equilibrium (HWE)

Allele and genotype frequencies and observed (H_o) and expected (H_e) heterozygosity values of these three novel SNPs are given in Table 1. While SNP1 and SNP2 (A/G) showed polymorphisms in both sheep breeds, SNP3 (T/C) displayed a polymorphism structure. In addition, neither the AA genotypes of SNP1 and 2 nor the CC genotype of SNP3 were observed in Karakaş and Norduz sheep. The highest (96%) of the G allele and the lowest (4%) values of the A allele in SNP1 were observed in Norduz sheep, while the highest (96%) of the G allele and the lowest (4%) of the A allele in SNP2 were found in Karakaş sheep. Similarly, Norduz sheep had the highest value (96%) of the T allele and the lowest (4%) values of the C allele in SNP3. Considering the genotype frequencies, the highest (92.3%) value of the GG genotype in SNP1 was observed in Norduz sheep, while the highest value of the GG genotype in SNP2 was found as 93.3% in Karakaş sheep. Furthermore, the TT genotypic value of SNP3 was found to be the highest (92.3%) in Norduz sheep. Eventually, Hardy-Weinberg equilibrium was detected even though two genotypes (AA and CC) of SNPs were absent in both flocks of breeds ($p < 0.05$, Table 1).

3.3. The effect of SNPs on milk yield and milk content traits

Least square means and corresponding standard errors of milk yield and milk content traits in terms of SNP-genotypes (SNP1 and SNP2) and breeds are given in Tables 2. The effect of SNP3 was found to be nonsignificant on any of the traits in this study, thus, no result for SNP3 was presented in this manuscript. On the other hand, it

⁴ www.oege.org/software/hwe-mr-calc.shtml

Table 1. Allele and genotype frequencies of SNPs observed (Ho) and expected (He) heterozygosity, and Hardy-Weinberg equilibrium test (χ^2 p-values) for the loci of exon 2 region of GDF9 gene.

SNP ID	Breed	Genotype	G, T allele frequency %	A, C allele frequency %	Observed frequency (Ho) %	Expected frequency (He) %	χ^2 -test p-value
SNP1	KAR	GG n = 25	0.92	0.08	83.3	84.7	0.619
		AG n = 5					
	NOR	GG n = 24	0.96	0.04	92.3	92.5	0.838
		AG n = 2					
SNP2	KAR	GG n = 28	0.96	0.04	93.3	93.4	0.8502
		AG n = 2					
	NOR	GG n = 23	0.94	0.06	88.5	88.8	0.7549
		AG n = 3					
SNP3	KAR	TT n = 27	0.95	0.05	90.0	90.3	0.7731
		TC n = 3					
	NOR	TT n = 24	0.96	0.04	92.3	92.5	0.838
		TC n = 2					

*: $p < 0.05$.

KAR: Karakaş sheep, NOR: Norduz sheep, χ^2 -test: chi-square test.

was determined that the effects of genotypes (GG, AG) of SNP1 and (GG, GA) of SNP2 were estimated statistically significant in all milk content traits except milk yield and milk fat ($p < 0.05$, $p < 0.01$).

4. Discussion

Based on QTL mapping studies in sheep genome, Maddox et al. [19] mapped the chromosomal location of the GDF9 region, inferring fecundity gene, of chromosome 5 (OAR5) using 81 informative microsatellite markers selected from the sheep linkage map. Although most of the current research studies for the GDF9 gene in the sheep genome have been usually emphasized reproduction and related traits, the research attempts on the GDF9 gene regarding the milk yield and milk content traits are rare.

Nicol et al. [20] conducted a research study to characterize a novel mutation in growth differentiation factor 9 (GDF9) in Icelandic Thoka sheep genome

using hormone assays of luteinizing hormone (LH) and follicle-stimulating hormone (FSH) along with immunohistochemistry methods. They concluded that a single base change (A1279C) resulting in a nonconservative amino acid change (S109R) in the C-terminus of the mature GDF9 protein was identified and this mutation was to be associated with increased fecundity in heterozygous ewes and infertility in homozygotes. In addition, Liandris et al. [21] carried out a research to detect SNPs and their effects of genotypes of the GDF9 and BMP15 genes on litter size in two Greek dairy sheep breeds using PCR-RFLP technique. Their results displayed that G1 and G8 mutations in the GDF9 gene were detected as statistically significant in the highly prolific breed of Chios. Similarly, Bahrami et al. [22] with using PCR-RFLP method, aimed to analyze mutations in exon 1 region of the GDF9 gene associated with twinning rate in Tajikistan sheep breed Hisari. The results of this study indicated that there were genetic polymorphisms

Table 2. Least square means and standart errors of milk content by breed and SNP1 and SNP2 genotypes.

Traits	Breeds	SNP1	Mean ± SEM	Source of V.			SNP2	Mean ± SEM	Source of V.		
				B	G	BG			B	G	BG
MY (mL)	KAR	GG	615.2 ± 55.95	NS	NS	NS	GG	603.2 ± 52.85	NS	NS	NS
		AG	592.0 ± 125.12				GA	725.0 ± 197.78			
	NOR	GG	681.3 ± 57.11				GG	646.8 ± 59.63			
		AG	480.0 ± 197.83				GA	770.0 ± 139.85			
MF (%)	KAR	GG	5.2 ± 0.22	NS	NS	NS	GG	5.2 ± 0.21	NS	NS	NS
		AG	5.4 ± 0.50				GA	4.5±0.78			
	NOR	GG	5.1 ± 0.23				GG	5.0 ± 0.23			
		AG	4.5 ± 0.79				GA	4.9±0.55			
FFDM (%)	KAR	GG	12.3±0.11 ^a	**	**	**	GG	12.2 ± 0.11 ^a	NS	NS	**
		AG	12.3 ± 0.24 ^a				GA	12.5 ± 0.41 ^a			
	NOR	GG	12.4 ± 0.11 ^a				GG	12.4 ± 0.12 ^a			
		AG	10.5 ± 0.38 ^b				GA	11.3 ± 0.29 ^b			
DM (%)	KAR	GG	17.5 ± 0.23 ^a	*	*	*	GG	17.5 ± 0.23	NS	NS	NS
		AG	17.6 ± 0.52 ^a				GA	17.1 ± 0.87			
	NOR	GG	17.5 ± 0.24 ^a				GG	17.5 ± 0.26			
		AG	15.0 ± 0.83 ^b				GA	16.3 ± 0.61			
Pro (%)	KAR	GG	6.7 ± 0.09 ^a	**	**	**	GG	6.6 ± 0.09 ^a	NS	NS	**
		AG	6.7 ± 0.20 ^a				GA	6.8 ± 0.34 ^a			
	NOR	GG	6.8 ± 0.09 ^a				GG	6.8 ± 0.10 ^a			
		AG	5.2 ± 0.32 ^b				GA	5.9 ± 0.24 ^b			
Lac (%)	KAR	GG	4.5 ± 0.01 ^a	**	**	**	GG	4.5 ± 0.01 ^a	NS	NS	**
		AG	4.5 ± 0.02 ^a				GA	4.6 ± 0.03 ^a			
	NOR	GG	4.6 ± 0.01 ^a				GG	4.6 ± 0.01 ^a			
		AG	4.4 ± 0.03 ^b				GA	4.5 ± 0.02 ^b			
pH	KAR	GG	6.5 ± 0.03 ^a	**	*	**	GG	6.5 ± 0.03 ^b	NS	**	NS
		AG	6.5 ± 0.07 ^a				GA	6.7 ± 0.11 ^a			
	NOR	GG	6.5 ± 0.03 ^a				GG	6.5 ± 0.03 ^b			
		AG	6.9 ± 0.11 ^b				GA	6.8 ± 0.08 ^a			
aH	KAR	GG	6.0 ± 0.06 ^a	**	**	**	GG	6.0 ± 0.06 ^a	NS	**	NS
		AG	6.1 ± 0.15 ^a				GA	5.7 ± 0.25 ^b			
	NOR	GG	6.0 ± 0.07 ^a				GG	6.0 ± 0.07 ^a			
		AG	4.9 ± 0.23 ^b				GA	5.3 ± 0.17 ^b			
La (%)	KAR	GG	0.3 ± 0.01 ^a	**	**	**	GG	0.3 ± 0.01 ^a	NS	**	NS
		AG	0.3 ± 0.01 ^a				GA	0.3 ± 0.01 ^a			
	NOR	GG	0.3 ± 0.01 ^a				GG	0.3 ± 0.01 ^a			
		AG	0.2 ± 0.01 ^b				GA	0.2 ± 0.01 ^b			

*: p < 0.05 **: p < 0.01 NS: no significance.

^{a,b}: Means with different superscript within trait are significantly different.

MY: milk yield, MF: milk fat, FFDM: fat-free dry matter, DM: dry matter, Pro: protein, Lac: lactose, pH: pH, aH: acidity H, La: lactic acid, B: breed, G: SNP-genotypy, BG: interaction between breed and SNP, KAR: Karakaş sheep, NOR: Norduz sheep, SEM: standard error of mean.

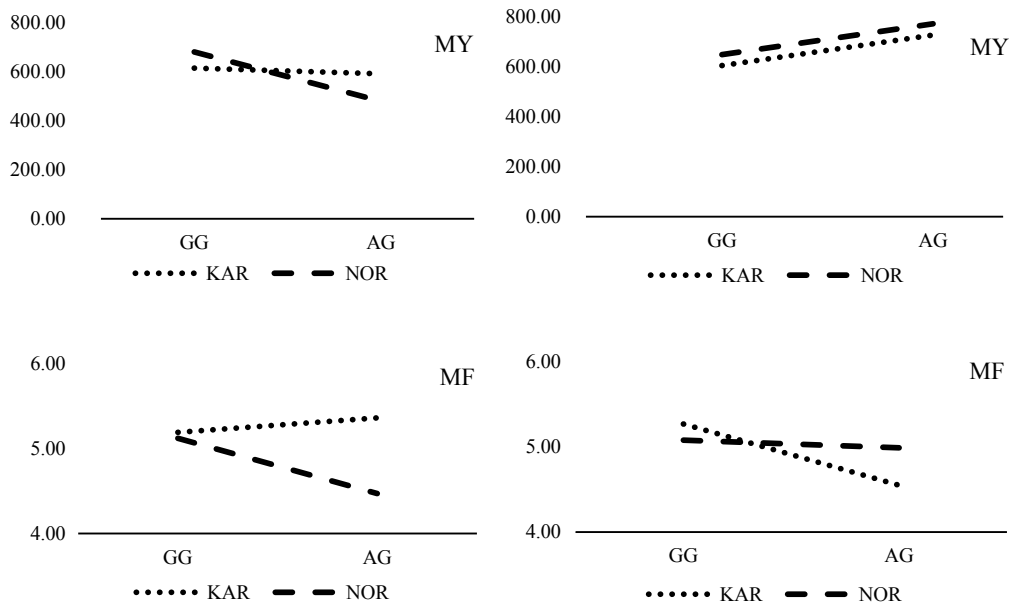


Figure 2. Milk yield (MY) and milk contents by breeds (KAR: Karakas sheep and NOR: Norduz sheep) and SNP genotypes (SNP1 genotype is on the left column and SNP2 genotypes is on the right column).

and mutations in the gene loci GDF9. Moreover, Khodabakhshzadeh et al. [23] investigated polymorphisms using PCR-SSCP technique and found 3 mutations (SNP) (443, 477 and 721 positions) in the region of exon 2 of the GDF9 gene in the Kermani sheep. Furthermore, El Ficky et al. [25] studied to investigate polymorphisms in the exon 1 region of the GDF9 gene concerning lambing rate and litter size in Egyptian sheep based on PCR-RFLP method. This research brought a conclusion that sequence analysis and diversity of polymorphisms in the GDF9 gene (exon 1) had a novel base substitution (A-T) for detection of Fec^G mutations serving as a molecular marker for twinning.

In regard to growth traits in sheep, Jawasreh and Ismail [26] performed a research to determine the correlations among prolactin gene (PRG), GDF-9, and calpastatin (CAG) genes polymorphism with growth traits in Awassi lambs. Their results showed that there were no associations between any of the preweaning growth traits and GDF9. With respect to the milk yield and milk content traits, Al- Khuzai and Ahmad [27] conducted a study to determine the genotypes for GDF9 gene/exon-1 and the associations between these genotypes with some productive and reproductive traits of Awassi sheep with PCR-RFLP method. Their results revealed that there were no significant differences between genotypes of exon 1 of the GDF9 in total milk production and lactation period. It was implied that the formed proteins from gene expression of GDF9 influenced on milk production and lactation period, and they might also affect on other traits in animals. Throughout their research, it was also concluded that there were significant differences between genotypes

in percentage of fat and solid nonfat in milk composition due to the effect of genotype of exon 1 of the GDF9 gene.

Based on the sequence information of exon 2 of the GDF9 gene, we have identified in this research study three novel single nucleotide polymorphisms (SNP1, 2, and 3, respectively): g. 146A > G, g. 419A > G and g. 464T > C. All SNPs structurally displayed transition mutations that SNP1 and 2 were with purine to purine (A ↔ G) substitutions whereas SNP3 was with pyrimidine to pyrimidine (T ↔ C) changes as point mutations. In addition, the GG genotypes of SNP1 and 2 and the CC genotype of SNP3 could not be observed in both sheep breeds. The possible reasons might be that these genotypes could have either a fatal effect in animals or absences in both sheep flocks depending upon other random environmental conditions such as diseases, sales of animals, etc. In order to reach more precise scientific evidence on this issue, genotypes that are observed less or not at all in the populations should be investigated by increasing the number of animal size.

As for the statistical analyses performed using a generalized linear model (GLM) in this study, SNP1 and 2 revealed some statistically extreme significant evidence among milk component traits. The effect of SNP1 and its interaction with the breed (BXG) had no significant effects on milk yield (MY) and milk fat (MF) but had a highly significant effect ($p < 0.01$) on the other traits in the analyses. In addition, it was determined that the genotypes of GG and AG of SNP1 in Karakas sheep and the only GG genotype of SNP1 in Norduz sheep had increasing effects whereas SNP1 (AG) in Norduz sheep had decreasing effects on the levels of milk content: FFDM, Pro, Lac, pH, aH and

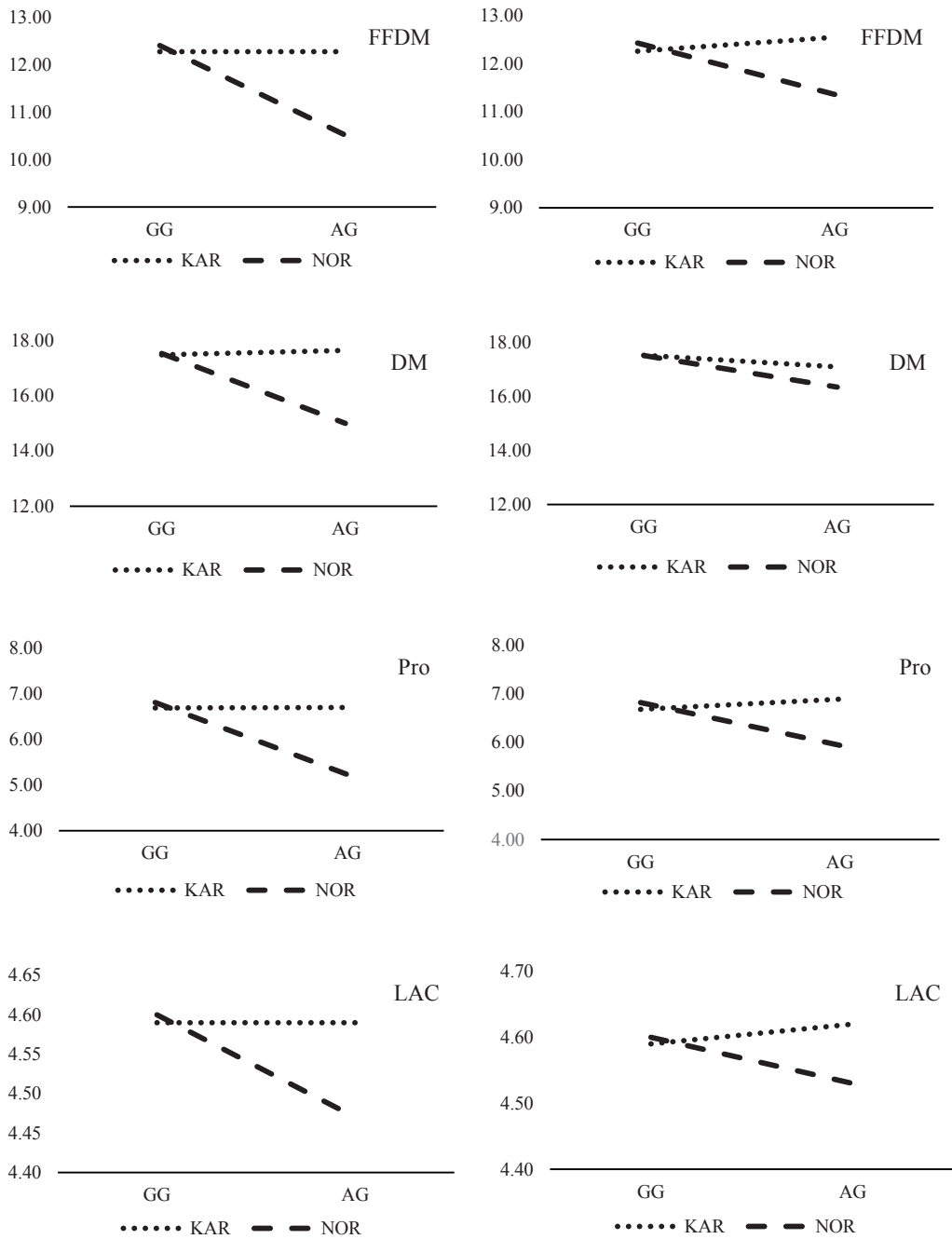


Figure 2. (Continued).

LA. Also, the effect of breed-SNP1 (BXG) interaction on the milk components were estimated as highly significant ($p < 0.01$, Table 2, Figure 2).

On the other hand, taking SNP2 into account, it was observed that SNP2 had statistically significant effects on pH, acidity H (aH) and lactic acid (LA) levels that were influenced with SNP2 genotypes of GG and GA. When compared the GA and GG genotypes of SNP2 in Norduz sheep, the GA genotype increased pH level, but slightly

decreased acidity H (aH) and lactic acid (La) levels. In addition, it was found that interaction of breed-SNP2 (BXG) had only significant effects on fat-free dry matter (FFDM), protein (Pro) and lactose (Lac) ($p < 0.01$, Table 2, Figure 2).

Considerably, SNP1 and 2 had neither increasing nor decreasing effects on the milk yield and milk component traits in Karakaş sheep. Nonetheless, it was figured out that the AG genotype of SNP1 and 2 had statistically significant impacts on reducing milk components in Norduz sheep.

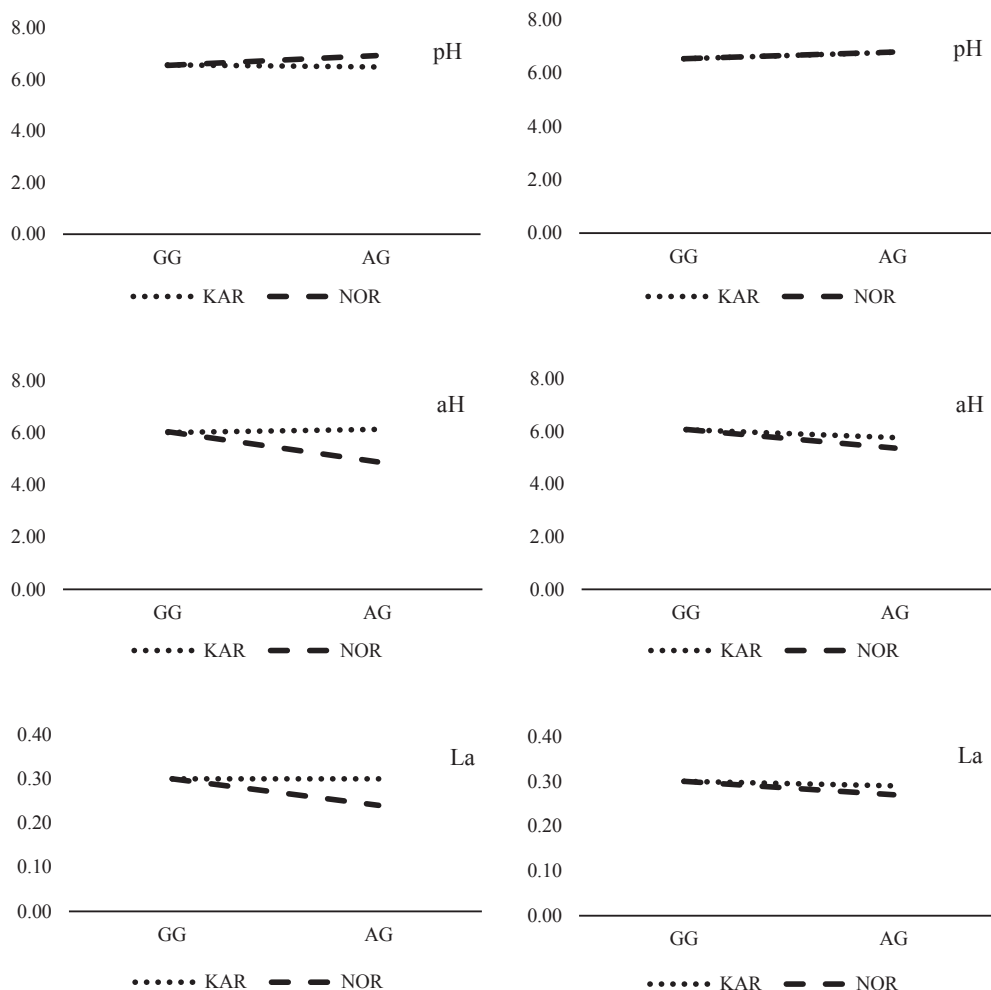


Figure 2. (Continued).

Unlike SNP1 and 2, SNP3 with TT and TC genotypes had no statistically significant evidence for both milk yield and milk component traits.

5. Conclusion

In this study, three novel SNPs have been identified in the exon 2 region that is 815 bp in length of the GDF9 gene. Results indicated that SNP1 and 2 had potential effects on both milk production and milk components while SNP3 had no effects. Karakaş and Norduz sheep carrying the desired SNP1 and SNP2 genotypes should be evaluated for reference flocks. Similar research studies that would be applied to different sheep breeds in and around the Lake

Van basin may lead to marker-assisted selection (MAS) or genomic selection attempts in a near future.

Acknowledgments

We would like to express our sincere thanks and appreciations to Dr. Elvan Ocak and Dr. Şenol Köse of the Food Engineering Department of Van Yüzüncü Yıl University, who performed milk content analyses for this research study. In addition, special thanks to Mr. Gürcan Koyun for his great technical support on this assay. This research was also financially supported by the Scientific Research Center (BAP) of Van Yüzüncü Yıl University with the project number of 2008-ZF-B064.

References

- Galal H. Biodiversity in goats. *Small Ruminant Research* 2005; 60 (1): 75-81. doi: 10.1016/j.smallrumres.2005.06.021
- Yılmaz O, Wilson RT, Kor A, Cengiz F, Ertuğrul M. The farm animal genetic resources of Turkey: sheep – I – common and rare breeds. *Bitlis Eren University Journal of Science and Technology* 2012; 2 (1): 1-5. doi: 10.17678/beuscitech.47143

3. Aygün T, Bingöl M. Akkaraman varyetesi Karakaş ve Norduzların doğum ağırlıkları bakımından karşılaştırılması. In: Ege Üniversitesi Ziraat Fakültesi Uluslararası Hayvancılık Kongresi; İzmir, Tutkey; 1999. pp. 738-742 (in Turkish).
4. Aygün T, Bingöl M, Gökdal Ö. Comparison of feedlot performance and carcass traits of tail docked Karakas and Norduz male lambs. *Indian Veterinary Journal* 2006; 83: 869-872.
5. Bingöl M. Norduz koyunlarının döl ve süt verimi ile büyüme-gelişme ve dış yapı özellikleri. PhD, Van Yüzüncü Yıl University, Van, Turkey, 1998 (in Turkish).
6. Heaton MP, Harhay GP, Bennett GL, Stone RT, Grosse WM et al. Selection and use of SNP markers for animal identification and paternity analysis in U.S. beef cattle. *Mammalian Genome* 2002; 13 (5): 272-281. doi: 10.1007/s00335-001-2146-3
7. Weber JL, May PE. Abundant class of human DNA polymorphism which can be typed using the polymerase chain reaction. *American Journal of Human Genetics* 1989; 44 (3): 388-396.
8. Dekkers JCM. Application of genomics tools to animal breeding. *Current Genomics* 2012; 13 (3): 207-212. doi: 10.2174/138920212800543057
9. Araby IEE, Awad A, Saleh AA, Magdy SM. Polymorphisms of growth differentiation factor 9 (GDF 9) and bone morphogenetic protein 15 (BMP15) genes in Barki and Rahmani sheep breeds. *Zazazig Veterinary Journal* 2019; 47 (2): 160-167. doi: 10.21608/ZVJZ.2019.10071.1025
10. Herpin A, Lelong C, Favrel P. Transforming growth factor-beta-related proteins: an ancestral and widespread superfamily of cytokines in metazoans. *Developmental and Comparative Immunology* 2004; 28 (5): 461-485. doi: 10.1016/j.dci.2003.09.007
11. Wang X, Yang Q, Wang K, Zhang S, Pan C et al. A novel 12-bp indel polymorphism within the GDF9 gene is significantly associated with litter size and growth traits in goats. *Animal Genetics* 2017; 48 (6): 720-736. doi: 10.1111/age.12617
12. De Castro F, Cruz MH, Leal CL (2016). Role of growth differentiation factor 9 and bone morphogenetic protein 15 in ovarian function and their importance in mammalian female fertility. *Asian-Australasian Journal of Animal Sciences* 2016; 29 (8): 1065-1074. doi: 10.5713/ajas.15.0797
13. Hanrahan J, Gregan SM, Mulsant P, Mullen M, Davis GH et al. Mutations in the genes for oocyte-derived growth factors GDF9 and BMP15 are associated with both increased ovulation rate and sterility in Cambridge and Belclare sheep (Ovisaries). *Biology of Reproduction* 2004; 70 (4): 900-909. doi: 10.1095/biolreprod.103.023093
14. Sadighi M, Bodensteiner KJ, Beattie AE, Galloway SM. Genetic mapping of ovine growth differentiation factor 9 (GDF9) to sheep chromosome 5. *Anim Genetics* 2002; 33 (3): 244-245. doi: 10.1046/j.1365-2052.2002.t01-11-00876.x
15. Ghaderi A, Nasiri MTB, Mirzadeh KH, Fayazi J, Sadr AS. Identification of the GDF9 mutation in two sheep breeds by using polymerase chain reaction- restriction fragment length polymorphism (PCR-RFLP) technique. *African Journal of Biotechnology* 2010; 47: 8020-8022. doi: 10.5897/AJB10.532
16. Dolatabady MM, Habibizad J. Single nucleotide polymorphisms (SNPs) of GDF9 gene in Bahmaei and Lak Ghashghaei sheep breeds and its association with litter size. *Iranian Journal of Applied Animal Sciences* 2019; 9: 427-432.
17. Kurt A, Çakmakçı S, Çağlar A. Süt ve mamülleri muayene ve analiz metodları rehberi. Atatürk Üniversitesi Yayınları No: 252/D. Erzurum, Turkey: Atatürk Üniversitesi Yayınları; 1996. p. 238 (in Turkish).
18. Ocak E, Bingöl M, Gökdal O. Van yöresinde yetiştirilen Norduz koyunlarının süt bileşimi ve süt verim özellikleri. *YYÜ Tarım Bilimleri Dergisi* 2009; 19 (2): 85-89 (in Turkish).
19. Maddox JF, Davies KP, Crawford AM, Hulme DJ, Vaiman D et al. An enhanced linkage map of the sheep genome comprising more than 1000 loci. *Genome Research* 2001; 11: 1275-1289. doi: 10.1101/gr.135001
20. Nicol L, Bishop SC, Pong-Wong R, Bendixen C, Holm LA et al. Homozygosity for a single base-pair mutation in the oocytespecific GDF9 gene results in sterility in Thoka sheep. *Reproduction* 2009; 138 (6): 921-933. doi: 10.1530/REP-09-0193
21. Liandris E, Kominakis A, Andreadou M, Kapeoldassi K, Chadioa S et al. Associations between single nucleotide polymorphisms of GDF9 and BMP15 genes and litter size in two dairy sheep breeds of Greece. *Small Ruminant Research* 2012; 107 (1): 16-21. doi: 10.1016/j.smallrumres.2012.04.004
22. Bahrami Y, Bahrami S, Mohammadi HR, Chekani-Azar V, Mousavizadeh SA. The polymorphism of GDF-9 gene in Hisari sheep. *Biological Forum – An International Journal* 2014; 6 (2): 46-52.
23. Khodabakhshzadeh R, Mohammadabadi MR, Esmailzadeh AK, Shahrehabak HM, Bordbar F. Identification of point mutations in exon 2 of GDF9 gene in Kermani sheep. *Polish Journal of Veterinary Sciences* 2016; 19 (2): 281-289. doi: 10.1515/pjvs-2016-0035
24. El Fiky ZA, Hassan GM, Mohamed I, Nassar MI (2017). Genetic polymorphism of growth differentiation factor 9 (GDF9) gene related to fecundity in two Egyptian sheep breeds. *Journal of Assisted Reproduction and Genetics* 2017; 34: 1683-1690. doi: 10.1007/s10815-017-1007-2
25. Jawasreh KI, Ismail ZB. Polymorphism of prolactin, growth differentiation factor 9, and calpastatin genes and their effects on weight traits in Awassi lambs. *Journal of Advanced Veterinary and Animal Research* 2019; 6 (1): 86-91. doi: 10.5455/javar.2019. f317
26. Al-Khuzai FLJ, Ahmed JR. Polymorphism of gdf9 (exon-1) gene and its association with milk production and prolificacy of Awassi sheep. *Plant Archives* 2019; 19 (2): 4037-4040.